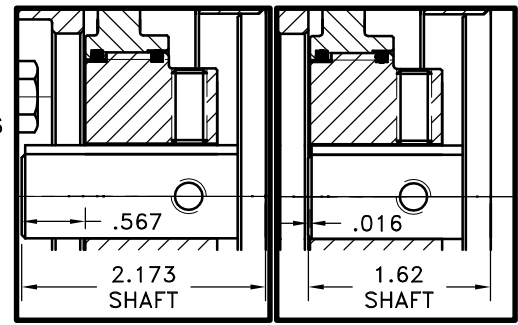
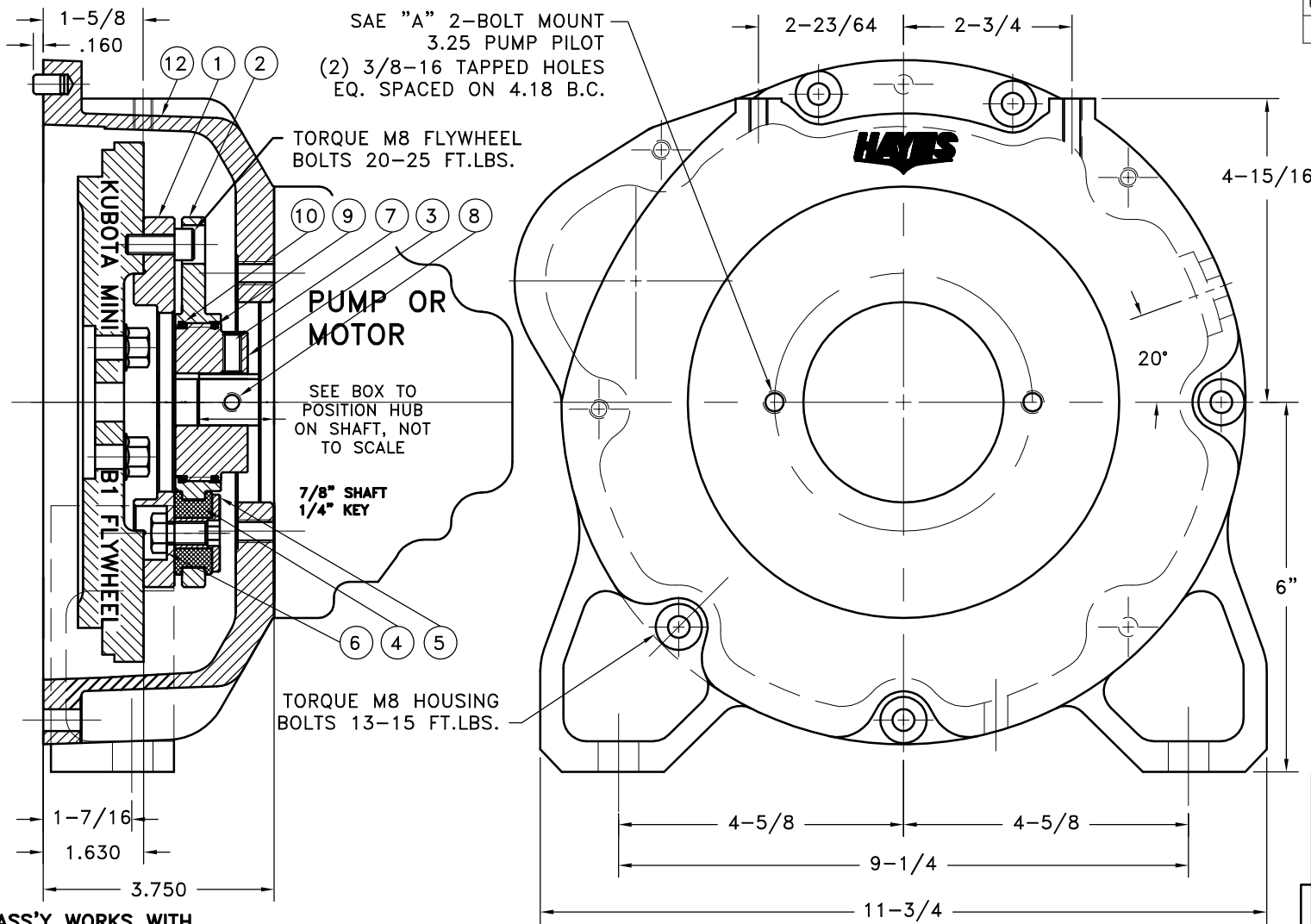


REV	DATE	CHANGE DESCRIPTION	MOD.BY	CK1	CK2



NOTE: REMOVE HUB FROM ASS'Y, PRESET HUB ON SHAFT & RE-ASSEMBLE USING NUT & BOLT GRADE LOC-TITE ON SET SCREWS. IF SHAFT LENGTH OTHER THAN SHOWN IS USED USE THIS FORMULA TO GET PRESET: 1.606-SHAFT LENGTH=PRESET

ASS'Y WORKS WITH FLYWHEELS: C-1(16851-25118) & C-2(16861-25112) STARTER PLATE: E-2(19666-04621)

NOTES:

- 1. HOUSING FOR KUBOTA ENGINES Z442-B, Z482-B, D662-B, D722-B, WG600-B, WG750-B**
- 2. USE FURNISHED TEXACO 1912 COUPLING GREASE ON BOTH MALE AND FEMALE SPLINE.**

COUPLING ASS'Y #127375

14	930112	BOLT KIT	1
13	PURCHASE	5/16 DIA x 1/2 DOWEL PIN	2
12	930114-01	HOUSING	1
11	801912	GREASE	1
10	568-143	O-RING (124283)	1
9	568-142	O-RING (124284-41)	1
8	PURCHASE	5/16-18x5/8 SSSCP	1
7	PURCHASE	5/16-18x1/2" SSSCP	1
6	HX100	5/16-24x5/8 HHB	5
5	123729-01	THREADED BUSHING	5
4	H52500	NEOPRENE INSERT	5
3	124284-41	EXTERNAL SPLINED ADAPTER	1
2	124283	INTERNAL SPLINED HUB	1
1	124280	FLYWHEEL PLATE	1

THIS DRAWING IS THE PROPERTY OF HAYES MFG. INC. AND IS LOANED SUBJECT TO THE CONDITION THAT IT SHALL NOT BE REPRODUCED, COPIED, LOANED OR OTHERWISE DISPOSED OF, DIRECTLY OR INDIRECTLY. IT SHALL BE USED AS A MEANS OF REFERENCE TO WORK FURNISHED BY THIS COMPANY ONLY AND IS NOT TO BE SUBMITTED TO OUTSIDE PARTIES FOR EXAMINATION WITHOUT OUR CONSENT.

SYMBOLS	DET.	PART NUMBER	DESCRIPTION	QTY.
▨ FLATNESS — STRAIGHTNESS ∠ ANGULARITY ⊥ SQUARENESS UNLESS OTHERWISE SPECIFIED ∥ PARALLELISM ⊙ CONCENTRICITY ⊕ TRUE POSITION ○ ROUNDNESS ⊖ CIRCULAR RUN OUT ⊖ TOTAL RUN OUT ⊖ CYLINDRICITY ✓ FINISH	DO NOT SCALE DRAWING TOLERANCES UNLESS OTHERWISE SPECIFIED 12X MAXIMUM ANGLE ±1/2° FRACTION ±1/32 DECIMAL .00 ±.01 .000 ±.005 .0000 ±.0005			
- UNLESS OTHERWISE SPECIFIED - REMOVE FIRST THREAD ON ALL TAPPED HOLES BREAK ALL SHARP CORNERS .010 TO .020 STAMP OR MARK DRAWING NO.		DRAWN BY CHECKED BY	DATE SCALE	DRAWING NO. 980115 SHEET OF REV.