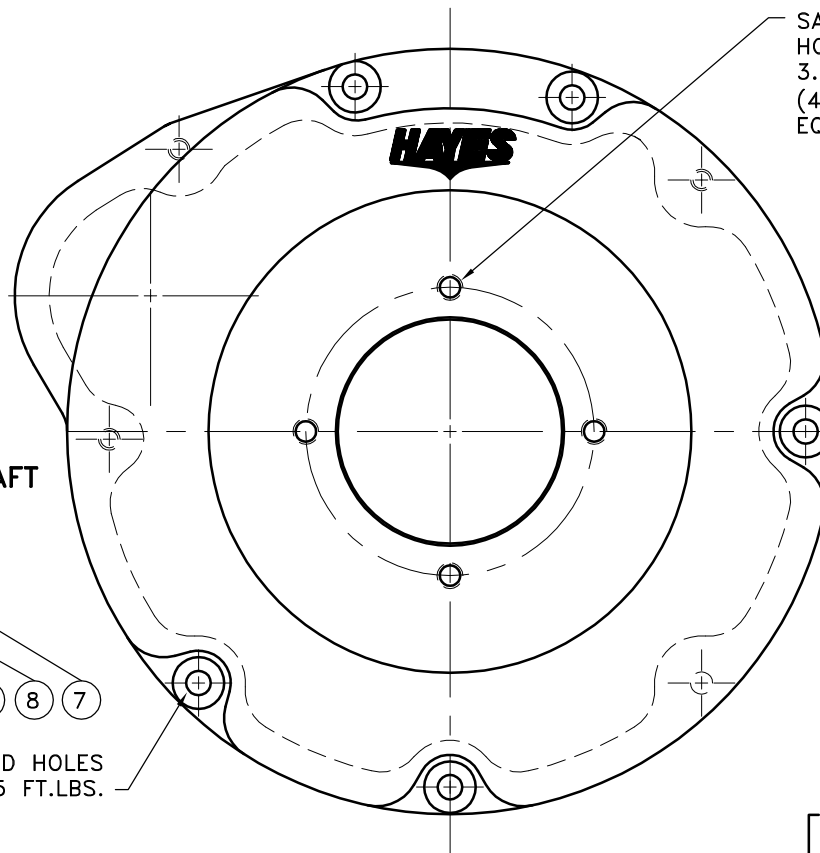
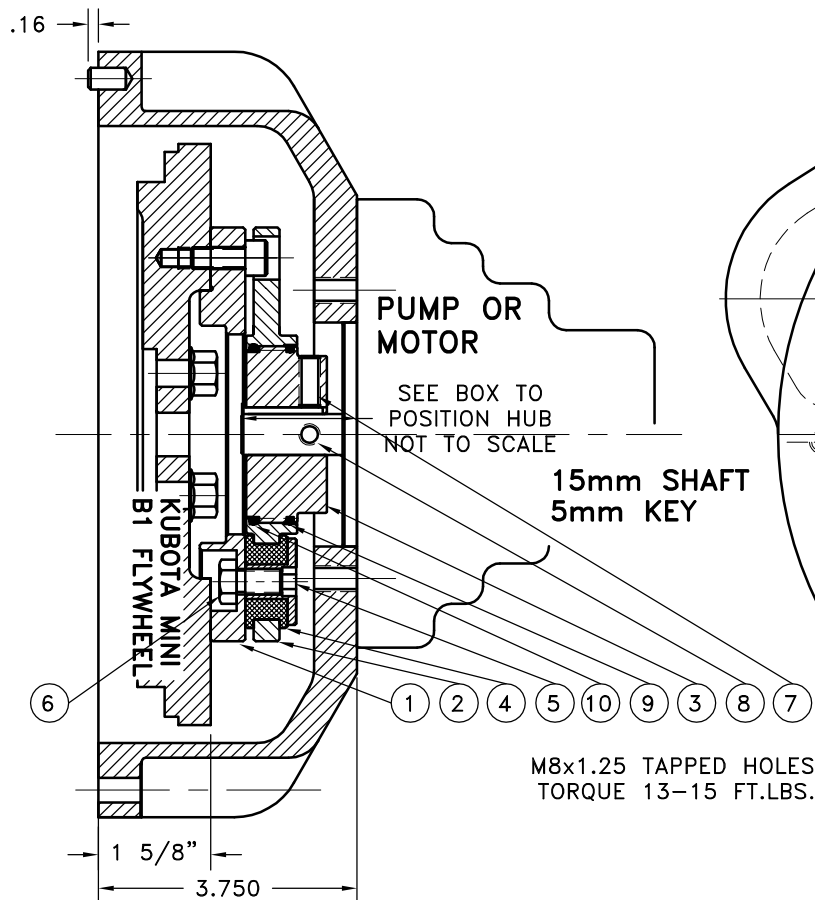


REV	DATE	CHANGE DESCRIPTION	MOD. BY	CK1	CK2



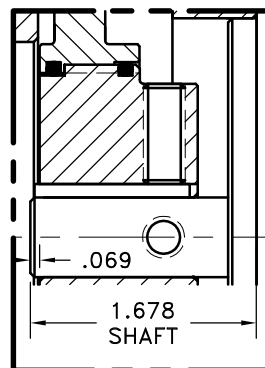
NOTES:

1. HOUSING FOR KUBOTA ENGINES
Z442-B, Z482-B, D662-B,
D722-B, WG600-B, WG750-B
2. USE FURNISHED TEXACO 1912
COUPLING GREASE ON BOTH
MALE AND FEMALE SPLINE.

ASS'Y WORKS WITH
FLYWHEELS: C-1(16851-25118)
& C-2(16861-25112)
STARTER PLATE: E-2(19666-04621)

14	930112	BOLT KIT	1
13	PURCHASE	5/16 DIA x 1/2" DOWEL PIN	2
12	930100-09	HOUSING	1
11	801912	GREASE	1
10	568-143	O-RING(124283)	1
9	568-142	O-RING(124284-54)	1
8	PURCHASE	5/16-18x3/4 S.S.S.C.P.	1
7	PURCHASE	5/16-18x5/8 S.S.S.C.P.	1
6	HX100	5/16-24x5/8 HHB	5
5	123729-01	THREADED BUSHING	5
4	H52500	NEOPRENE INSERT	5
3	124284-54	ADAPTER HUB	1
2	124283	ADAPTER PLATE	1
1	124280	FLYWHEEL PLATE	1

COUPLING ASS'Y
#127386



NOTE: REMOVE HUB FROM ASS'Y,
PRESET HUB ON SHAFT & RE-
ASSEMBLE USING NUT & BOLT
GRADE LOC-TITE ON SET
SCREWS. IF YOUR SHAFT LENGTH
IS NOT SHOWN USE THIS
EQUALTION TO GET THE HUB
PRESET:
1.609-SHAFT LENGTH = PRESET

THIS DRAWING IS THE PROPERTY OF HAYES MFG. INC. AND IS LOANED
SUBJECT TO THE CONDITION THAT IT SHALL NOT BE REPRODUCED,
COPIED, LOANED OR OTHERWISE DISPOSED OF, DIRECTLY OR INDIRECTLY.
IT SHALL BE USED AS A MEANS OF REFERENCE TO WORK FURNISHED BY
THIS COMPANY ONLY AND IS NOT TO BE SUBMITTED TO OUTSIDE PARTIES
FOR EXAMINATION WITHOUT OUR CONSENT.

SYMBOLS	DET.	PART NUMBER	DESCRIPTION	QTY.
FLATNESS STRAIGHTNESS ANGULARITY SQUARENESS PARALLELISM CONCENTRICITY TRUE POSITION ROUNDNESS CIRCULAR RUN OUT TOTAL RUN OUT CYLINDRICITY FINISH	DO NOT SCALE DRAWING TOLERANCES UNLESS OTHERWISE SPECIFIED MAXIMUM ANGLE ±1/2° FRACTION ±1/32 DECIMAL .00 ±.01 .000 ±.005 .0000 ±.0005	UNLESS OTHERWISE SPECIFIED - REMOVE FIRST THREAD ON ALL TAPPED HOLES BREAK ALL SHARP CORNERS .010 TO .020 STAMP OR MARK DRAWING NO.	HAYES MANUFACTURING INC. ® TITLE KUBOTA MINI SERIES HOUSING & FLYWHEEL COUPLING ASS'Y MATERIAL	
	DRAWN BY SIETING	DATE 12-10-03	DRAWING NO. 980116	
	CHECKED BY RJH	SCALE	SHEET OF REV.	