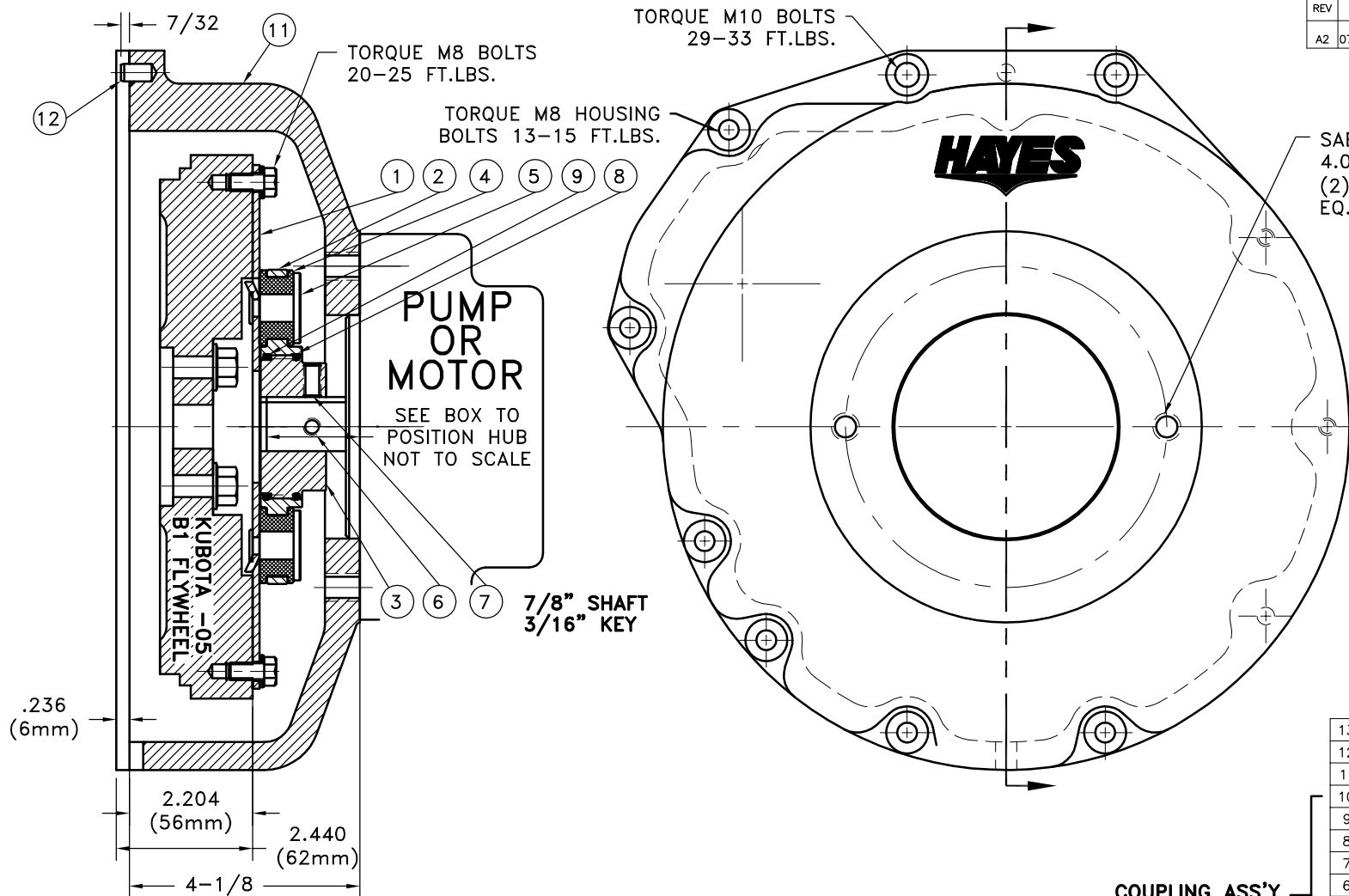


REV	DATE	CHANGE DESCRIPTION	MOD.BY	CK1	CK2
A2	07/18/2005	REMOVED TEXACO 1912 FROM NOTE	ZS	RJH	HM



SAE "B" 2-BOLT MOUNT  
4.00 DIA PUMP PILOT  
(2) 1/2-13 TAPPED HOLES  
EQ. SPACED ON 5.75 B.C.

#### NOTES:

1. HOUSING FOR KUBOTA ENGINES  
D-905, D1005-B, D1105-B,  
V1205-B, V1305-P, AND  
V1505-B

2. USE FURNISHED COUPLING  
GREASE ON BOTH MALE AND  
FEMALE SPLINE.

#### COUPLING ASS'Y #124286

13	952111	BOLT KIT	1
12	PURCHASE	5/16 DIA x 1/2" DOWEL	2
11	952055-02	HOUSING	1
10	801912	GREASE	1
9	568-143	O-RING (124282-02)	1
8	568-142	O-RING (124284-09)	1
7	PURCHASE	5/16-18x5/8 SSSCP	1
6	PURCHASE	5/16-18x3/4 SSSCP	1
5	123206-01	STEEL RIVET	6
4	H52500	NEOPRENE INSERT	6
3	124284-09	EXTERNAL SPLINED ADAPTER	1
2	124282-02	INTERNAL SPLINED HUB	1
1	124118-08	FLYWHEEL PLATE	1

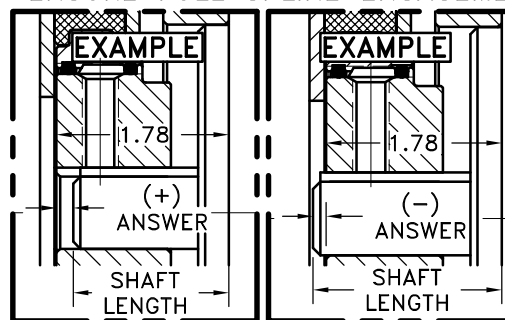
NOTE: REMOVE HUB FROM ASS'Y, PRESET HUB ON SHAFT & REASSEMBLE USING NUT & BOLT GRADE LOC-TITE ON SET SCREWS. SHAFT SHOULD HAVE A MINIMUM OF 3/4" OF ENGAGEMENT IF NOT CONTACT FACTORY FOR RECOMMENDATIONS. TO GET HUB PRESET USE THIS EQUATION:

EXAMPLE:  
1.78 - SHAFT LENGTH = HUB PRESET

IF YOUR ANSWER IS (+) SHAFT IS INSIDE OF HUB, IF YOUR ANSWER IS (-) SHAFT STICKS OUT OF HUB. (SEE BOXES)

THIS DRAWING IS THE PROPERTY OF HAYES MFG. INC. AND IS LOANED SUBJECT TO THE CONDITION THAT IT SHALL NOT BE REPRODUCED, COPIED, LOANED OR OTHERWISE DISPOSED OF, DIRECTLY OR INDIRECTLY. IT SHALL BE USED AS A MEANS OF REFERENCE TO WORK FURNISHED BY THIS COMPANY ONLY AND IS NOT TO BE SUBMITTED TO OUTSIDE PARTIES FOR EXAMINATION WITHOUT OUR CONSENT.

NOTE: THIS STEP IS IMPORTANT TO ENSURE FULL SPLINE ENGAGEMENT.



SYMBOLS	DET.	PART NUMBER	DESCRIPTION	QTY.
FLATNESS STRAIGHTNESS ANGULARITY SQUARENESS PARALLELISM CONCENTRICITY TRUE POSITION ROUNDNESS CIRCULAR RUN OUT TOTAL RUN OUT CYLINDRICITY FINISH	DO NOT SCALE DRAWING TOLERANCES UNLESS OTHERWISE SPECIFIED MAXIMUM ANGLE $\pm 1/2^\circ$ FRACTION $\pm 1/32$ DECIMAL .00 $\pm 0.01$ .000 $\pm 0.005$ .0000 $\pm 0.0005$		<b>HAYES</b> MANUFACTURING INC. ® TITLE KUBOTA -05 SERIES HOUSING & COUPLING ASS'Y MATERIAL	
- UNLESS OTHERWISE SPECIFIED - REMOVE FIRST THREAD ON ALL TAPPED HOLES BREAK ALL SHARP CORNERS .010 TO .020 STAMP OR MARK DRAWING NO.	DRAWN BY MAYCROFT CHECKED BY SCALE	DATE 2-2-95	DRAWING NO. 990101 SHEET OF REV.	