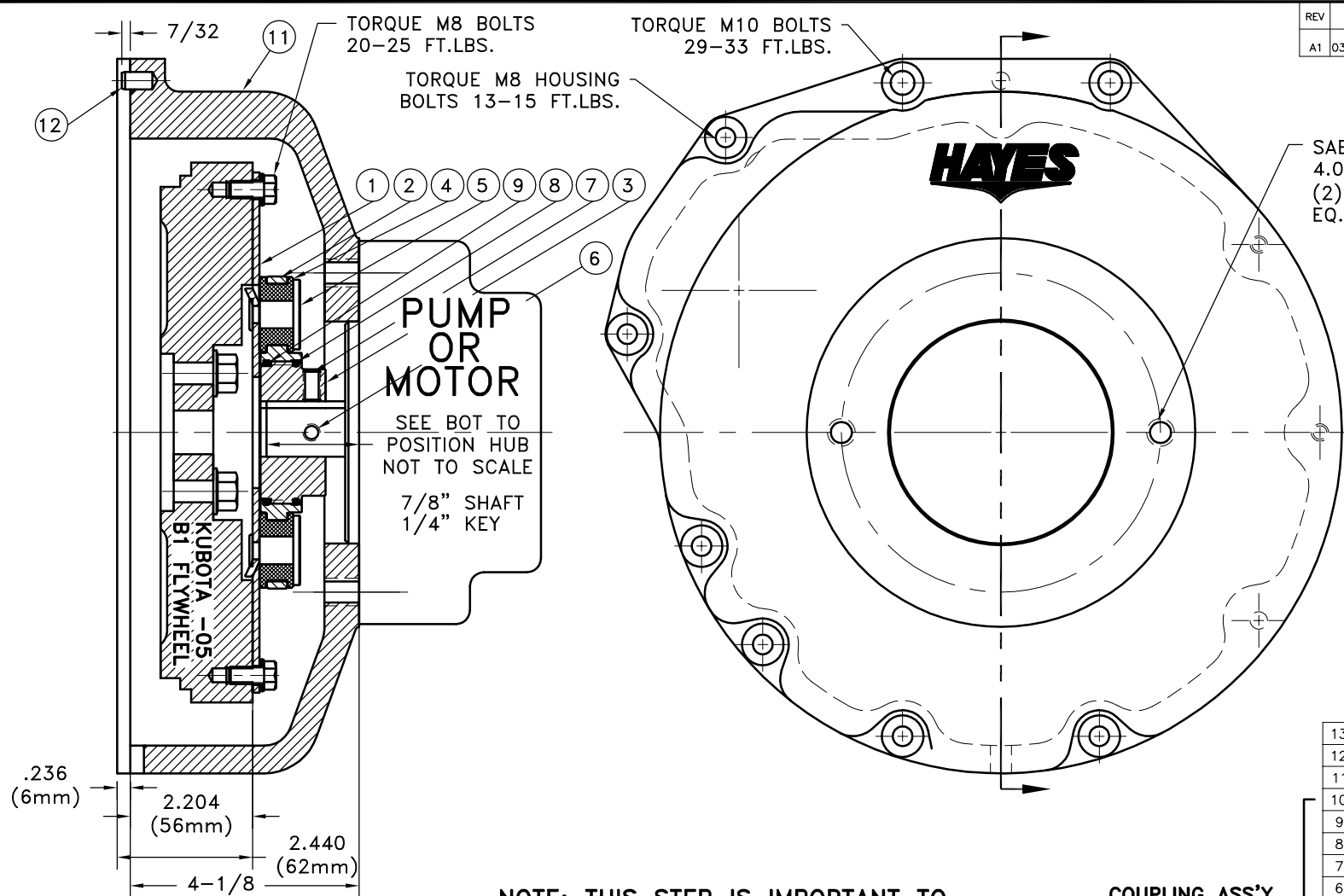


REV	DATE	CHANGE DESCRIPTION	MOD.BY	CK1	CK2
A1	03/25/2003	ADDED ATTN BOX.	ZS	RJH	HM



SAE "B" 2-BOLT MOUNT
 4.00 DIA PUMP PILOT
 (2) 1/2-13 TAPPED HOLES
 EQ. SPACED ON 5.75 B.C.

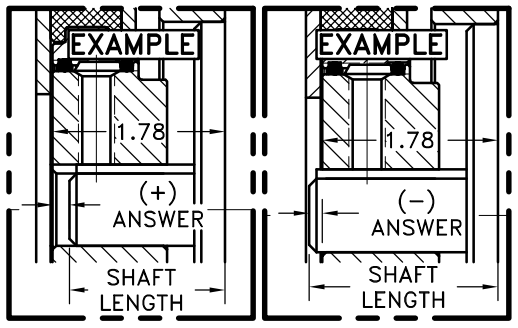
- NOTES:
- HOUSING FOR KUBOTA ENGINES D-905, D1005-B, D1105-B, V1205-B, V1305-P, AND V1505-B
 - USE FURNISHED COUPLING GREASE ON BOTH MALE AND FEMALE SPLINE.

NOTE: REMOVE HUB FROM ASS'Y, PRESET HUB ON SHAFT & REASSEMBLE USING NUT & BOLT GRADE LOC-TITE ON SET SCREWS. SHAFT SHOULD HAVE A MINIMUM OF 3/4" OF ENGAGEMENT IF NOT CONTACT FACTORY FOR RECOMMENDATIONS. TO GET HUB PRESET USE THIS EQUATION:

EXAMPLE:
 1.78 - SHAFT LENGTH = HUB PRESET

IF YOUR ANSWER IS (+) SHAFT IS INSIDE OF HUB, IF YOUR ANSWER IS (-) SHAFT STICKS OUT OF HUB. (SEE BOXES)

NOTE: THIS STEP IS IMPORTANT TO ENSURE FULL SPLINE ENGAGEMENT.



COUPLING ASS'Y #125254

13	952111	BOLT KIT	1
12	PURCHASE	5/16 DIA x 1/2" DOWEL	2
11	952055-02	HOUSING	1
10	801912	GREASE	1
9	568-143	O-RING (124282-02)	1
8	568-142	O-RING (124284-41)	1
7	PURCHASE	5/16-18x5/8 SSSCP	1
6	PURCHASE	5/16-18x3/4 SSSCP	1
5	123206-01	STEEL RIVET	6
4	H52500	NEOPRENE INSERT	6
3	124284-41	EXTERNAL SPLINED ADAPTER	1
2	124282-02	INTERNAL SPLINED HUB	1
1	124118-08	FLYWHEEL PLATE	1

SYMBOLS	DET.	PART NUMBER	DESCRIPTION	QTY.
▭ FLATNESS — STRAIGHTNESS ∠ ANGULARITY ⊥ SQUARENESS ∥ PARALLELISM ⊙ CONCENTRICITY ⊕ TRUE POSITION ○ ROUNDNESS ⊖ CIRCULAR RUN OUT ⊕ TOTAL RUN OUT ∅ CYLINDRICITY √ FINISH	DO NOT SCALE DRAWING TOLERANCES UNLESS OTHERWISE SPECIFIED 1/16" MAXIMUM ANGLE ±1/2° FRACTION ±1/32 DECIMAL .00 ±.01 .000 ±.005 .0000 ±.0005			
			TITLE KUBOTA -05 SERIES HOUSING & COUPLING ASS'Y MATERIAL	
			DRAWN BY MAYCROFT	DATE 9-8-99
			CHECKED BY SCALE	DRAWING NO. 990106 SHEET OF REV.
			BREAK ALL SHARP CORNERS .010 TO .020 STAMP OR MARK DRAWING NO.	

THIS DRAWING IS THE PROPERTY OF HAYES MFG. INC. AND IS LOANED SUBJECT TO THE CONDITION THAT IT SHALL NOT BE REPRODUCED, COPIED, LOANED OR OTHERWISE DISPOSED OF, DIRECTLY OR INDIRECTLY. IT SHALL BE USED AS A MEANS OF REFERENCE TO WORK FURNISHED BY THIS COMPANY ONLY AND IS NOT TO BE SUBMITTED TO OUTSIDE PARTIES FOR EXAMINATION WITHOUT OUR CONSENT.