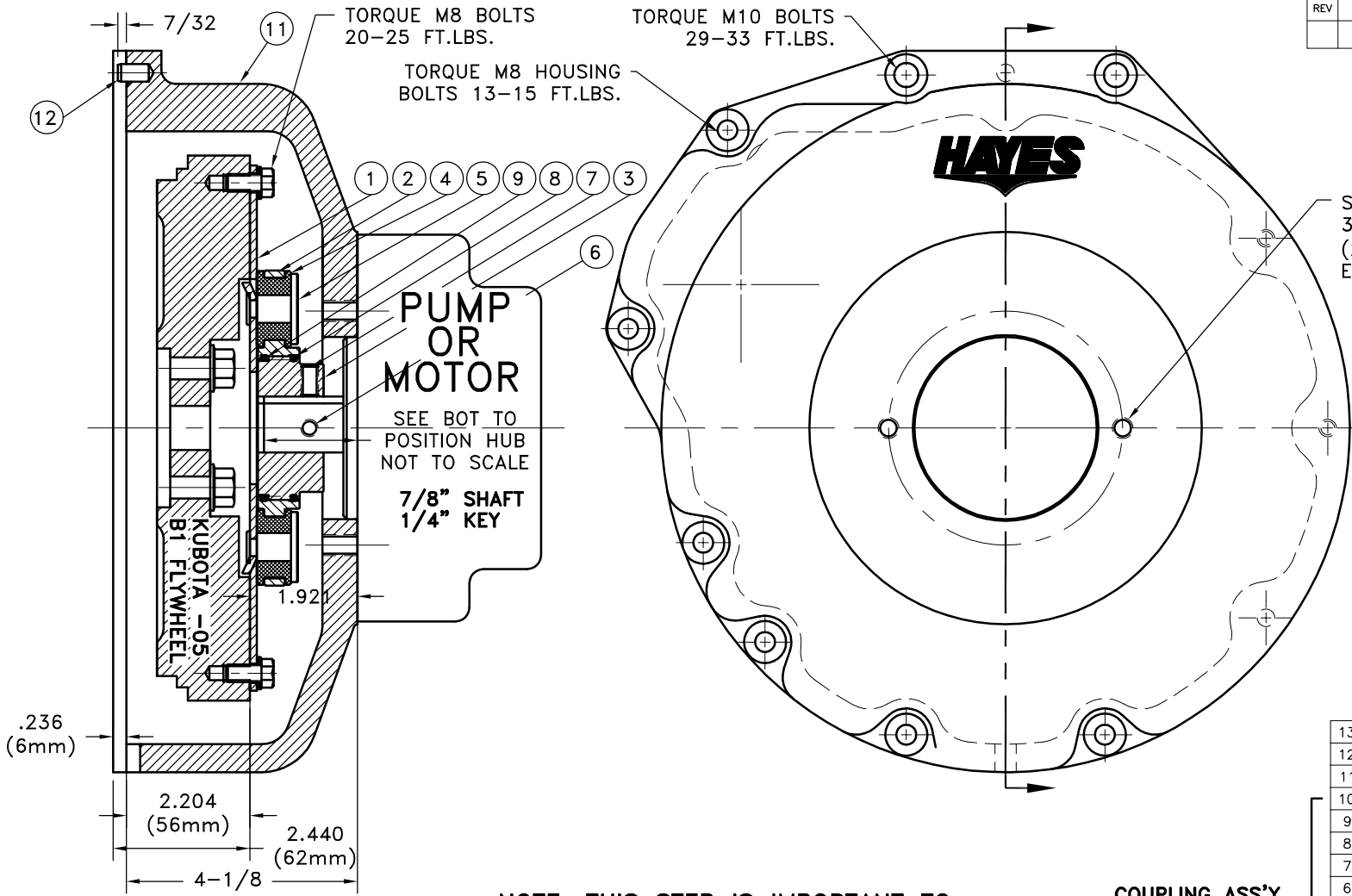


REV	DATE	CHANGE DESCRIPTION	MOD.BY	CK1	CK2



SAE "A" 2-BOLT MOUNT
3.25 PUMP PILOT
(2) 3/8-16 TAPPED HOLES
EQ. SPACED ON 4.18 B.C.

NOTES:

- HOUSING FOR KUBOTA ENGINES D-905, D1005-B, D1105-B, V1205-B, V1305-P, AND V1505-B
- USE FURNISHED TEXACO 1912 COUPLING GREASE ON BOTH MALE AND FEMALE SPLINE.

REV	DATE	CHANGE DESCRIPTION	MOD.BY	CK1	CK2
13	952111	BOLT KIT			1
12	PURCHASE	5/16 DIA x 1/2" DOWEL			2
11	952055-01	HOUSING			1
10	801912	GREASE			1
9	568-143	O-RING (124282-02)			1
8	568-142	O-RING (124284-41)			1
7	PURCHASE	5/16-18x5/8 SSSCP			1
6	PURCHASE	5/16-18x3/4 SSSCP			1
5	123206-01	STEEL RIVET			6
4	H52500	NEOPRENE INSERT			6
3	124284-41	EXTERNAL SPLINED ADAPTER			1
2	124282-02	INTERNAL SPLINED HUB			1
1	124118-08	FLYWHEEL PLATE			1

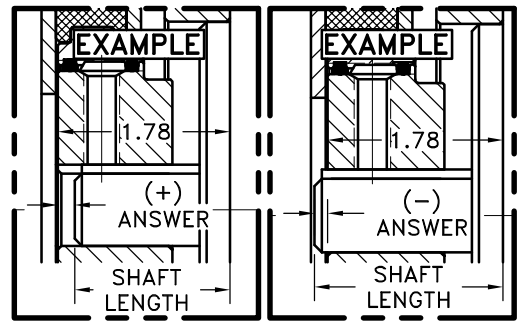
COUPLING ASS'Y #125254

NOTE: REMOVE HUB FROM ASS'Y, PRESET HUB ON SHAFT & REASSEMBLE USING NUT & BOLT GRADE LOC-TITE ON SET SCREWS. SHAFT SHOULD HAVE A MINIMUM OF 3/4" OF ENGAGEMENT IF NOT CONTACT FACTORY FOR RECOMMENDATIONS. TO GET HUB PRESET USE THIS EQUATION:

EXAMPLE:
1.78 - SHAFT LENGTH = HUB PRESET

IF YOUR ANSWER IS (+) SHAFT IS INSIDE OF HUB, IF YOUR ANSWER IS (-) SHAFT STICKS OUT OF HUB. (SEE BOXES)

NOTE: THIS STEP IS IMPORTANT TO ENSURE FULL SPLINE ENGAGEMENT.



SYMBOLS	DET.	PART NUMBER	DESCRIPTION	QTY.
▭ FLATNESS ▭ STRAIGHTNESS ▭ ANGULARITY ▭ SQUARENESS ▭ PARALLELISM ▭ CONCENTRICITY ⊕ TRUE POSITION ○ ROUNDNESS ⊙ CIRCULAR RUN OUT ⊙ TOTAL RUN OUT ⊙ CYLINDRICITY √ FINISH	DO NOT SCALE DRAWING TOLERANCES UNLESS OTHERWISE SPECIFIED 12/32 MAXIMUM ANGLE ±1/2° FRACTION ±1/32 DECIMAL .00 ±.01 .000 ±.005 .0000 ±.0005			
TITLE KUBOTA -05 SERIES HOUSING & COUPLING ASS'Y				
- UNLESS OTHERWISE SPECIFIED - REMOVE FIRST THREAD ON ALL TAPPED HOLES BREAK ALL SHARP CORNERS .010 TO .020 STAMP OR MARK DRAWING NO.		DRAWN BY SIETING	DATE 12-06-01	DRAWING NO. 990112
		CHECKED BY SCALE	SHEET OF	REV. OF