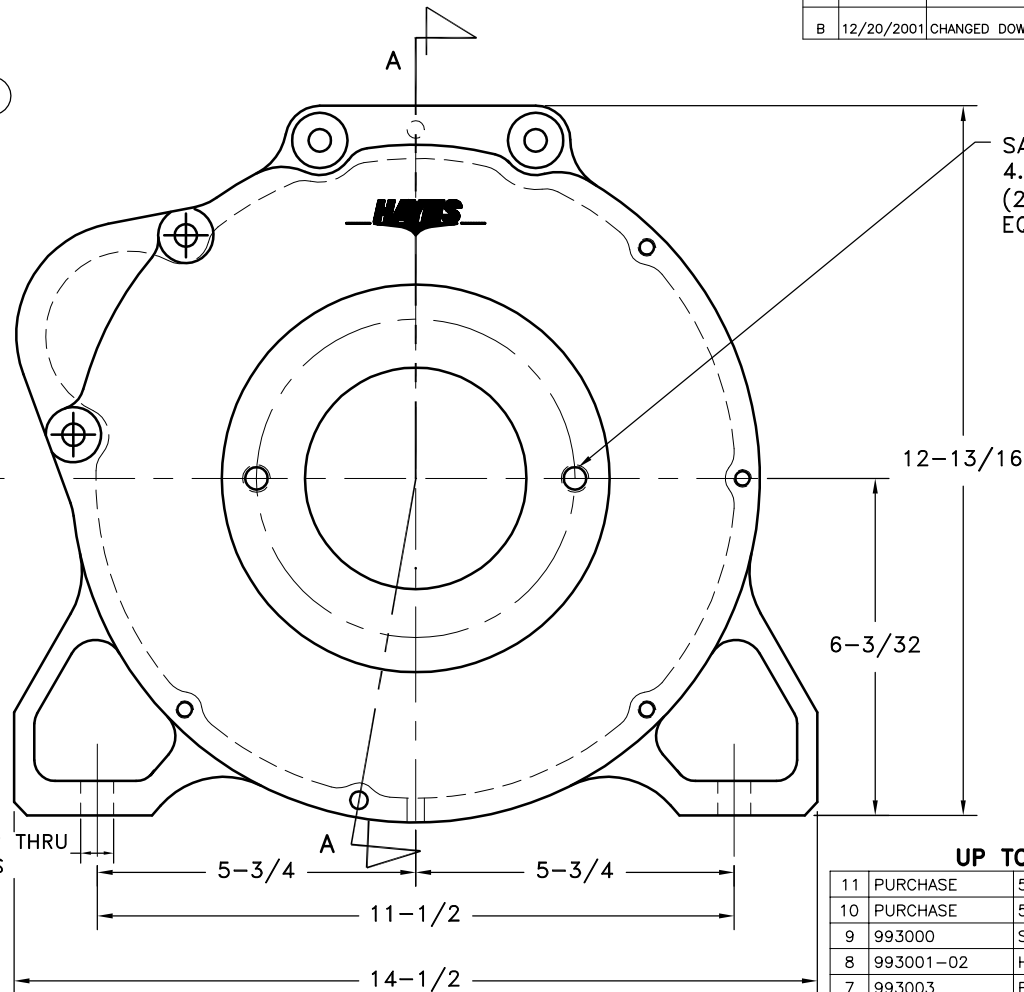
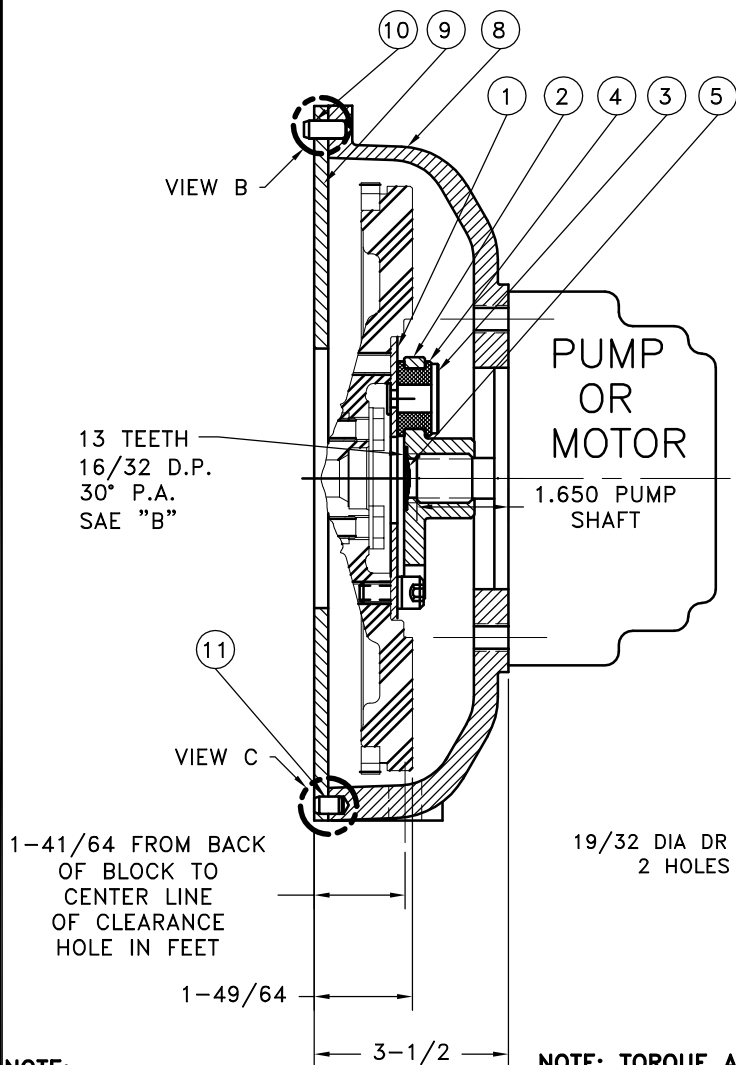


REV	DATE	CHANGE DESCRIPTION	MOD.BY	CK1	CK2
B	12/20/2001	CHANGED DOWEL/HOUSING ASS'Y	ZS	RJH	HM



#### UP TO 30 HP

11	PURCHASE	5/16" x 1/2" DOWEL PIN	1
10	PURCHASE	5/16" x 3/4" DOWEL PIN	1
9	993000	STARTER PLATE	1
8	993001-02	HOUSING	1
7	993003	BOLT KIT	1
6	801912	GREASE	1
5	HP-1125-S-32	HUBBARD PLUG	1
4	H52500	NEOPRENE INSERT	4
3	123206-01	STEEL RIVET	4
2	125520-02	COUPLING HUB	1
1	125523	FLYWHEEL PLATE	1

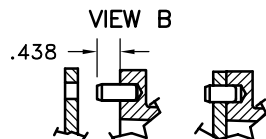
#### NOTE:

1. HOUSING WILL FIT MITSUBISHI ENGINES L2E & L3E
2. USE FURNISHED TEXACO 1912 COUPLING GREASE ON BOTH INTERNAL AND EXTERNAL SPLINES
3. CAUTION! WHEN INSTALLING PUMP ON ENGINE HOUSING BE CAREFUL BOLTS DO NOT EXTEND PAST INSIDE FACE OF HOUSING AND RUB ON COUPLING ASSEMBLY.

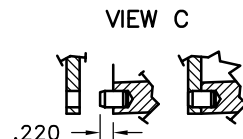
THIS DRAWING IS THE PROPERTY OF HAYES MFG. INC. AND IS LOANED SUBJECT TO THE CONDITION THAT IT SHALL NOT BE REPRODUCED, COPIED, LOANED OR OTHERWISE DISPOSED OF, DIRECTLY OR INDIRECTLY. IT SHALL BE USED AS A MEANS OF REFERENCE TO WORK FURNISHED BY THIS COMPANY ONLY AND IS NOT TO BE SUBMITTED TO OUTSIDE PARTIES FOR EXAMINATION WITHOUT OUR CONSENT.

NOTE: TORQUE ALL M10 BOLTS 29-33 FT.LBS  
TORQUE ALL M8 BOLTS 20-25 FT.LBS  
TORQUE ALL 5/16 BOLTS 25-30 FT.LBS

COUPLING ASS'Y #125522



PRESS FIT DOWEL IN HAYES HOUSING AT HAYES, AS SHOWN IN VIEW B



PRESS FIT DOWEL IN HAYES HOUSING AT HAYES, AS SHOWN IN VIEW C

SYMBOLS	DET.	PART NUMBER	DESCRIPTION	QTY.
FLATNESS STRAIGHTNESS ANGULARITY SQUARENESS PARALLELISM CONCENTRICITY TRUE POSITION ROUNDNESS CIRCULAR RUN OUT TOTAL RUN OUT CYLINDRICITY FINISH	DO NOT SCALE DRAWING TOLERANCES UNLESS OTHERWISE SPECIFIED 125 MAXIMUM ANGLE ±1/2° FRACTION ±1/32 DECIMAL .00 ±.01 .000 ±.005 .0000 ±.0005		<b>HAYES</b> MANUFACTURING INC. ® TITLE FLYWHEEL COUPLING ASS'Y MATERIAL	
- UNLESS OTHERWISE SPECIFIED - REMOVE FIRST THREAD ON ALL TAPPED HOLES BREAK ALL SHARP CORNERS .010 TO .020 STAMP OR MARK DRAWING NO.	DRAWN BY SIETING CHECKED BY SCALE	DATE 6-2-98	DRAWING NO. 993006 SHEET OF REV.	