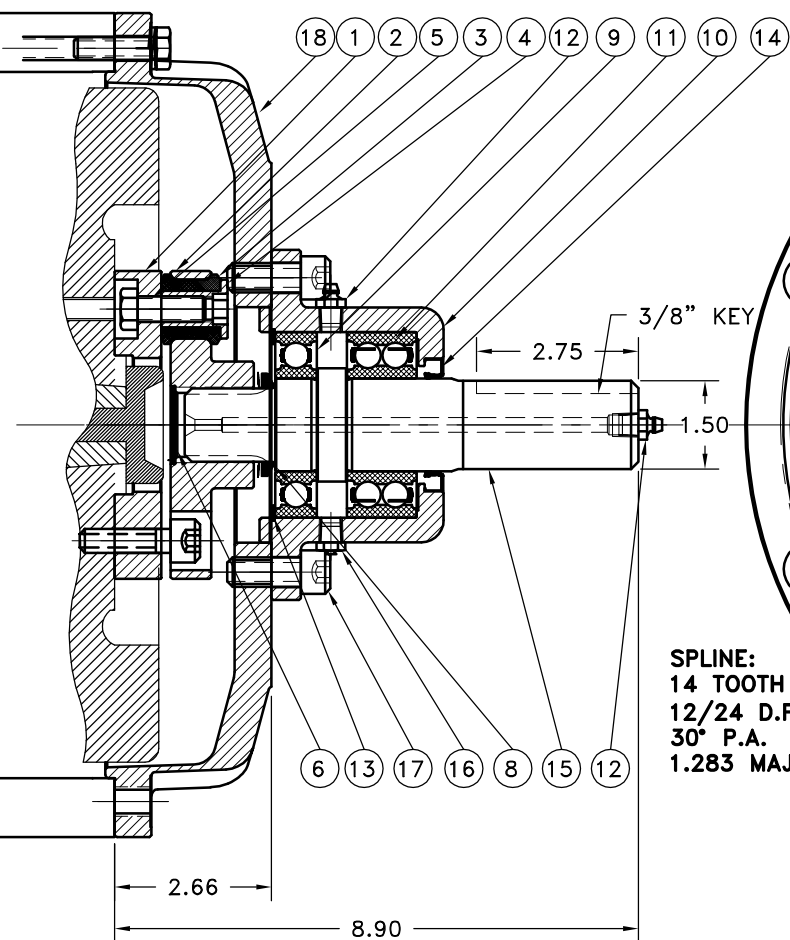
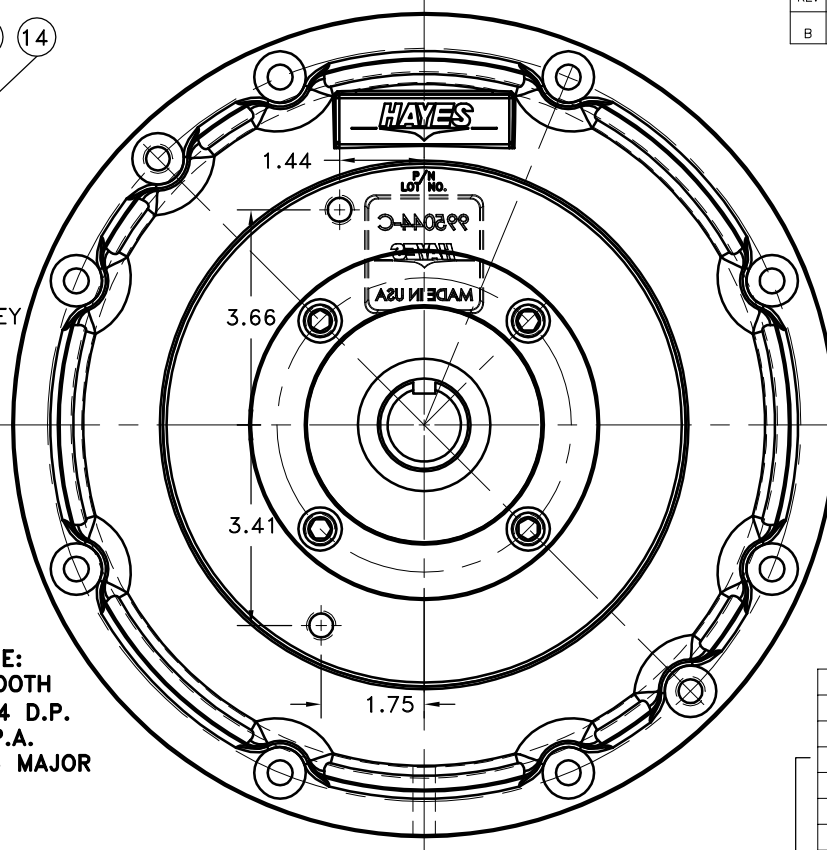


REV	DATE	CHANGE DESCRIPTION	MOD. BY	CK1	CK2
B	11/18/2013	CHANGED HOUSING TO #995054+	KNH	HM	JM



SPLINE:
14 TOOTH
12/24 D.P.
30° P.A.
1.283 MAJOR



**BEARING SUPPORTED
STUB SHAFT SUB-ASS'Y
#127636**

**COUPLING ASS'Y
127783**

**SEE SIMILAR ASSEMBLY
995046**

19	995045	BOLT KIT (PRE-ASSEMBLED)	1
18	995054	HOUSING	1
17	BOLT	1/2-13x1-1/8 SHCS	4
16	1093K11	RELIEF VALVE	1
15	127635	SPLINED SHAFT [14T 12/24]	1
14	15830	SEAL	1
13	RR-314	SPIROLOX SNAP RING	1
12	600000	GREASE ZERT	2
11	5208WD	DOUBLE BEARING	1
10	125007	BEARING HOUSING	1
9	208P	BEARING	1
8	VS-032	V-RING	1
7	801912	GREASE	1
6	R-0017-01	HUBBARD PLUG	1
5	BOLT	7/16-20x1-1/4 HHB Y D	4
4	123727	THREADED BUSHING	4
3	H62500	NEOPRENE INSERT	4
2	127781	COUP HUB [14T12/24\3.937]	1
1	127782	FLYWHEEL PLATE [SPEC.\3.937]	1

NOTES:

1. LIGHTLY GREASE INTERNAL AND EXTERNAL AREA OF SPLINE AT ASSEMBLY USING SUPPLIED COUPLING GREASE (OVER GREASING COULD CAUSE A HYDRAULIC TYPE LIFT ON SEALS).
2. GREASE BEARING HOUSING UNTIL PIN EXTENDS FROM PRESSURE RELIEF VALVE (LOCATED 180° FROM GREASE ZERT). USE OF AN UNLEADED EXTREME PRESSURE LITHIUM GREASE, WITH NLGI NO.2 GRADE IS RECOMMENDED. RUN TIME BETWEEN GREASINGS NOT TO EXCEED 2,000 HOURS.
3. **WARNING!!!** INJURY OR DEATH FROM A ROTATING STUB SHAFT CAN OCCUR IF A CONDITION EXISTS WHICH WOULD CAUSE THE SHAFT TO BREAK OR COME APART FROM ANY PART OF THE ASSEMBLY. DEPENDING UPON THE APPLICATION (FOR EXAMPLE, FAN, PULLEY, SHEAVE, ETC.), THE AREA AROUND THE STUB SHAFT MUST BE SUFFICIENTLY GUARDED SO THAT IN THE EVENT OF FAILURE, THE GUARD WILL CONTAIN ANY AIRBORNE PARTS.

THIS DRAWING IS THE PROPERTY OF HAYES MFG. INC. AND IS LOANED SUBJECT TO THE CONDITION THAT IT SHALL NOT BE REPRODUCED, COPIED, LOANED OR OTHERWISE DISPOSED OF, DIRECTLY OR INDIRECTLY. IT SHALL BE USED AS A MEANS OF REFERENCE TO WORK FURNISHED BY THIS COMPANY ONLY AND IS NOT TO BE SUBMITTED TO OUTSIDE PARTIES FOR EXAMINATION WITHOUT OUR CONSENT.

LOMBARDINI 9LD625

SYMBOLS		DET.	PART NUMBER	DESCRIPTION	QTY.
FLATNESS STRAIGHTNESS ANGULARITY PERPENDICULARITY PARALLELISM CONCENTRICITY TRUE POSITION ROUNDNESS CIRCULAR RUN OUT TOTAL RUN OUT CYLINDRICITY FINISH		DO NOT SCALE DRAWING TOLERANCES UNLESS OTHERWISE SPECIFIED .125" MAXIMUM ANGLE ±1/2° FRACTION ±1/32 DECIMAL .00 ±.01 .000 ±.005 .0000 ±.0005			
CLASS MAKE: <input type="checkbox"/> BUY: <input type="checkbox"/>		HAYES MANUFACTURING INC. ® TITLE LOMBARDINI BEARING SUPPORT MATERIAL			
DESCRIPTION		DRAWN BY ZS		DATE 02-10-05	
		CHECKED BY SCALE		DRAWING NO. 995043 SHEET OF REV.	