

REV	DATE	CHANGE DESCRIPTION	MOD.BY	CK1	CK2

# ASSEMBLY NOTE:

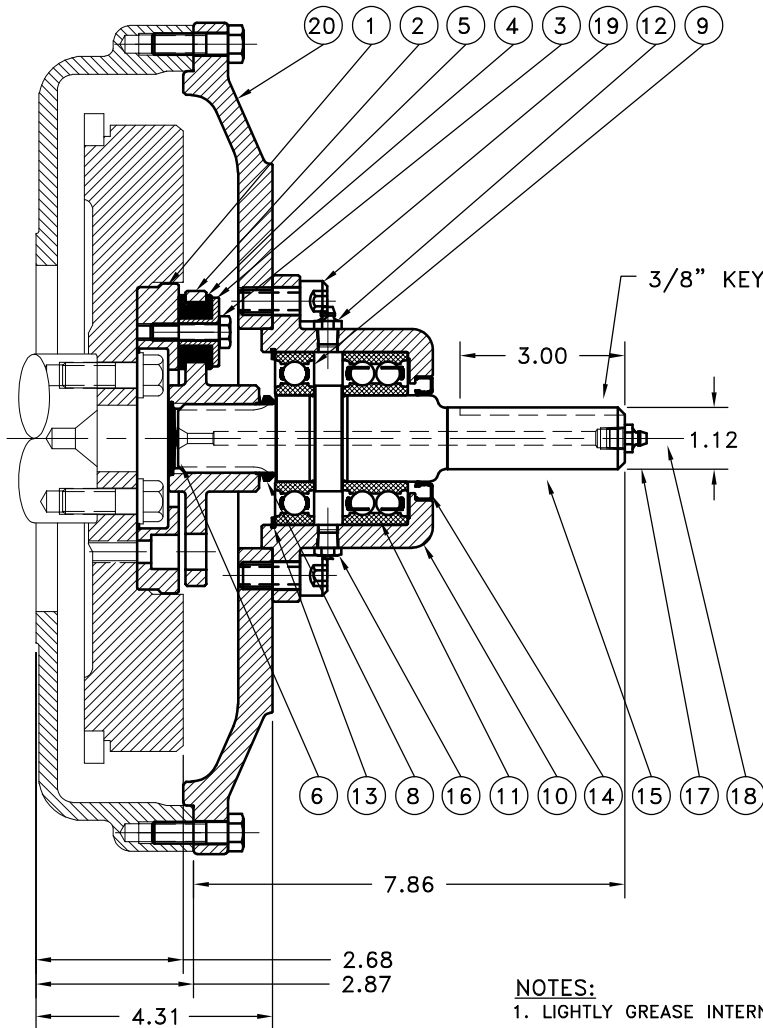
ENSURE THAT THE GREASE ZERK AND RELIEF VALVE ARE LOCATED HORIZONTAL WHEN MOUNTING ON TO PUMP MOUNT PLATE OR HOUSING.

**FITS: GROUP 5 INTERCHANGE**  
**KD625-3,11LD625-3**  
**KDW/LDW 1603, 2204, 2204T**

21	995006	BOLT KIT	1
20	995000-01	HOUSING	1
19	740000	1/2-13-1-1/8 SHCS	4
18	609000	GREASE ZERK	1
17	125294	5/8-11 HHB	1
16	1093K11	RELIEF VALVE	1
15	128097	SPLINED SHAFT	1
14	CRW1-R-15830	SEAL	1
13	RR-314	SPIROLOX SNAP RING	1
12	600000	GREASE ZERK	2
11	5208WD	DOUBLE BEARING	1
10	125007	BEARING HOUSING	1
9	208P	BEARING	1
8	VS-032	V-RING	1
7	801912	GREASE	1
6	R-0017-01	HUBBARD PLUG	1
5	H52500	NEOPRENE INSERT	4
4	123190-01	STEEL BUSHING	4
3	PURCHASE	5/16-24-1 1/4 H.H.B.	4
2	129561	COUPLING HUB	1
1	124814-03	FLYWHEEL PLATE	1

BEARING SUPPORTED  
STUB SHAFT SUB-ASS'Y  
#128098

COUPLING ASS'Y  
#129563



## NOTES:

1. LIGHTLY GREASE INTERNAL AND EXTERNAL AREA OF SPLINE AT ASSEMBLY USING SUPPLIED COUPLING GREASE (OVER GREASING COULD CAUSE A HYDRAULIC TYPE LIFT ON SEALS).
2. **AT ASSEMBLY GREASE BEARING HOUSING UNTIL PIN EXTENDS FROM PRESSURE RELIEF VALVE (LOCATED 180° FROM GREASE ZERK).** USE OF AN UNLEADED EXTREME PRESSURE LITHIUM GREASE, WITH NLGI NO.2 GRADE IS RECOMMENDED. RUN TIME BETWEEN GREASINGS NOT TO EXCEED 2,000 HOURS.
3. **WARNING!!!** INJURY OR DEATH FROM A ROTATING STUB SHAFT CAN OCCUR IF A CONDITION EXISTS WHICH WOULD CAUSE THE SHAFT TO BREAK OR COME APART FROM ANY PART OF THE ASSEMBLY. DEPENDING UPON THE APPLICATION (FOR EXAMPLE, FAN, PULLEY, SHEAVE, ETC.), THE AREA AROUND THE STUB SHAFT MUST BE SUFFICIENTLY GUARDED SO THAT IN THE EVENT OF FAILURE, THE GUARD WILL CONTAIN ANY AIRBORNE PARTS.

THIS DRAWING IS THE PROPERTY OF HAYES MFG. INC. AND IS LOANED SUBJECT TO THE CONDITION THAT IT SHALL NOT BE REPRODUCED, COPIED, LOANED OR OTHERWISE DISPOSED OF, DIRECTLY OR INDIRECTLY. IT SHALL BE USED AS A MEANS OF REFERENCE TO WORK FURNISHED BY THIS COMPANY ONLY AND IS NOT TO BE SUBMITTED TO OUTSIDE PARTIES FOR EXAMINATION WITHOUT OUR CONSENT.

SYMBOLS	DET.	PART NUMBER	DESCRIPTION	QTY.
DO NOT SCALE DRAWING TOLERANCES UNLESS OTHERWISE SPECIFIED 125 MAXIMUM ANGLE ±1/2° FRACTION ±1/32 DECIMAL .00 ±.01 .000 ±.005 .0000 ±.0005	MAKE: <input type="checkbox"/> BUY: <input type="checkbox"/>	DRAWN BY SIETING	DATE 11-18-2013	DRAWING NO. 995078
CLASS DESCRIPTION	CHECKED BY RJH	SCALE	SHEET OF	REV.



TITLE  
**LOMBARDINI BEARING SUPPORTED STUB SHAFT ASS'Y**

MATERIAL

SHEET OF REV.