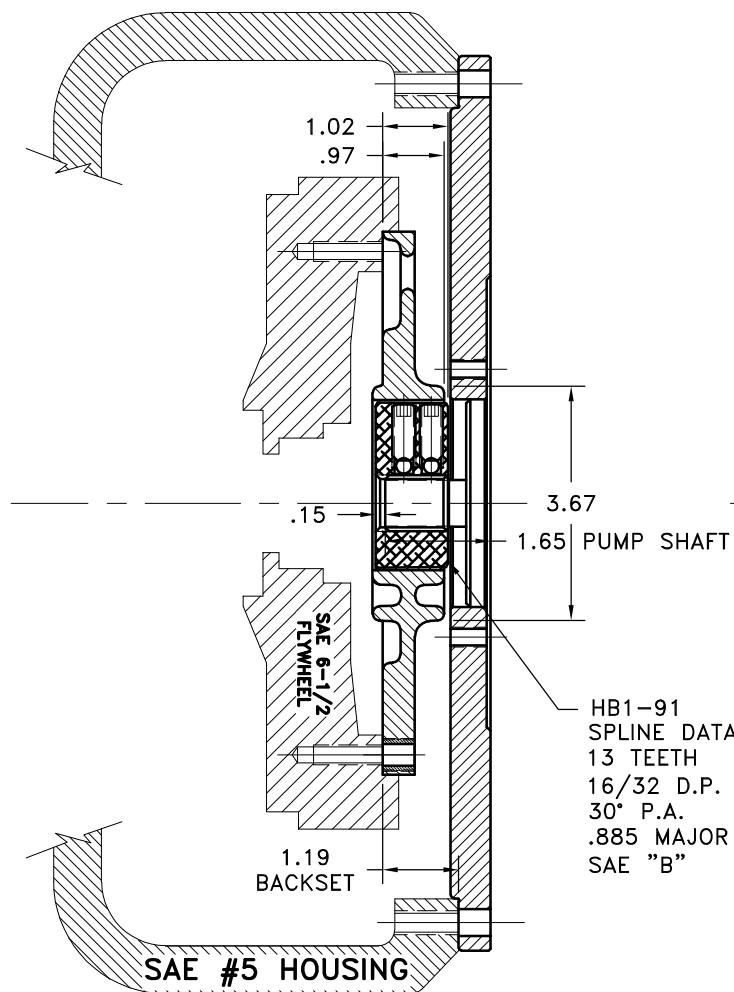
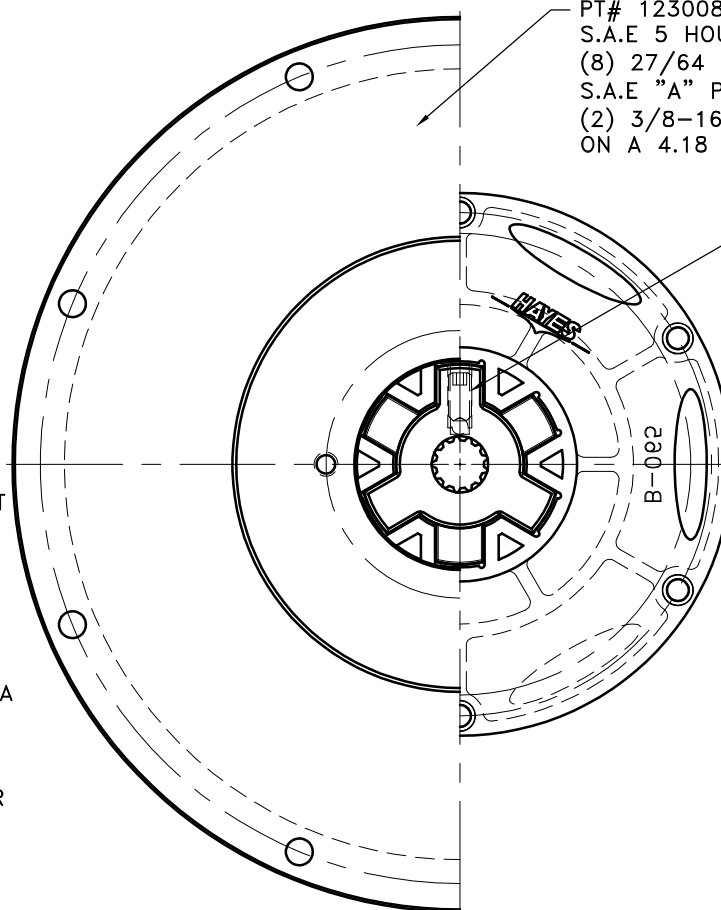


| REV | DATE | CHANGE DESCRIPTION | MOD. BY | CK1 | CK2 |
|-----|------|--------------------|---------|-----|-----|
| | | | | | |



HB1-91
SPLINE DATA
13 TEETH
16/32 D.P.
30° P.A.
.885 MAJOR
SAE "B"



(2) 3/8" SET SCREWS
TORQUE BOTH TO 25
FT. LBS USING
TORQUE WRENCH AT
FINAL INSTALLATION

B-065
S.A.E. 6 1/2 FIBERGLASS REINFORCED
NYLON DRIVE PLATE
(6) 11/32 HOLES EQ.
SPACED ON A 7 7/8 B.C.
"B" SERIES DRIVE

IMPORTANT INSTALLATION NOTE!!!!
IMPROPER INSTALLATION OF HUB COULD CAUSE
PREMATURE WEAR AND OR FAILURE.

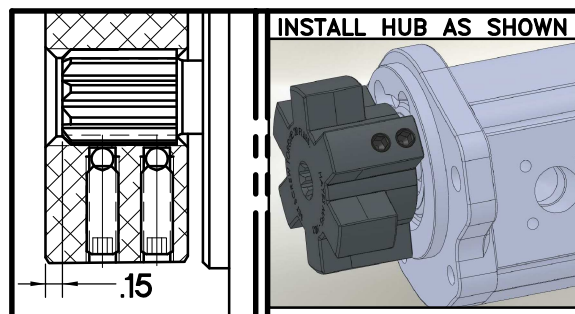
IF YOU HAVE QUESTIONS CONCERNING LOCATION
OF METAL HUB ON PUMP SHAFT PLEASE CONTACT
DISTRIBUTOR OR FACTORY FOR FURTHER
INFORMATION

**BOTH HUB SET SCREWS MUST BE PROPERLY
TORQUED TO 25 FT.LBS. USING TORQUE WRENCH.
PLEASE CONTACT DISTRIBUTOR OR FACTORY FOR
ANY FURTHER QUESTIONS.**

**NOTE: THIS STEP IS IMPORTANT TO
ENSURE FULL SPLINE ENGAGEMENT.**

- 1) PRESET HUB ON SHAFT AS SHOWN.
- 2) IF YOUR PUMP SHAFT VARIES FROM THE DRAWN
SHAFT LENGTH, CONTACT FACTORY FOR
RECOMMENDATIONS.
- 3) **TORQUE BOTH SET SCREWS TO 25 FT.LBS. USING
TORQUE WRENCH.**
- 4) **SHAFT SHOULD HAVE FULL SPLINE ENGAGEMENT INTO
HUB, IF NOT CONTACT FACTORY FOR
RECOMMENDATIONS (231) 879-3372.**

THIS DRAWING IS THE PROPERTY OF HAYES MFG. INC. AND IS LOANED
SUBJECT TO THE CONDITION THAT IT SHALL NOT BE REPRODUCED,
COPIED, LOANED OR OTHERWISE DISPOSED OF, DIRECTLY OR INDIRECTLY.
IT SHALL BE USED AS A MEANS OF REFERENCE TO WORK FURNISHED BY
THIS COMPANY ONLY AND IS NOT TO BE SUBMITTED TO OUTSIDE PARTIES
FOR EXAMINATION WITHOUT OUR CONSENT.



SET HUB AS SHOWN

**"B" SERIES TORQUE RANGE
30-75 HP**

| DET. | PART NUMBER | DESCRIPTION | QTY. |
|------|-------------|-------------------------------|------|
| 3 | 123008-GN2 | PUMP MOUNT PLATE | 1 |
| 2 | HB1-91 | B SERIES HEX~FLX HUB | 1 |
| 1 | B-065 | SAE 6 1/2 HEX~FLX DRIVE PLATE | 1 |

| | | | | | |
|---|--|--|--|--|--|
| SYMBOLS FLATNESS STRAIGHTNESS ANGULARITY PERPENDICULARITY PARALLELISM CONCENTRICITY TRUE POSITION ROUNDNESS CIRCULAR RUN OUT TOTAL RUN OUT CYLINDRICITY FINISH | | DO NOT SCALE DRAWING TOLERANCES UNLESS OTHERWISE SPECIFIED 125 MAXIMUM ANGLE ±1/2° FRACTION ±1/32 DECIMAL .00 ±.01 .000 ±.005 .0000 ±.0005 | | HAYES MANUFACTURING INC. ® TITLE "B" SERIES HEX~FLX COUPLING W/PMF MATERIAL | |
| CLASS HEXB-065 DESCRIPTION B-065,5,13T16/32,A2 | | MAKE: <input checked="" type="checkbox"/> BUY: <input type="checkbox"/> DRAWN BY SIETING CHECKED BY RJH | | DATE 06-25-2013 SCALE DRAWING NO. B-065-HB1-91-GN2 SHEET OF REV. | |