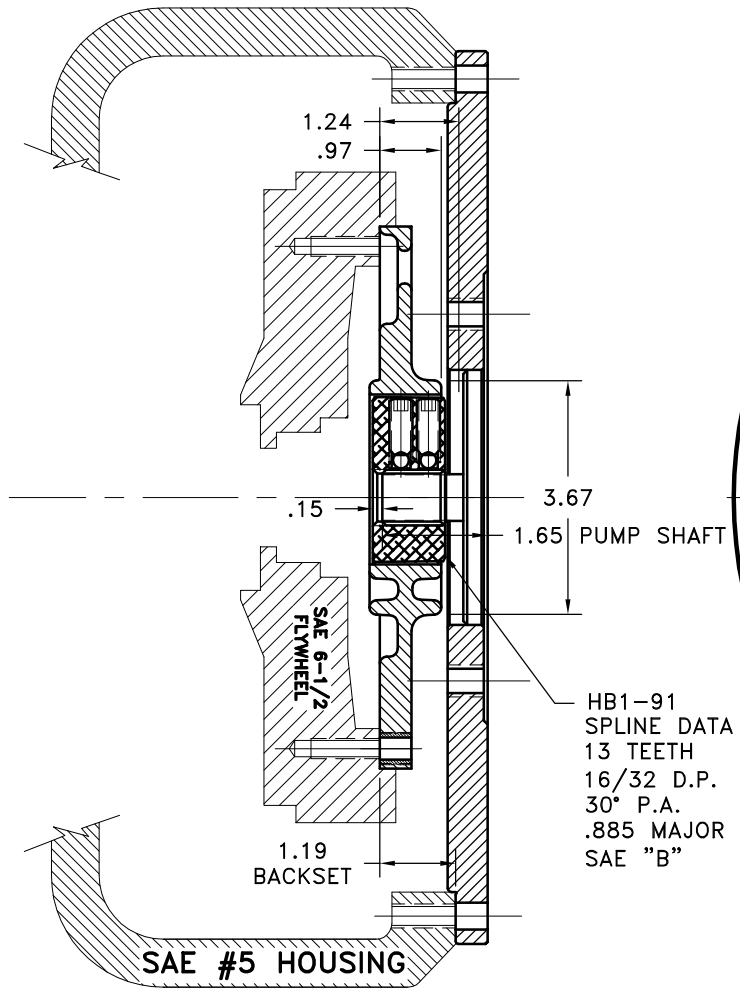
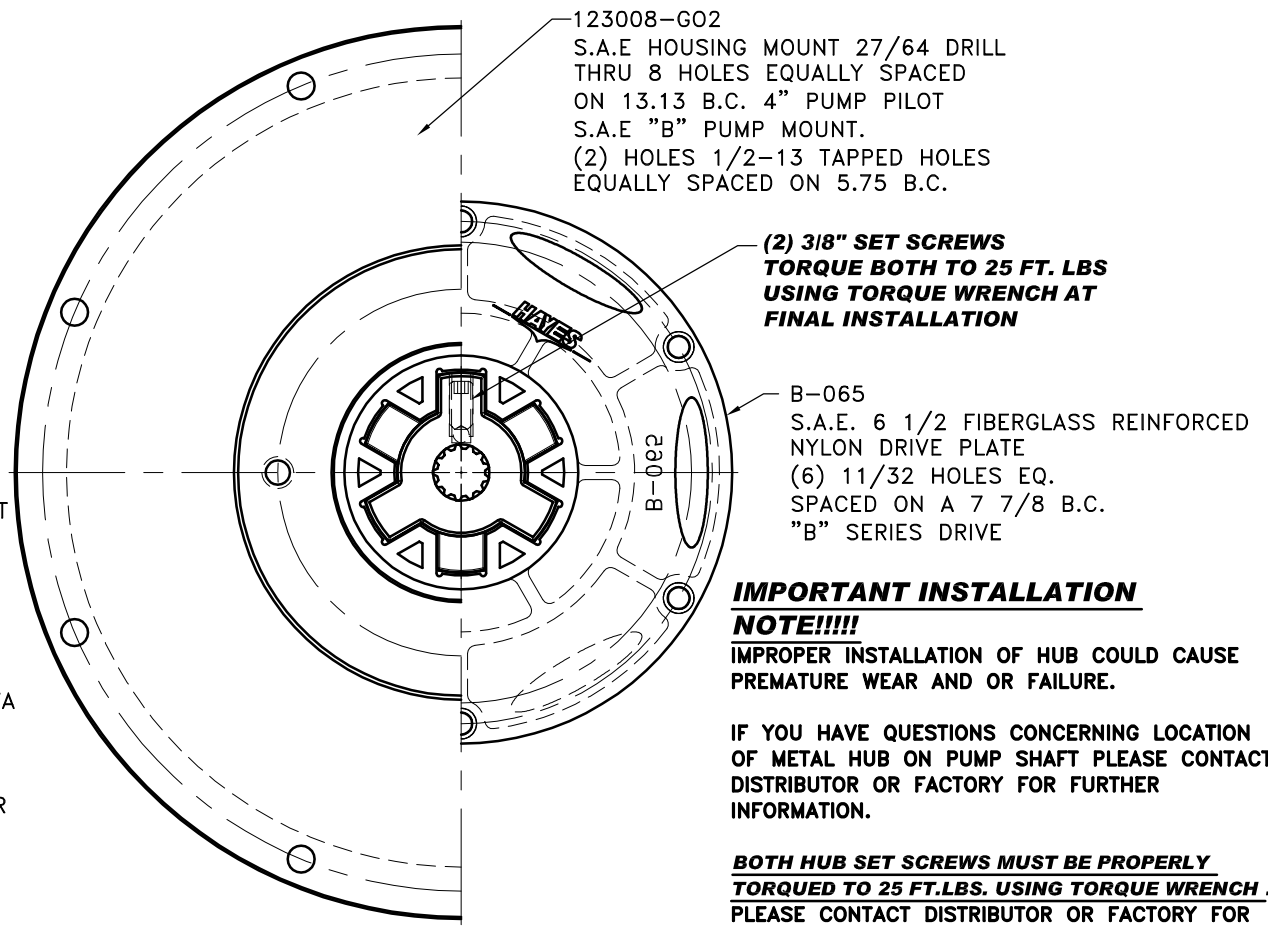


REV	DATE	CHANGE DESCRIPTION	MOD.BY	CK1	CK2



HB1-91
SPLINE DATA
13 TEETH
16/32 D.P.
30° P.A.
.885 MAJOR
SAE "B"



123008-GO2
S.A.E HOUSING MOUNT 27/64 DRILL
THRU 8 HOLES EQUALLY SPACED
ON 13.13 B.C. 4" PUMP PILOT
S.A.E "B" PUMP MOUNT.
(2) HOLES 1/2-13 TAPPED HOLES
EQUALLY SPACED ON 5.75 B.C.

(2) 3/8" SET SCREWS
**TORQUE BOTH TO 25 FT. LBS
USING TORQUE WRENCH AT
FINAL INSTALLATION**

B-065
S.A.E. 6 1/2 FIBERGLASS REINFORCED
NYLON DRIVE PLATE
(6) 11/32 HOLES EQ.
SPACED ON A 7 7/8 B.C.
"B" SERIES DRIVE

**IMPORTANT INSTALLATION
NOTE!!!!**

IMPROPER INSTALLATION OF HUB COULD CAUSE
PREMATURE WEAR AND OR FAILURE.

IF YOU HAVE QUESTIONS CONCERNING LOCATION
OF METAL HUB ON PUMP SHAFT PLEASE CONTACT
DISTRIBUTOR OR FACTORY FOR FURTHER
INFORMATION.

**BOTH HUB SET SCREWS MUST BE PROPERLY
TORQUED TO 25 FT.LBS. USING TORQUE WRENCH.**
PLEASE CONTACT DISTRIBUTOR OR FACTORY FOR
ANY FURTHER QUESTIONS.

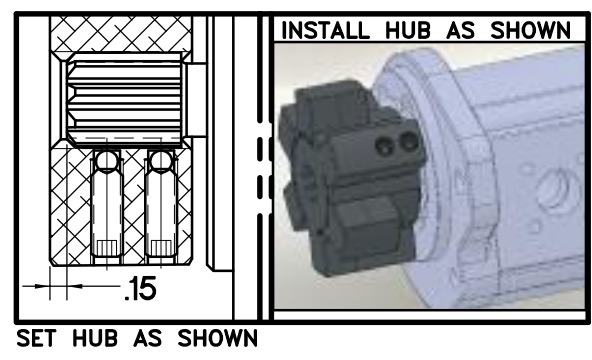
**"B" SERIES TORQUE RANGE
30-75 HP**

QTY.	DESCRIPTION	PART NUMBER	DET.
1	PUMP MOUNT PLATE	123008-GO2	3
1	B SERIES HEX~FLX HUB	HB1-91	2
1	SAE 6 1/2 HEX~FLX DRIVE PLATE	B-065	1

**NOTE: THIS STEP IS IMPORTANT TO
ENSURE FULL SPLINE ENGAGEMENT.**

- 1) PRESET HUB ON SHAFT AS SHOWN.
- 2) IF YOUR PUMP SHAFT VARIES FROM THE DRAWN SHAFT LENGTH, CONTACT FACTORY FOR RECOMMENDATIONS.
- 3) **TORQUE BOTH SET SCREWS TO 25 FT.LBS. USING TORQUE WRENCH.**
- 4) SHAFT SHOULD HAVE FULL SPLINE ENGAGEMENT INTO HUB, IF NOT CONTACT FACTORY FOR RECOMMENDATIONS (231) 879-3372.

THIS DRAWING IS THE PROPERTY OF HAYES MFG. INC. AND IS LOANED SUBJECT TO THE CONDITION THAT IT SHALL NOT BE REPRODUCED, COPIED, LOANED OR OTHERWISE DISPOSED OF, DIRECTLY OR INDIRECTLY. IT SHALL BE USED AS A MEANS OF REFERENCE TO WORK FURNISHED BY THIS COMPANY ONLY AND IS NOT TO BE SUBMITTED TO OUTSIDE PARTIES FOR EXAMINATION WITHOUT OUR CONSENT.



SYMBOLS		DET.	PART NUMBER	DESCRIPTION	QTY.
—	FLATNESS	DO NOT SCALE DRAWING			
—	STRAIGHTNESS	TOLERANCES UNLESS OTHERWISE SPECIFIED			
—	ANGULARITY	1/32" MAXIMUM			
—	PERPENDICULARITY	ANGLE ±1/2°			
—	PARALLELISM	FRACTION ±1/32			
—	CONCENTRICITY	DECIMAL			
—	TRUE POSITION	.00 ±.01			
—	ROUNDNESS	.000 ±.005			
—	CIRCULAR RUN OUT	.0000 ±.0005			
—	TOTAL RUN OUT	—			
—	CYLINDRICITY	—			
—	FINISH	—			
<p>— UNLESS OTHERWISE SPECIFIED — REMOVE FIRST THREAD ON ALL TAPPED HOLES BREAK ALL SHARP CORNERS .010 TO .020 STAMP OR MARK DRAWING NO.</p>					
<p>HAYES MANUFACTURING INC. ®</p>		<p>TITLE "B" SERIES HEX~FLX COUPLING W/PMP</p>		<p>DRAWN BY LAWSON</p>	
<p>MATERIAL</p>		<p>DATE 1-14-09</p>		<p>DRAWING NO. B-065-HB1-91-GO2</p>	
<p>— UNLESS OTHERWISE SPECIFIED — REMOVE FIRST THREAD ON ALL TAPPED HOLES BREAK ALL SHARP CORNERS .010 TO .020 STAMP OR MARK DRAWING NO.</p>		<p>CHECKED BY RJH</p>		<p>SCALE SHEET OF REV.</p>	