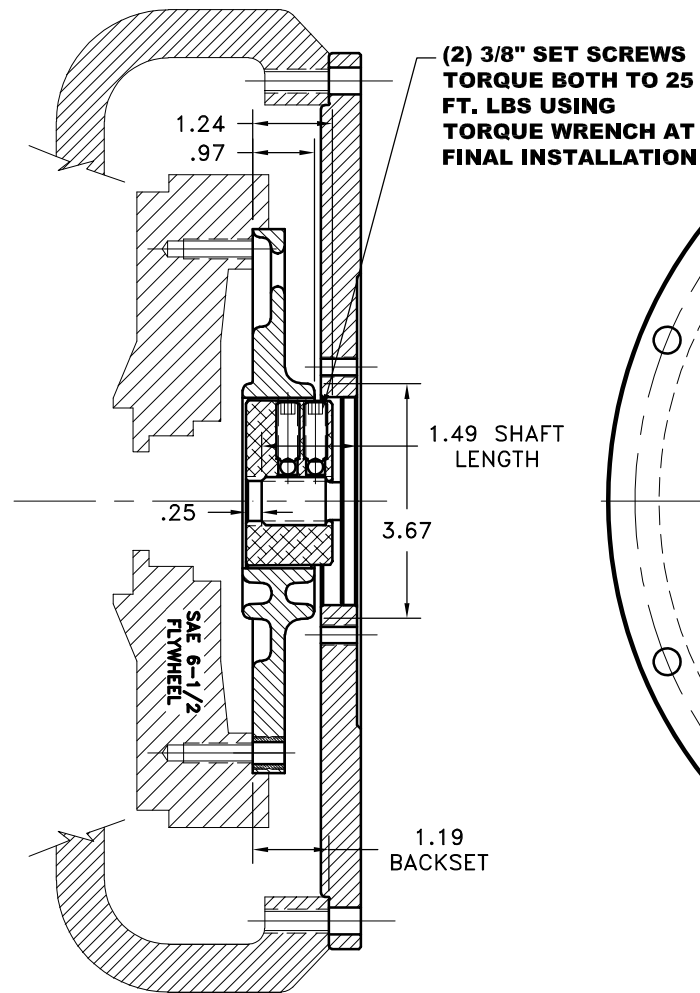


REV	DATE	CHANGE DESCRIPTION	MOD.BY	CK1	CK2

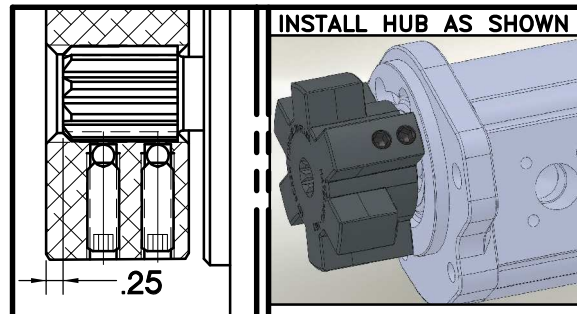


SAE #5 HOUSING

**NOTE: THIS STEP IS IMPORTANT TO  
ENSURE FULL SPLINE ENGAGEMENT.**

- 1) PRESET HUB ON SHAFT AS SHOWN.
- 2) IF YOUR PUMP SHAFT VARIES FROM THE DRAWN SHAFT LENGTH, CONTACT FACTORY FOR RECOMMENDATIONS.
- 3) **TORQUE BOTH SET SCREWS TO 25 FT.LBS. USING TORQUE WRENCH.**
- 4) **SHAFT SHOULD HAVE FULL SPLINE ENGAGEMENT INTO HUB, IF NOT CONTACT FACTORY FOR RECOMMENDATIONS (231) 879-3372.**

THIS DRAWING IS THE PROPERTY OF HAYES MFG. INC. AND IS LOANED SUBJECT TO THE CONDITION THAT IT SHALL NOT BE REPRODUCED, COPIED, LOANED OR OTHERWISE DISPOSED OF, DIRECTLY OR INDIRECTLY. IT SHALL BE USED AS A MEANS OF REFERENCE TO WORK FURNISHED BY THIS COMPANY ONLY AND IS NOT TO BE SUBMITTED TO OUTSIDE PARTIES FOR EXAMINATION WITHOUT OUR CONSENT.



SET HUB AS SHOWN

PT# 123008-GN2  
S.A.E HOUSING MOUNT 27/64 DRILL  
THRU 8 HOLES EQUALLY SPACED  
ON 13.13 B.C. 3.25 PUMP PILOT  
S.A.E "A" PUMP MOUNT.  
(2) 3/8-16 TAPPED HOLES EQUALLY  
SPACED ON 4.18 B.C.

B-065  
S.A.E. 6 1/2 FIBERGLASS REINFORCED  
NYLON DRIVE PLATE  
(6) 11/32 HOLES EQ.  
SPACED ON A 7 7/8 B.C.  
"B" SERIES DRIVE

**IMPORTANT INSTALLATION NOTE!!!!**  
IMPROPER INSTALLATION OF HUB COULD CAUSE  
PREMATURE WEAR AND OR FAILURE.

IF YOU HAVE QUESTIONS CONCERNING LOCATION  
OF METAL HUB ON PUMP SHAFT PLEASE CONTACT  
DISTRIBUTOR OR FACTORY FOR FURTHER  
INFORMATION

**BOTH HUB SET SCREWS MUST BE PROPERLY  
TORQUED TO 25 FT.LBS. USING TORQUE WRENCH.  
PLEASE CONTACT DISTRIBUTOR OR FACTORY FOR  
ANY FURTHER QUESTIONS.**

HB2-87  
SPLINE DATA  
11 TEETH  
16/32 D.P.  
30° P.A.  
.770 MAJOR

**"B" SERIES TORQUE RANGE  
30-75 HP**

3	123008-GN2	PUMP MOUNT PLATE	1
2	HB2-87	B SERIES HEX~FLX HUB	1
1	B-065	SAE 6 1/2 HEX~FLX DRIVE PLATE	1

<b>SYMBOLS</b> ——— FLATNESS ——— STRAIGHTNESS ——— ANGULARITY ——— PERPENDICULARITY ——— PARALLELISM ——— CONCENTRICITY ——— TRUE POSITION ——— ROUNDNESS ——— CIRCULAR RUN OUT ——— TOTAL RUN OUT ——— CYLINDRICITY ——— FINISH		DO NOT SCALE DRAWING TOLERANCES UNLESS OTHERWISE SPECIFIED 125/ MAXIMUM ANGLE ±1/2° FRACTION ±1/32 DECIMAL .00 ±.01 .000 ±.005 .0000 ±.0005	<b>HAYES</b> MANUFACTURING INC. ® TITLE HEX-FLX PUMP DRIVE KIT MATERIAL
CLASS SAE 6.5 DESCRIPTION 6-1/2,5,11T16/32,A2	MAKE: <input checked="" type="checkbox"/> BUY: <input type="checkbox"/>	DRAWN BY SIETING CHECKED BY SCALE	DATE 10-16-2015 DRAWING NO. B-065-HB2-87-GN2 SHEET OF REV.