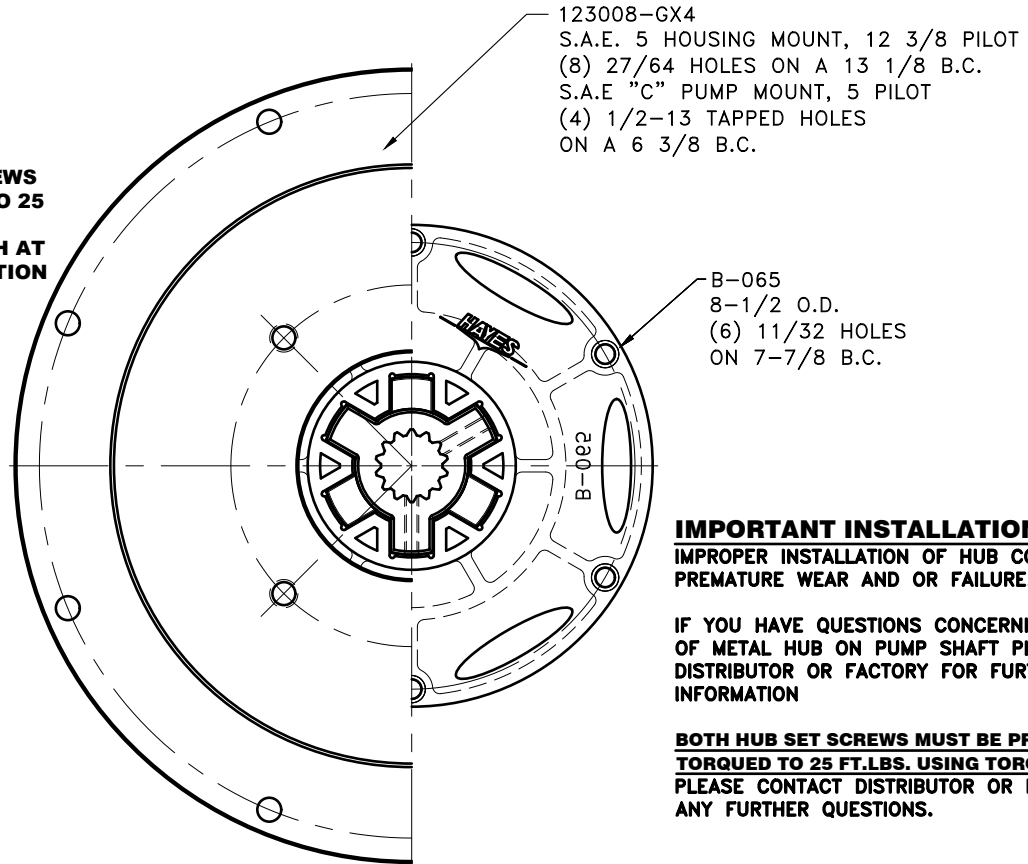
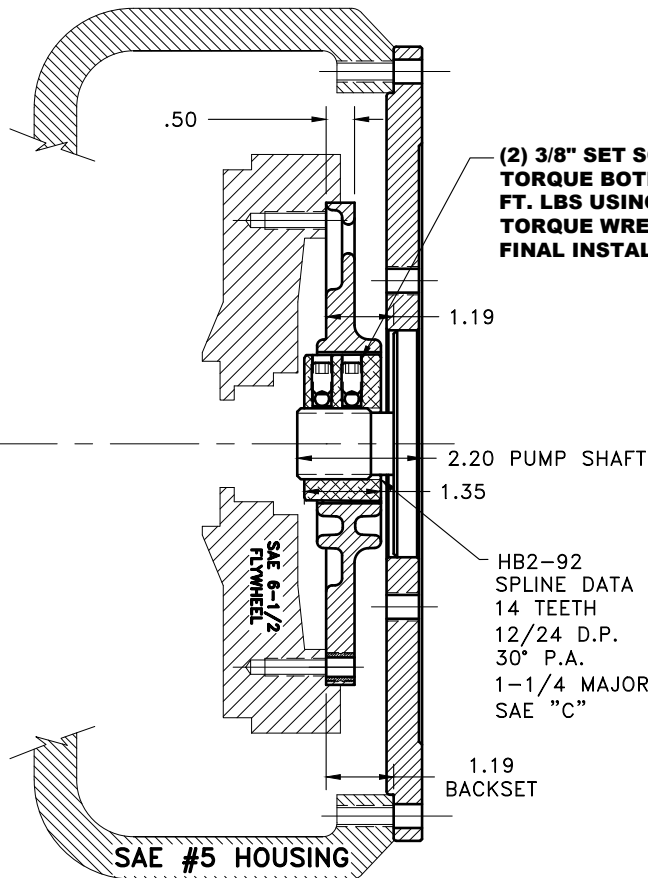


REV	DATE	CHANGE DESCRIPTION	MOD.BY	CK1	CK2



IMPORTANT INSTALLATION NOTE!!!!
IMPROPER INSTALLATION OF HUB COULD CAUSE
PREMATURE WEAR AND OR FAILURE.

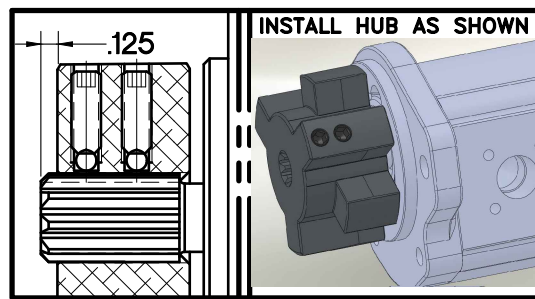
IF YOU HAVE QUESTIONS CONCERNING LOCATION
OF METAL HUB ON PUMP SHAFT PLEASE CONTACT
DISTRIBUTOR OR FACTORY FOR FURTHER
INFORMATION

**BOTH HUB SET SCREWS MUST BE PROPERLY
TORQUED TO 25 FT.LBS. USING TORQUE WRENCH.**
PLEASE CONTACT DISTRIBUTOR OR FACTORY FOR
ANY FURTHER QUESTIONS.

**NOTE: THIS STEP IS IMPORTANT TO
ENSURE FULL SPLINE ENGAGEMENT.**

- 1) PRESET HUB ON SHAFT AS SHOWN.
- 2) IF YOUR PUMP SHAFT VARIES FROM THE DRAWN
SHAFT LENGTH, CONTACT FACTORY FOR
RECOMMENDATIONS.
- 3) **TORQUE BOTH SET SCREWS TO 25 FT.LBS. USING
TORQUE WRENCH.**
- 4) **SHAFT SHOULD HAVE FULL SPLINE ENGAGEMENT INTO
HUB, IF NOT CONTACT FACTORY FOR
RECOMMENDATIONS (231) 879-3372.**

THIS DRAWING IS THE PROPERTY OF HAYES MFG. INC. AND IS LOANED
SUBJECT TO THE CONDITION THAT IT SHALL NOT BE REPRODUCED,
COPIED, LOANED OR OTHERWISE DISPOSED OF, DIRECTLY OR INDIRECTLY.
IT SHALL BE USED AS A MEANS OF REFERENCE TO WORK FURNISHED BY
THIS COMPANY ONLY AND IS NOT TO BE SUBMITTED TO OUTSIDE PARTIES
FOR EXAMINATION WITHOUT OUR CONSENT.



**B TORQUE RANGE
(30-75 HP)**

DET.	PART NUMBER	DESCRIPTION	QTY.
3	123008-GX4	PUMP MOUNT PLATE	1
2	HB2-92	B SERIES HEX~FLX HUB	1
1	B-065	SAE 6 1/2 HEX~FLX DRIVE PLATE	1

SYMBOLS		DET.	PART NUMBER	DESCRIPTION	QTY.
—	FLATNESS	DO NOT SCALE			
—	STRAIGHTNESS	DRAWING			
—	ANGULARITY	TOLERANCES UNLESS			
—	PERPENDICULARITY	OTHERWISE SPECIFIED			
—	PARALLELISM	1/32" MAXIMUM			
—	CONCENTRICITY	ANGLE ±1/2°			
—	TRUE POSITION	FRACTION ±1/32			
—	ROUNDNESS	DECIMAL			
—	CIRCULAR RUN OUT	.00 ±.01			
—	TOTAL RUN OUT	.000 ±.005			
—	CYLINDRICITY	.0000 ±.0005			
—	FINISH				
CLASS		SAE 6.5		MAKE: <input checked="" type="checkbox"/> BUY: <input type="checkbox"/>	DRAWN BY
DESCRIPTION		6-1/2, 5, 14T12/24, C4		CHECKED BY	DATE
				SCALE	07-19-2017
					DRAWING NO.
					B-065-HB2-92-GX4
					SHEET OF REV.