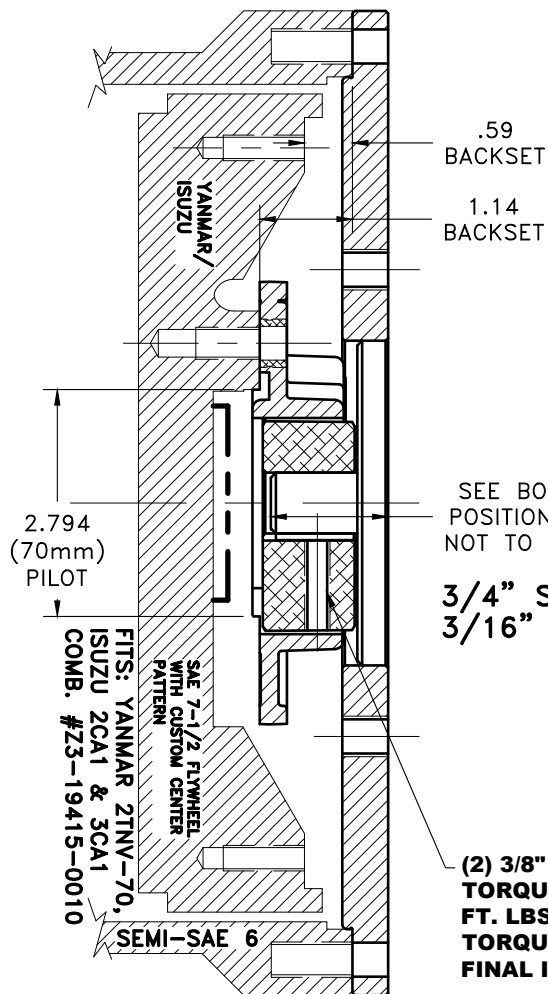


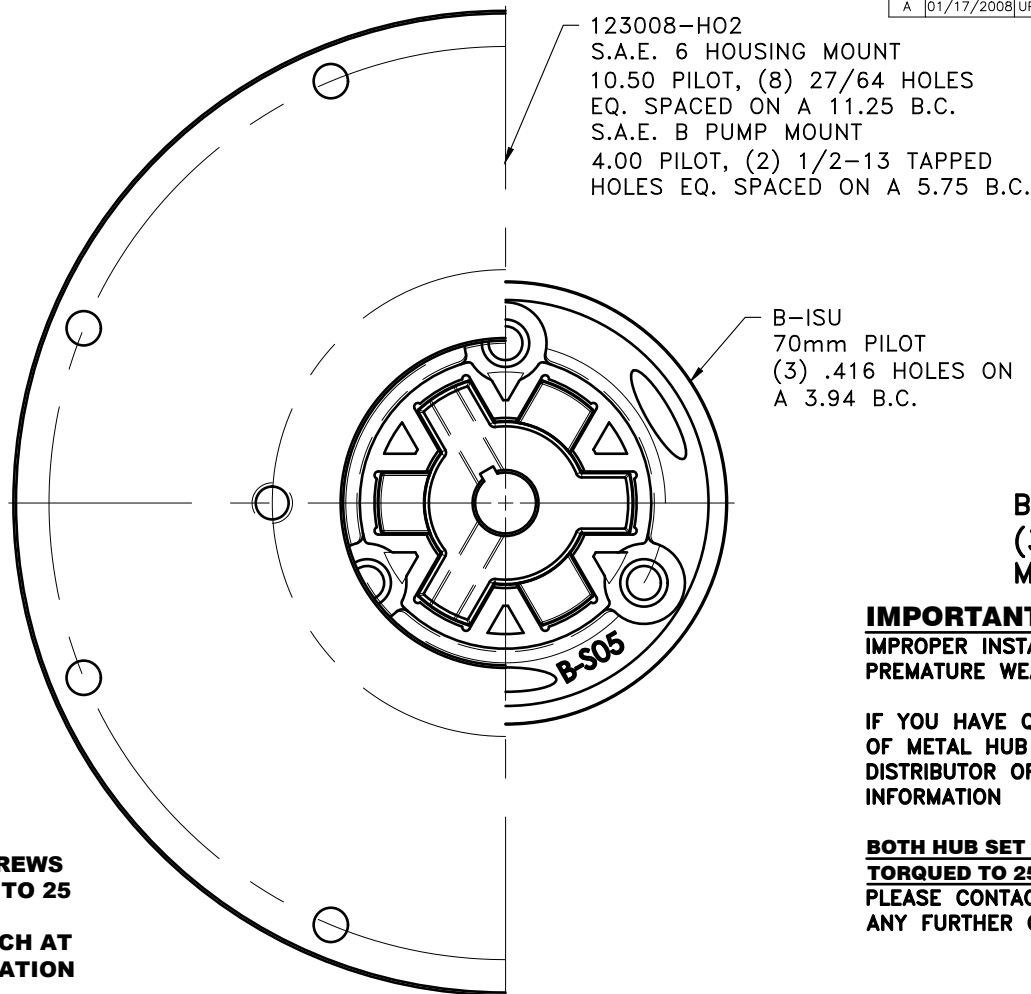
REV	DATE	CHANGE DESCRIPTION	MOD.BY	CK1	CK2
A	01/17/2008	UPDATED NOTES.	ZS	RJH	JM



SEE BOX TO POSITION HUB
NOT TO SCALE

3/4" SHAFT
3/16" KEY

(2) 3/8" SET SCREWS
TORQUE BOTH TO 25
FT. LBS USING
TORQUE WRENCH AT
FINAL INSTALLATION



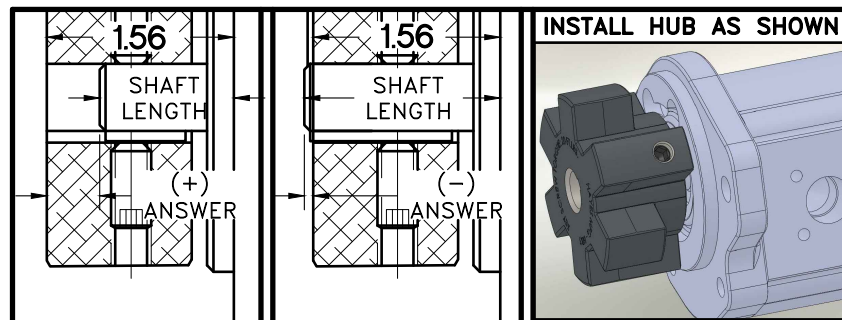
B TORQUE RANGE
(30-75 HP)
MAX TORQUE 550 FT.LBS.

IMPORTANT INSTALLATION NOTE!!!!
IMPROPER INSTALLATION OF HUB COULD CAUSE
PREMATURE WEAR AND OR FAILURE.

IF YOU HAVE QUESTIONS CONCERNING LOCATION
OF METAL HUB ON PUMP SHAFT PLEASE CONTACT
DISTRIBUTOR OR FACTORY FOR FURTHER
INFORMATION

BOTH HUB SET SCREWS MUST BE PROPERLY
TORQUED TO 25 FT.LBS. USING TORQUE WRENCH.
PLEASE CONTACT DISTRIBUTOR OR FACTORY FOR
ANY FURTHER QUESTIONS.

NOTE: THIS STEP IS IMPORTANT TO
ENSURE FULL SHAFT ENGAGEMENT.



NOTE: REMOVE HUB FROM ASS'Y, PRESET HUB ON SHAFT
AS SHOWN. TORQUE BOTH SET SCREWS TO 25 FT.LBS.
USING TORQUE WRENCH. SHAFT SHOULD HAVE A
MINIMUM OF 3/4" OF ENGAGEMENT IF NOT CONTACT
FACTORY FOR RECOMMENDATIONS (231) 879-3372 TO
GET HUB PRESET USE THIS EQUATION:

PERFORM CALCULATION BELOW:

1.56 - SHAFT LENGTH - HUB PRESET

IF YOUR ANSWER IS (+) SHAFT IS INSIDE OF HUB, IF
YOUR ANSWER IS (-) SHAFT STICKS OUT OF HUB.
(SEE BOXES)

THIS DRAWING IS THE PROPERTY OF HAYES MFG. INC. AND IS LOANED
SUBJECT TO THE CONDITION THAT IT SHALL NOT BE REPRODUCED,
COPIED, LOANED OR OTHERWISE DISPOSED OF, DIRECTLY OR INDIRECTLY.
IT SHALL BE USED AS A MEANS OF REFERENCE TO WORK FURNISHED BY
THIS COMPANY ONLY AND IS NOT TO BE SUBMITTED TO OUTSIDE PARTIES
FOR EXAMINATION WITHOUT OUR CONSENT.

3	123008-HO2	PUMP MOUNT PLATE	1
2	HB1-07	COUPLING HUB	1
1	B-ISU	HEX~FLX DRIVE PLATE	1

DET.	PART NUMBER	DESCRIPTION	QTY.
DO NOT SCALE DRAWING			
TOLERANCES UNLESS OTHERWISE SPECIFIED			
125 MAXIMUM			
ANGLE ±1/2°			
FRACTION ±1/32			
DECIMAL			
.00 ±.01			
.0000 ±.005			
.0000 ±.0005			
CLASS	MAKE: <input type="checkbox"/> BUY: <input type="checkbox"/>	DRAWN BY: SIETING	DATE: 04-16-07
DESCRIPTION	CHECKED BY: RJH	SCALE	DRAWING NO. B-ISU-6-07-B2
			SHEET OF REV.

HAYES
MANUFACTURING INC. ®

TITLE: **HEX~FLX COUPLING ASS'Y WITH PUMP MOUNT PLATE**

MATERIAL: