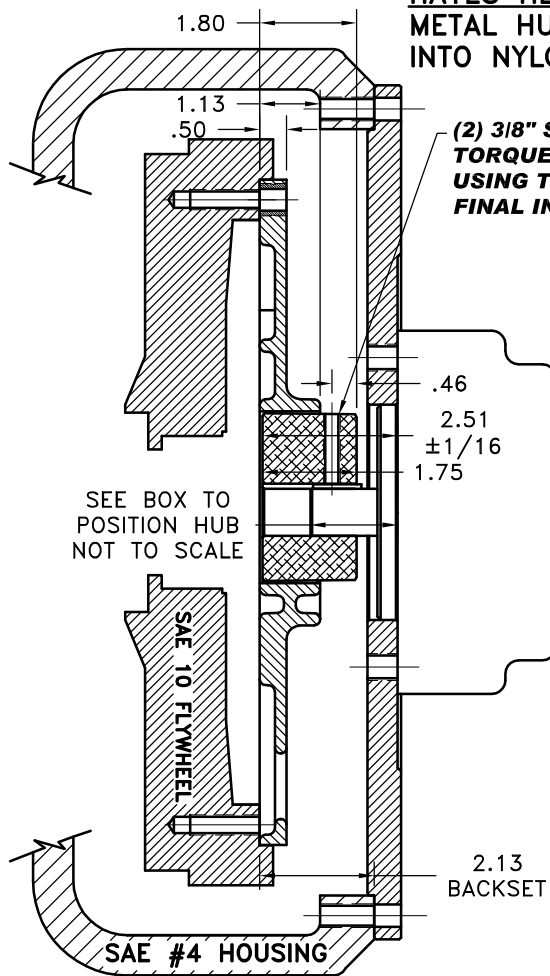


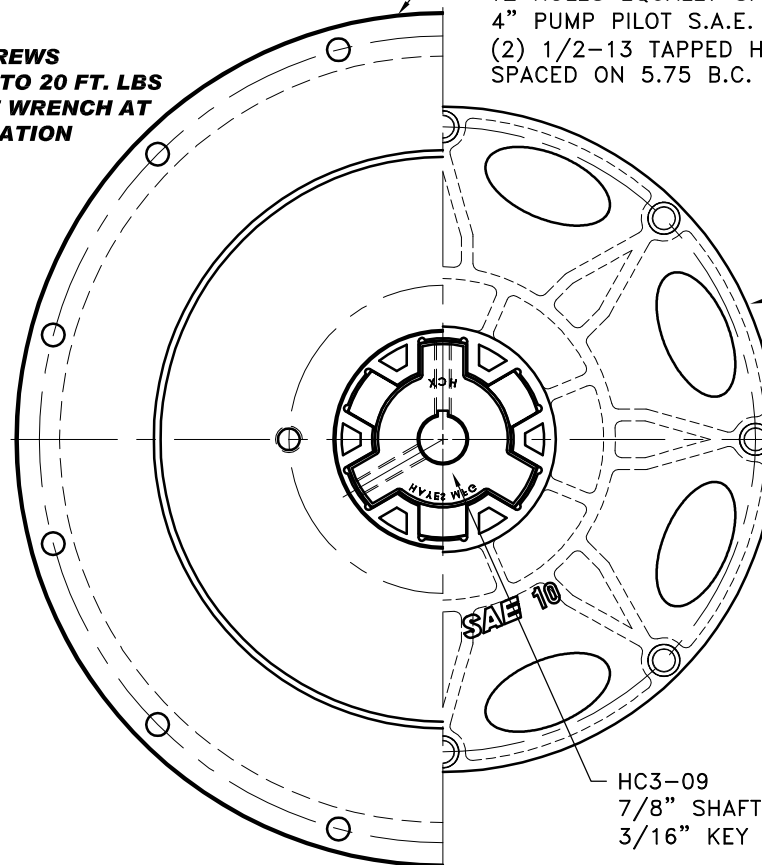
REV	DATE	CHANGE DESCRIPTION	MOD.BY	CK1	CK2
A	01/17/2008	UPDATED NOTES	ZS		

HAYES HEX~FLX ASSEMBLY NOTE: **METAL HUB SHOULD BE FULLY ENGAGED** **INTO NYLON DRIVE PLATE.**



(2) 3/8" SET SCREWS
TORQUE BOTH TO 20 FT. LBS
USING TORQUE WRENCH AT
FINAL INSTALLATION

PT# 123008-E02
 S.A.E. HOUSING MOUNT 27/64 DRILL THRU
 12 HOLES EQUALLY SPACED ON 15.00 B.C.
 4" PUMP PILOT S.A.E. "B" PUMP MOUNT.
 (2) 1/2-13 TAPPED HOLES EQUALLY
 SPACED ON 5.75 B.C.



C-010
 S.A.E. 10 FIBERGLASS REINFORCED
 NYLON DRIVE PLATE
 (8) .416 HOLES EQ.
 SPACED ON A 11.625 B.C.
 "C" SERIES DRIVE

IMPORTANT INSTALLATION **NOTE!!!!**

IMPROPER INSTALLATION OF HUB COULD CAUSE
 PREMATURE WEAR AND OR FAILURE.

IF YOU HAVE QUESTIONS CONCERNING LOCATION
 OF METAL HUB ON PUMP SHAFT PLEASE CONTACT
 DISTRIBUTOR OR FACTORY FOR FURTHER
 INFORMATION.

BOTH HUB SET SCREWS MUST BE PROPERLY
TORQUED TO 25 FT.LBS. USING TORQUE WRENCH .
PLEASE CONTACT DISTRIBUTOR OR FACTORY FOR
ANY FURTHER QUESTIONS.

C SERIES TORQUE RANGE
65-175 HP

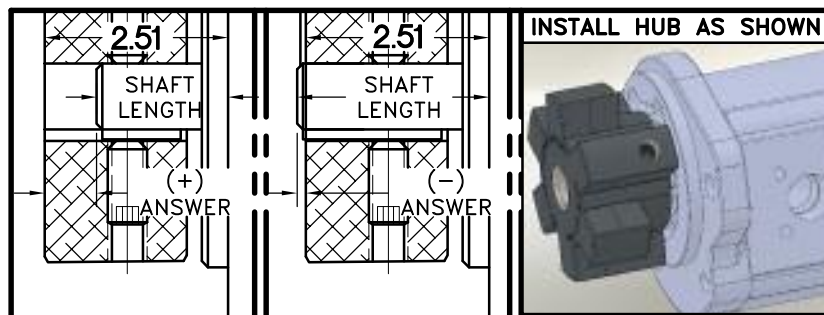
NOTE: REMOVE HUB FROM ASS'Y, PRESET HUB ON SHAFT
 AS SHOWN. **TORQUE BOTH SET SCREWS TO 25 FT.LBS.**
USING TORQUE WRENCH. SHAFT SHOULD HAVE A
 MINIMUM OF 3/4" OF ENGAGEMENT IF NOT CONTACT
 FACTORY FOR RECOMMENDATIONS (231) 879-3372 TO
 GET HUB PRESET USE THIS EQUATION:

PERFORM CALCULATION BELOW:

2.51 - SHAFT LENGTH - HUB PRESET

IF YOUR ANSWER IS (+) SHAFT IS INSIDE OF HUB, IF
 YOUR ANSWER IS (-) SHAFT STICKS OUT OF HUB.
 (SEE BOXES)

NOTE: THIS STEP IS IMPORTANT TO
 ENSURE FULL SHAFT ENGAGEMENT.



DET.	PART NUMBER	DESCRIPTION	QTY.
3	123008-E02	PUMP MOUNT PLTE	1
2	HC3-09	C SERIES HEX~FLX HUB	1
1	C-010	SAE 10 HEX~FLX DRIVE PLATE	1

SYMBOLS	DO NOT SCALE DRAWING	TOLERANCES UNLESS OTHERWISE SPECIFIED
FLATNESS	ANGLE ±1/2°	FRACTION ±1/32
STRAIGHTNESS	DECIMAL	.00 ±.01
ANGULARITY	TOTAL RUN OUT	.000 ±.005
PERPENDICULARITY	CYLINDRICITY	.0000 ±.0005
PARALLELISM	FINISH	
CONCENTRICITY		
TRUE POSITION		
ROUNDNESS		
CIRCULAR RUN OUT		
TOTAL RUN OUT		
CYLINDRICITY		
FINISH		

HAYES MANUFACTURING INC. ®	
TITLE HEX~FLX "C" SERIES 2 PIECE COUPLING	
MATERIAL	
DRAWN BY SIETING	DATE 06-12-07
CHECKED BY RJH	SCALE
DRAWING NO. C-010-HC3-09-E02	
SHEET OF REV.	

THIS DRAWING IS THE PROPERTY OF HAYES MFG. INC. AND IS LOANED
 SUBJECT TO THE CONDITION THAT IT SHALL NOT BE REPRODUCED,
 COPIED, LOANED OR OTHERWISE DISPOSED OF, DIRECTLY OR INDIRECTLY.
 IT SHALL BE USED AS A MEANS OF REFERENCE TO WORK FURNISHED BY
 THIS COMPANY ONLY AND IS NOT TO BE SUBMITTED TO OUTSIDE PARTIES
 FOR EXAMINATION WITHOUT OUR CONSENT.