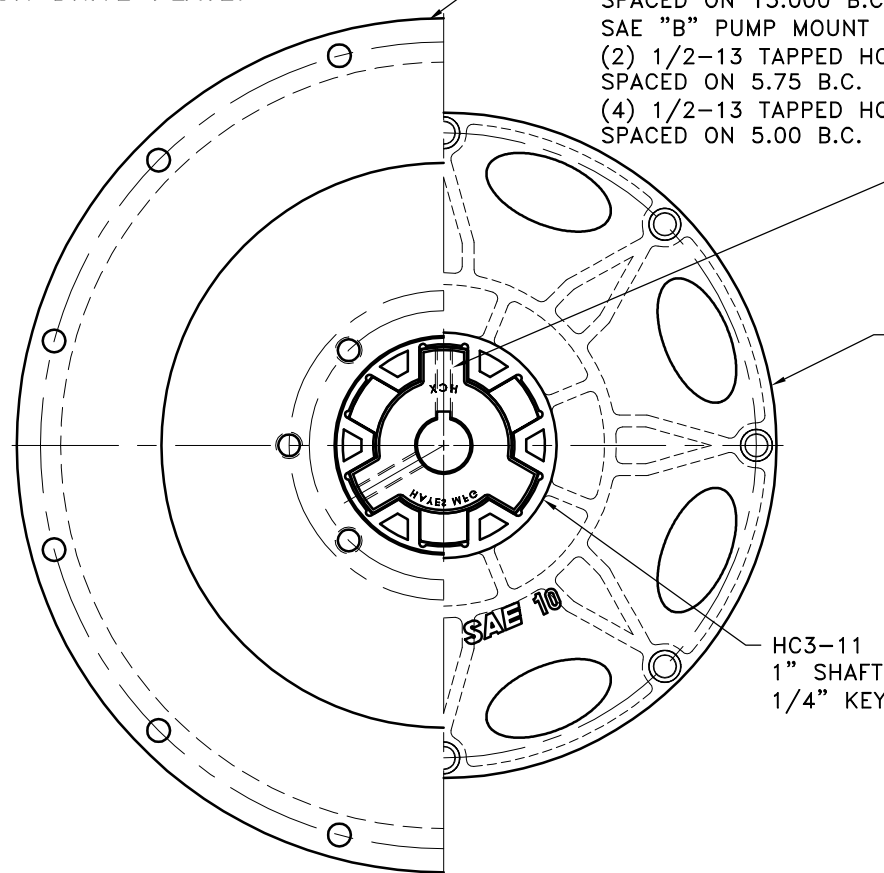


**HAYES HEX~FLX ASSEMBLY NOTE:**  
**METAL HUB SHOULD BE FULLY ENGAGED INTO NYLON DRIVE PLATE.**

P/N 123845-04  
 SAE #4 HOUSING MOUNT  
 (12) 27/64 DRILL THRU EQUALLY  
 SPACED ON 15.000 B.C.  
 SAE "B" PUMP MOUNT 4.00 PILOT  
 (2) 1/2-13 TAPPED HOLES EQ.  
 SPACED ON 5.75 B.C.  
 (4) 1/2-13 TAPPED HOLES EQ.  
 SPACED ON 5.00 B.C.



**(2) 3/8" SET SCREWS**  
**TORQUE BOTH TO 20 FT. LBS**  
**USING TORQUE WRENCH AT**  
**FINAL INSTALLATION**

C-010  
 S.A.E. 10 FIBERGLASS REINFORCED  
 NYLON DRIVE PLATE  
 (8) .416 HOLES EQ.  
 SPACED ON A 11.625 B.C.  
 "C" SERIES DRIVE

**IMPORTANT INSTALLATION**  
**NOTE!!!!**

**IMPROPER INSTALLATION OF HUB COULD CAUSE**  
**PREMATURE WEAR AND OR FAILURE.**

**IF YOU HAVE QUESTIONS CONCERNING LOCATION**  
**OF METAL HUB ON PUMP SHAFT PLEASE CONTACT**  
**DISTRIBUTOR OR FACTORY FOR FURTHER**  
**INFORMATION.**

**BOTH HUB SET SCREWS MUST BE PROPERLY**  
**TORQUED TO 25 FT.LBS. USING TORQUE WRENCH .**  
**PLEASE CONTACT DISTRIBUTOR OR FACTORY FOR**  
**ANY FURTHER QUESTIONS.**

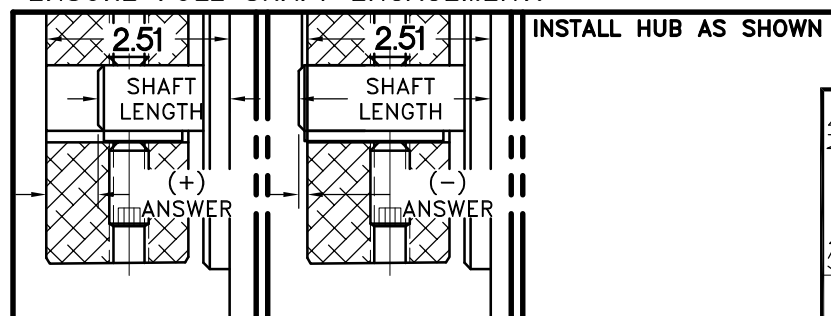
NOTE: REMOVE HUB FROM ASS'Y, PRESET HUB ON SHAFT  
 AS SHOWN. **TORQUE BOTH SET SCREWS TO 25 FT.LBS.**  
**USING TORQUE WRENCH.** SHAFT SHOULD HAVE A  
 MINIMUM OF 3/4" OF ENGAGEMENT IF NOT CONTACT  
 FACTORY FOR RECOMMENDATIONS (231) 879-3372 TO  
 GET HUB PRESET USE THIS EQUATION:

**PERFORM CALCULATION BELOW:**  
**2.51 - SHAFT LENGTH - HUB PRESET**

IF YOUR ANSWER IS (+) SHAFT IS INSIDE OF HUB, IF  
 YOUR ANSWER IS (-) SHAFT STICKS OUT OF HUB.  
 (SEE BOXES)

THIS DRAWING IS THE PROPERTY OF HAYES MFG. INC. AND IS LOANED  
 SUBJECT TO THE CONDITION THAT IT SHALL NOT BE REPRODUCED,  
 COPIED, LOANED OR OTHERWISE DISPOSED OF, DIRECTLY OR INDIRECTLY.  
 IT SHALL BE USED AS A MEANS OF REFERENCE TO WORK FURNISHED BY  
 THIS COMPANY ONLY AND IS NOT TO BE SUBMITTED TO OUTSIDE PARTIES  
 FOR EXAMINATION WITHOUT OUR CONSENT.

**NOTE: THIS STEP IS IMPORTANT TO**  
**ENSURE FULL SHAFT ENGAGEMENT.**



**INSTALL HUB AS SHOWN**

**"C" SERIES TORQUE RANGE**  
**65-175 HP**

3	123845-04	PUMP MOUNT PLTE	1
2	HC3-11	C SERIES HEX~FLX HUB	1
1	C-010	SAE 10 HEX~FLX DRIVE PLATE	1

DET.	PART NUMBER	DESCRIPTION	QTY.
1	123845-04	PUMP MOUNT PLTE	1
2	HC3-11	C SERIES HEX~FLX HUB	1
3	C-010	SAE 10 HEX~FLX DRIVE PLATE	1

<b>SYMBOLS</b> FLATNESS STRAIGHTNESS ANGULARITY PERPENDICULARITY PARALLELISM CONCENTRICITY TRUE POSITION ROUNDNESS CIRCULAR RUN OUT TOTAL RUN OUT CYLINDRICITY FINISH	DO NOT SCALE DRAWING TOLERANCES UNLESS OTHERWISE SPECIFIED .125 MAXIMUM ANGLE ±1/2° FRACTION ±1/32 DECIMAL .00 ±.01 .000 ±.005 .0000 ±.0005	<b>HAYES</b> MANUFACTURING INC. ® <b>TITLE</b> HEX~FLX "C" SERIES 2 PIECE COUPLING <b>MATERIAL</b>
- UNLESS OTHERWISE SPECIFIED - REMOVE FIRST THREAD ON ALL TAPPED HOLES BREAK ALL SHARP CORNERS .010 TO .020 STAMP OR MARK DRAWING NO.	<b>DRAWN BY</b> SIETING <b>CHECKED BY</b> RJH	<b>DATE</b> 09-20-07 <b>SCALE</b>  <b>DRAWING NO.</b> C-010-HC3-11-E024 <b>SHEET</b> OF <b>REV.</b>