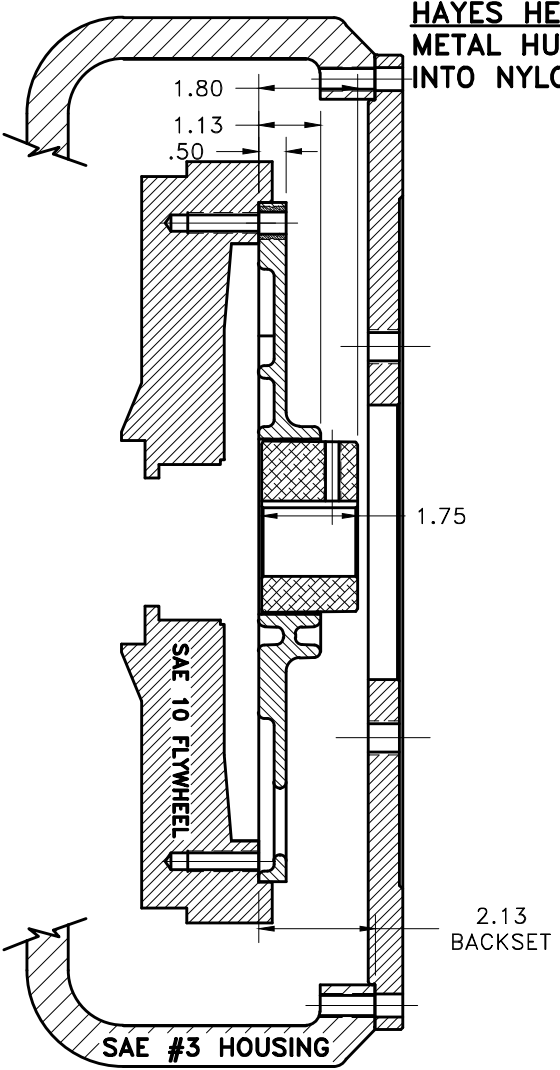
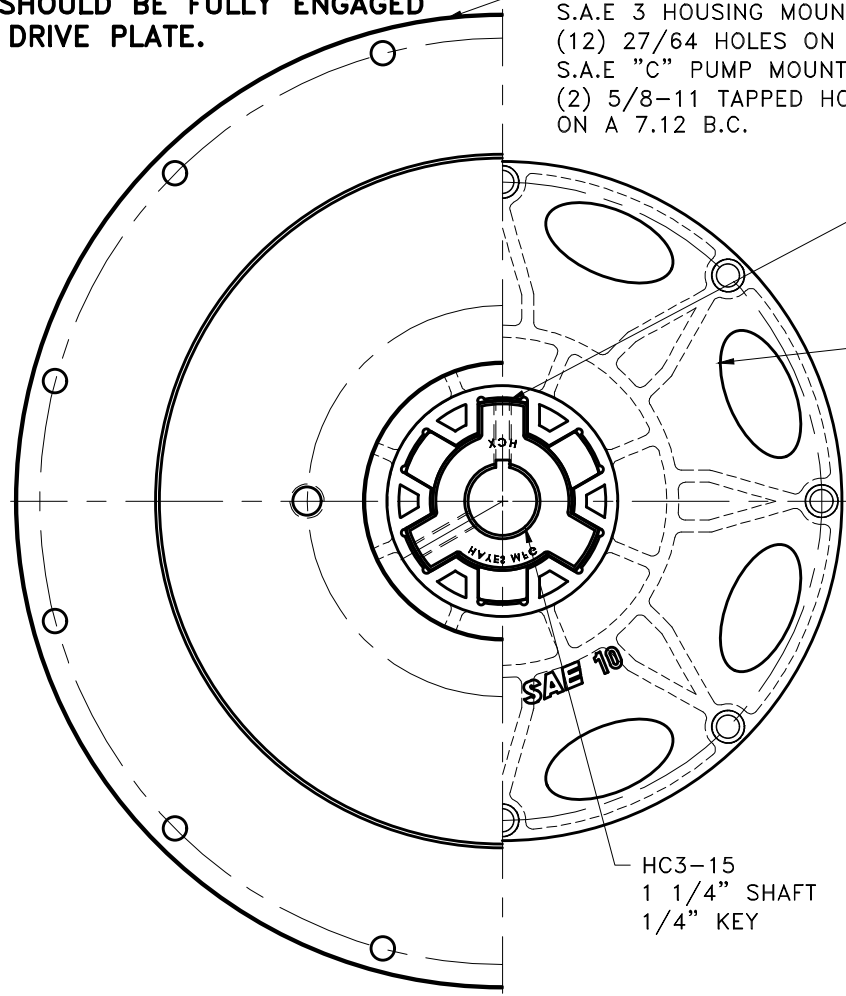


REV	DATE	CHANGE DESCRIPTION	MOD.BY	CK1	CK2



HAYES HEX~FLX ASSEMBLY NOTE:
METAL HUB SHOULD BE FULLY ENGAGED INTO NYLON DRIVE PLATE.

123008-DX2
 S.A.E 3 HOUSING MOUNT, 16.13 PILOT
 (12) 27/64 HOLES ON 16.88 B.C.
 S.A.E "C" PUMP MOUNT, 5.00 PILOT
 (2) 5/8-11 TAPPED HOLES ON A 7.12 B.C.



(2) 3/8" SET SCREWS TORQUE BOTH TO 20 FT. LBS USING TORQUE WRENCH AT FINAL INSTALLATION

C-010
 S.A.E. 10 FIBERGLASS REINFORCED NYLON DRIVE PLATE
 (8) .416 HOLES EQ. SPACED ON A 11.625 B.C.
 "C" SERIES DRIVE

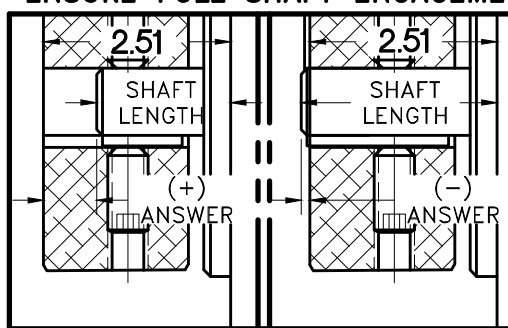
IMPORTANT INSTALLATION NOTE!!!!
IMPROPER INSTALLATION OF HUB COULD CAUSE PREMATURE WEAR AND OR FAILURE.

IF YOU HAVE QUESTIONS CONCERNING LOCATION OF METAL HUB ON PUMP SHAFT PLEASE CONTACT DISTRIBUTOR OR FACTORY FOR FURTHER INFORMATION

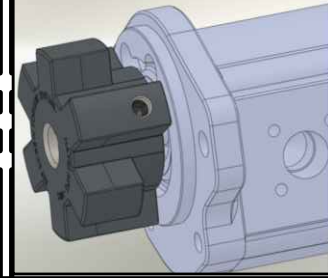
BOTH HUB SET SCREWS MUST BE PROPERLY TORQUED TO 25 FT.LBS. USING TORQUE WRENCH. PLEASE CONTACT DISTRIBUTOR OR FACTORY FOR ANY FURTHER QUESTIONS.

HC3-15
 1 1/4" SHAFT
 1/4" KEY

NOTE: THIS STEP IS IMPORTANT TO ENSURE FULL SHAFT ENGAGEMENT.



INSTALL HUB AS SHOWN



"C" SERIES TORQUE RANGE 65-175 HP

3	123008-DX2	PUMP MOUNT PLTE	1
2	HC3-15	C SERIES HEX~FLX HUB	1
1	C-010	SAE 10 HEX~FLX DRIVE PLATE	1

NOTE: REMOVE HUB FROM ASS'Y, PRESET HUB ON SHAFT AS SHOWN. TORQUE BOTH SET SCREWS TO 25 FT.LBS. USING TORQUE WRENCH. SHAFT SHOULD HAVE A MINIMUM OF 3/4" OF ENGAGEMENT IF NOT CONTACT FACTORY FOR RECOMMENDATIONS (231) 879-3372 TO GET HUB PRESET USE THIS EQUATION:

PERFORM CALCULATION BELOW:
2.51 - SHAFT LENGTH = HUB PRESET

IF YOUR ANSWER IS (+) SHAFT IS INSIDE OF HUB, IF YOUR ANSWER IS (-) SHAFT STICKS OUT OF HUB. (SEE BOXES)

THIS DRAWING IS THE PROPERTY OF HAYES MFG. INC. AND IS LOANED SUBJECT TO THE CONDITION THAT IT SHALL NOT BE REPRODUCED, COPIED, LOANED OR OTHERWISE DISPOSED OF, DIRECTLY OR INDIRECTLY. IT SHALL BE USED AS A MEANS OF REFERENCE TO WORK FURNISHED BY THIS COMPANY ONLY AND IS NOT TO BE SUBMITTED TO OUTSIDE PARTIES FOR EXAMINATION WITHOUT OUR CONSENT.

SYMBOLS ——— FLATNESS ——— STRAIGHTNESS ——— ANGULARITY ——— PERPENDICULARITY ——— PARALLELISM ——— CONCENTRICITY ——— TRUE POSITION ——— ROUNDNESS ——— CIRCULAR RUN OUT ——— TOTAL RUN OUT ——— FINISH		DO NOT SCALE DRAWING TOLERANCES UNLESS OTHERWISE SPECIFIED .125" MAXIMUM ANGLE ±1/2" FRACTION ±1/32 DECIMAL .00 ±.01 .000 ±.005 .0000 ±.0005		 TITLE HEX~FLX "C" SERIES 2 PIECE COUPLING MATERIAL	
CLASS DESCRIPTION	MAKE: <input type="checkbox"/> BUY: <input type="checkbox"/>	DRAWN BY SIETING CHECKED BY RJH	DATE 07-07-08 SCALE	DRAWING NO. C-010-HC3-15-DX2 SHEET OF REV.	