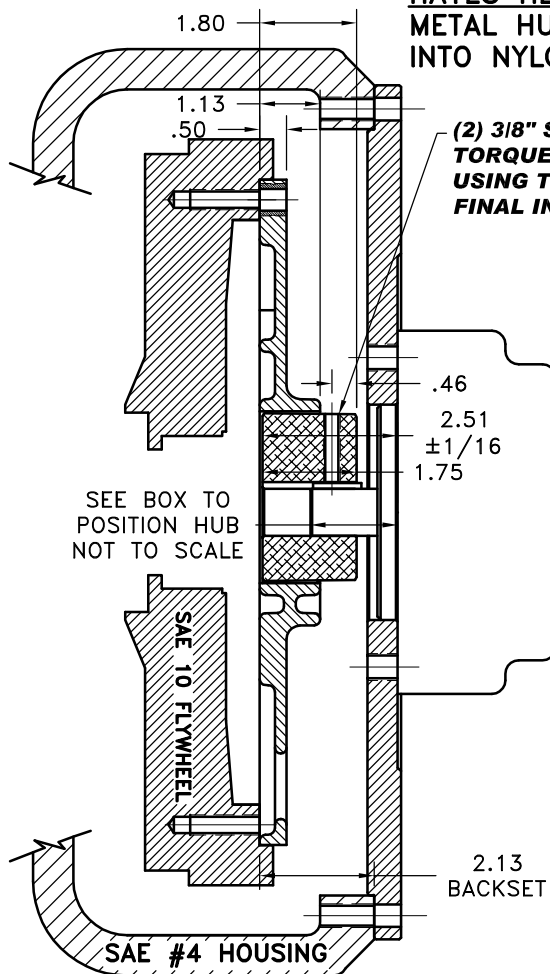
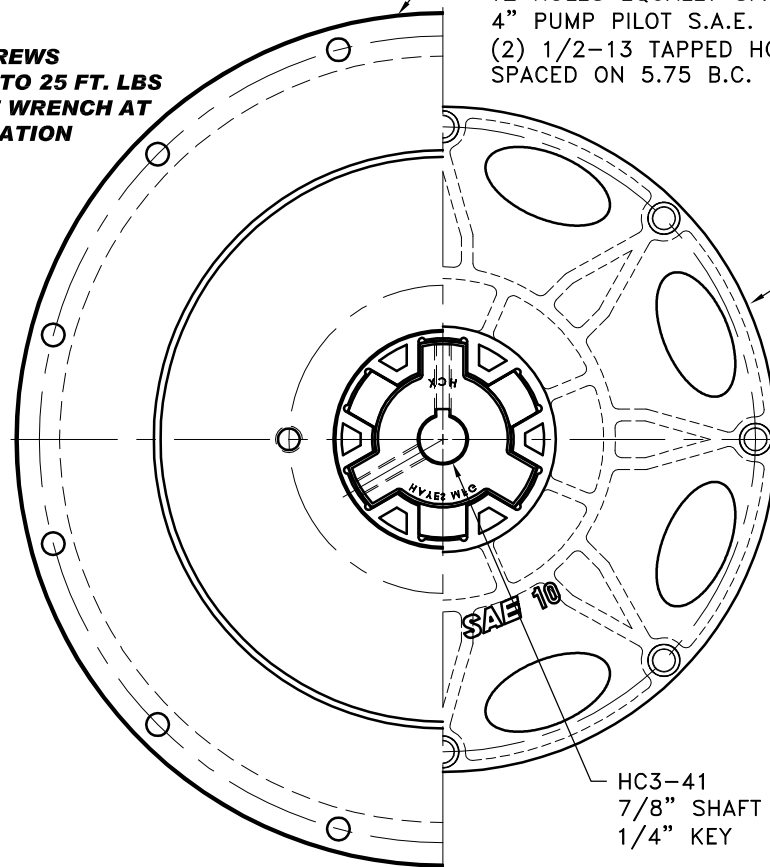


REV	DATE	CHANGE DESCRIPTION	MOD.BY	CK1	CK2
A1	10/16/2009	UPDATED S.S. TORQUE	ZS	RJH	HM

HAYES HEX~FLX ASSEMBLY NOTE: **METAL HUB SHOULD BE FULLY ENGAGED INTO NYLON DRIVE PLATE.**



PT# 123008-E02
 S.A.E. HOUSING MOUNT 27/64 DRILL THRU
 12 HOLES EQUALLY SPACED ON 15.00 B.C.
 4" PUMP PILOT S.A.E. "B" PUMP MOUNT.
 (2) 1/2-13 TAPPED HOLES EQUALLY
 SPACED ON 5.75 B.C.



C-010
 S.A.E. 10 FIBERGLASS REINFORCED
 NYLON DRIVE PLATE
 (8) .416 HOLES EQ.
 SPACED ON A 11.625 B.C.
 "C" SERIES DRIVE

IMPORTANT INSTALLATION NOTE!!!!

IMPROPER INSTALLATION OF HUB COULD CAUSE
 PREMATURE WEAR AND OR FAILURE.

IF YOU HAVE QUESTIONS CONCERNING LOCATION
 OF METAL HUB ON PUMP SHAFT PLEASE CONTACT
 DISTRIBUTOR OR FACTORY FOR FURTHER
 INFORMATION.

**BOTH HUB SET SCREWS MUST BE PROPERLY
 TORQUED TO 25 FT.LBS. USING TORQUE WRENCH .
 PLEASE CONTACT DISTRIBUTOR OR FACTORY FOR
 ANY FURTHER QUESTIONS.**

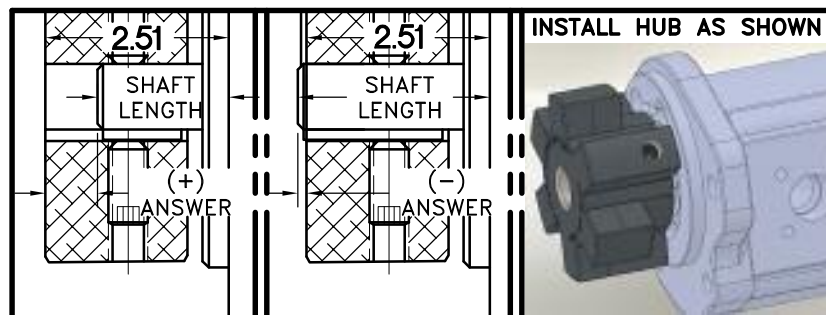
NOTE: REMOVE HUB FROM ASS'Y, PRESET HUB ON SHAFT
 AS SHOWN. **TORQUE BOTH SET SCREWS TO 25 FT.LBS.
 USING TORQUE WRENCH.** SHAFT SHOULD HAVE A
 MINIMUM OF 3/4" OF ENGAGEMENT IF NOT CONTACT
 FACTORY FOR RECOMMENDATIONS (231) 879-3372 TO
 GET HUB PRESET USE THIS EQUATION:

PERFORM CALCULATION BELOW:

2.51 - SHAFT LENGTH - HUB PRESET

IF YOUR ANSWER IS (+) SHAFT IS INSIDE OF HUB, IF
 YOUR ANSWER IS (-) SHAFT STICKS OUT OF HUB.
 (SEE BOXES)

NOTE: THIS STEP IS IMPORTANT TO
 ENSURE FULL SHAFT ENGAGEMENT.



**"C" SERIES TORQUE RANGE
 65-175 HP**

DET.	PART NUMBER	DESCRIPTION	QTY.
3	123008-E02	PUMP MOUNT PLATE	1
2	HC3-41	C SERIES HEX~FLX HUB	1
1	C-010	SAE 10 HEX~FLX DRIVE PLATE	1

SYMBOLS	DO NOT SCALE DRAWING	TOLERANCES UNLESS OTHERWISE SPECIFIED	MANUFACTURING INC. ®
FLATNESS	ANGLE ±1/2°	FRACTION ±1/32	TITLE HEX~FLX "C" SERIES 2 PIECE COUPLING
STRAIGHTNESS	DECIMAL	.00 ±.01	MATERIAL
ANGULARITY	TOTAL RUN OUT	.000 ±.005	
PERPENDICULARITY	CYLINDRICITY	.0000 ±.0005	
PARALLELISM	FINISH		
CONCENTRICITY			
TRUE POSITION			
ROUNDNESS			
CIRCULAR RUN OUT			
TOTAL RUN OUT			
CYLINDRICITY			
FINISH			
- UNLESS OTHERWISE SPECIFIED - REMOVE FIRST THREAD ON ALL TAPPED HOLES BREAK ALL SHARP CORNERS .010 TO .020 STAMP OR MARK DRAWING NO.		DRAWN BY SIETING CHECKED BY RJH	DATE 03-20-08 SCALE DRAWING NO. C-010-HC3-41-E02 SHEET OF REV.

THIS DRAWING IS THE PROPERTY OF HAYES MFG. INC. AND IS LOANED
 SUBJECT TO THE CONDITION THAT IT SHALL NOT BE REPRODUCED,
 COPIED, LOANED OR OTHERWISE DISPOSED OF, DIRECTLY OR INDIRECTLY.
 IT SHALL BE USED AS A MEANS OF REFERENCE TO WORK FURNISHED BY
 THIS COMPANY ONLY AND IS NOT TO BE SUBMITTED TO OUTSIDE PARTIES
 FOR EXAMINATION WITHOUT OUR CONSENT.