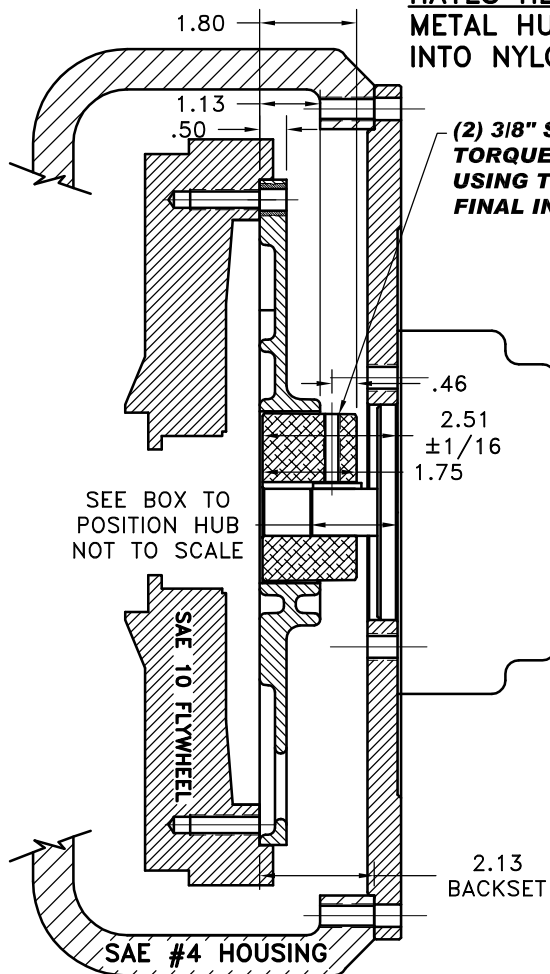
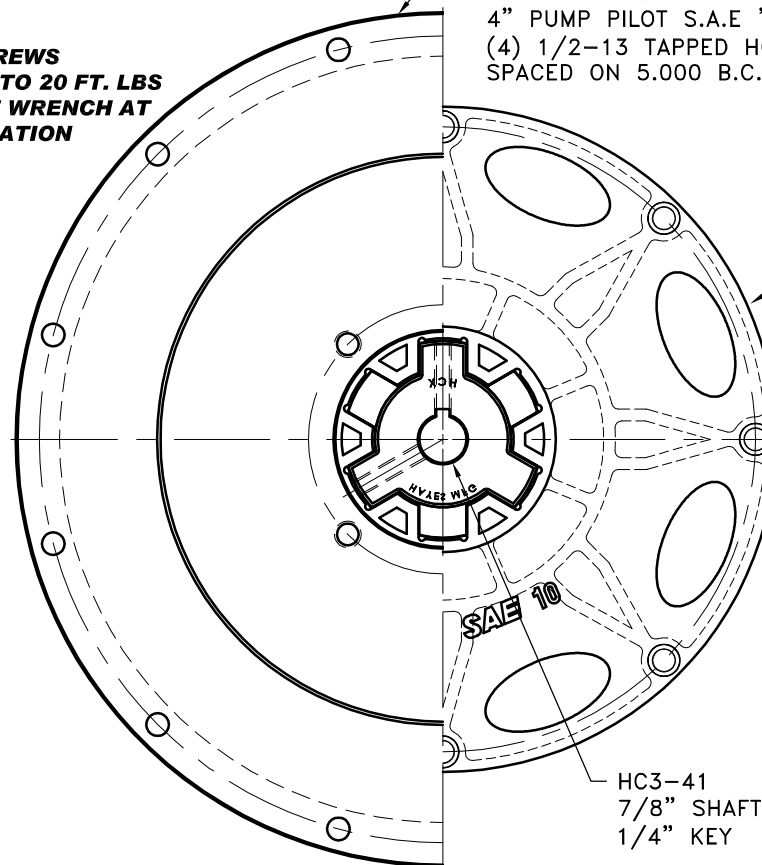


REV	DATE	CHANGE DESCRIPTION	MOD.BY	CK1	CK2

# **HAYES HEX~FLX ASSEMBLY NOTE:** **METAL HUB SHOULD BE FULLY ENGAGED** **INTO NYLON DRIVE PLATE.**



PT# 123008-E04  
S.A.E HOUSING MOUNT 27/64 DRILL THRU  
12 HOLES EQUALLY SPACED ON 15.00 B.C.  
4" PUMP PILOT S.A.E "B" PUMP MOUNT.  
(4) 1/2-13 TAPPED HOLES EQUALLY  
SPACED ON 5.000 B.C.



## **IMPORTANT INSTALLATION** **NOTE!!!!**

IMPROPER INSTALLATION OF HUB COULD CAUSE  
PREMATURE WEAR AND OR FAILURE.

IF YOU HAVE QUESTIONS CONCERNING LOCATION  
OF METAL HUB ON PUMP SHAFT PLEASE CONTACT  
DISTRIBUTOR OR FACTORY FOR FURTHER  
INFORMATION.

**BOTH HUB SET SCREWS MUST BE PROPERLY**  
**TORQUED TO 25 FT.LBS. USING TORQUE WRENCH .**  
**PLEASE CONTACT DISTRIBUTOR OR FACTORY FOR**  
**ANY FURTHER QUESTIONS.**

**C SERIES TORQUE RANGE**  
**65-175 HP**

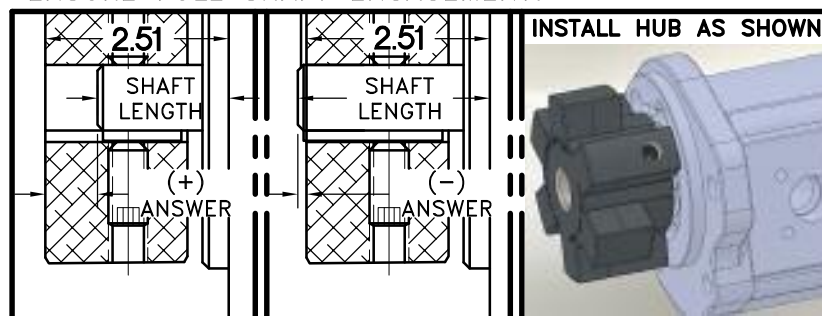
NOTE: REMOVE HUB FROM ASS'Y, PRESET HUB ON SHAFT  
AS SHOWN. **TORQUE BOTH SET SCREWS TO 25 FT.LBS.**  
**USING TORQUE WRENCH.** SHAFT SHOULD HAVE A  
MINIMUM OF 3/4" OF ENGAGEMENT IF NOT CONTACT  
FACTORY FOR RECOMMENDATIONS (231) 879-3372 TO  
GET HUB PRESET USE THIS EQUATION:

## **PERFORM CALCULATION BELOW:**

**2.51 - SHAFT LENGTH - HUB PRESET**

IF YOUR ANSWER IS (+) SHAFT IS INSIDE OF HUB, IF  
YOUR ANSWER IS (-) SHAFT STICKS OUT OF HUB.  
(SEE BOXES)

NOTE: THIS STEP IS IMPORTANT TO  
ENSURE FULL SHAFT ENGAGEMENT.



THIS DRAWING IS THE PROPERTY OF HAYES MFG. INC. AND IS LOANED  
SUBJECT TO THE CONDITION THAT IT SHALL NOT BE REPRODUCED,  
COPIED, LOANED OR OTHERWISE DISPOSED OF, DIRECTLY OR INDIRECTLY.  
IT SHALL BE USED AS A MEANS OF REFERENCE TO WORK FURNISHED BY  
THIS COMPANY ONLY AND IS NOT TO BE SUBMITTED TO OUTSIDE PARTIES  
FOR EXAMINATION WITHOUT OUR CONSENT.

3	123008-E04	PUMP MOUNT PLTE	1
2	HC3-41	C SERIES HEX~FLX HUB	1
1	C-010	SAE 10 HEX~FLX DRIVE PLATE	1

DET.	PART NUMBER	DESCRIPTION	QTY.

SYMBOLS FLATNESS STRAIGHTNESS ANGULARITY PERPENDICULARITY PARALLELISM CONCENTRICITY TRUE POSITION ROUNDNESS CIRCULAR RUN OUT TOTAL RUN OUT CYLINDRICITY FINISH	DO NOT SCALE DRAWING TOLERANCES UNLESS OTHERWISE SPECIFIED FRACTION MAXIMUM ANGLE ±1/2" FRACTION ±1/32 DECIMAL .00 ±.01 .000 ±.005 .0000 ±.0005	<b>HAYES</b> MANUFACTURING INC. ® TITLE HEX~FLX "C" SERIES 2 PIECE COUPLING MATERIAL
- UNLESS OTHERWISE SPECIFIED - REMOVE FIRST THREAD ON ALL TAPPED HOLES BREAK ALL SHARP CORNERS .010 TO .020 STAMP OR MARK DRAWING NO.	DRAWN BY SIETING CHECKED BY RJH	DATE 09-03-08 SCALE DRAWING NO. C-010-HC3-41-E04 SHEET OF REV.