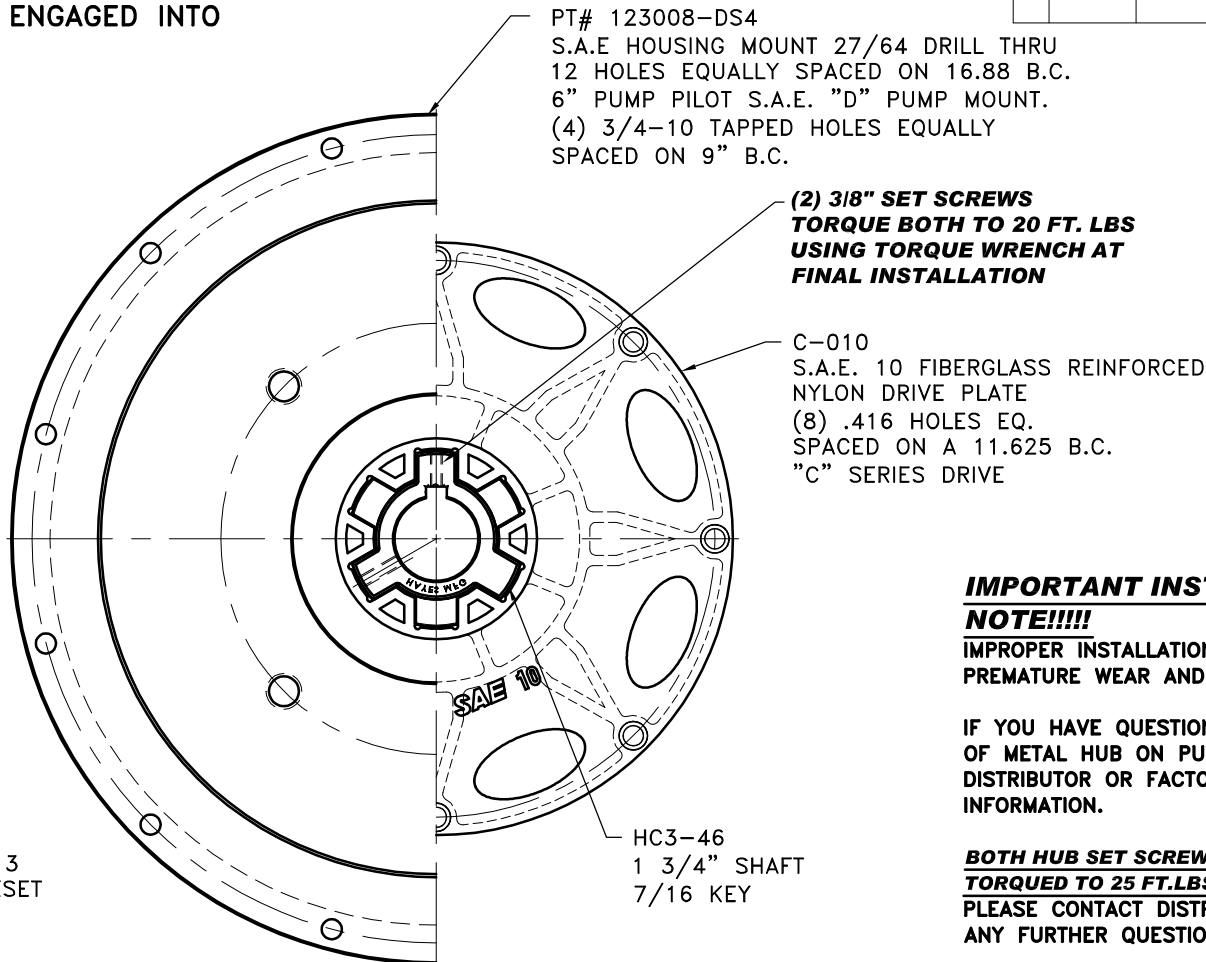
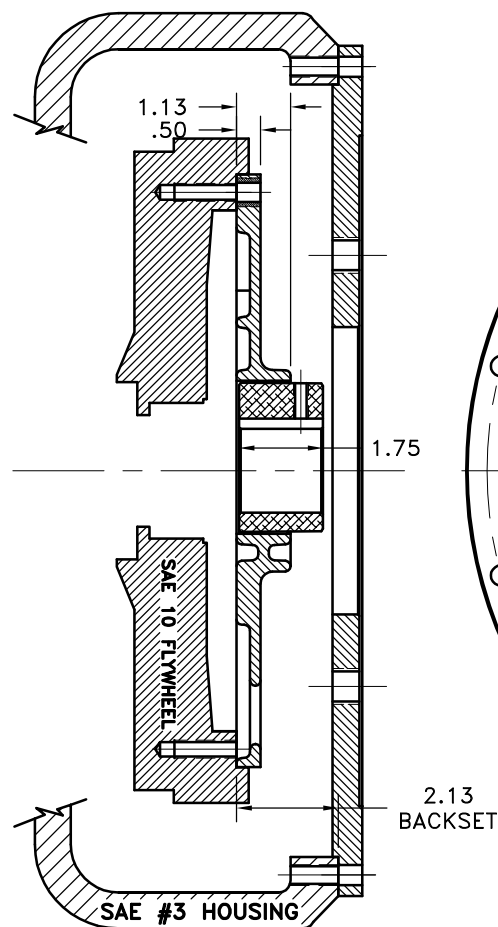


HAYES HEX~FLX ASSEMBLY NOTE: **METAL HUB SHOULD BE FULLY ENGAGED INTO** **NYLON DRIVE PLATE.**



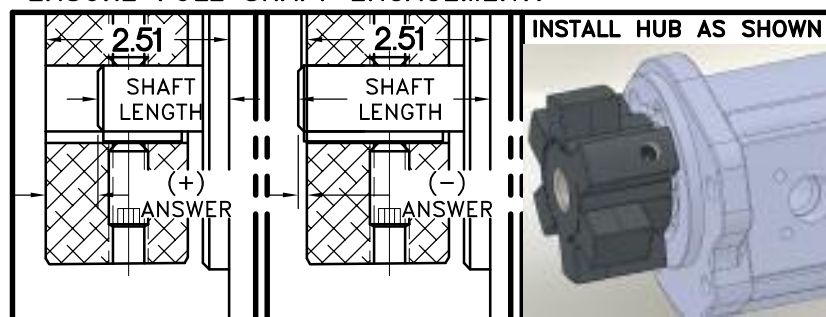
IMPORTANT INSTALLATION **NOTE!!!!**

IMPROPER INSTALLATION OF HUB COULD CAUSE
 PREMATURE WEAR AND OR FAILURE.

IF YOU HAVE QUESTIONS CONCERNING LOCATION
 OF METAL HUB ON PUMP SHAFT PLEASE CONTACT
 DISTRIBUTOR OR FACTORY FOR FURTHER
 INFORMATION.

BOTH HUB SET SCREWS MUST BE PROPERLY
TORQUED TO 25 FT.LBS. USING TORQUE WRENCH .
 PLEASE CONTACT DISTRIBUTOR OR FACTORY FOR
 ANY FURTHER QUESTIONS.

NOTE: THIS STEP IS IMPORTANT TO
ENSURE FULL SHAFT ENGAGEMENT.



"C" SERIES TORQUE RANGE
65-175 HP

3	123008-DS4	PUMP MOUNT PLTE	1
2	HC3-46	C SERIES HEX~FLX HUB	1
1	C-010	SAE 10 HEX~FLX DRIVE PLATE	1

SYMBOLS	DET.	PART NUMBER	DESCRIPTION	QTY.
FLATNESS STRAIGHTNESS ANGULARITY PERPENDICULARITY PARALLELISM CONCENTRICITY TRUE POSITION ROUNDNESS CIRCULAR RUN OUT TOTAL RUN OUT CYLINDRICITY FINISH	DO NOT SCALE DRAWING TOLERANCES UNLESS OTHERWISE SPECIFIED .125 MAXIMUM ANGLE ±1/2° FRACTION ±1/32 DECIMAL .00 ±.01 .000 ±.005 .0000 ±.0005		HAYES MANUFACTURING INC. ® TITLE HEX~FLX "C" SERIES 2 PIECE COUPLING MATERIAL	
- UNLESS OTHERWISE SPECIFIED - REMOVE FIRST THREAD ON ALL TAPPED HOLES BREAK ALL SHARP CORNERS .010 TO .020 STAMP OR MARK DRAWING NO.	DRAWN BY SIETING CHECKED BY RJH	DATE 03-19-08 SCALE	DRAWING NO. C-010-HC3-46-DS4 SHEET OF REV.	

NOTE: REMOVE HUB FROM ASS'Y, PRESET HUB ON SHAFT
 AS SHOWN. **TORQUE BOTH SET SCREWS TO 25 FT.LBS.**
USING TORQUE WRENCH. SHAFT SHOULD HAVE A
 MINIMUM OF 3/4" OF ENGAGEMENT IF NOT CONTACT
 FACTORY FOR RECOMMENDATIONS (231) 879-3372 TO
 GET HUB PRESET USE THIS EQUATION:

PERFORM CALCULATION BELOW:

2.51 - SHAFT LENGTH = HUB PRESET

IF YOUR ANSWER IS (+) SHAFT IS INSIDE OF HUB, IF
 YOUR ANSWER IS (-) SHAFT STICKS OUT OF HUB.
 (SEE BOXES)

THIS DRAWING IS THE PROPERTY OF HAYES MFG. INC. AND IS LOANED
 SUBJECT TO THE CONDITION THAT IT SHALL NOT BE REPRODUCED,
 COPIED, LOANED OR OTHERWISE DISPOSED OF, DIRECTLY OR INDIRECTLY.
 IT SHALL BE USED AS A MEANS OF REFERENCE TO WORK FURNISHED BY
 THIS COMPANY ONLY AND IS NOT TO BE SUBMITTED TO OUTSIDE PARTIES
 FOR EXAMINATION WITHOUT OUR CONSENT.