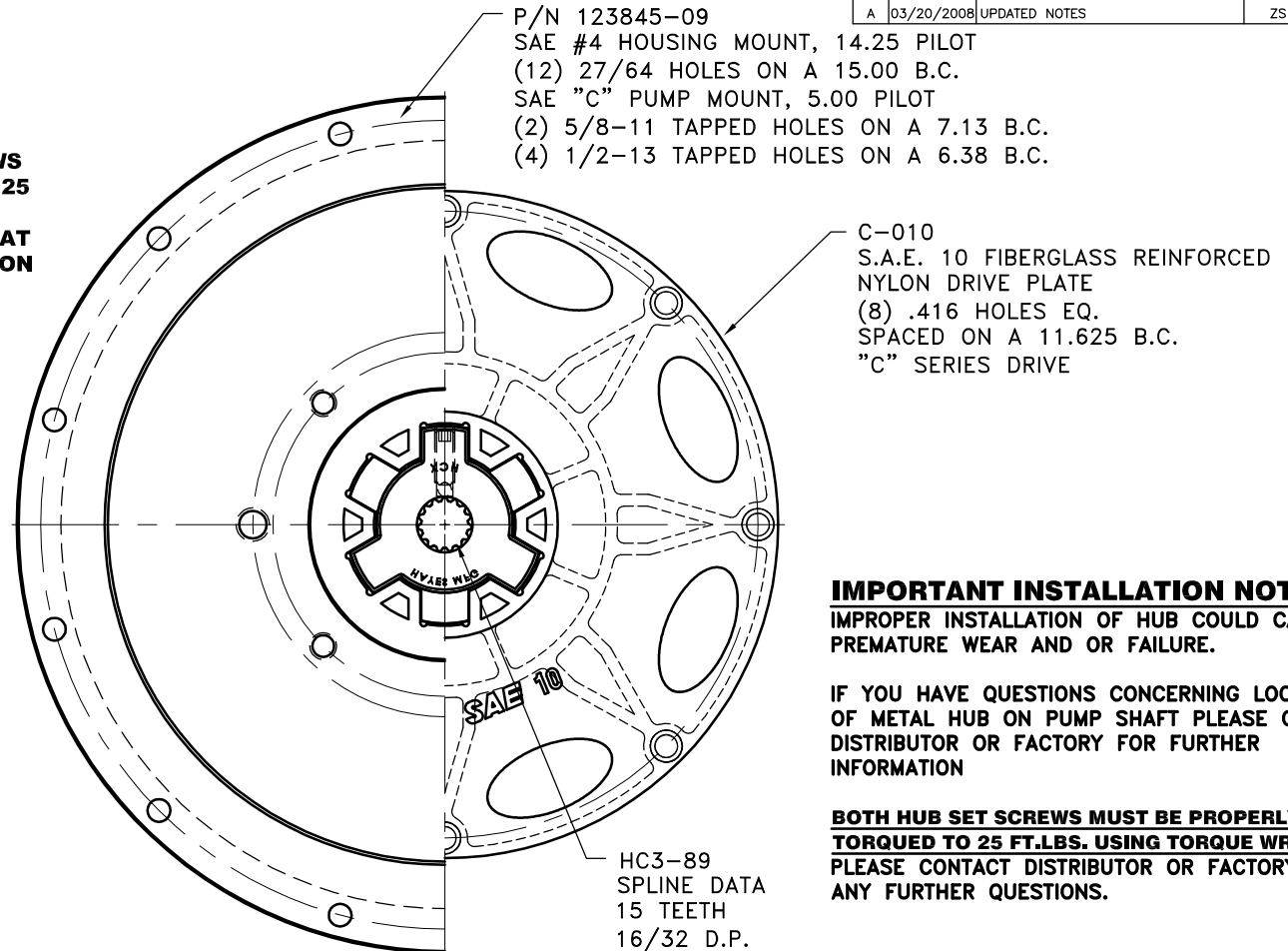
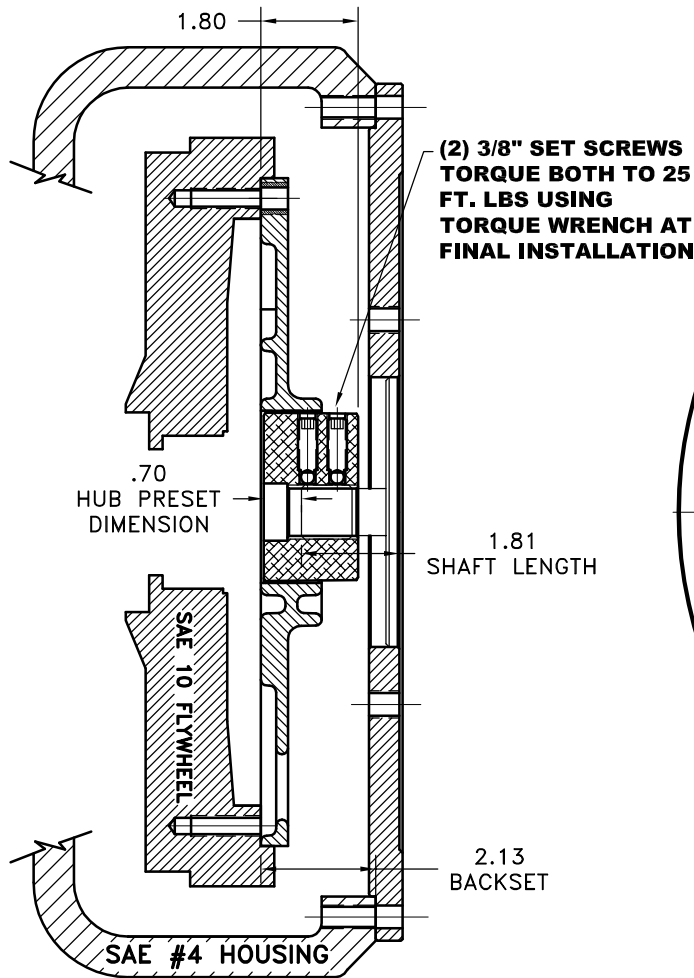


| REV | DATE | CHANGE DESCRIPTION | MOD.BY | CK1 | CK2 |
|-----|------------|--------------------|--------|-----|-----|
| A | 03/20/2008 | UPDATED NOTES | ZS | RJH | HM |



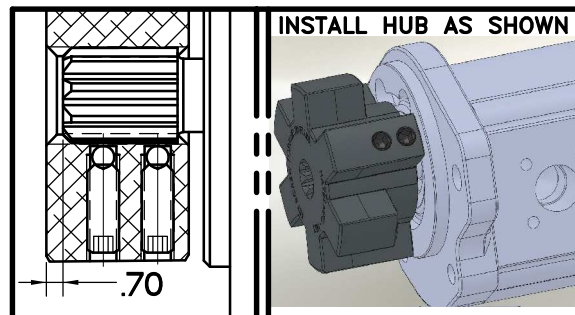
IMPORTANT INSTALLATION NOTE!!!!
IMPROPER INSTALLATION OF HUB COULD CAUSE
PREMATURE WEAR AND OR FAILURE.

IF YOU HAVE QUESTIONS CONCERNING LOCATION
OF METAL HUB ON PUMP SHAFT PLEASE CONTACT
DISTRIBUTOR OR FACTORY FOR FURTHER
INFORMATION

**BOTH HUB SET SCREWS MUST BE PROPERLY
TORQUED TO 25 FT.LBS. USING TORQUE WRENCH.**
PLEASE CONTACT DISTRIBUTOR OR FACTORY FOR
ANY FURTHER QUESTIONS.

**NOTE: THIS STEP IS IMPORTANT TO
ENSURE FULL SPLINE ENGAGEMENT.**

- 1) PRESET HUB ON SHAFT AS SHOWN.
- 2) IF YOUR PUMP SHAFT VARIES FROM THE DRAWN
SHAFT LENGTH, CONTACT FACTORY FOR
RECOMMENDATIONS.
- 3) **TORQUE BOTH SET SCREWS TO 25 FT.LBS. USING
TORQUE WRENCH.**
- 4) SHAFT SHOULD HAVE FULL SPLINE ENGAGEMENT INTO
HUB, IF NOT CONTACT FACTORY FOR
RECOMMENDATIONS (231) 879-3372.



SET HUB AS SHOWN

THIS DRAWING IS THE PROPERTY OF HAYES MFG. INC. AND IS LOANED
SUBJECT TO THE CONDITION THAT IT SHALL NOT BE REPRODUCED,
COPIED, LOANED OR OTHERWISE DISPOSED OF, DIRECTLY OR INDIRECTLY.
IT SHALL BE USED AS A MEANS OF REFERENCE TO WORK FURNISHED BY
THIS COMPANY ONLY AND IS NOT TO BE SUBMITTED TO OUTSIDE PARTIES
FOR EXAMINATION WITHOUT OUR CONSENT.

**"C" SERIES TORQUE RANGE
65-175 HP**

| DET. | PART NUMBER | DESCRIPTION | QTY. |
|------|-------------|----------------------------|------|
| 3 | 123845-09 | PUMP MOUNT PLTE | 1 |
| 2 | HC3-89 | C SERIES HEX~FLX HUB | 1 |
| 1 | C-010 | SAE 10 HEX~FLX DRIVE PLATE | 1 |

| SYMBOLS | | DET. | | PART NUMBER | | DESCRIPTION | | QTY. | |
|-------------------------|--|--|--|--------------|--|------------------|--|-------------------|--|
| DO NOT SCALE DRAWING | | TOLERANCES UNLESS OTHERWISE SPECIFIED | | 125° MAXIMUM | | ANGLE ±1/2° | | FRACTION ±1/32 | |
| FLATNESS | | STRAIGHTNESS | | ANGULARITY | | PERPENDICULARITY | | PARALLELISM | |
| CONCENTRICITY | | TRUE POSITION | | ROUNDNESS | | CIRCULAR RUN OUT | | TOTAL RUN OUT | |
| CYLINDRICITY | | FINISH | | .000 ±.005 | | .0000 ±.0005 | | | |
| CLASS | | MAKE: <input type="checkbox"/> BUY: <input type="checkbox"/> | | DRAWN BY | | DATE | | DRAWING NO. | |
| DESCRIPTION | | SIETING | | CHECKED BY | | SCALE | | C-010-HC3-89-EX24 | |
| | | RJH | | | | | | SHEET OF REV. | |

HAYES
MANUFACTURING INC. ®

TITLE
HEX~FLX "C" SERIES 2 PIECE COUPLING

MATERIAL