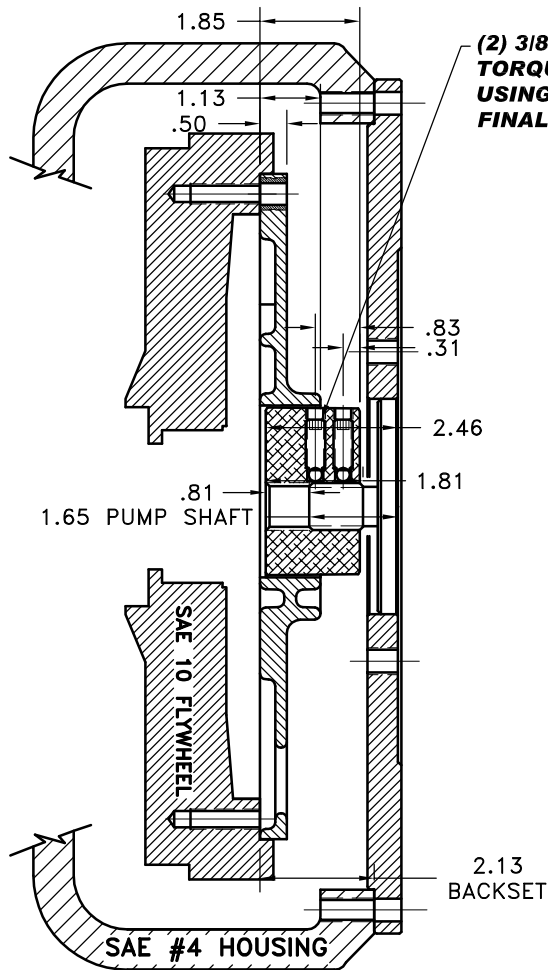
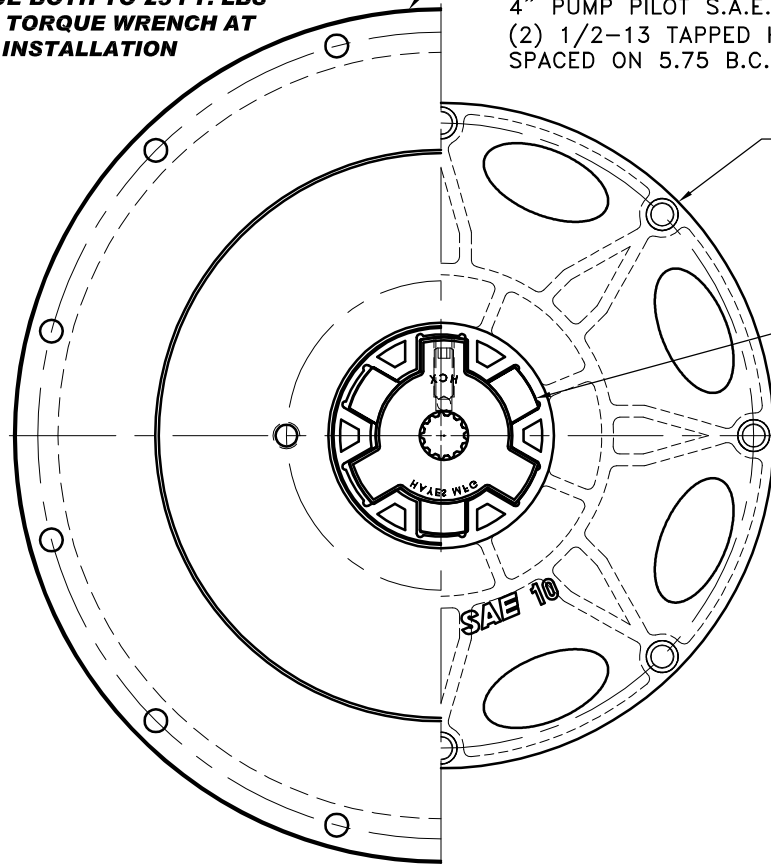


REV	DATE	CHANGE DESCRIPTION	MOD.BY	CK1	CK2
A	01/21/2008	UPDATED NOTES	ZS	CH	JM



(2) 3/8" SET SCREWS
TORQUE BOTH TO 25 FT. LBS
USING TORQUE WRENCH AT
FINAL INSTALLATION

PT# 123008-E02
S.A.E. HOUSING MOUNT 27/64 DRILL THRU
12 HOLES EQUALLY SPACED ON 15.00 B.C.
4" PUMP PILOT S.A.E. "B" PUMP MOUNT.
(2) 1/2-13 TAPPED HOLES EQUALLY
SPACED ON 5.75 B.C.



C-010
S.A.E. 10 FIBERGLASS REINFORCED
NYLON DRIVE PLATE
(8) .416 HOLES EQ.
SPACED ON A 11.625 B.C.
"C" SERIES DRIVE

HC3-91
SPLINE DATA
13 TEETH
16/32 D.P.
30° P.A.
.885 MAJOR
SAE "B"

**IMPORTANT INSTALLATION
NOTE!!!!**

IMPROPER INSTALLATION OF HUB COULD CAUSE
PREMATURE WEAR AND OR FAILURE.

IF YOU HAVE QUESTIONS CONCERNING LOCATION
OF METAL HUB ON PUMP SHAFT PLEASE CONTACT
DISTRIBUTOR OR FACTORY FOR FURTHER
INFORMATION.

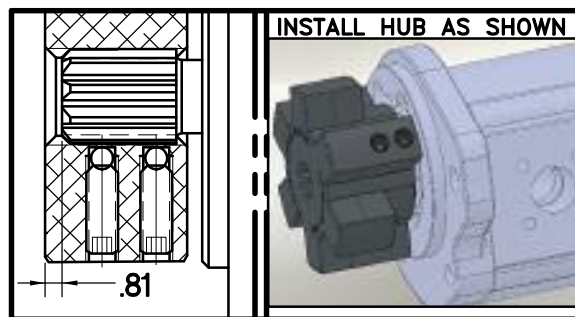
**BOTH HUB SET SCREWS MUST BE PROPERLY
TORQUED TO 25 FT.LBS. USING TORQUE WRENCH .**
PLEASE CONTACT DISTRIBUTOR OR FACTORY FOR
ANY FURTHER QUESTIONS.

**"C" SERIES TORQUE RANGE
65-175 HP**

**NOTE: THIS STEP IS IMPORTANT TO
ENSURE FULL SPLINE ENGAGEMENT.**

- 1) PRESET HUB ON SHAFT AS SHOWN.
- 2) IF YOUR PUMP SHAFT VARIES FROM THE DRAWN
SHAFT LENGTH, CONTACT FACTORY FOR
RECOMMENDATIONS.
- 3) **TORQUE BOTH SET SCREWS TO 25 FT.LBS. USING
TORQUE WRENCH.**
- 4) SHAFT SHOULD HAVE FULL SPLINE ENGAGEMENT INTO
HUB, IF NOT CONTACT FACTORY FOR
RECOMMENDATIONS (231) 879-3372.

THIS DRAWING IS THE PROPERTY OF HAYES MFG. INC. AND IS LOANED
SUBJECT TO THE CONDITION THAT IT SHALL NOT BE REPRODUCED,
COPIED, LOANED OR OTHERWISE DISPOSED OF, DIRECTLY OR INDIRECTLY.
IT SHALL BE USED AS A MEANS OF REFERENCE TO WORK FURNISHED BY
THIS COMPANY ONLY AND IS NOT TO BE SUBMITTED TO OUTSIDE PARTIES
FOR EXAMINATION WITHOUT OUR CONSENT.



SET HUB AS SHOWN

REV	DATE	CHANGE DESCRIPTION	MOD.BY	CK1	CK2
3		123008-E02 PUMP MOUNT PLATE			1
2		HC3-91 C SERIES HEX~FLX HUB			1
1		C-010 SAE 10 HEX~FLX DRIVE PLATE			1

SYMBOLS	DET.	PART NUMBER	DESCRIPTION	QTY.
□ FLATNESS — STRAIGHTNESS ∠ ANGULARITY ⊥ PERPENDICULARITY ∥ PARALLELISM ⊙ CONCENTRICITY ⊕ TRUE POSITION ○ ROUNDNESS ⊖ CIRCULAR RUN OUT ⊘ TOTAL RUN OUT Ⓢ CYLINDRICITY Ⓣ FINISH	DO NOT SCALE DRAWING TOLERANCES UNLESS OTHERWISE SPECIFIED .125 MAXIMUM ANGLE ±1/2° FRACTION ±1/32 DECIMAL .00 ±.01 .000 ±.005 .0000 ±.0005			
TITLE HEX~FLX "C" SERIES 2 PIECE COUPLING				
MATERIAL				
— UNLESS OTHERWISE SPECIFIED — REMOVE FIRST THREAD ON ALL TAPPED HOLES BREAK ALL SHARP CORNERS .010 TO .020 STAMP OR MARK DRAWING NO.		DRAWN BY SIETING	DATE 08-08-07	DRAWING NO. C-010-HC3-91-E02
		CHECKED BY RJH	SCALE	SHEET OF REV. HC3-91 REV.