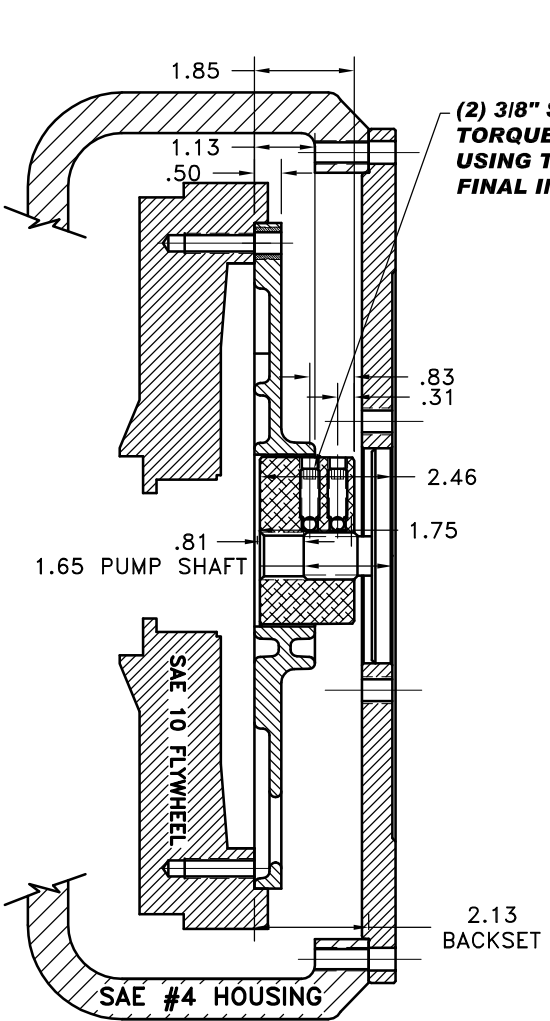
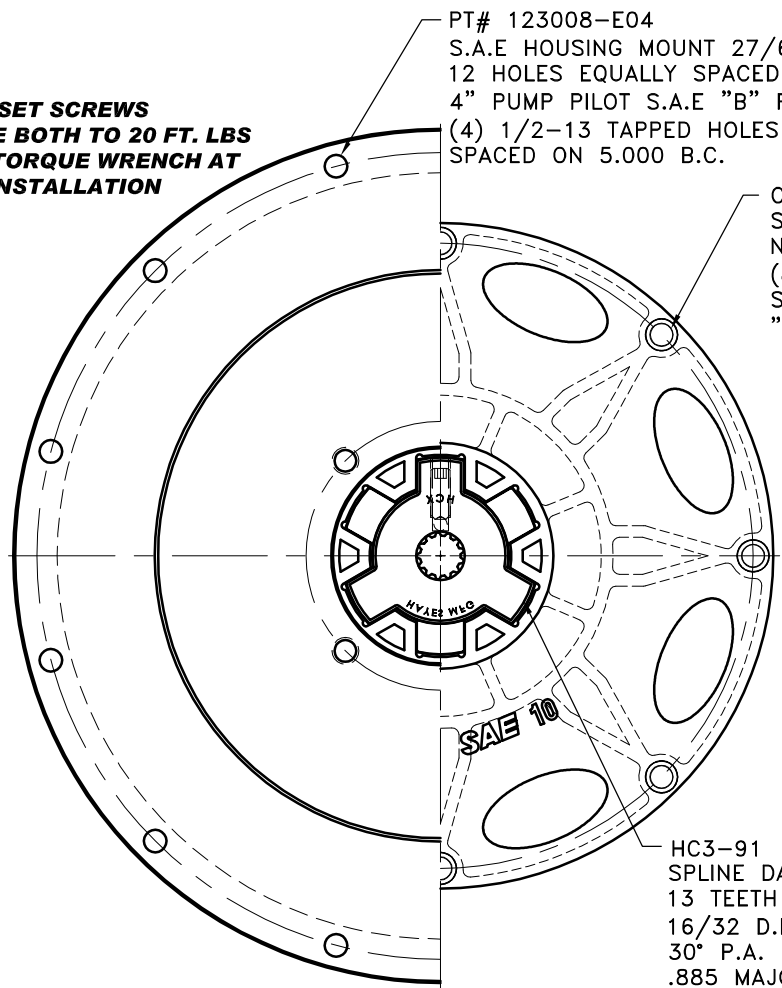


REV	DATE	CHANGE DESCRIPTION	MOD.BY	CK1	CK2
A	01/21/2008	UPDATED NOTES.	ZS		



**(2) 3/8" SET SCREWS
TORQUE BOTH TO 20 FT. LBS
USING TORQUE WRENCH AT
FINAL INSTALLATION**



PT# 123008-E04
S.A.E HOUSING MOUNT 27/64 DRILL THRU
12 HOLES EQUALLY SPACED ON 15.00 B.C.
4" PUMP PILOT S.A.E "B" PUMP MOUNT.
(4) 1/2-13 TAPPED HOLES EQUALLY
SPACED ON 5.000 B.C.

C-010
S.A.E. 10 FIBERGLASS REINFORCED
NYLON DRIVE PLATE
(8) .416 HOLES EQ.
SPACED ON A 11.625 B.C.
"C" SERIES DRIVE

**IMPORTANT INSTALLATION
NOTE!!!!**

IMPROPER INSTALLATION OF HUB COULD CAUSE
PREMATURE WEAR AND OR FAILURE.

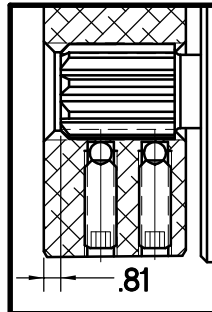
IF YOU HAVE QUESTIONS CONCERNING LOCATION
OF METAL HUB ON PUMP SHAFT PLEASE CONTACT
DISTRIBUTOR OR FACTORY FOR FURTHER
INFORMATION.

**BOTH HUB SET SCREWS MUST BE PROPERLY
TORQUED TO 25 FT.LBS. USING TORQUE WRENCH .
PLEASE CONTACT DISTRIBUTOR OR FACTORY FOR
ANY FURTHER QUESTIONS.**

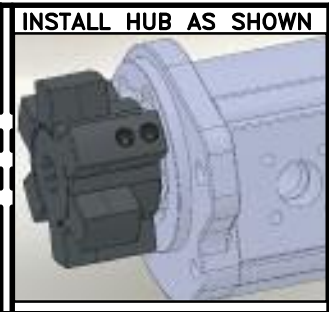
**NOTE: MUST ORDER PIECES
SEPARATLY BY PART
NUMBER.
"C" SERIES TORQUE RANGE
65-175 HP**

**NOTE: THIS STEP IS IMPORTANT TO
ENSURE FULL SPLINE ENGAGEMENT.**

- 1) PRESET HUB ON SHAFT AS SHOWN.
- 2) IF YOUR PUMP SHAFT VARIES FROM THE DRAWN
SHAFT LENGTH, CONTACT FACTORY FOR
RECOMMENDATIONS.
- 3) **TORQUE BOTH SET SCREWS TO 25 FT.LBS. USING
TORQUE WRENCH.**
- 4) SHAFT SHOULD HAVE FULL SPLINE ENGAGEMENT INTO
HUB, IF NOT CONTACT FACTORY FOR
RECOMMENDATIONS (231) 879-3372.



SET HUB AS SHOWN



INSTALL HUB AS SHOWN

THIS DRAWING IS THE PROPERTY OF HAYES MFG. INC. AND IS LOANED
SUBJECT TO THE CONDITION THAT IT SHALL NOT BE REPRODUCED,
COPIED, LOANED OR OTHERWISE DISPOSED OF, DIRECTLY OR INDIRECTLY.
IT SHALL BE USED AS A MEANS OF REFERENCE TO WORK FURNISHED BY
THIS COMPANY ONLY AND IS NOT TO BE SUBMITTED TO OUTSIDE PARTIES
FOR EXAMINATION WITHOUT OUR CONSENT.

DET.	PART NUMBER	DESCRIPTION	QTY.
3	123008-E04	PUMP MOUNT PLTE	1
2	HC3-91	C SERIES HEX~FLX HUB	1
1	C-010	SAE 10 HEX~FLX DRIVE PLATE	1

SYMBOLS		DET.	PART NUMBER	DESCRIPTION	QTY.
	FLATNESS	DO NOT SCALE DRAWING			
	STRAIGHTNESS	TOLERANCES UNLESS OTHERWISE SPECIFIED			
	ANGULARITY	FRACTION ±1/32			
	PERPENDICULARITY	DECIMAL			
	PARALLELISM	TOTAL RUN OUT			
	CONCENTRICITY	CYLINDRICITY			
	TRUE POSITION	FINISH			
	ROUNDNESS	- UNLESS OTHERWISE SPECIFIED -			
	CIRCULAR RUN OUT	REMOVE FIRST THREAD			
	TOTAL RUN OUT	ON ALL TAPPED HOLES			
	CYLINDRICITY	BREAK ALL SHARP CORNERS .010 TO .020			
	FINISH	STAMP OR MARK DRAWING NO.			
		DRAWN BY		DATE	DRAWING NO.
		SIETING		11-27-07	C-010-HC3-91-E04
		CHECKED BY		SCALE	SHEET OF REV.
		RJH			11 OF 11



**TITLE
HEX~FLX "C" SERIES 2 PIECE COUPLING**