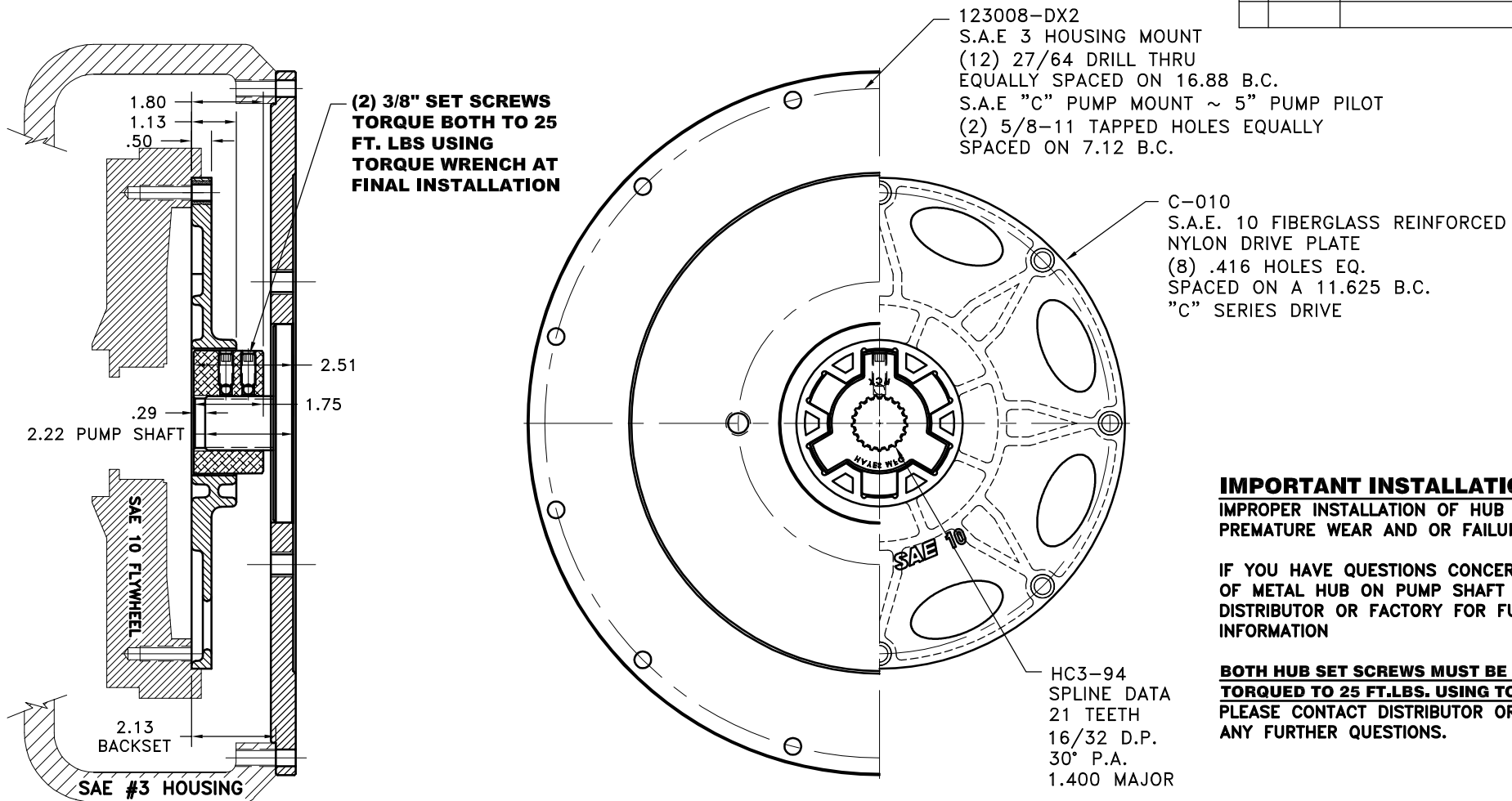


REV	DATE	CHANGE DESCRIPTION	MOD.BY	CK1	CK2



IMPORTANT INSTALLATION NOTE!!!!
 IMPROPER INSTALLATION OF HUB COULD CAUSE
 PREMATURE WEAR AND OR FAILURE.

IF YOU HAVE QUESTIONS CONCERNING LOCATION
 OF METAL HUB ON PUMP SHAFT PLEASE CONTACT
 DISTRIBUTOR OR FACTORY FOR FURTHER
 INFORMATION

**BOTH HUB SET SCREWS MUST BE PROPERLY
 TORQUED TO 25 FT.LBS. USING TORQUE WRENCH.**
 PLEASE CONTACT DISTRIBUTOR OR FACTORY FOR
 ANY FURTHER QUESTIONS.

"C" SERIES TORQUE RANGE 65-175 HP

3	123008-DX2	PUMP MOUNT PLATE	1
2	HC3-94	C SERIES HEX~FLX HUB	1
1	C-010	SAE 10 HEX~FLX DRIVE PLATE	1

SYMBOLS	DET.	PART NUMBER	DESCRIPTION	QTY.
FLATNESS STRAIGHTNESS ANGULARITY PERPENDICULARITY PARALLELISM CONCENTRICITY TRUE POSITION ROUNDNESS CIRCULAR RUN OUT TOTAL RUN OUT CYLINDRICITY FINISH	DO NOT SCALE DRAWING TOLERANCES UNLESS OTHERWISE SPECIFIED .125" MAXIMUM ANGLE ±1/2" FRACTION ±1/32 DECIMAL .00 ±.01 .000 ±.005 .0000 ±.0005	MAKE: <input type="checkbox"/> BUY: <input type="checkbox"/>	HAYES MANUFACTURING INC. ® TITLE HEX~FLX "C" SERIES 2 PIECE COUPLING MATERIAL	DRAWN BY SIETING DATE 11-03-2009 CHECKED BY RJH SCALE DRAWING NO. C-010-HC3-94-DX2 SHEET OF REV.

NOTE: THIS STEP IS IMPORTANT TO ENSURE FULL SPLINE ENGAGEMENT.

- 1) PRESET HUB ON SHAFT AS SHOWN.
- 2) IF YOUR PUMP SHAFT VARIES FROM THE DRAWN
 SHAFT LENGTH, CONTACT FACTORY FOR
 RECOMMENDATIONS.
- 3) **TORQUE BOTH SET SCREWS TO 25 FT.LBS. USING
 TORQUE WRENCH.**
- 4) SHAFT SHOULD HAVE FULL SPLINE ENGAGEMENT INTO
 HUB, IF NOT CONTACT FACTORY FOR
 RECOMMENDATIONS (231) 879-3372.

THIS DRAWING IS THE PROPERTY OF HAYES MFG. INC. AND IS LOANED
 SUBJECT TO THE CONDITION THAT IT SHALL NOT BE REPRODUCED,
 COPIED, LOANED OR OTHERWISE DISPOSED OF, DIRECTLY OR INDIRECTLY.
 IT SHALL BE USED AS A MEANS OF REFERENCE TO WORK FURNISHED BY
 THIS COMPANY ONLY AND IS NOT TO BE SUBMITTED TO OUTSIDE PARTIES
 FOR EXAMINATION WITHOUT OUR CONSENT.

