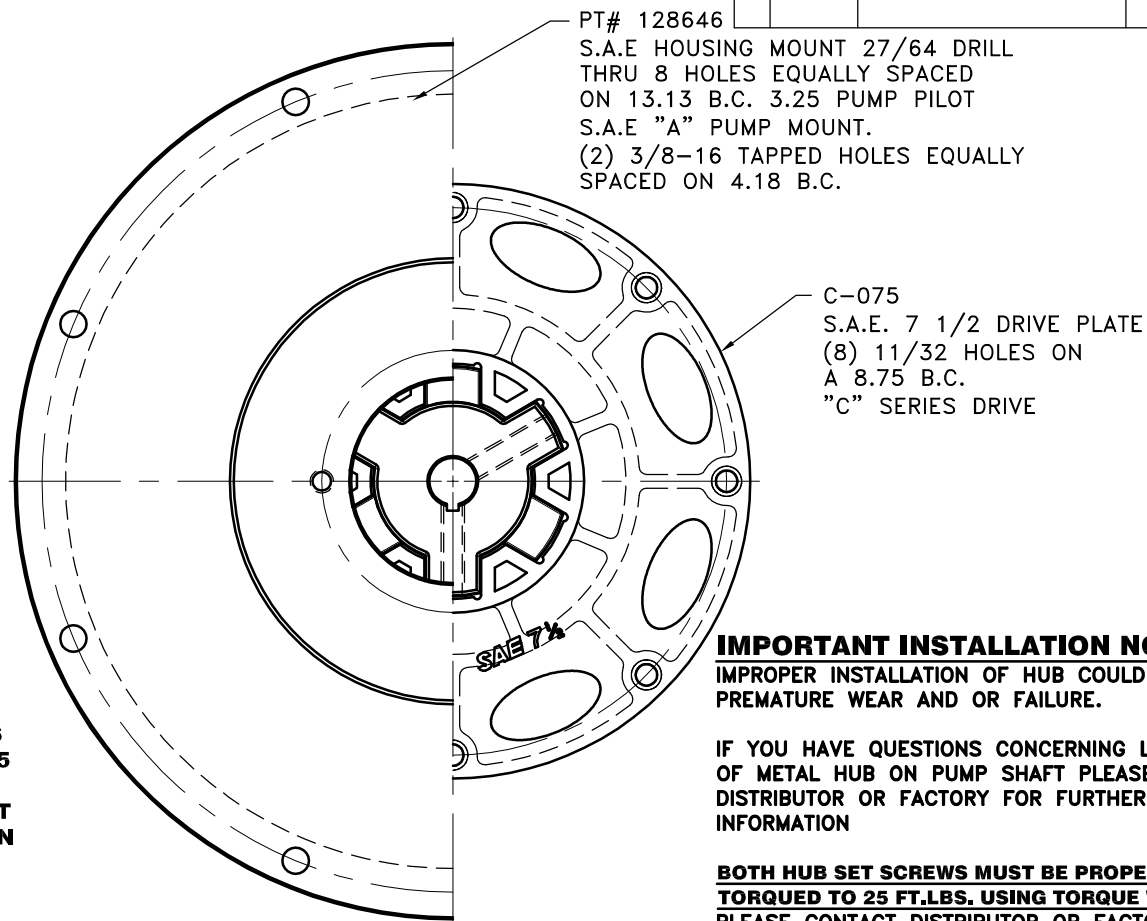
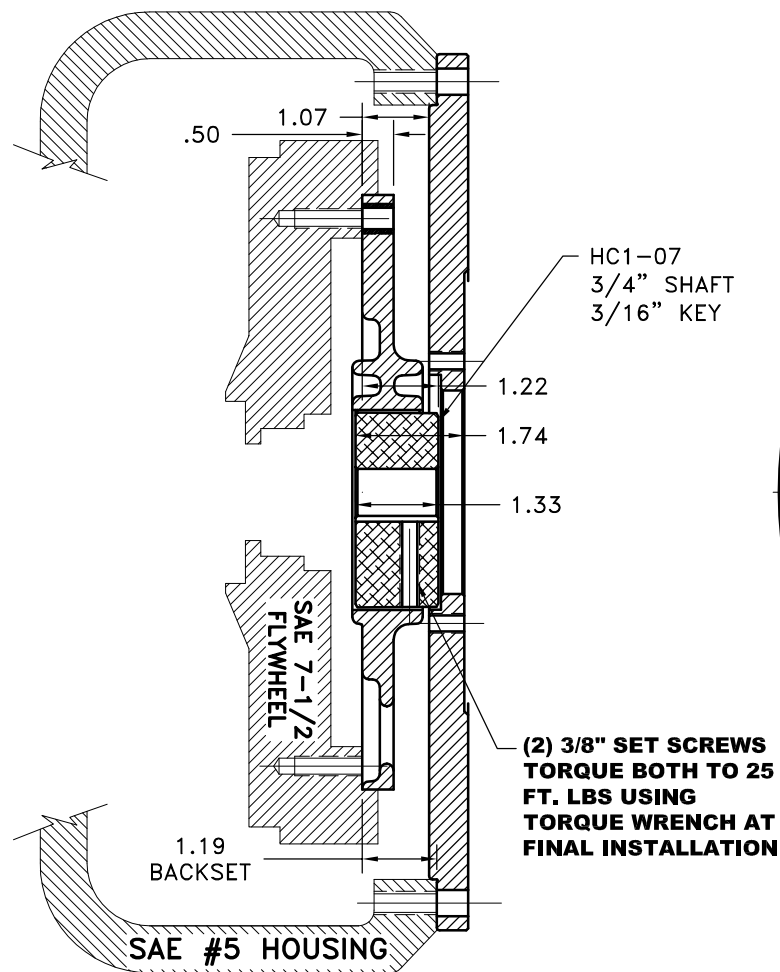


REV	DATE	CHANGE DESCRIPTION	MOD.BY	CK1	CK2



**IMPORTANT INSTALLATION NOTE!!!!**  
IMPROPER INSTALLATION OF HUB COULD CAUSE PREMATURE WEAR AND OR FAILURE.

IF YOU HAVE QUESTIONS CONCERNING LOCATION OF METAL HUB ON PUMP SHAFT PLEASE CONTACT DISTRIBUTOR OR FACTORY FOR FURTHER INFORMATION

**BOTH HUB SET SCREWS MUST BE PROPERLY TORQUED TO 25 FT.LBS. USING TORQUE WRENCH. PLEASE CONTACT DISTRIBUTOR OR FACTORY FOR ANY FURTHER QUESTIONS.**

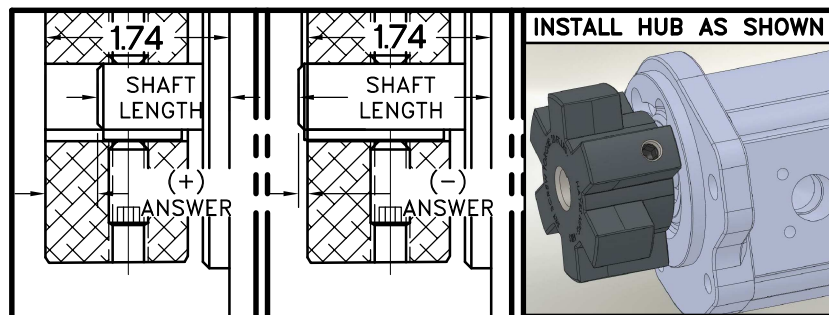
NOTE: REMOVE HUB FROM ASS'Y, PRESET HUB ON SHAFT AS SHOWN. **TORQUE BOTH SET SCREWS TO 25 FT.LBS. USING TORQUE WRENCH.** SHAFT SHOULD HAVE A MINIMUM OF 3/4" OF ENGAGEMENT IF NOT CONTACT FACTORY FOR RECOMMENDATIONS (231) 879-3372 TO GET HUB PRESET USE THIS EQUATION:

**PERFORM CALCULATION BELOW:**

**1.74 - SHAFT LENGTH - HUB PRESET**

IF YOUR ANSWER IS (+) SHAFT IS INSIDE OF HUB, IF YOUR ANSWER IS (-) SHAFT STICKS OUT OF HUB. (SEE BOXES)

NOTE: THIS STEP IS IMPORTANT TO ENSURE FULL SHAFT ENGAGEMENT.



**"C" SERIES TORQUE RANGE  
65-175 HP**

3	128646	PUMP MOUNT PLATE	1
2	HC1-07	C SERIES HEX~FLX HUB	1
1	C-075	SAE 7 1/2 HEX~FLX DRIVE PLATE	1

SYMBOLS	DET.	PART NUMBER	DESCRIPTION	QTY.
/ FLATNESS / STRAIGHTNESS / ANGULARITY / PERPENDICULARITY / PARALLELISM @ CONCENTRICITY / TRUE POSITION / ROUNDNESS / CIRCULAR RUN OUT / TOTAL RUN OUT / CYLINDRICITY / FINISH	DO NOT SCALE DRAWING TOLERANCES UNLESS OTHERWISE SPECIFIED .125" MAXIMUM ANGLE ±1/2" FRACTION ±1/32 DECIMAL .00 ±.01 .000 ±.005 .0000 ±.0005	MAKE: <input type="checkbox"/> BUY: <input type="checkbox"/>	<b>HAYES</b> MANUFACTURING INC. ® TITLE HEX~FLX COUPLING ASS'Y MATERIAL	
CLASS	DESCRIPTION	DRAWN BY SIETING	DATE 10-05-2009	DRAWING NO. C-075-HC1-07-GSP2
		CHECKED BY RJH	SCALE	SHEET OF REV.

THIS DRAWING IS THE PROPERTY OF HAYES MFG. INC. AND IS LOANED SUBJECT TO THE CONDITION THAT IT SHALL NOT BE REPRODUCED, COPIED, LOANED OR OTHERWISE DISPOSED OF, DIRECTLY OR INDIRECTLY. IT SHALL BE USED AS A MEANS OF REFERENCE TO WORK FURNISHED BY THIS COMPANY ONLY AND IS NOT TO BE SUBMITTED TO OUTSIDE PARTIES FOR EXAMINATION WITHOUT OUR CONSENT.