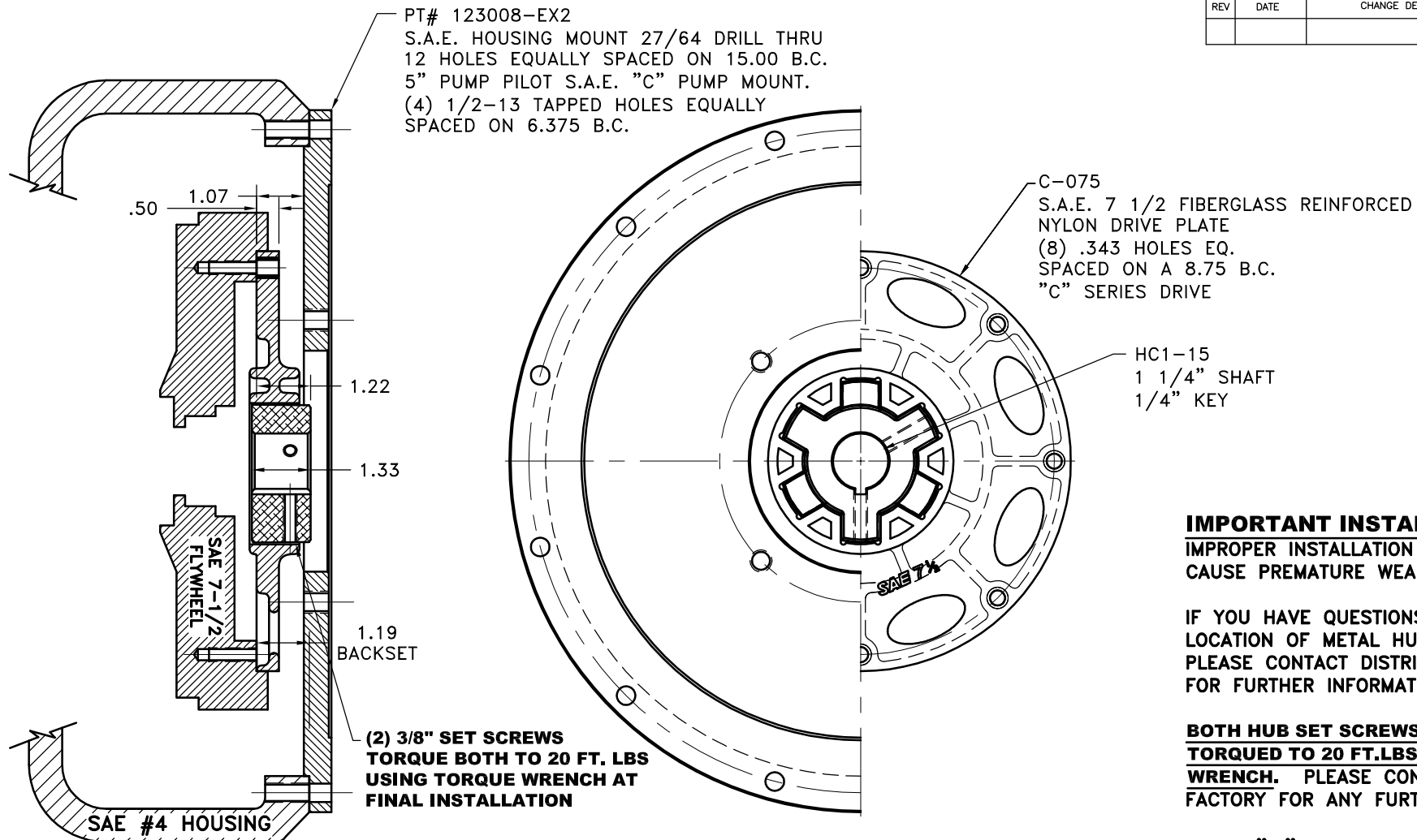


REV	DATE	CHANGE DESCRIPTION	MOD. BY	CK1	CK2



PT# 123008-EX2
S.A.E. HOUSING MOUNT 27/64 DRILL THRU
12 HOLES EQUALLY SPACED ON 15.00 B.C.
5\" PUMP PILOT S.A.E. \"C\" PUMP MOUNT.
(4) 1/2-13 TAPPED HOLES EQUALLY
SPACED ON 6.375 B.C.

C-075
S.A.E. 7 1/2 FIBERGLASS REINFORCED
NYLON DRIVE PLATE
(8) .343 HOLES EQ.
SPACED ON A 8.75 B.C.
\"C\" SERIES DRIVE

HC1-15
1 1/4\" SHAFT
1/4\" KEY

IMPORTANT INSTALLATION NOTE!!!!
IMPROPER INSTALLATION OF HUB COULD
CAUSE PREMATURE WEAR AND OR FAILURE.

IF YOU HAVE QUESTIONS CONCERNING
LOCATION OF METAL HUB ON PUMP SHAFT
PLEASE CONTACT DISTRIBUTOR OR FACTORY
FOR FURTHER INFORMATION.

**BOTH HUB SET SCREWS MUST BE PROPERLY
TORQUED TO 20 FT.LBS. USING TORQUE
WRENCH. PLEASE CONTACT DISTRIBUTOR OR
FACTORY FOR ANY FURTHER QUESTIONS.**

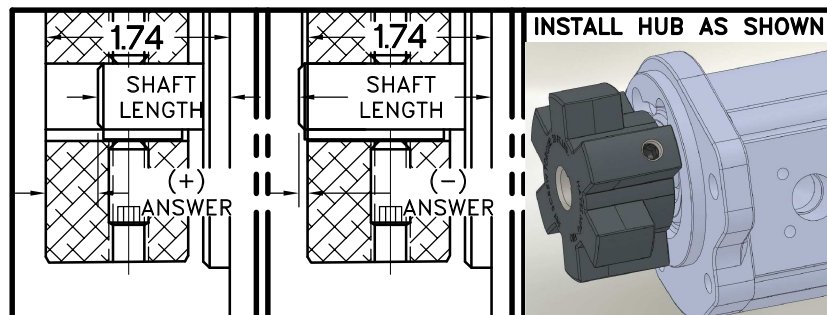
NOTE: REMOVE HUB FROM ASS'Y, PRESET HUB ON SHAFT
AS SHOWN. **TORQUE BOTH SET SCREWS TO 25 FT.LBS.
USING TORQUE WRENCH. SHAFT SHOULD HAVE A
MINIMUM OF 3/4\" OF ENGAGEMENT IF NOT CONTACT
FACTORY FOR RECOMMENDATIONS (231) 879-3372 TO
GET HUB PRESET USE THIS EQUATION:**

PERFORM CALCULATION BELOW:
1.74 - SHAFT LENGTH = HUB PRESET

IF YOUR ANSWER IS (+) SHAFT IS INSIDE OF HUB,
IF YOUR ANSWER IS (-) SHAFT STICKS OUT OF HUB.
(SEE BOXES)

THIS DRAWING IS THE PROPERTY OF HAYES MFG. INC. AND IS LOANED
SUBJECT TO THE CONDITION THAT IT SHALL NOT BE REPRODUCED,
COPIED, LOANED OR OTHERWISE DISPOSED OF, DIRECTLY OR INDIRECTLY.
IT SHALL BE USED AS A MEANS OF REFERENCE TO WORK FURNISHED BY
THIS COMPANY ONLY AND IS NOT TO BE SUBMITTED TO OUTSIDE PARTIES
FOR EXAMINATION WITHOUT OUR CONSENT.

**NOTE: THIS STEP IS IMPORTANT TO
ENSURE FULL SHAFT ENGAGEMENT.**



**\"C\" SERIES TORQUE RANGE
65-175 HP**

3	123008-EX2	PUMP MOUNT PLATE	1
2	HC1-15	C SERIES HEX~FLX HUB	1
1	C-075	SAE 7 1/2 HEX~FLX DRIVE PLATE	1

SYMBOLS	DET.	PART NUMBER	DESCRIPTION	QTY.
FLATNESS STRAIGHTNESS ANGULARITY PERPENDICULARITY PARALLELISM CONCENTRICITY TRUE POSITION ROUNDNESS CIRCULAR RUN OUT TOTAL RUN OUT CYLINDRICITY FINISH	DO NOT SCALE DRAWING TOLERANCES UNLESS OTHERWISE SPECIFIED .125\" MAXIMUM ANGLE ±1/2\" FRACTION ±1/32 DECIMAL .00 ±.01 .000 ±.005 .0000 ±.0005	MAKE: <input type="checkbox"/> BUY: <input type="checkbox"/>	HAYES MANUFACTURING INC. ® TITLE HEX~FLX COUPLING ASS'Y MATERIAL	
CLASS	DESCRIPTION	DRAWN BY SIETING CHECKED BY RJH	DATE 03-18-07 SCALE	DRAWING NO. C-075-HC1-15-EX2 SHEET OF REV.