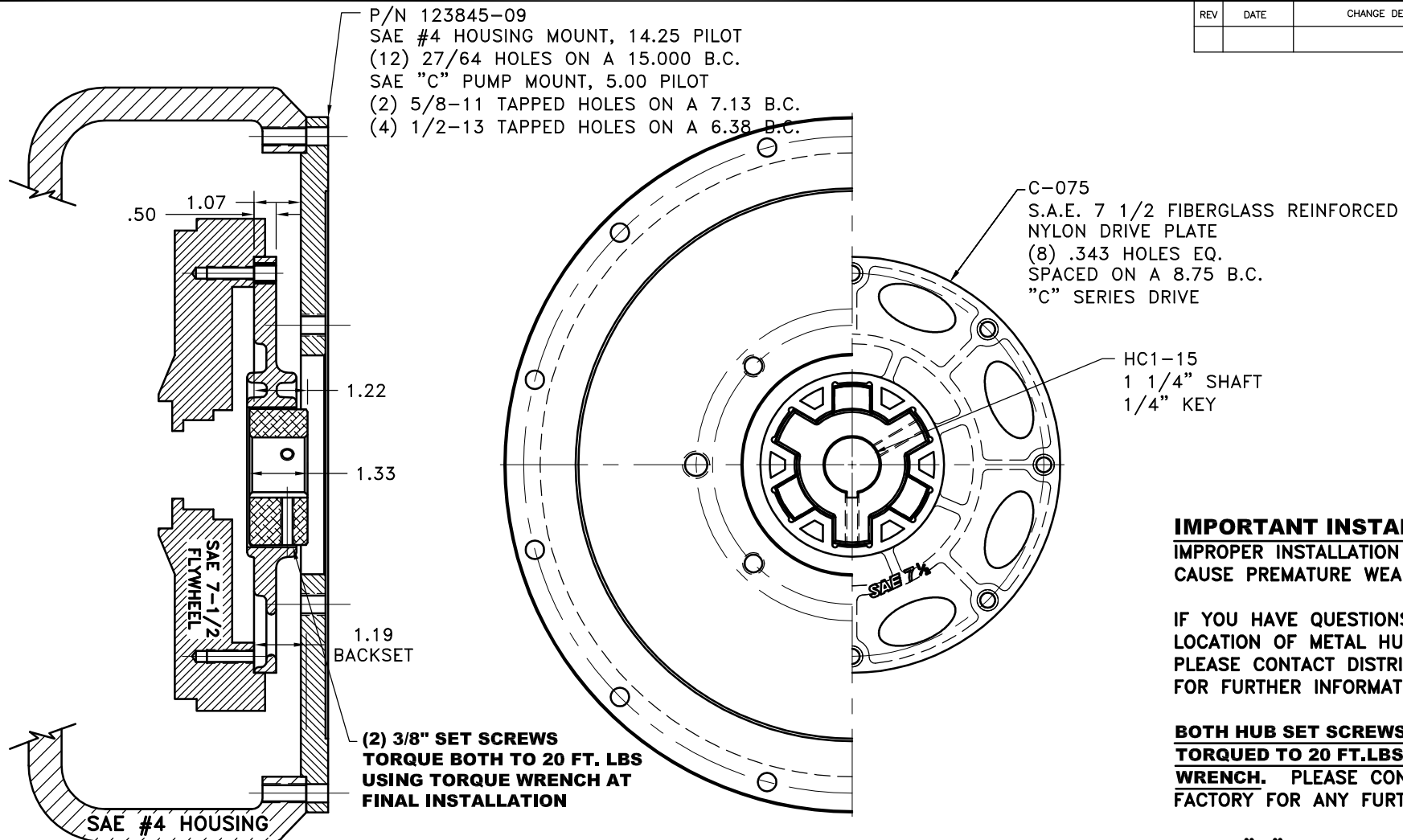


REV	DATE	CHANGE DESCRIPTION	MOD.BY	CK1	CK2



P/N 123845-09
 SAE #4 HOUSING MOUNT, 14.25 PILOT
 (12) 27/64 HOLES ON A 15.000 B.C.
 SAE "C" PUMP MOUNT, 5.00 PILOT
 (2) 5/8-11 TAPPED HOLES ON A 7.13 B.C.
 (4) 1/2-13 TAPPED HOLES ON A 6.38 B.C.

C-075
 S.A.E. 7 1/2 FIBERGLASS REINFORCED
 NYLON DRIVE PLATE
 (8) .343 HOLES EQ.
 SPACED ON A 8.75 B.C.
 "C" SERIES DRIVE

HC1-15
 1 1/4" SHAFT
 1/4" KEY

IMPORTANT INSTALLATION NOTE!!!!
 IMPROPER INSTALLATION OF HUB COULD
 CAUSE PREMATURE WEAR AND OR FAILURE.

IF YOU HAVE QUESTIONS CONCERNING
 LOCATION OF METAL HUB ON PUMP SHAFT
 PLEASE CONTACT DISTRIBUTOR OR FACTORY
 FOR FURTHER INFORMATION.

**BOTH HUB SET SCREWS MUST BE PROPERLY
 TORQUED TO 20 FT.LBS. USING TORQUE
 WRENCH. PLEASE CONTACT DISTRIBUTOR OR
 FACTORY FOR ANY FURTHER QUESTIONS.**

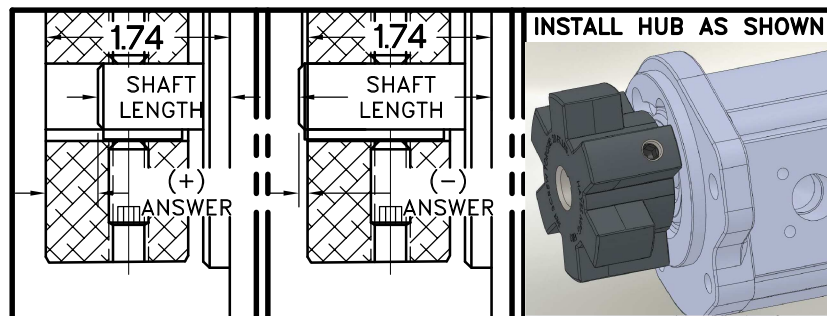
NOTE: REMOVE HUB FROM ASS'Y, PRESET HUB ON SHAFT
 AS SHOWN. **TORQUE BOTH SET SCREWS TO 25 FT.LBS.
 USING TORQUE WRENCH. SHAFT SHOULD HAVE A
 MINIMUM OF 3/4" OF ENGAGEMENT IF NOT CONTACT
 FACTORY FOR RECOMMENDATIONS (231) 879-3372 TO
 GET HUB PRESET USE THIS EQUATION:**

PERFORM CALCULATION BELOW:
1.74 - SHAFT LENGTH = HUB PRESET

IF YOUR ANSWER IS (+) SHAFT IS INSIDE OF HUB,
 IF YOUR ANSWER IS (-) SHAFT STICKS OUT OF HUB.
 (SEE BOXES)

THIS DRAWING IS THE PROPERTY OF HAYES MFG. INC. AND IS LOANED
 SUBJECT TO THE CONDITION THAT IT SHALL NOT BE REPRODUCED,
 COPIED, LOANED OR OTHERWISE DISPOSED OF, DIRECTLY OR INDIRECTLY.
 IT SHALL BE USED AS A MEANS OF REFERENCE TO WORK FURNISHED BY
 THIS COMPANY ONLY AND IS NOT TO BE SUBMITTED TO OUTSIDE PARTIES
 FOR EXAMINATION WITHOUT OUR CONSENT.

**NOTE: THIS STEP IS IMPORTANT TO
 ENSURE FULL SHAFT ENGAGEMENT.**



**"C" SERIES TORQUE RANGE
 65-175 HP**

3	123845-09	PUMP MOUNT PLATE	1
2	HC1-15	C SERIES HEX~FLX HUB	1
1	C-075	SAE 7 1/2 HEX~FLX DRIVE PLATE	1

SYMBOLS	DET.	PART NUMBER	DESCRIPTION	QTY.
DO NOT SCALE DRAWING TOLERANCES UNLESS OTHERWISE SPECIFIED 125 MAXIMUM ANGLE ±1/2" FRACTION ±1/32 DECIMAL .00 ±.01 .000 ±.005 .0000 ±.0005 FINISH				
CLASS SAE 7.5 DESCRIPTION 7-1/2,4,1-1/4x1/4,C24	MAKE: <input checked="" type="checkbox"/> BUY: <input type="checkbox"/>			
TITLE HEX~FLX COUPLING ASS'Y MATERIAL DRAWN BY SIETING CHECKED BY SCALE DATE 02-02-2015 DRAWING NO. C-075-HC1-15-EX24 SHEET OF REV.				

HAYES
 MANUFACTURING INC. ®

HEX~FLX COUPLING ASS'Y

MATERIAL

DRAWN BY

SIETING

CHECKED BY

SCALE

DATE

02-02-2015

DRAWING NO.

C-075-HC1-15-EX24

SHEET OF REV.