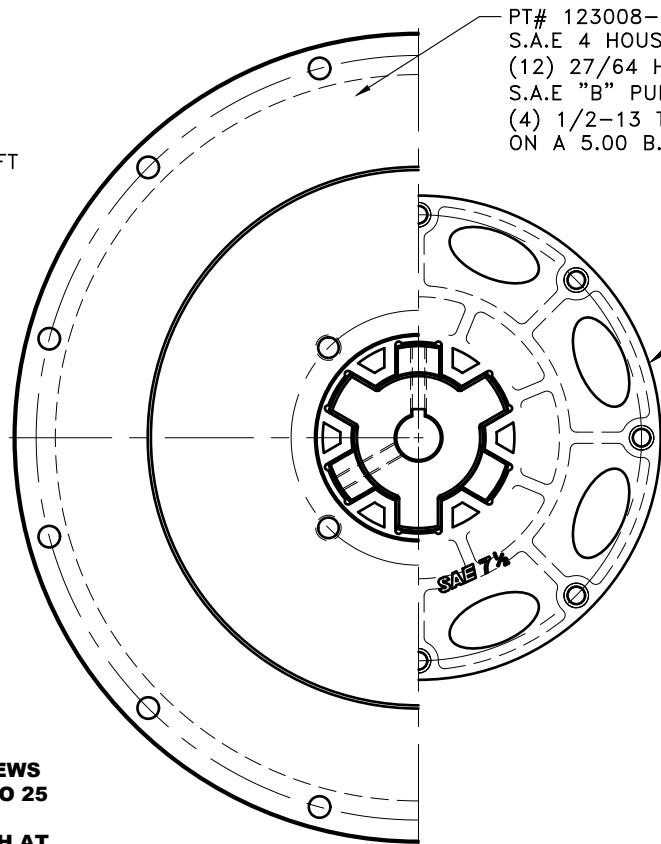
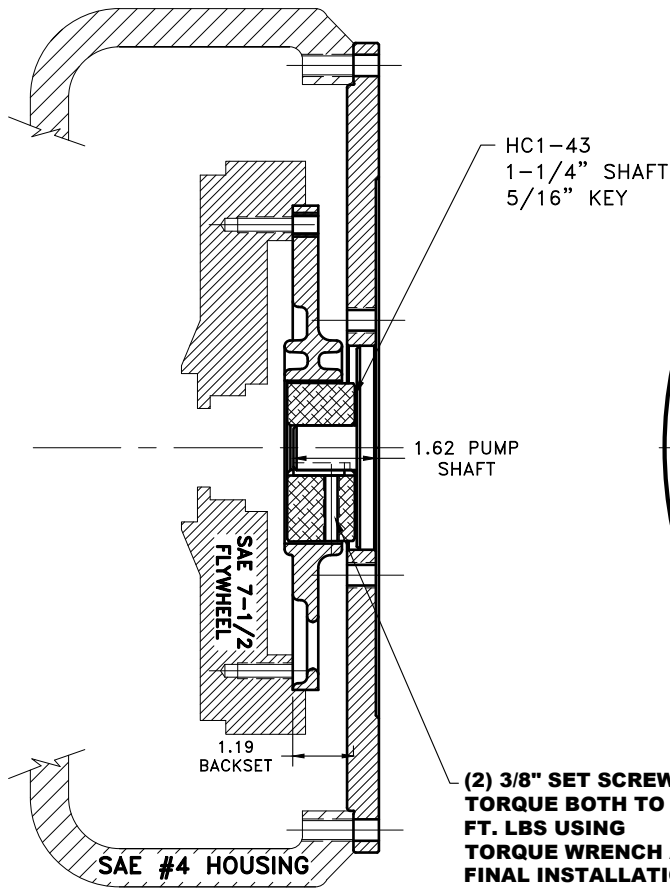


REV	DATE	CHANGE DESCRIPTION	MOD.BY	CK1	CK2



**(2) 3/8\" SET SCREWS  
TORQUE BOTH TO 25  
FT. LBS USING  
TORQUE WRENCH AT  
FINAL INSTALLATION**

**IMPORTANT INSTALLATION NOTE!!!!**  
IMPROPER INSTALLATION OF HUB COULD CAUSE  
PREMATURE WEAR AND OR FAILURE.

IF YOU HAVE QUESTIONS CONCERNING LOCATION  
OF METAL HUB ON PUMP SHAFT PLEASE CONTACT  
DISTRIBUTOR OR FACTORY FOR FURTHER  
INFORMATION

**BOTH HUB SET SCREWS MUST BE PROPERLY  
TORQUED TO 25 FT.LBS. USING TORQUE WRENCH.  
PLEASE CONTACT DISTRIBUTOR OR FACTORY FOR  
ANY FURTHER QUESTIONS.**

**\"C\" SERIES TORQUE RANGE  
65-175 HP**

NOTE: REMOVE HUB FROM ASS'Y, PRESET HUB ON SHAFT  
AS SHOWN. **TORQUE BOTH SET SCREWS TO 25 FT.LBS.  
USING TORQUE WRENCH.** SHAFT SHOULD HAVE A  
MINIMUM OF 3/4\" OF ENGAGEMENT IF NOT CONTACT  
FACTORY FOR RECOMMENDATIONS (231) 879-3372 TO  
GET HUB PRESET USE THIS EQUATION:

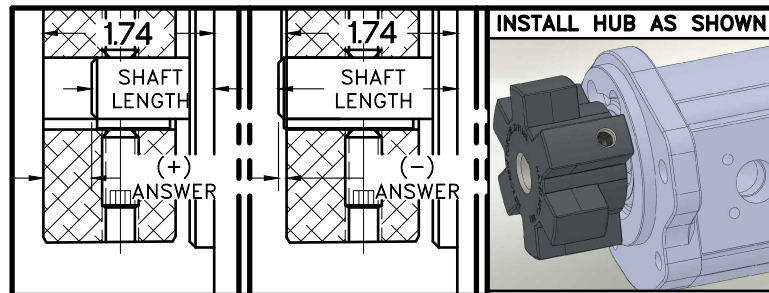
**PERFORM CALCULATION BELOW:**

**1.74 - SHAFT LENGTH = HUB PRESET**

IF YOUR ANSWER IS (+) SHAFT IS INSIDE OF HUB, IF  
YOUR ANSWER IS (-) SHAFT STICKS OUT OF HUB.  
(SEE BOXES)

THIS DRAWING IS THE PROPERTY OF HAYES MFG. INC. AND IS LOANED  
SUBJECT TO THE CONDITION THAT IT SHALL NOT BE REPRODUCED,  
COPIED, LOANED OR OTHERWISE DISPOSED OF, DIRECTLY OR INDIRECTLY.  
IT SHALL BE USED AS A MEANS OF REFERENCE TO WORK FURNISHED BY  
THIS COMPANY ONLY AND IS NOT TO BE SUBMITTED TO OUTSIDE PARTIES  
FOR EXAMINATION WITHOUT OUR CONSENT.

**NOTE: THIS STEP IS IMPORTANT TO  
ENSURE FULL SHAFT ENGAGEMENT.**



DET.	PART NUMBER	DESCRIPTION	QTY.
3	123008-E04	PUMP MOUNT PLATE	1
2	HC1-43	C SERIES HEX~FLX HUB	1
1	C-075	SAE 7 1/2 HEX~FLX DRIVE PLATE	1

SYMBOLS		DET.	PART NUMBER	DESCRIPTION	QTY.
	FLATNESS	DO NOT SCALE DRAWING			
	STRAIGHTNESS	TOLERANCES UNLESS OTHERWISE SPECIFIED			
	ANGULARITY	1/32\" MAXIMUM			
	PERPENDICULARITY	ANGLE ±1/2\"			
	PARALLELISM	FRACTION ±1/32			
	CONCENTRICITY	DECIMAL			
	TRUE POSITION	.00 ±.01			
	ROUNDNESS	.000 ±.005			
	CIRCULAR RUN OUT	.0000 ±.0005			
	TOTAL RUN OUT	.0000 ±.0005			
	CYLINDRICITY	.0000 ±.0005			
	FINISH				
CLASS		DRAWING BY			
SAE 7.5		MAKE: <input checked="" type="checkbox"/> BUY: <input type="checkbox"/>		DATE	
DESCRIPTION		7-1/2,4,1-1/4x5/16,B4		12-04-2017	
		DRAWING NO.		C-075-HC1-43-E04	
		SHEET		OF	
		REV.			