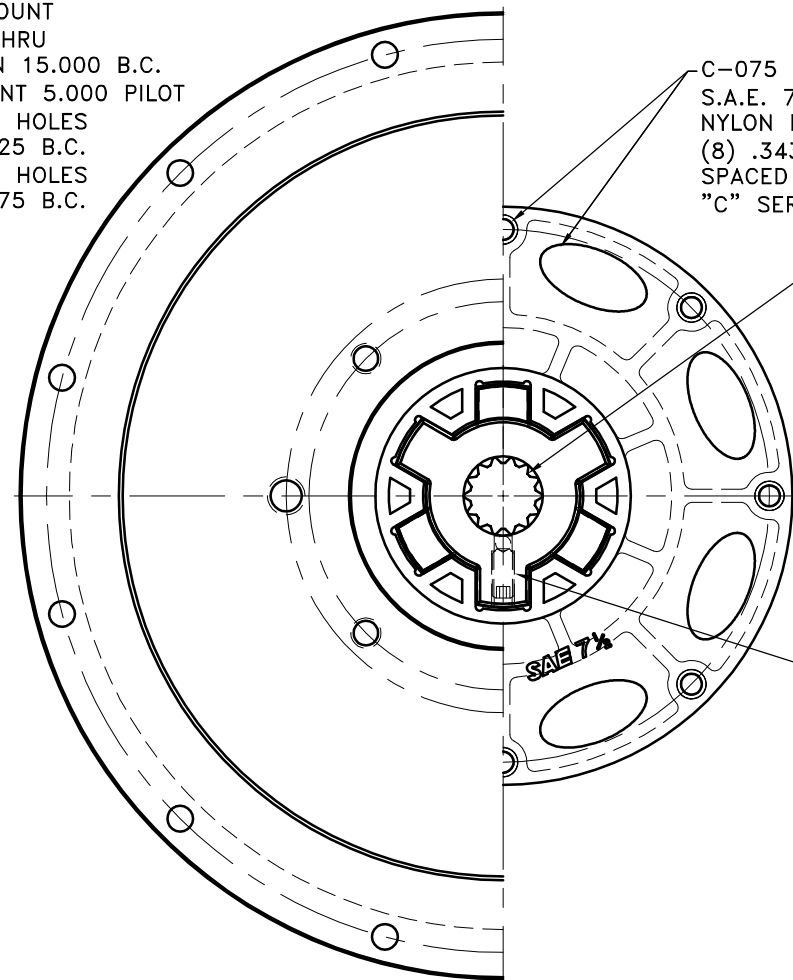


P/N 123845-09  
 SAE #4 HOUSING MOUNT  
 (12) 27/64 DRILL THRU  
 EQUALLY SPACED ON 15.000 B.C.  
 SAE "C" PUMP MOUNT 5.000 PILOT  
 (2) 5/8-11 TAPPED HOLES  
 EQ. SPACED ON 7.125 B.C.  
 (4) 1/2-13 TAPPED HOLES  
 EQ. SPACED ON 6.375 B.C.

PUMP  
 OR  
 MOTOR



C-075  
 S.A.E. 7 1/2 FIBERGLASS REINFORCED  
 NYLON DRIVE PLATE  
 (8) .343 HOLES EQ.  
 SPACED ON A 8.75 B.C.  
 "C" SERIES DRIVE

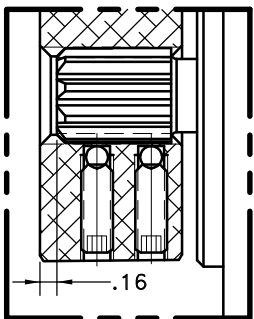
HC1-92  
 SPLINE DATA  
 14 TEETH  
 12/24 D.P.  
 30° P.A.  
 1.263 MAJOR  
 SAE "C"

(2) 3/8" SET SCREWS  
**TORQUE BOTH TO 20 FT. LBS  
 USING TORQUE WRENCH AT  
 FINAL INSTALLATION**

**NOTE: THIS STEP IS IMPORTANT TO  
 ENSURE FULL SPLINE ENGAGEMENT.**

- 1) PRESET HUB ON SHAFT AS SHOWN.
- 2) IF YOUR PUMP SHAFT VARIES FROM THE DRAWN SHAFT LENGTH, CONTACT FACTORY FOR RECOMMENDATIONS.
- 3) **TORQUE BOTH SET SCREWS TO 20 FT.LBS. USING TORQUE WRENCH.**
- 4) SHAFT SHOULD HAVE FULL SPLINE ENGAGEMENT INTO HUB, IF NOT CONTACT FACTORY FOR RECOMMENDATIONS (231) 879-3372.

THIS DRAWING IS THE PROPERTY OF HAYES MFG. INC. AND IS LOANED SUBJECT TO THE CONDITION THAT IT SHALL NOT BE REPRODUCED, COPIED, LOANED OR OTHERWISE DISPOSED OF, DIRECTLY OR INDIRECTLY. IT SHALL BE USED AS A MEANS OF REFERENCE TO WORK FURNISHED BY THIS COMPANY ONLY AND IS NOT TO BE SUBMITTED TO OUTSIDE PARTIES FOR EXAMINATION WITHOUT OUR CONSENT.



**IMPORTANT INSTALLATION**

**NOTE!!!!**

IMPROPER INSTALLATION OF HUB COULD CAUSE PREMATURE WEAR AND OR FAILURE.

IF YOU HAVE QUESTIONS CONCERNING LOCATION OF METAL HUB ON PUMP SHAFT PLEASE CONTACT DISTRIBUTOR OR FACTORY FOR FURTHER INFORMATION.

**BOTH HUB SET SCREWS MUST BE PROPERLY TORQUED TO 20 FT.LBS. USING TORQUE WRENCH . PLEASE CONTACT DISTRIBUTOR OR FACTORY FOR ANY FURTHER QUESTIONS.**

**"C" SERIES TORQUE RANGE  
 65-175 HP**

3	123845-09	PUMP MOUNT PLATE	1
2	HC1-92	C SERIES HEX~FLX HUB	1
1	C-075	SAE 7 1/2 HEX~FLX DRIVE PLATE	1

DET.	PART NUMBER	DESCRIPTION	QTY.
<div> <div> SYMBOLS  — FLATNESS  — STRAIGHTNESS  — ANGULARITY  — PERPENDICULARITY  — PARALLELISM  — CONCENTRICITY  — TRUE POSITION  — ROUNDNESS  — CIRCULAR RUN OUT  — TOTAL RUN OUT  — CYLINDRICITY  — FINISH </div> <div> DO NOT SCALE DRAWING  TOLERANCES UNLESS OTHERWISE SPECIFIED  FRACTION 1/32  ANGLE ±1/2°  FRACTION ±1/32  DECIMAL .00 ±.01  .000 ±.005  .0000 ±.0005 </div> </div>			
<div> <div> <b>HAYES</b>  MANUFACTURING INC. ® </div> <div> TITLE  HEX~FLX COUPLING ASS'Y </div> <div> MATERIAL </div> </div>			
UNLESS OTHERWISE SPECIFIED - REMOVE FIRST THREAD ON ALL TAPPED HOLES BREAK ALL SHARP CORNERS .010 TO .020 STAMP OR MARK DRAWING NO.		DRAWN BY SIETING CHECKED BY RJH	DATE 11-09-07 SCALE DRAWING NO. C-075-HC1-92-EX24 SHEET OF REV.