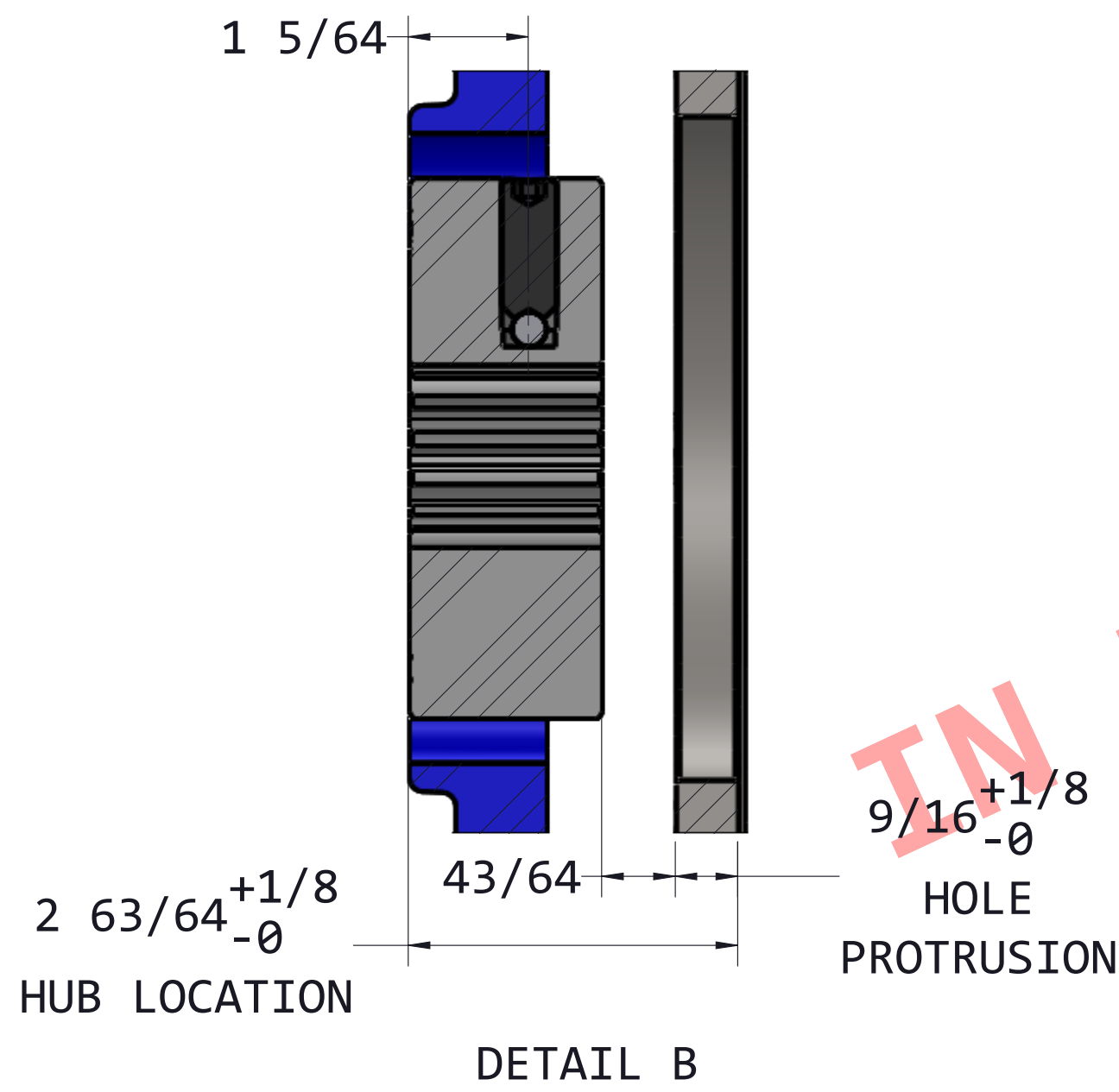
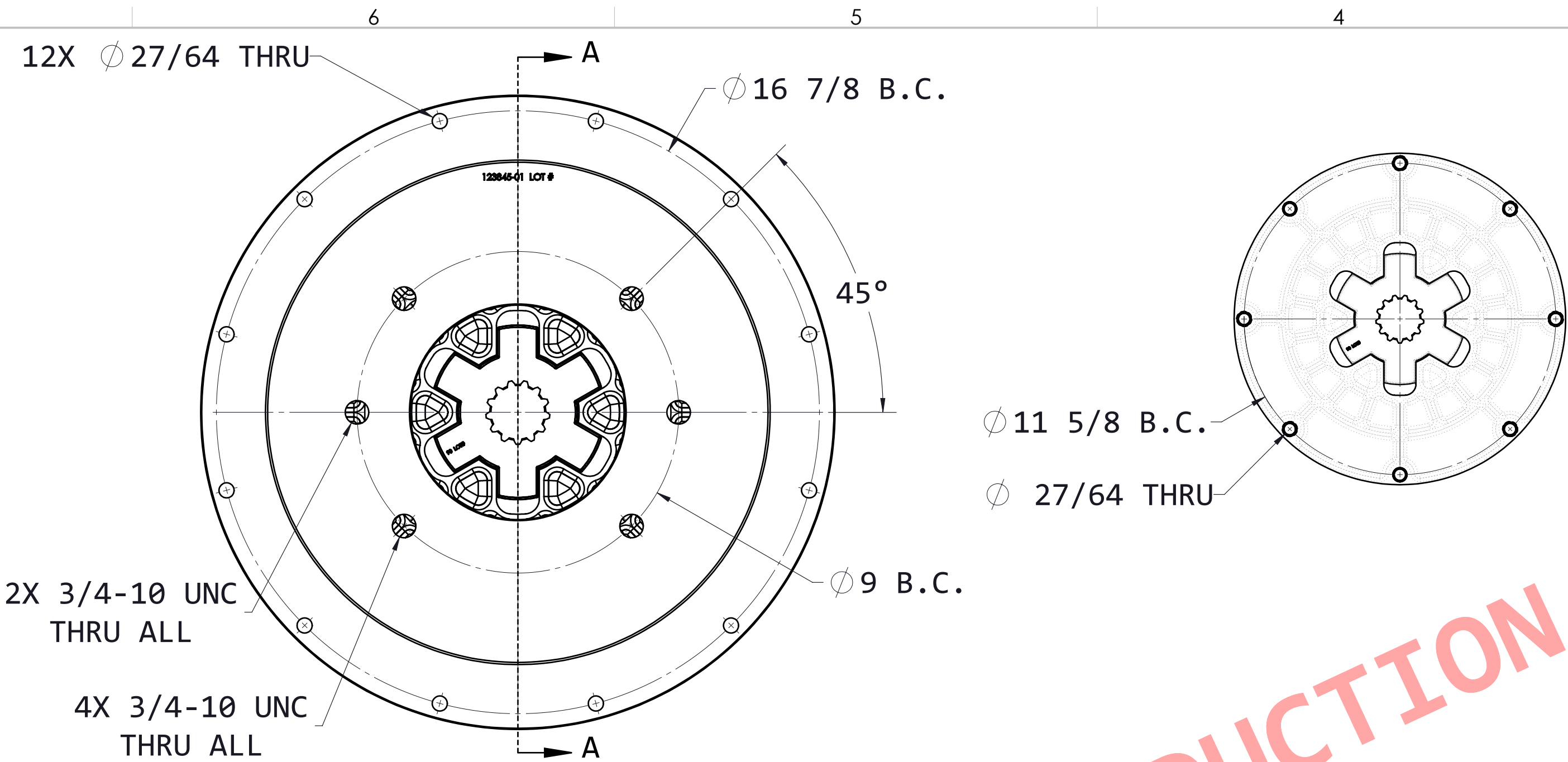
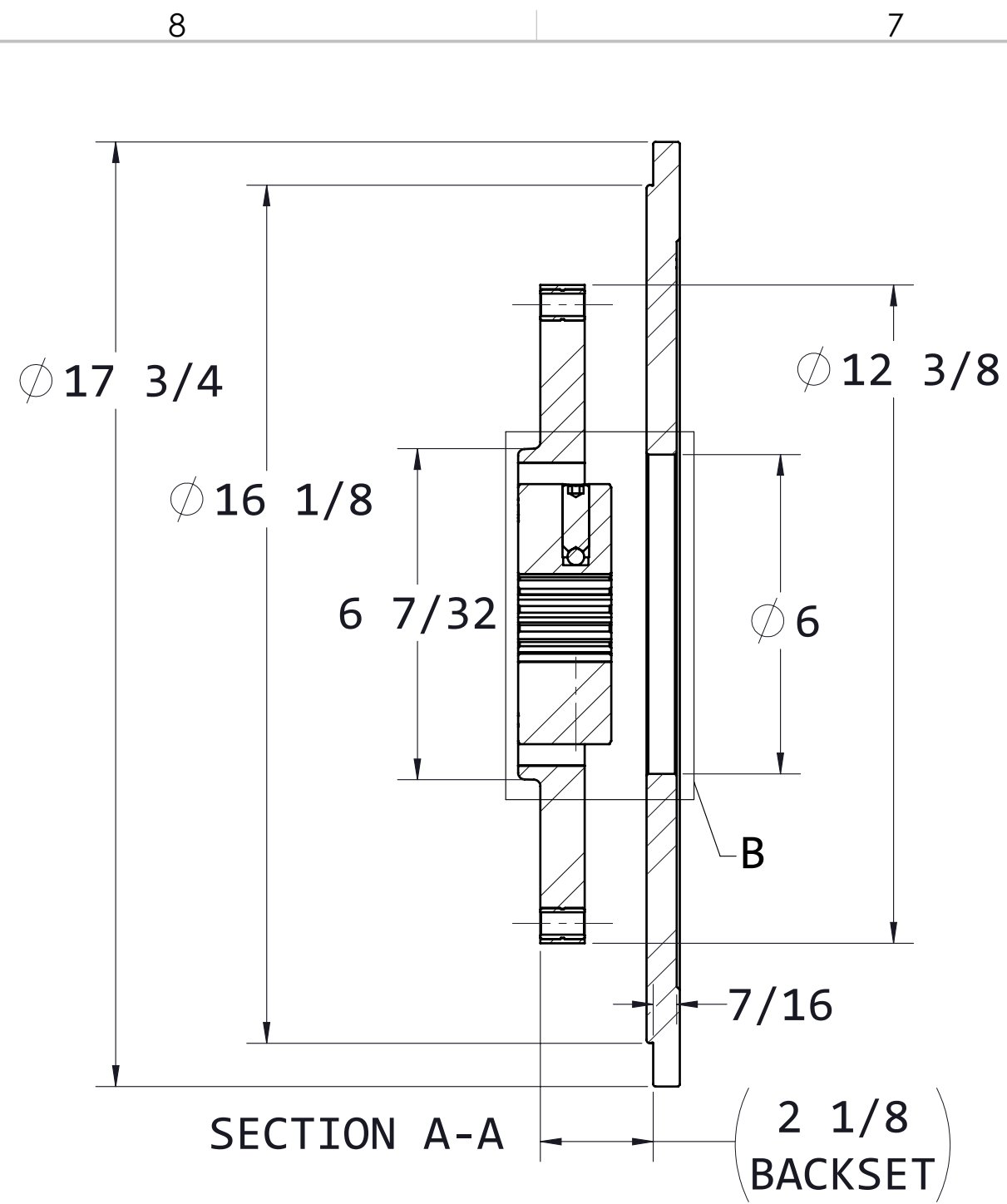


CUSTOMER

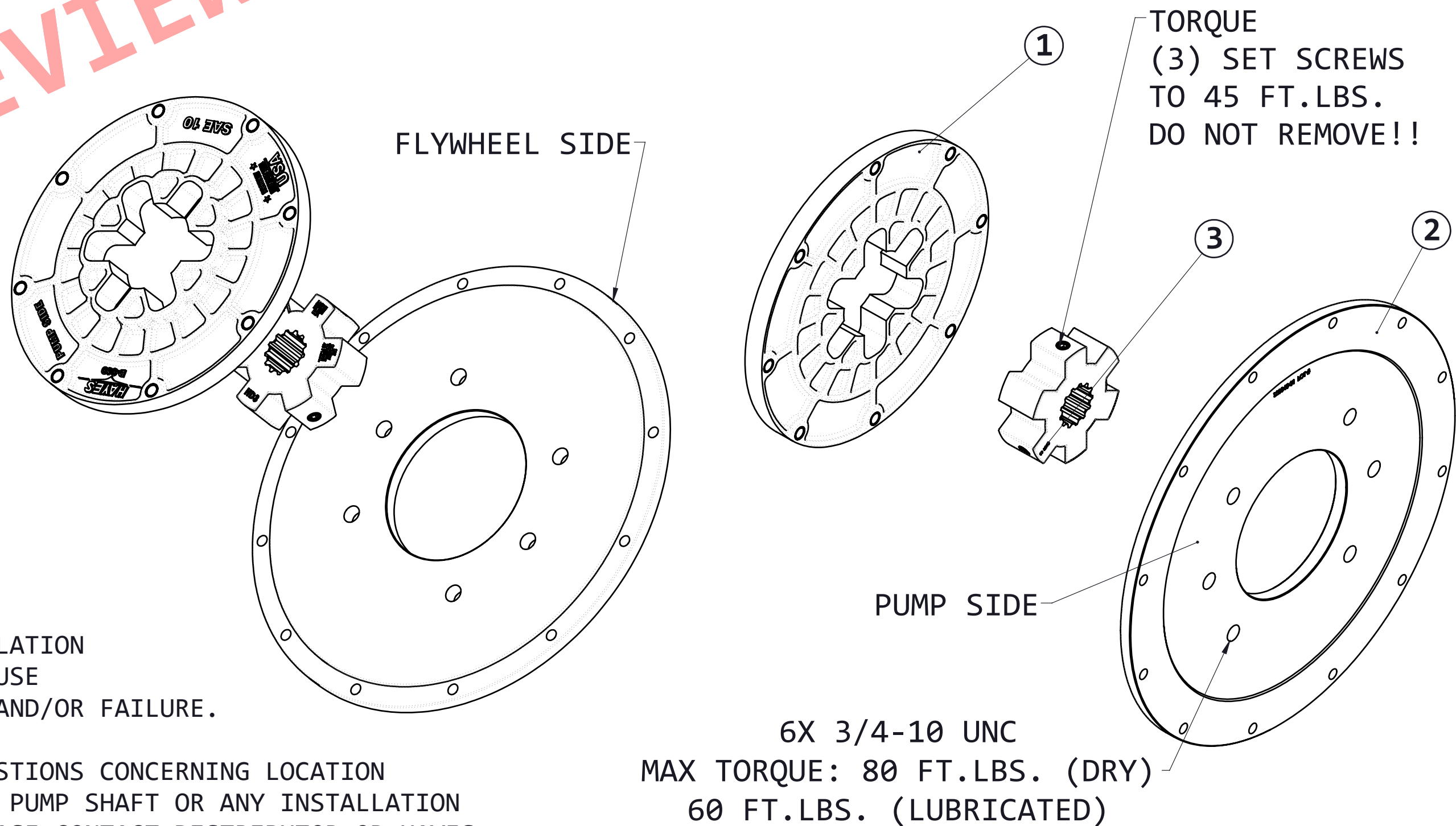


PUMP DRIVE SPECS	
FLYWHEEL	SAE 10
HOUSING	SAE 3
PUMP FLANGE	SAE D 2&4 BOLT
PUMP SHAFT	13T 8/16
HP RATING (@1800 RPM)	TBD

**WARNINGS!!!**

IMPROPER INSTALLATION OF HUB COULD CAUSE PREMATURE WEAR AND/OR FAILURE.

IF YOU HAVE QUESTIONS CONCERNING LOCATION OF METAL HUB ON PUMP SHAFT OR ANY INSTALLATION PROCEDURES, PLEASE CONTACT DISTRIBUTOR OR HAYES MANUFACTURING FOR FURTHER INFORMATION.



**INSTALLATION INSTRUCTIONS**

**FLYWHEEL MOUNT**

- BE SURE FLYWHEEL IS CLEAN AND FREE OF RUST AND DEBRIS.
- INSTALL HEX-FLX DRIVE PLATE TO FLYWHEEL USING PROPER INSTALLATION ORIENTATION. (SEE DIAGRAMS)
- HAYES MANUFACTURING RECOMMENDS THE USE OF GRADE 8/CLASS 10.9 FASTENERS, NO LOCK WASHERS, AND CHOICE OF RED OR BLUE THREAD LOCKER. TORQUE BOLTS TO ENGINE MFG. SPECS OR STANDARD TORQUE FOR GRADE/CLASS AND SIZE OF THREAD.

**PUMP PLATE/HOUSING MOUNT**

- BE SURE ENGINE HOUSING IS CLEAN AND FREE OF RUST AND DEBRIS.
- INSTALL PUMP MOUNT PLATE USING PROPER INSTALLATION ORIENTATION. (SEE DIAGRAMS)
- CHECK TO MAKE SURE DRIVE HUB FITS THROUGH PUMP PILOT BORE OF PUMP MOUNT PLATE.
- IF HEX-FLX HUB FITS THROUGH PUMP PILOT OF MOUNTING PLATE, THEN INSTALL PUMP MOUNT PLATE TO ENGINE.
- IF HUB DOES NOT FIT THROUGH PUMP PILOT BORE. FOLLOW THE NEXT STEPS, IN THIS ORDER.
- SEE INSTRUCTIONS FOR PUMP MOUNTING.
- SEE INSTRUCTIONS FOR DRIVE HUB MOUNTING.
- HAYES MANUFACTURING RECOMMENDS THE USE OF GRADE 5/CLASS 8.8 OR BETTER FASTENER. USE YOUR CHOICE OF WASHERS AND/OR THREAD LOCKER. TORQUE TO ENGINE MFG RECOMMENDATIONS OR USE STANDARD TORQUE FOR GRADE/CLASS AND SIZE OF BOLT.

**DRIVE HUB MOUNTING**

- BE SURE PUMP SHAFT IS CLEAN AND FREE OF GREASE OR OIL
- INSTALL HUB ONTO PUMP SHAFT USING PROPER ORIENTATION. (SEE DIAGRAMS)
- HUB LOCATION IS IMPORTANT TO ENSURE PROPER ASSEMBLY. WHILE MAINTAINING HUB LOCATION, TORQUE SET SCREWS TO 45 FT.LBS.

**WARNING!!!** BE SURE THAT BOTH SET SCREWS ARE OVER THE PUMP SHAFT OR DAMAGE WILL OCCUR TO THE HUB.

**PUMP MOUNTING**

- BE SURE PUMP FACE IS CLEAN AND FREE OF RUST AND DEBRIS.
- INSTALL PUMP TO PUMP PLATE. INSURE PUMP SITS FLAT AND FULLY AGAINST PUMP MOUNT PLATE FACE.
- HAYES MANUFACTURING RECOMMENDS THE USE OF GRADE 5/CLASS 8.8 OR BETTER FASTENER. USE YOUR CHOICE OF WASHERS AND/OR THREAD LOCKER. TORQUE TO HAYES MANUFACTURING RECOMMENDATIONS. (SEE DIAGRAMS)

**WARNING!!!** BOLTS MUST NOT PROTRUDE THRU PUMP MOUNT PLATE OR DAMAGE MAY OCCUR!

ITEM NO.	PART NUMBER	DESCRIPTION	QTY
1	D-010	SAE 10 DRIVE PLATE	1
2	123845-01	PUMP MOUNT PLATE	1
3	HD3-90	HEX-FLX HUB	1

NOT FOR MANUFACTURING PURPOSES

		NAME		DATE	06-19-25
DRAWN		ENG		APR	
QA		PCM		APR	
TITLE		HEX-FLX PUMP DRIVE KIT		SEE DCR	
REV		REV		06-19-25	
DRAWING #		D-010-HD3-90-DS24		SHEET 1 OF 2	
UNLESS OTHERWISE SPECIFIED:		CLASS		SAE 10	
DIMENSIONS ARE IN INCHES		DESCRIPTION		10, 3, 13T8/16, D24	
TOLERANCES: FRACTIONAL: ±1/32		WEIGHT		42.3 LBS	
ANGULAR: MACH ±1/2°		VOLUME		CU. IN.	
TWO DECIMAL ±.01		Make			
THREE DECIMAL ±.005					
FOUR DECIMAL ±.0005					
STANDARD SYMBOLS					
▽ HOLE DEPTH					
COUNTERSINK					
CONCENTRICITY					
TRUE POSITION					
PERPENDICULARITY					
CIRCULAR RUN OUT					
TOTAL RUN OUT					



2A