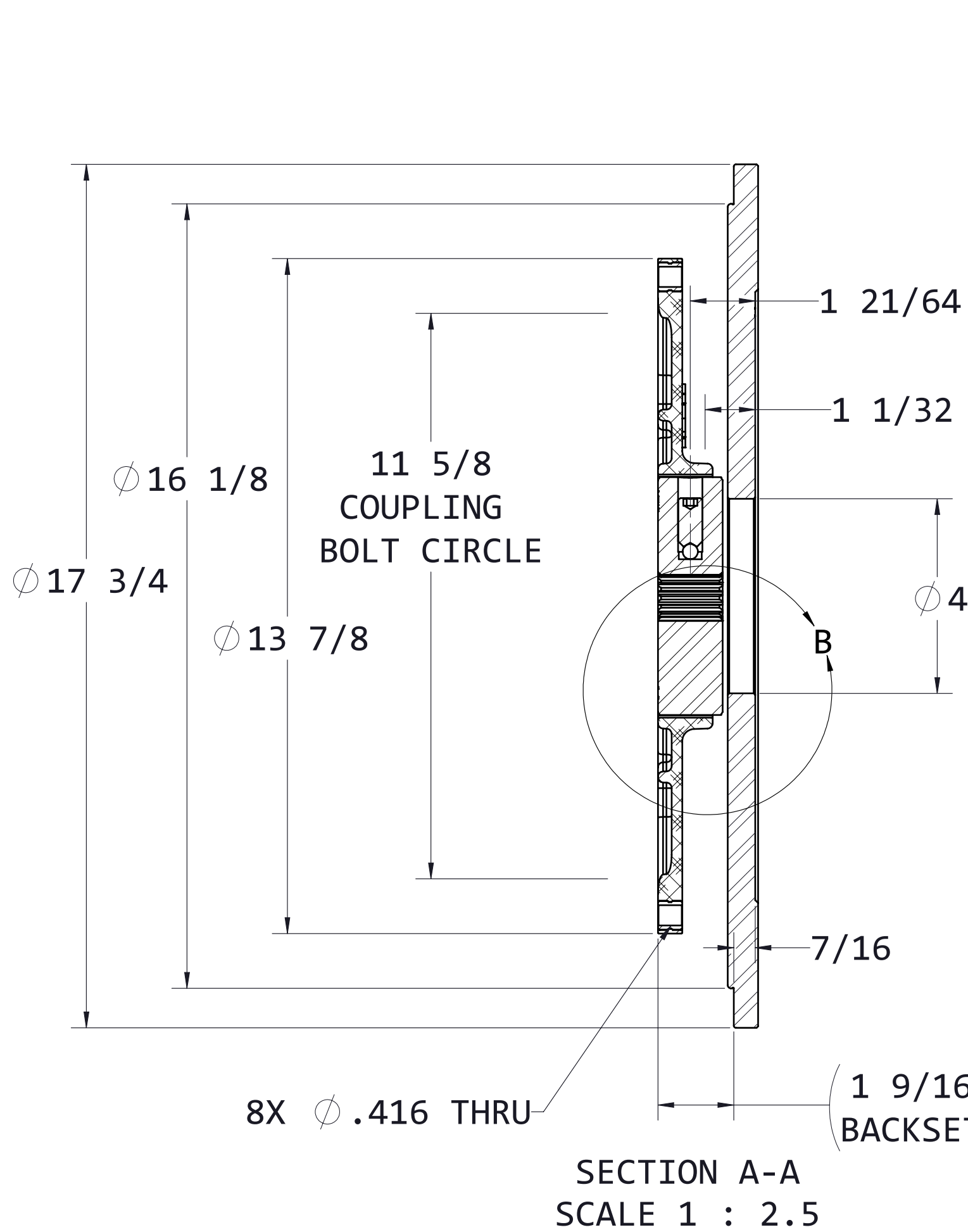
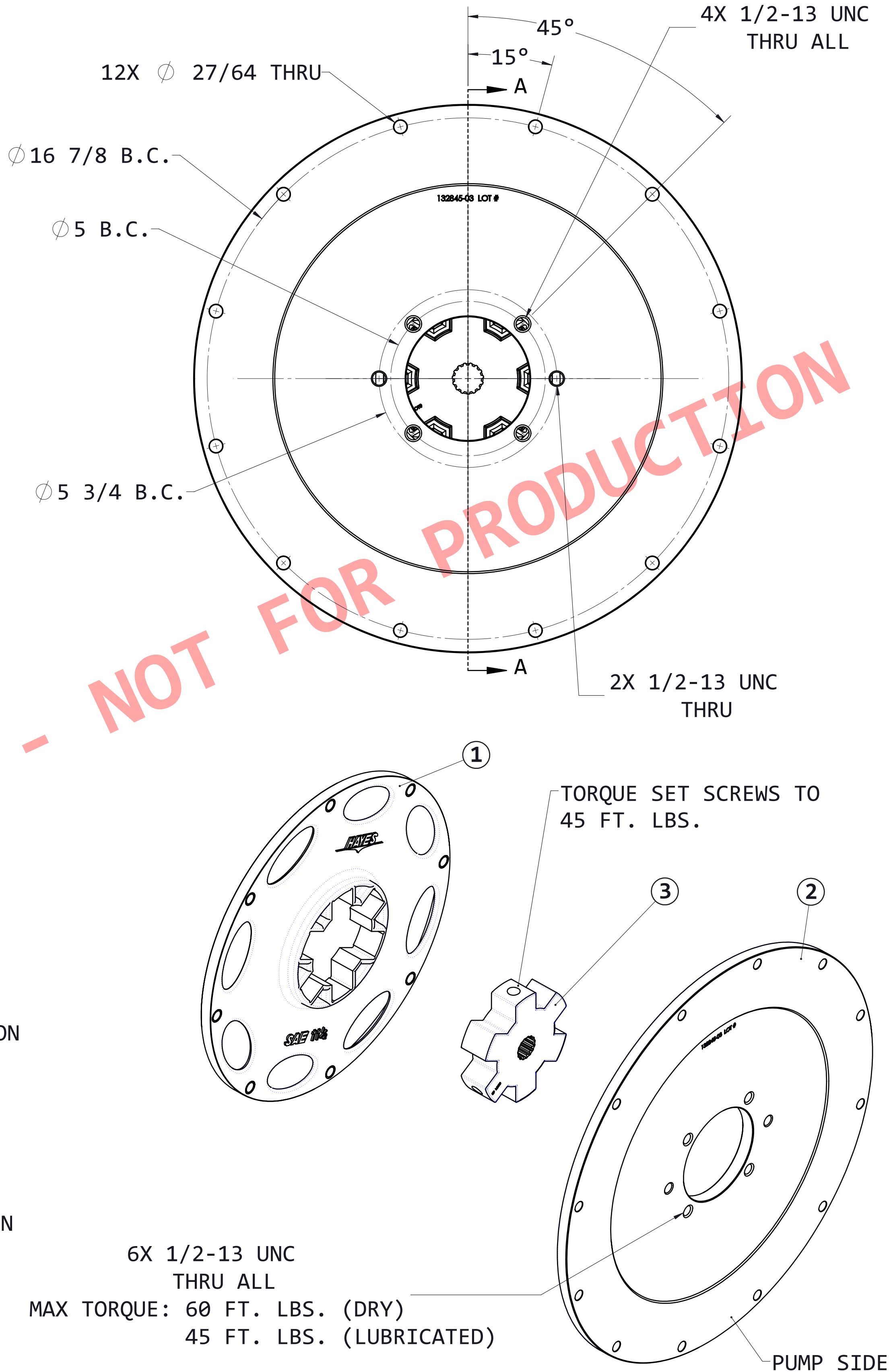
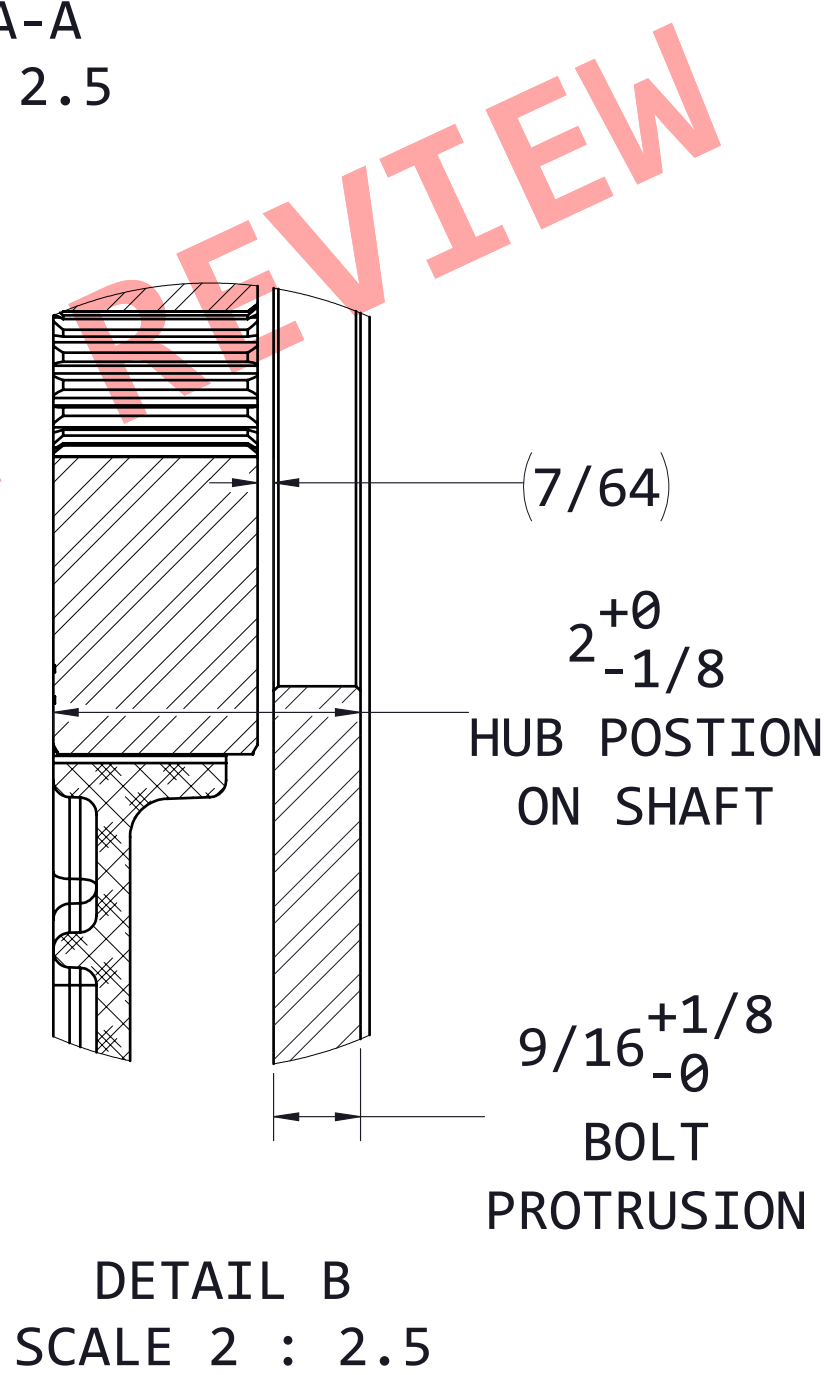


CUSTOMER



PUMP DRIVE SPECS	
FLYWHEEL	SAE 11.5
HOUSING	SAE 3
PUMP FLANGE	SAE B 2&4 BOLT
PUMP SHAFT	15T 16/32
HP RATING (@1800 RPM)	600



### INSTALLATION INSTRUCTIONS

#### FLYWHEEL MOUNT

- BE SURE FLYWHEEL IS CLEAN AND FREE OF RUST AND DEBRIS.
- INSTALL HEX-FLX DRIVE PLATE TO FLYWHEEL USING PROPER INSTALLATION ORIENTATION. (SEE DIAGRAMS)
- HAYES MANUFACTURING RECOMMENDS THE USE OF GRADE 8/CLASS 10.9 FASTENERS, NO LOCK WASHERS, AND CHOICE OF RED OR BLUE THREAD LOCKER. TORQUE BOLTS TO ENGINE MFG. SPECS OR STANDARD TORQUE FOR GRADE/CLASS AND SIZE OF THREAD.

#### PUMP PLATE/HOUSING MOUNT

- BE SURE ENGINE HOUSING IS CLEAN AND FREE OF RUST AND DEBRIS.
- INSTALL PUMP MOUNT PLATE USING PROPER INSTALLATION ORIENTATION. (SEE DIAGRAMS)
- CHECK TO MAKE SURE DRIVE HUB FITS THROUGH PUMP PILOT BORE OF PUMP MOUNT PLATE.
- IF HEX-FLX HUB FITS THROUGH PUMP PILOT OF MOUNTING PLATE, THEN INSTALL PUMP MOUNT PLATE TO ENGINE.
- IF HUB DOES NOT FIT THROUGH PUMP PILOT BORE. FOLLOW THE NEXT STEPS, IN THIS ORDER.
- SEE INSTRUCTIONS FOR PUMP MOUNTING.
- SEE INSTRUCTIONS FOR DRIVE HUB MOUNTING.
- HAYES MANUFACTURING RECOMMENDS THE USE OF GRADE 5/CLASS 8.8 OR BETTER FASTENER. USE YOUR CHOICE OF WASHERS AND/OR THREAD LOCKER. TORQUE TO ENGINE MFG RECOMMENDATIONS OR USE STANDARD TORQUE FOR GRADE/CLASS AND SIZE OF BOLT.

#### DRIVE HUB MOUNTING

- BE SURE PUMP SHAFT IS CLEAN AND FREE OF GREASE OR OIL
- INSTALL HUB ONTO PUMP SHAFT USING PROPER ORIENTATION. (SEE DIAGRAMS)
- HUB LOCATION IS IMPORTANT TO ENSURE PROPER ASSEMBLY. WHILE MAINTAINING HUB LOCATION, TORQUE SET SCREWS TO 45 FT.LBS.

**WARNING!!!** BE SURE THAT BOTH SET SCREWS ARE OVER THE PUMP SHAFT OR DAMAGE WILL OCCUR TO THE HUB.

#### PUMP MOUNTING

- BE SURE PUMP FACE IS CLEAN AND FREE OF RUST AND DEBRIS.
- INSTALL PUMP TO PUMP PLATE. INSURE PUMP SITS FLAT AND FULLY AGAINST PUMP MOUNT PLATE FACE.
- HAYES MANUFACTURING RECOMMENDS THE USE OF GRADE 5/CLASS 8.8 OR BETTER FASTENER. USE YOUR CHOICE OF WASHERS AND/OR THREAD LOCKER. TORQUE TO HAYES MANUFACTURING RECOMMENDATIONS. (SEE DIAGRAMS)

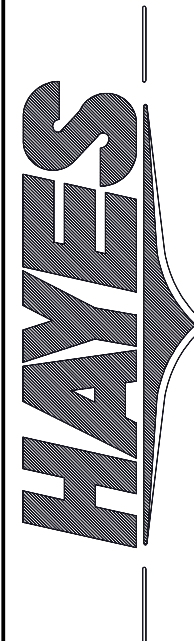
**WARNING!!!** BOLTS MUST NOT PROTRUDE THRU PUMP MOUNT PLATE OR DAMAGE MAY OCCUR!

#### WARNINGS!!!

IMPROPER INSTALLATION OF HUB COULD CAUSE PREMATURE WEAR AND/OR FAILURE.

IF YOU HAVE QUESTIONS CONCERNING LOCATION OF METAL HUB ON PUMP SHAFT OR ANY INSTALLATION PROCEDURES, PLEASE CONTACT DISTRIBUTOR OR HAYES MANUFACTURING FOR FURTHER INFORMATION.

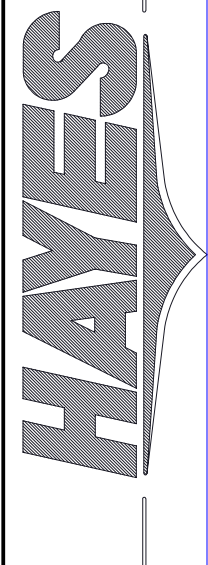
ITEM NO.	PART NUMBER	DESCRIPTION	QTY
1	D-115	SAE 11.5 HEX-FLX DRIVE PLATE	1
2	123845-03	PUMP MOUNT PLATE	1
3	HD1-89	HEX-FLX HUB	1



HEX-FLX PUMP DRIVE KIT

NAME	DATE		
VHA	06-19-25		
DRAWN	ENG	QA	PCM
APR	APR	APR	APR
PROPERTY AND CONFIDENTIALITY: THIS DRAWING IS THE SOLE PROPERTY OF HAYES MANUFACTURING. ANY REPRODUCTION IN PART OR FULL WITHOUT THE WRITTEN PERMISSION OF HAYES MANUFACTURING IS PROHIBITED.			
CLASS		DESCRIPTION	WEIGHT
SAE 10		11.5, 3, 15T16/32, B24	43.9 LBS
UNLESS OTHERWISE SPECIFIED:		DIMENSIONS ARE IN INCHES	TOLERANCES:
		FRACTIONAL: ±1/32	ANGULAR: MACH ±1/2°
		TWO DECIMAL ±.01	THREE DECIMAL ±.005
		FOUR DECIMAL ±.0005	
STANDARD SYMBOLS			
COUNTERBORE	SYMMETRIC	FLATNESS	ROUNDNESS
COUNTERSINK	CONCENTRICITY	TRUE POSITION	PERPENDICULARITY
			CIRCULAR RUN OUT
			TOTAL RUN OUT
			"R" RADIUS
TITLE		SEE DCR	REV
HEX-FLX PUMP DRIVE KIT			0
DRAWING #		REV DATE	REV
D-115-HD1-89-D024		06-19-25	0
SHEET 1 OF 2		DO NOT SCALE	



2

THE INFORMATION CONTAINED IN THIS DRAWING  
IS THE SOLE PROPERTY OF HAYES  
MANUFACTURING. ANY REPRODUCTION IN PART OR  
AS A WHOLE WITHOUT THE WRITTEN PERMISSION  
OF HAYES MANUFACTURING IS PROHIBITED.

VOLUME

 TOTAL RUN OUT "R" RADIUS