

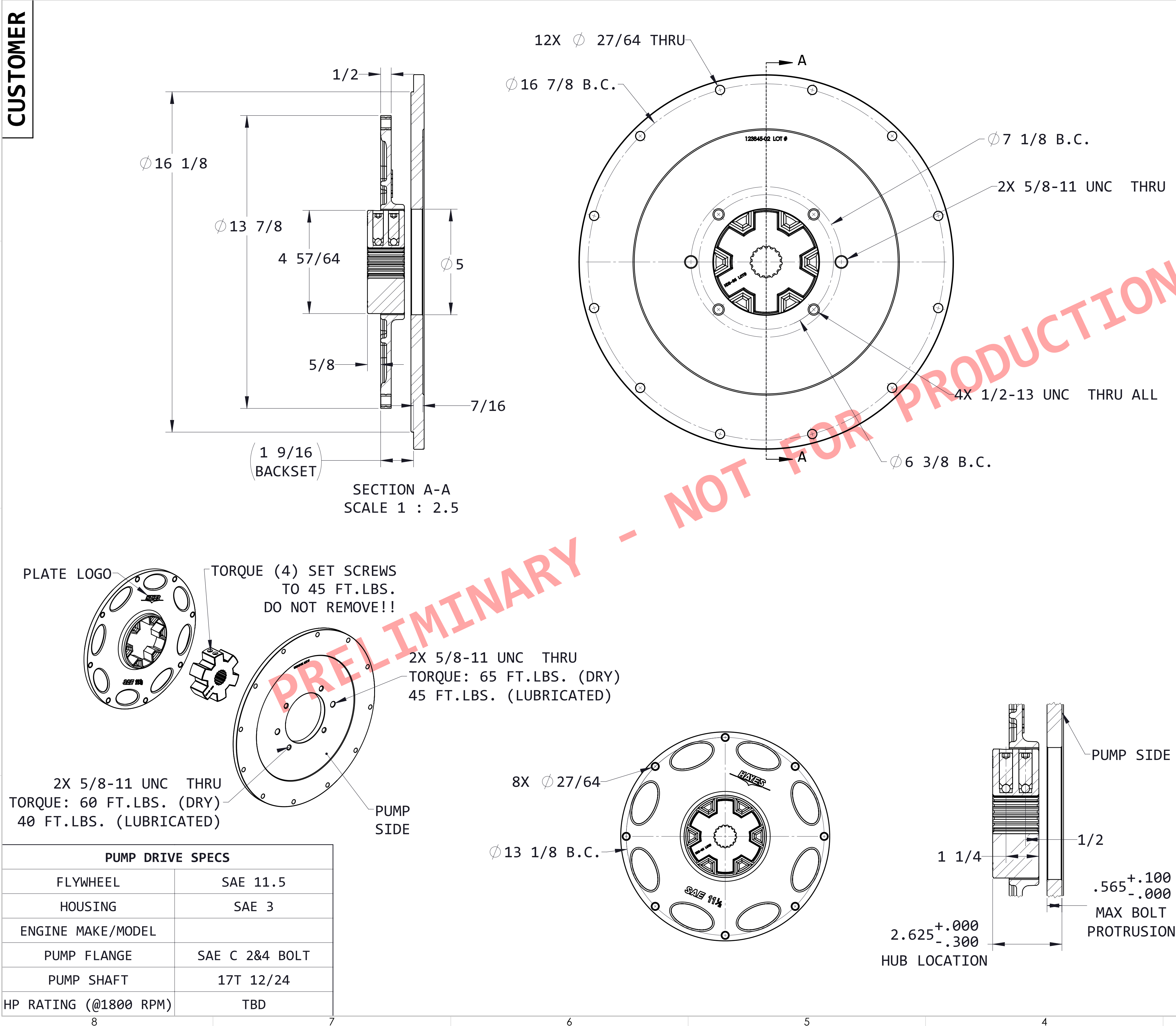
CUSTOMER

D

C

B

A



INSTALLATION INSTRUCTIONS

FLYWHEEL MOUNT

- BE SURE FLYWHEEL IS CLEAN AND FREE OF RUST AND DEBRIS.
- INSTALL HEX-FLX DRIVE PLATE TO FLYWHEEL USING PROPER INSTALLATION ORIENTATION (SEE DIAGRAMS)
- HAYES MANUFACTURING RECOMMENDS THE USE OF GRADE 8/CLASS 10.9 FASTENERS, NO LOCK WASHERS, AND CHOICE OF RED OR BLUE THREAD LOCKER. TORQUE BOLTS TO ENGINE MFG. SPECS OR STANDARD TORQUE FOR GRADE/CLASS AND SIZE OF THREAD.

HOUSING MOUNT

- BE SURE ENGINE HOUSING IS CLEAN AND FREE OF RUST AND DEBRIS.
- CHECK TO MAKE SURE DRIVE HUB FITS THROUGH PUMP PILOT BORE OF PUMP MOUNT PLATE.
- IF HEX-FLX HUB FITS THROUGH PUMP PILOT OF MOUNTING PLATE, THEN INSTALL PUMP MOUNT PLATE TO ENGINE.
  - IF HUB DOES NOT FIT THROUGH PUMP PILOT BORE. FOLLOW THE NEXT STEPS, IN THIS ORDER.
  - SEE INSTRUCTIONS FOR PUMP MOUNTING.
  - SEE INSTRUCTIONS FOR DRIVE HUB MOUNTING.
- HAYES MANUFACTURING RECOMMENDS THE USE OF GRADE 5/CLASS 8.8 OR BETTER FASTENER. USE YOUR CHOICE OF WASHERS AND/OR THREAD LOCKER. TORQUE TO ENGINE MFG RECOMMENDATIONS OR USE STANDARD TORQUE FOR GRADE/CLASS AND SIZE OF BOLT.

DRIVE HUB MOUNTING

- BE SURE PUMP SHAFT IS CLEAN AND FREE OF GREASE OR OIL
  - INSTALL HUB ONTO PUMP SHAFT USING PROPER ORIENTATION. (SEE DIAGRAMS)
  - HUB LOCATION IS IMPORTANT TO ENSURE PROPER ASSEMBLY. WHILE MAINTAINING HUB LOCATION, TORQUE SET SCREWS TO 45 FT.LBS.
- WARNING!!!** BE SURE THAT BOTH SET SCREWS ARE OVER THE PUMP SHAFT OR DAMAGE WILL OCCUR TO THE HUB.

PUMP MOUNTING

- BE SURE PUMP FACE IS CLEAN AND FREE OF RUST AND DEBRIS.
  - INSTALL PUMP TO PUMP PLATE. INSURE PUMP SITS FLAT AND FULLY AGAINST PUMP MOUNT PLATE FACE.
  - HAYES MANUFACTURING RECOMMENDS THE USE OF GRADE 5/CLASS 8.8 OR BETTER FASTENER. USE YOUR CHOICE OF WASHERS AND/OR THREAD LOCKER. TORQUE TO HAYES MANUFACTURING RECOMMENDATIONS (SEE DIAGRAMS)
- WARNING!!!** BOLTS MUST NOT PROTRUDE THRU PUMP MOUNT PLATE OR DAMAGE MAY OCCUR!

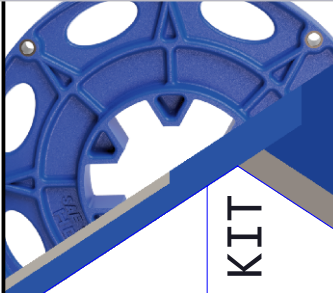
WARNINGS!!!

IMPROPER INSTALLATION OF HUB COULD CAUSE PREMATURE WEAR AND/OR FAILURE.

IF YOU HAVE QUESTIONS CONCERNING LOCATION OF METAL HUB ON PUMP SHAFT OR ANY INSTALLATION PROCEDURES, PLEASE CONTACT DISTRIBUTOR OR HAYES MANUFACTURING FOR FURTHER INFORMATION.

COUPLING IS NOT SERVICEABLE

ITEM NO.	PART NUMBER	DESCRIPTION	QTY
1	D-115	SAE 11.5 HEX-FLX DRIVE PLATE	1
2	123845-02	PUMP MOUNT PLATE	1
3	HD3-86	HEX-FLX HUB	1



**HAYES**

NAME	DATE	TITLE	SAE 11.5 17T 12/24 PUMP DRIVE KIT
DRAWN	ZJS	06-04-25	
ENG	APR		
QA	APR		
PCM	APR		
UNLESS OTHERWISE SPECIFIED:		CLASS	SAE 11.5
DIMENSIONS ARE IN INCHES		DESCRIPTION	11-1/2, 3, 17T12/24, C24
TOLERANCES: FRACTIONAL: ±1/32 DECIMAL: ±.01 THREE DECIMAL: ±.005 FOUR DECIMAL: ±.0005		WEIGHT	43.8 LBS
COUNTERBORE		VOLUME	CU.IN.
COUNTERSINK		Make	
CONCENTRICITY			
TRUE POSITION			
PERPENDICULARITY			
PARALLELISM			
CIRCULAR RUN OUT			
TOTAL RUN OUT			

STANDARD SYMBOLS

- ▽ HOLE DEPTH
- ≡ SYMMETRIC
- ⊥ FLATNESS
- ⊙ TRUE POSITION
- ⊙ PERPENDICULARITY
- ⊙ PARALLELISM
- ⊙ CIRCULAR RUN OUT
- ⊙ TOTAL RUN OUT
- ⊙ "R" RADIUS

D

C

B

A