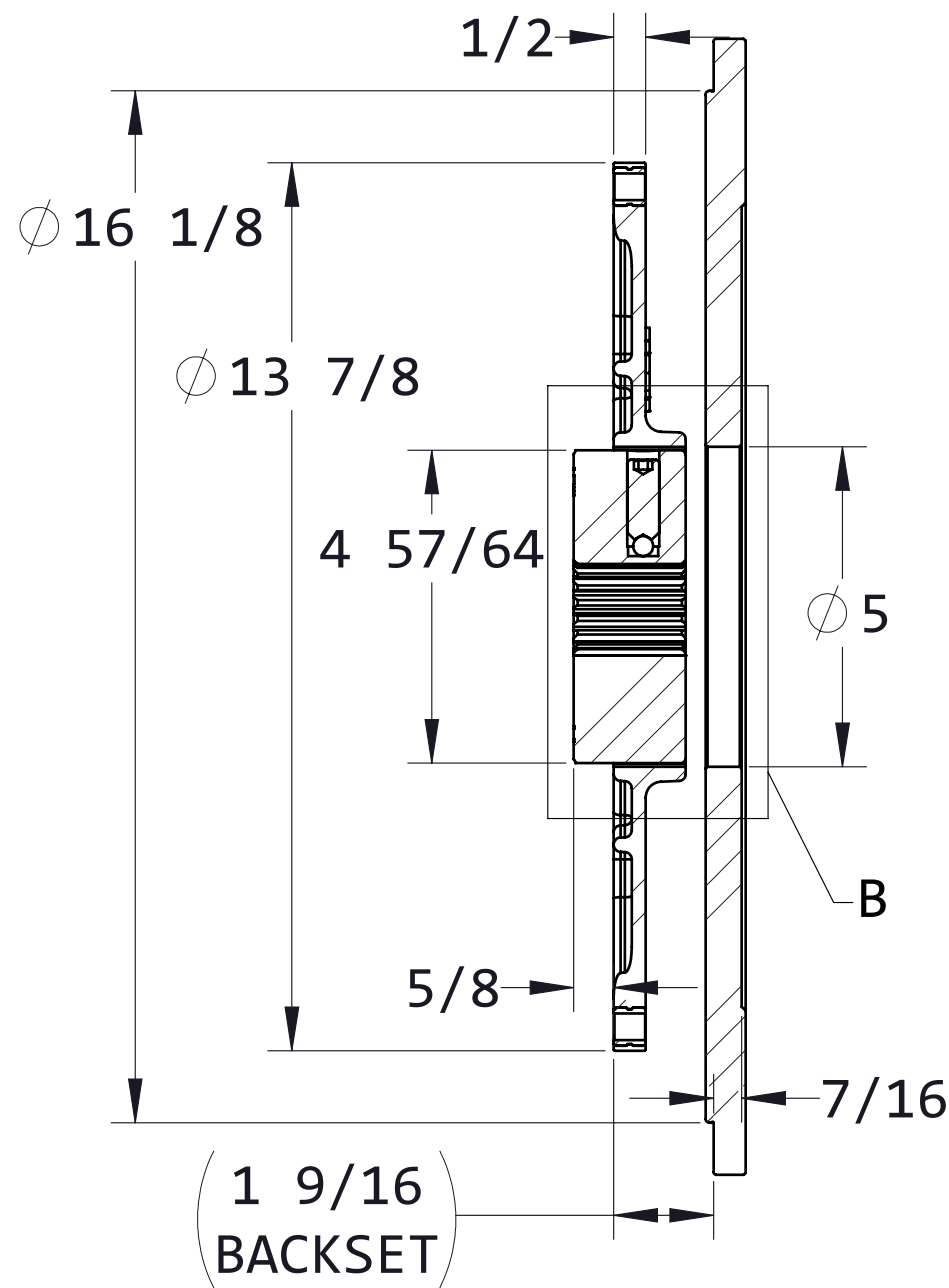
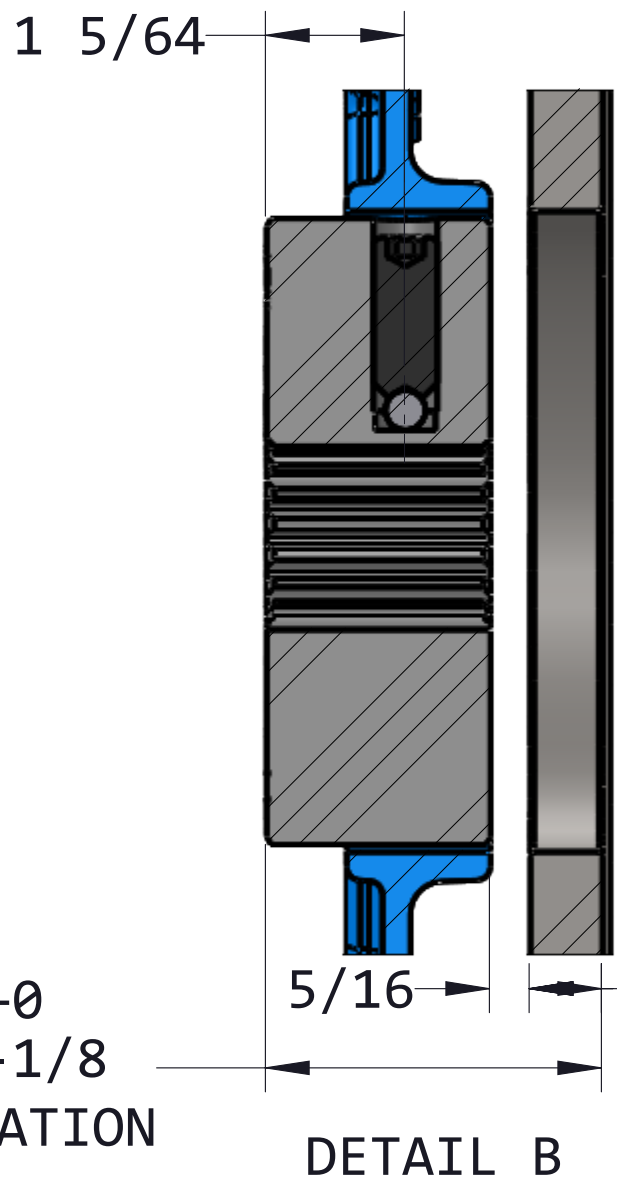
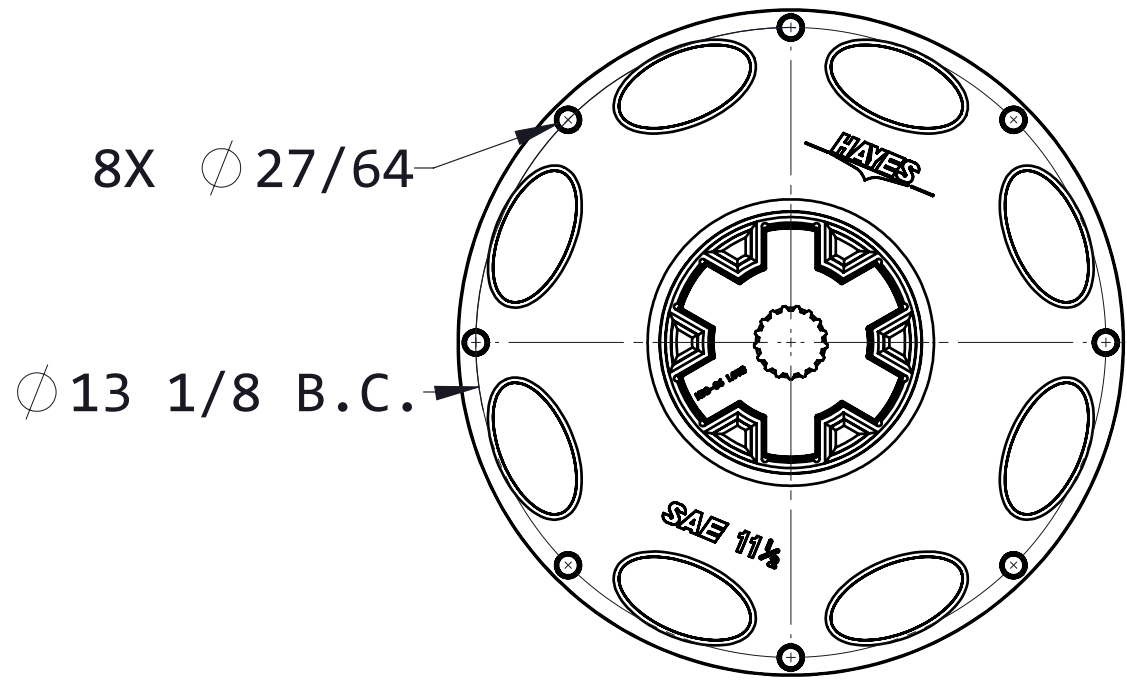
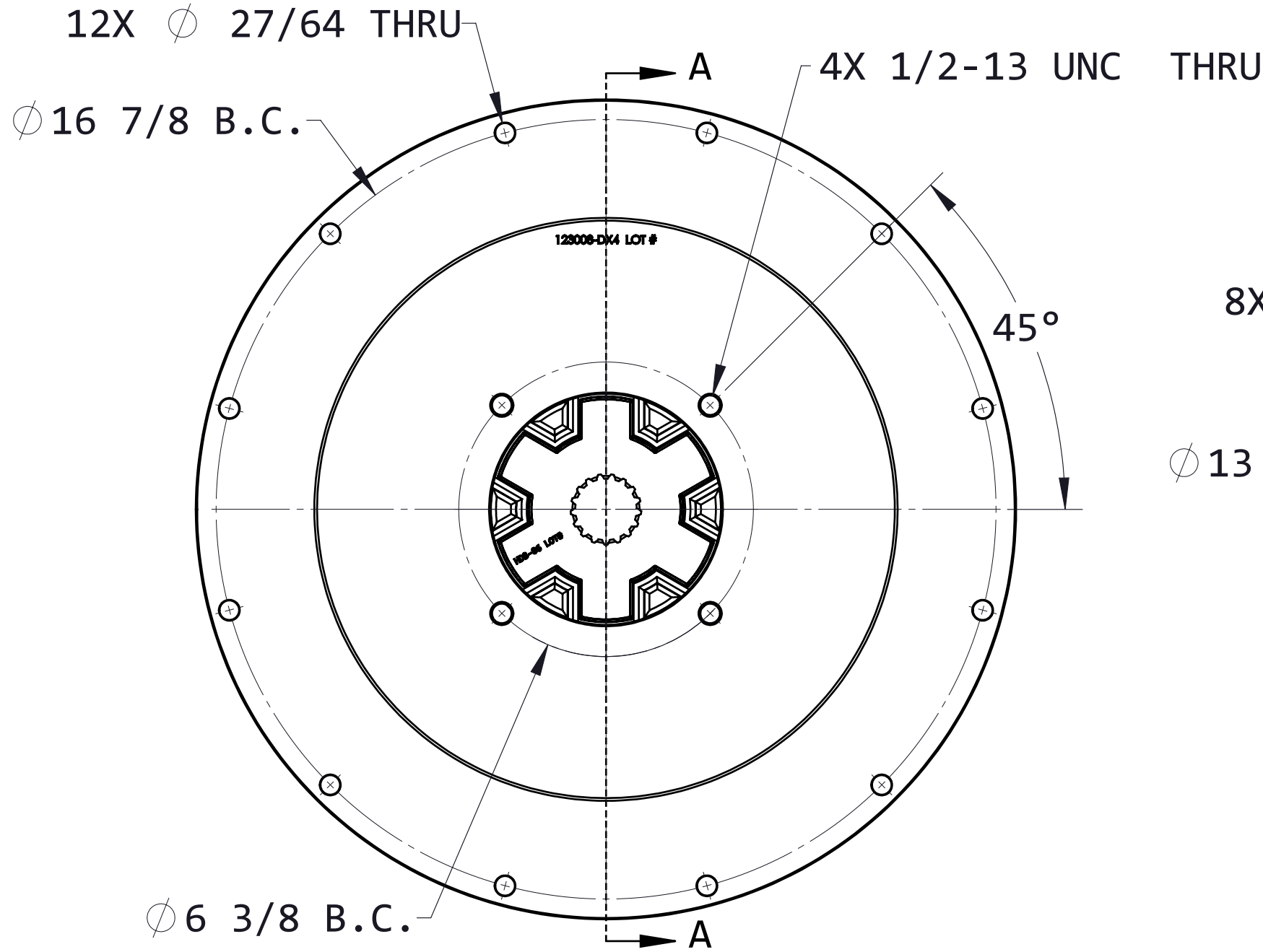


CUSTOMER



SECTION A-A

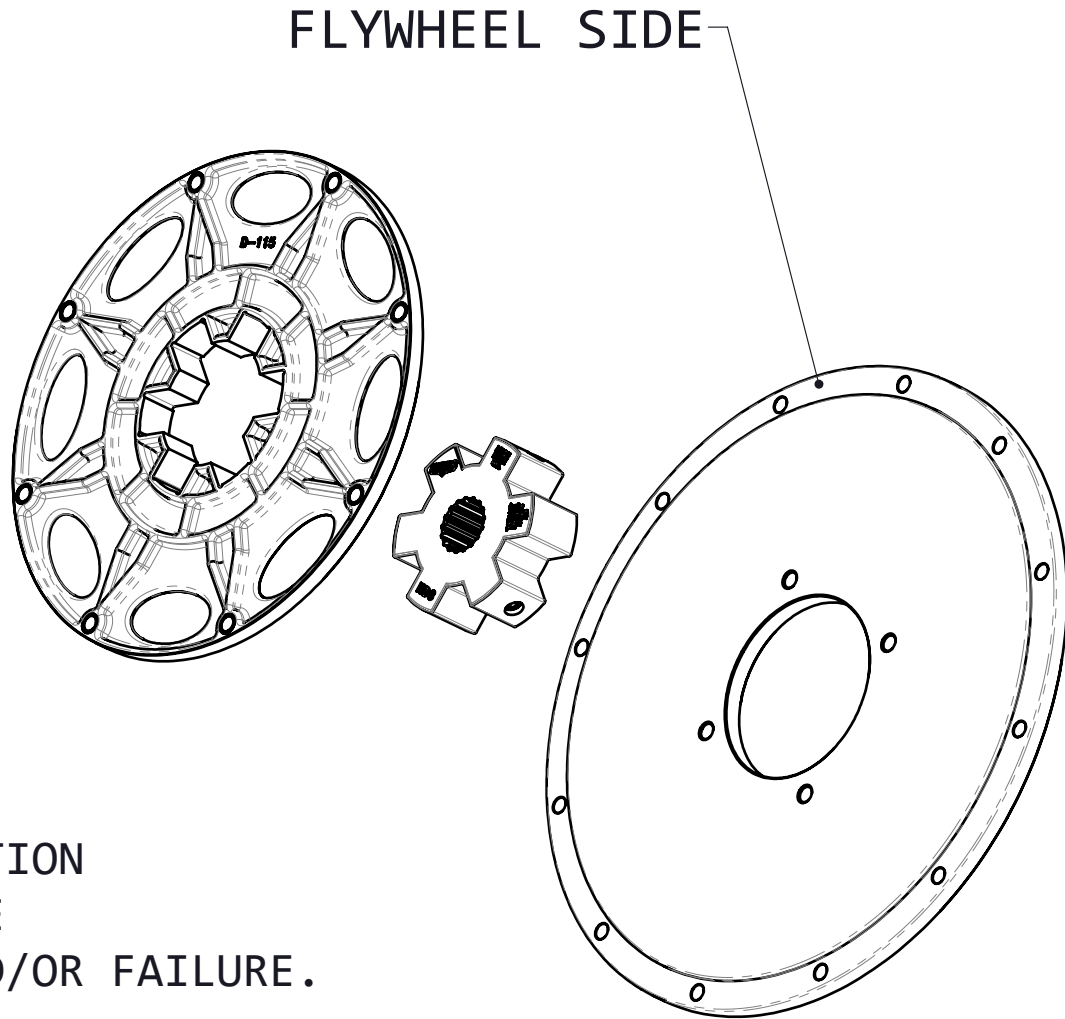


BOLT PROTRUSION

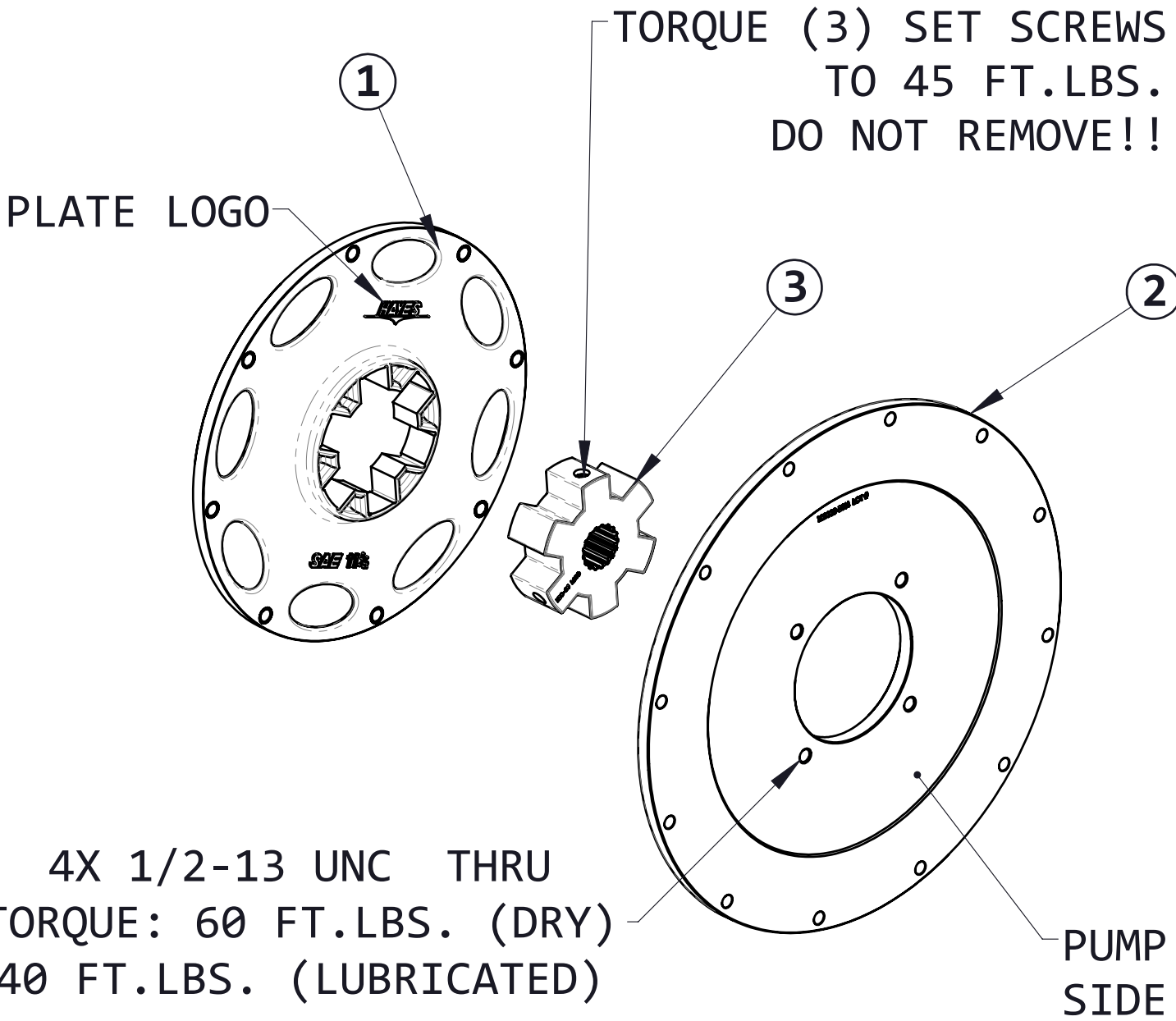
WARNINGS!!!

IMPROPER INSTALLATION OF HUB COULD CAUSE PREMATURE WEAR AND/OR FAILURE.

IF YOU HAVE QUESTIONS CONCERNING LOCATION OF METAL HUB ON PUMP SHAFT OR ANY INSTALLATION PROCEDURES, PLEASE CONTACT DISTRIBUTOR OR HAYES MANUFACTURING FOR FURTHER INFORMATION.



4X 1/2-13 UNC THRU
TORQUE: 60 FT.LBS. (DRY)
40 FT.LBS. (LUBRICATED)



INSTALLATION INSTRUCTIONS

FLYWHEEL MOUNT

- BE SURE FLYWHEEL IS CLEAN AND FREE OF RUST AND DEBRIS.
- INSTALL HEX-FLX DRIVE PLATE TO FLYWHEEL USING PROPER INSTALLATION ORIENTATION (SEE DIAGRAMS)
- HAYES MANUFACTURING RECOMMENDS THE USE OF GRADE 8/CLASS 10.9 FASTENERS, NO LOCK WASHERS, AND CHOICE OF RED OR BLUE THREAD LOCKER. TORQUE BOLTS TO ENGINE MFG. SPECS OR STANDARD TORQUE FOR GRADE/CLASS AND SIZE OF THREAD.

HOUSING MOUNT

- BE SURE ENGINE HOUSING IS CLEAN AND FREE OF RUST AND DEBRIS.
- CHECK TO MAKE SURE DRIVE HUB FITS THROUGH PUMP PILOT BORE OF PUMP MOUNT PLATE.
- IF HEX-FLX HUB FITS THROUGH PUMP PILOT OF MOUNTING PLATE, THEN INSTALL PUMP MOUNT PLATE TO ENGINE.
 - IF HUB DOES NOT FIT THROUGH PUMP PILOT BORE. FOLLOW THE NEXT STEPS, IN THIS ORDER.
 - SEE INSTRUCTIONS FOR PUMP MOUNTING.
 - SEE INSTRUCTIONS FOR DRIVE HUB MOUNTING.
- HAYES MANUFACTURING RECOMMENDS THE USE OF GRADE 5/CLASS 8.8 OR BETTER FASTENER. USE YOUR CHOICE OF WASHERS AND/OR THREAD LOCKER. TORQUE TO ENGINE MFG RECOMMENDATIONS OR USE STANDARD TORQUE FOR GRADE/CLASS AND SIZE OF BOLT.

DRIVE HUB MOUNTING

- BE SURE PUMP SHAFT IS CLEAN AND FREE OF GREASE OR OIL
 - INSTALL HUB ONTO PUMP SHAFT USING PROPER ORIENTATION. (SEE DIAGRAMS)
 - HUB LOCATION IS IMPORTANT TO ENSURE PROPER ASSEMBLY. WHILE MAINTAINING HUB LOCATION, TORQUE SET SCREWS TO 45 FT.LBS.
- WARNING!!!** BE SURE THAT BOTH SET SCREWS ARE OVER THE PUMP SHAFT OR DAMAGE WILL OCCUR TO THE HUB.

PUMP MOUNTING

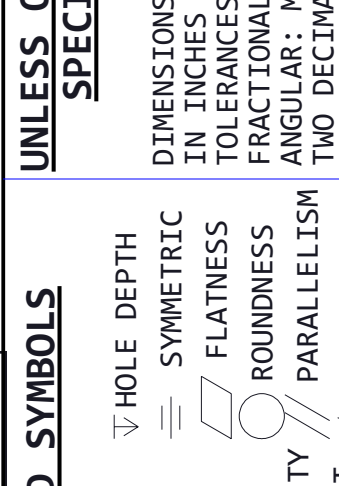
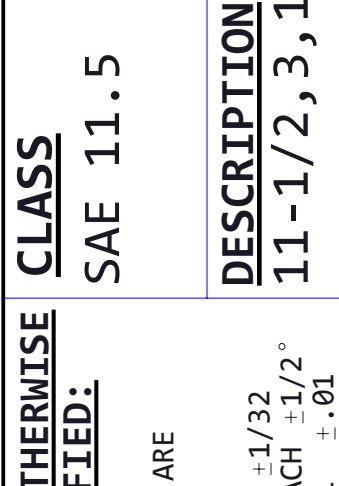
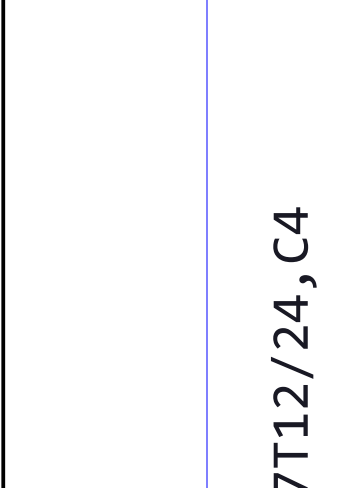
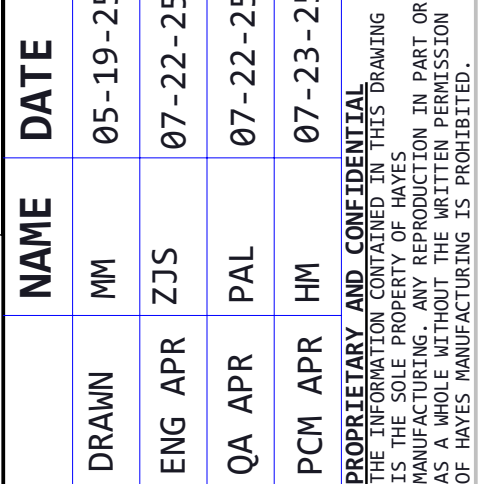
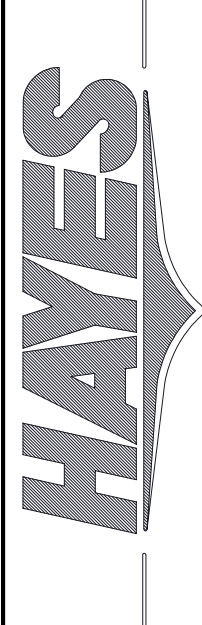
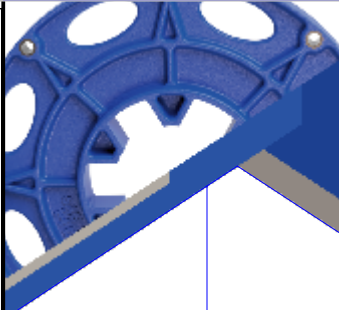
- BE SURE PUMP FACE IS CLEAN AND FREE OF RUST AND DEBRIS.
 - INSTALL PUMP TO PUMP PLATE. INSURE PUMP SITS FLAT AND FULLY AGAINST PUMP MOUNT PLATE FACE.
 - HAYES MANUFACTURING RECOMMENDS THE USE OF GRADE 5/CLASS 8.8 OR BETTER FASTENER. USE YOUR CHOICE OF WASHERS AND/OR THREAD LOCKER. TORQUE TO HAYES MANUFACTURING RECOMMENDATIONS (SEE DIAGRAMS)
- WARNING!!!** BOLTS MUST NOT PROTRUDE THRU PUMP MOUNT PLATE OR DAMAGE MAY OCCUR!

COUPLING IS NOT SERVICEABLE

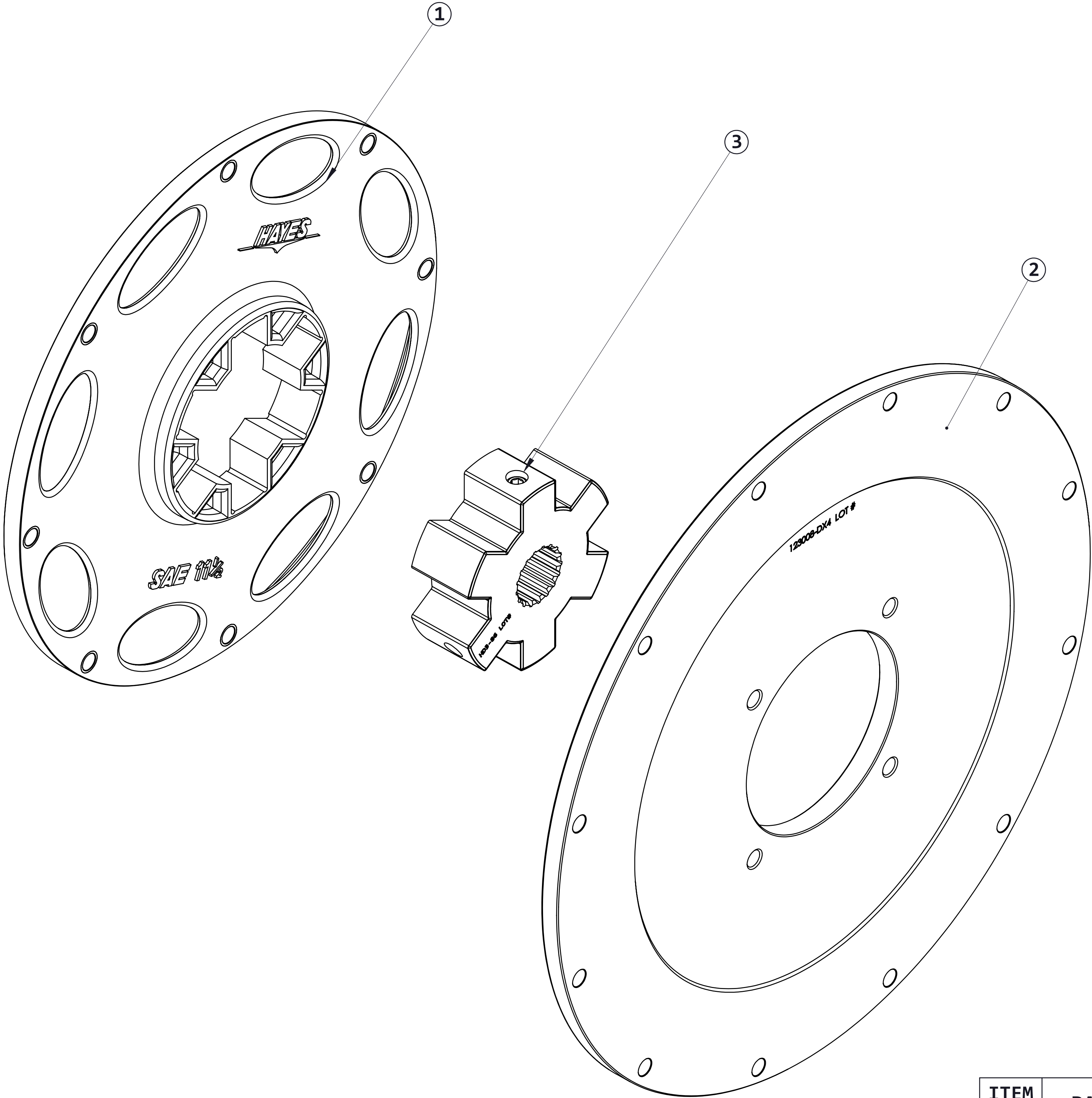
| ITEM NO. | PART NUMBER | DESCRIPTION | QTY |
|----------|-------------|------------------------------|-----|
| 1 | D-115 | SAE 11.5 HEX-FLX DRIVE PLATE | 1 |
| 2 | 123008-DX4 | PUMP MOUNT PLATE | 1 |
| 3 | HD3-86 | HEX-FLX HUB | 1 |

NOT FOR MANUFACTURING PURPOSES

| STANDARD SYMBOLS | | UNLESS OTHERWISE SPECIFIED: | CLASS | NAME | DATE |
|------------------|---------------|-------------------------------|-------------------------|--|------------------|
| COUNTERBORE | ▽ HOLE DEPTH | DIMENSIONS ARE IN INCHES | SAE 11.5 | WM | 05-19-25 |
| COUNTERSINK | ≡ SYMMETRIC | TOLERANCES: FRACTIONAL: ±1/32 | | ZJS | 07-22-25 |
| CONCENTRICITY | ⊕ FLATNESS | ANGULAR: MACH ±1/2° | | QA APR | 07-22-25 |
| TRUE POSITION | ⊖ ROUNDNESS | TWO DECIMAL ±.01 | | PCM APR | 07-23-25 |
| PERPENDICULARITY | ⊥ PARALLELISM | THREE DECIMAL ±.005 | | PROPERTY AND CONFIDENTIALITY OF HAYES MANUFACTURING. ANY REPRODUCTION IN PART OR IN WHOLE WITHOUT THE WRITTEN PERMISSION OF HAYES MANUFACTURING IS PROHIBITED. | |
| CIRCULAR RUN OUT | ⊘ DIAMETER | FOUR DECIMAL ±.0005 | | | |
| TOTAL RUN OUT | "R" RADIUS | | | | |
| | | | DESCRIPTION | TITLE | REV |
| | | | 11-1/2, 3, 17T12/24, C4 | PUMP DRIVE KIT | 05-19-25 |
| | | | WEIGHT | SEE DCR | DRAWING # |
| | | | 43.9 LBS | | D-115-HD3-86-DX4 |
| | | | VOLUME | REV | |
| | | | CU.IN. | | |
| | | | Make | | |

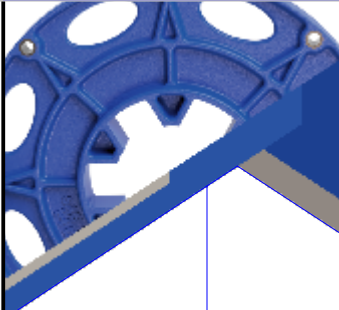


| PUMP DRIVE SPECS | |
|-----------------------|--------------|
| FLYWHEEL | SAE 11.5 |
| HOUSING | SAE 3 |
| PUMP FLANGE | SAE C 4-BOLT |
| PUMP SHAFT | 17T 12/24 |
| HP RATING (@1800 RPM) | TBD |



| ITEM NO. | PART NUMBER | DESCRIPTION | QTY |
|----------|-------------|------------------------------|-----|
| 1 | D-115 | SAE 11.5 HEX-FLX DRIVE PLATE | 1 |
| 2 | 123008-DX4 | PUMP MOUNT PLATE | 1 |
| 3 | HD3-86 | HEX-FLX HUB | 1 |

| STANDARD SYMBOLS | | UNLESS OTHERWISE SPECIFIED: | CLASS | NAME | | DATE | | | |
|------------------|-------------|---|--------------------|--|-----|----------|--------------|--------------|------------------|
| COUNTERBORE | HOLE DEPTH | DIMENSIONS ARE IN INCHES TOLERANCES: FRACTIONAL: $\pm 1/32$ ANGULAR: MACH $\pm 1/2^\circ$ TWO DECIMAL $\pm .01$ THREE DECIMAL $\pm .005$ FOUR DECIMAL $\pm .0005$ | SAE 11.5 | DRAWN | NM | 05-19-25 | | | |
| CONCENTRICITY | SYMMETRIC | | | ENG | APR | ZJS | 07-22-25 | | |
| TRUE POSITION | FLATNESS | | | QA | APR | PAL | 07-22-25 | | |
| PERPENDICULARITY | ROUNDNESS | | | PCM | APR | NM | 07-23-25 | | |
| CIRCULAR RUN OUT | PARALLELISM | | | PROPRIETARY AND CONFIDENTIAL THIS DRAWING IS THE SOLE PROPERTY OF HAYES MANUFACTURING. ANY REPRODUCTION IN PART OR WHOLE WITHOUT THE WRITTEN PERMISSION OF HAYES MANUFACTURING IS PROHIBITED. | | | | | |
| TOTAL RUN OUT | "R" RADIUS | | WEIGHT 43.9 LBS | Make | | SEE DCR | REV | REV DATE | DRAWING # |
| | | | | | | | 0 | 05-19-25 | D-115-HD3-86-DX4 |
| | | | | | | | DO NOT SCALE | SHEET 2 OF 2 | |



TITLE PUMP DRIVE KIT