

CUSTOMER

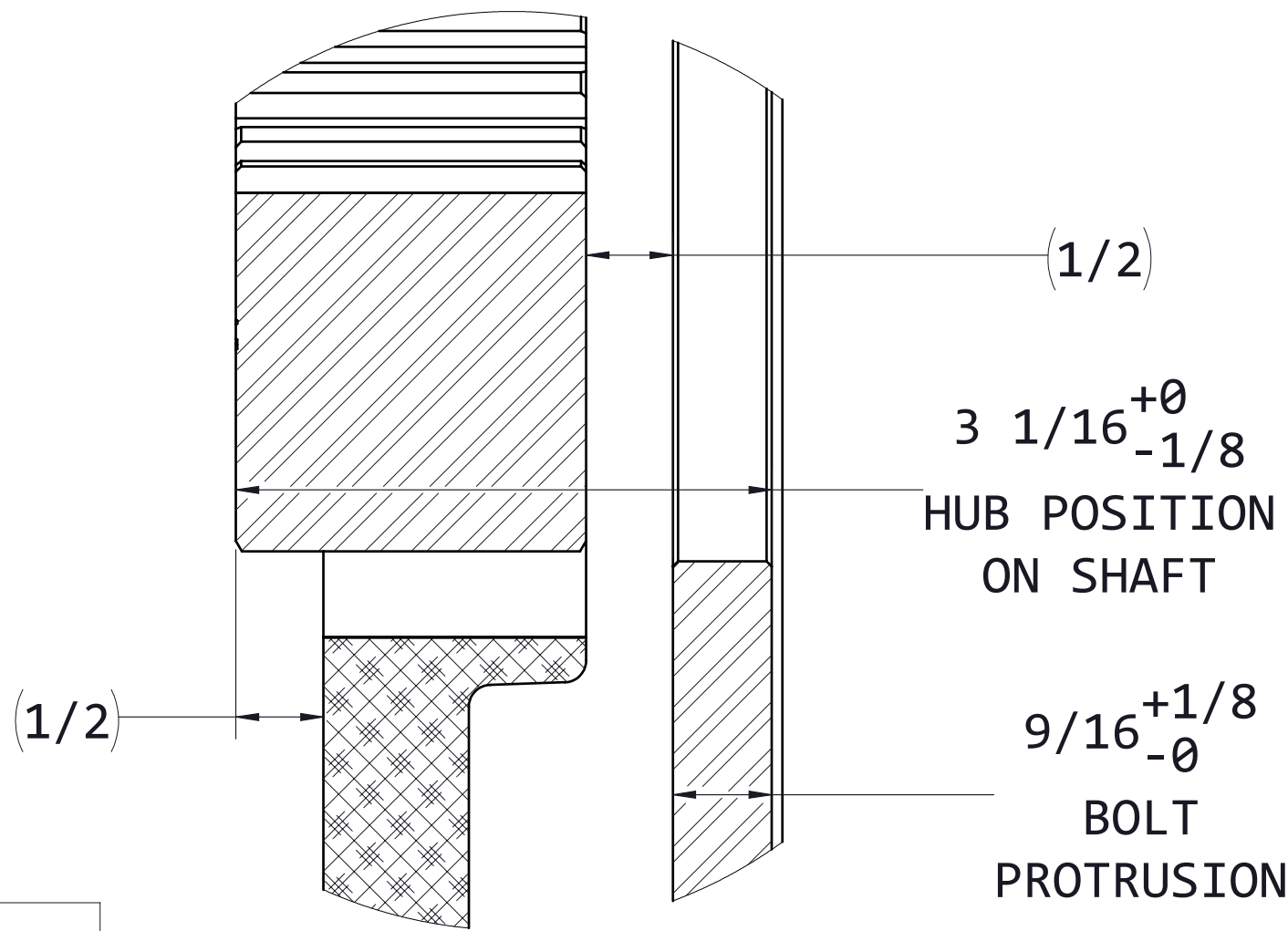
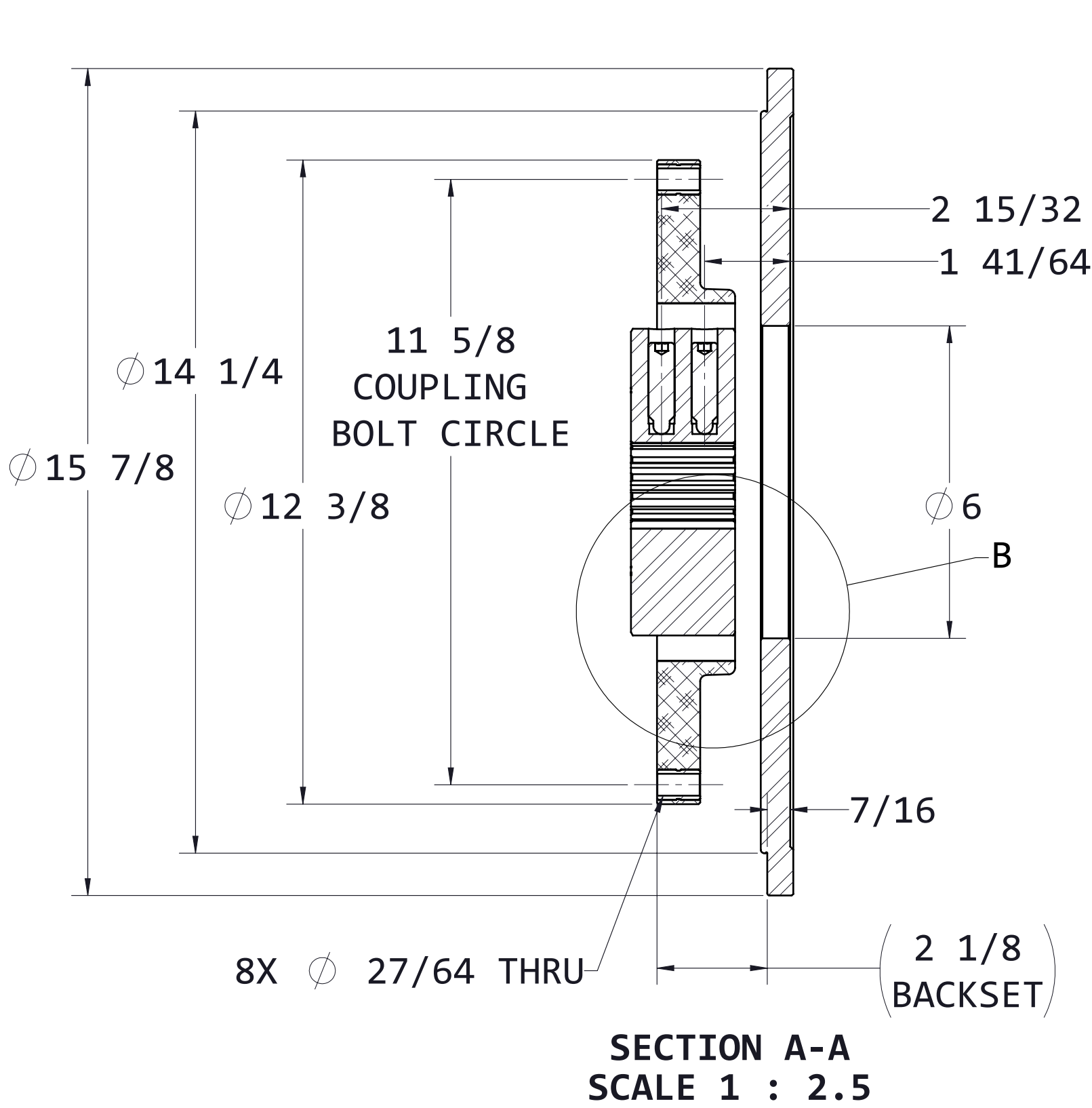
A

B

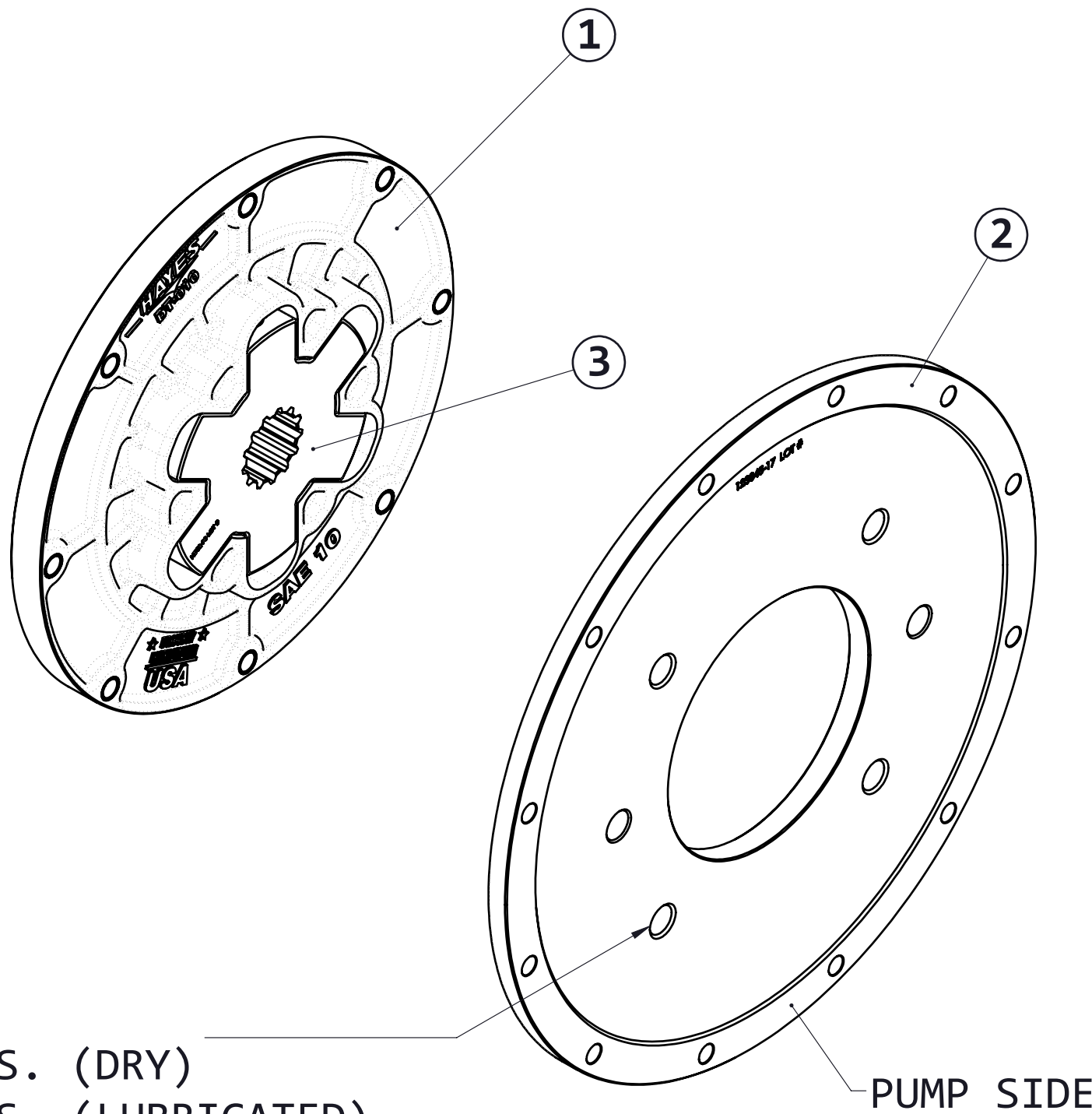
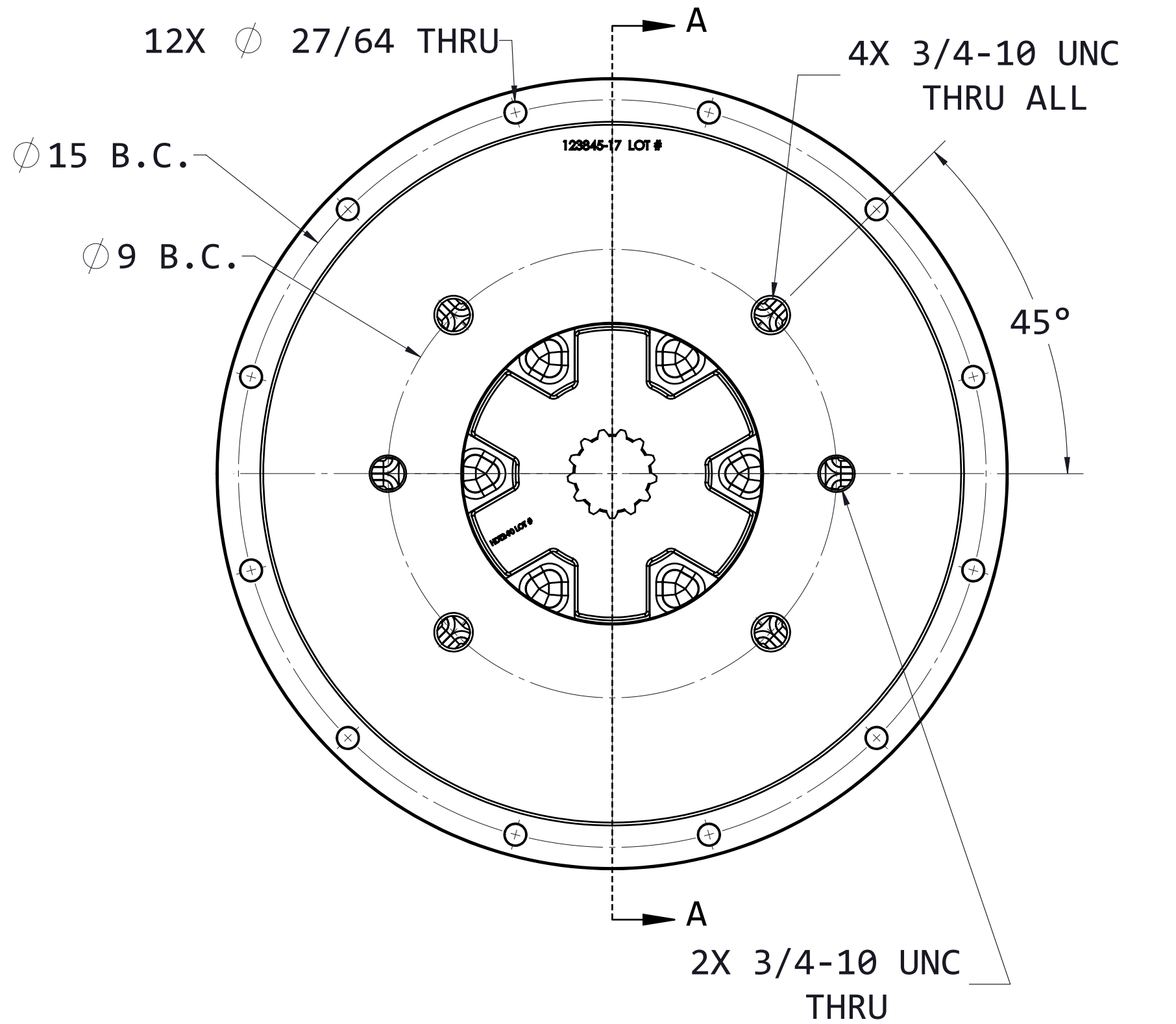
C

D

PUMP DRIVE SPECS	
FLYWHEEL	SAE 10
HOUSING	SAE 3
PUMP FLANGE	SAE D 2&4 BOLT
PUMP SHAFT	13T 8/16
HP RATING (@1800 RPM)	600



6X 3/4-10 UNC THRU ALL  
MAX TORQUE: 80 FT. LBS. (DRY)  
65 FT. LBS. (LUBRICATED)



#### INSTALLATION INSTRUCTIONS

##### FLYWHEEL MOUNT

- BE SURE FLYWHEEL IS CLEAN AND FREE OF RUST AND DEBRIS.
- INSTALL HEX-FLX DRIVE PLATE TO FLYWHEEL USING PROPER INSTALLATION ORIENTATION. (SEE DIAGRAMS)
- HAYES MANUFACTURING RECOMMENDS THE USE OF GRADE 8/CLASS 10.9 FASTENERS, NO LOCK WASHERS, AND CHOICE OF RED OR BLUE THREAD LOCKER. TORQUE BOLTS TO ENGINE MFG. SPECS OR STANDARD TORQUE FOR GRADE/CLASS AND SIZE OF THREAD.

##### PUMP PLATE/HOUSING MOUNT

- BE SURE ENGINE HOUSING IS CLEAN AND FREE OF RUST AND DEBRIS.
- INSTALL PUMP MOUNT PLATE USING PROPER INSTALLATION ORIENTATION. (SEE DIAGRAMS)  
CHECK TO MAKE SURE DRIVE HUB FITS THROUGH PUMP PILOT BORE OF PUMP MOUNT PLATE.  
IF HEX-FLX HUB FITS THROUGH PUMP PILOT OF MOUNTING PLATE, THEN INSTALL PUMP MOUNT PLATE TO ENGINE.
  - IF HUB DOES NOT FIT THROUGH PUMP PILOT BORE. FOLLOW THE NEXT STEPS, IN THIS ORDER.
  - SEE INSTRUCTIONS FOR PUMP MOUNTING.
  - SEE INSTRUCTIONS FOR DRIVE HUB MOUNTING.
- HAYES MANUFACTURING RECOMMENDS THE USE OF GRADE 5/CLASS 8.8 OR BETTER FASTENER. USE YOUR CHOICE OF WASHERS AND/OR THREAD LOCKER. TORQUE TO ENGINE MFG RECOMMENDATIONS OR USE STANDARD TORQUE FOR GRADE/CLASS AND SIZE OF BOLT.

##### DRIVE HUB MOUNTING

- BE SURE PUMP SHAFT IS CLEAN AND FREE OF GREASE OR OIL
- INSTALL HUB ONTO PUMP SHAFT USING PROPER ORIENTATION. (SEE DIAGRAMS)
- HUB LOCATION IS IMPORTANT TO ENSURE PROPER ASSEMBLY. WHILE MAINTAINING HUB LOCATION, TORQUE SET SCREWS TO 45 FT.LBS.

**WARNING!!!** BE SURE THAT BOTH SET SCREWS ARE OVER THE PUMP SHAFT OR DAMAGE WILL OCCUR TO THE HUB.

##### PUMP MOUNTING

- BE SURE PUMP FACE IS CLEAN AND FREE OF RUST AND DEBRIS.
- INSTALL PUMP TO PUMP PLATE. INSURE PUMP SITS FLAT AND FULLY AGAINST PUMP MOUNT PLATE FACE.
- HAYES MANUFACTURING RECOMMENDS THE USE OF GRADE 5/CLASS 8.8 OR BETTER FASTENER. USE YOUR CHOICE OF WASHERS AND/OR THREAD LOCKER. TORQUE TO HAYES MANUFACTURING RECOMMENDATIONS. (SEE DIAGRAMS)

**WARNING!!!** BOLTS MUST NOT PROTRUDE THRU PUMP MOUNT PLATE OR DAMAGE MAY OCCUR!

##### WARNINGS!!!

IMPROPER INSTALLATION OF HUB COULD CAUSE PREMATURE WEAR AND/OR FAILURE.

IF YOU HAVE QUESTIONS CONCERNING LOCATION OF METAL HUB ON PUMP SHAFT OR ANY INSTALLATION PROCEDURES, PLEASE CONTACT DISTRIBUTOR OR HAYES MANUFACTURING FOR FURTHER INFORMATION.

ITEM NO.	PART NUMBER	DESCRIPTION	QTY
1	DT-010	SAE 10 DRIVE PLATE	1
2	123845-17	PUMP MOUNT PLATE	1
3	HDT2-90	HEX-FLX HUB	1

NOT FOR MANUFACTURING PURPOSES

STANDARD SYMBOLS		UNLESS OTHERWISE SPECIFIED:		CLASS	NAME		DATE
COUNTERBORE		DIMENSIONS ARE IN INCHES		SAE 10	VHA	DATE	06-16-25
COUNTERSINK		TOLERANCES:			DRAWN		
CONCENTRICITY		FRACTIONAL: $\pm 1/32$			ENG	ZJS	06-30-25
TRUE POSITION		ANGULAR: MACH $\pm 1/2^\circ$			QA	PAL	07-10-25
PERPENDICULARITY		TWO DECIMAL $\pm .01$			PCM	APR	07-14-25
CIRCULAR RUN OUT		THREE DECIMAL $\pm .005$			PROPRIETARY AND CONFIDENTIAL HAYES MANUFACTURING, ANY REPRODUCTION IN PART OR IN WHOLE, WITHOUT THE WRITTEN PERMISSION OF HAYES MANUFACTURING IS PROHIBITED.		
TOTAL RUN OUT		FOUR DECIMAL $\pm .0005$					
				DESCRIPTION	TITLE		
				10, 3, 13T8/16, DS24	HEX-FLX PUMP DRIVE KIT		
				WEIGHT	SEE DCR	REV	REV DATE
				37.8 LBS		0	06-16-25
				VOLUME	DRAWING #		
				CU.IN.	DT-010-HDT2-90-DS24		
					DO NOT SCALE		
					SHEET 1 OF 2		