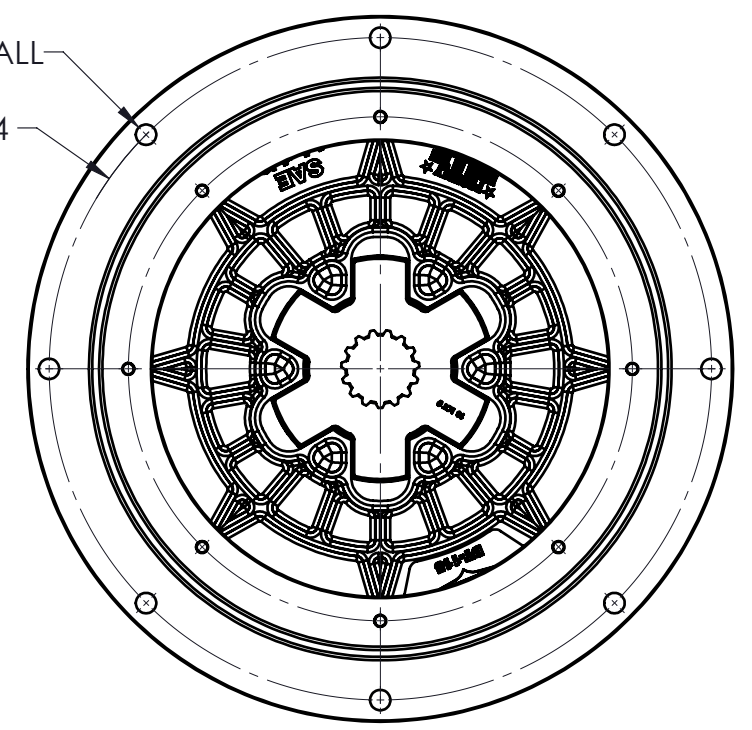
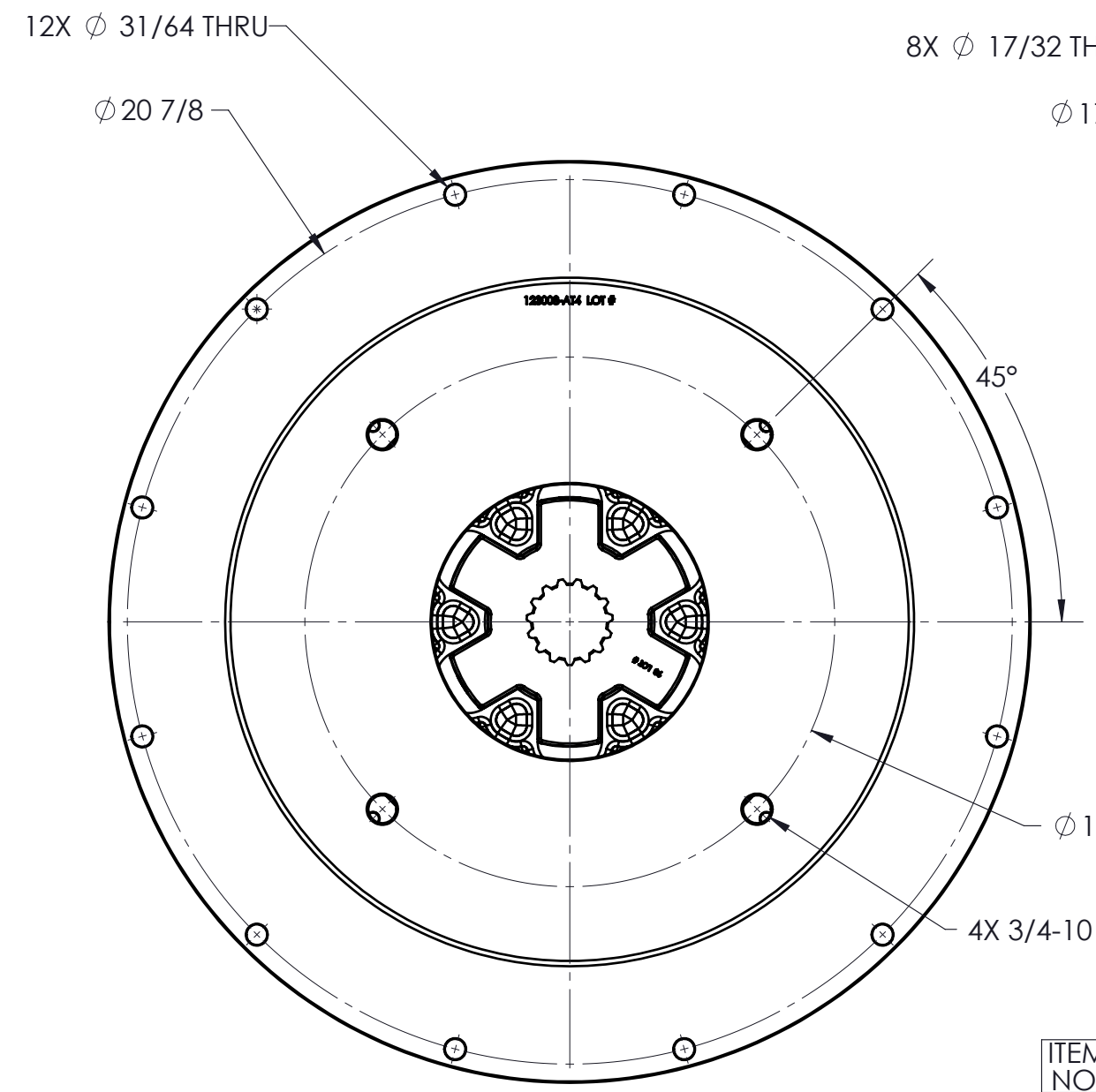
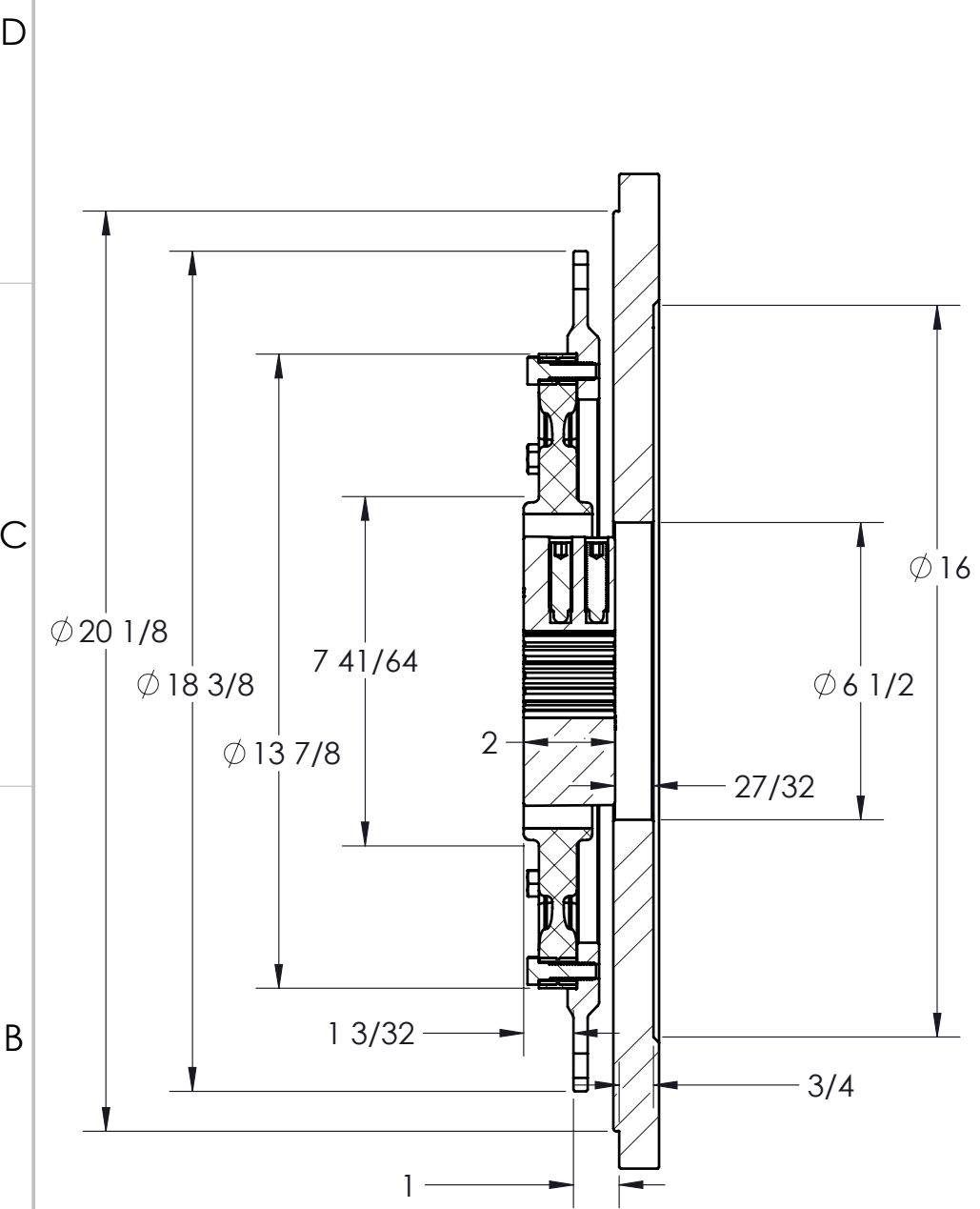


CUSTOMER DRAWING

REVISIONS				
ZONE	REV.	DESCRIPTION	DATE	APR 1   APR 2



ITEM NO.	PART NUMBER	DESCRIPTION	QTY.
1	DT-014	SAE 14 HEX-FLX DRIVE PLATE	1
2	HDT2-93	HEX-FLX HUB	1
3	123008-AT4	PUMP MOUNT PLATE	1

PUMP DRIVE SPECS	
FLYWHEEL	SAE 14
HOUSING	SAE 1
PUMP FLANGE	SAE E 4-BOLT
PUMP SHAFT	15T 8/16 "F"
HP RATING (@1800 RPM)	3300 FT.LBS (MAX)

UNLESS OTHERWISE SPECIFIED:		
DIMENSIONS ARE IN INCHES		
TOLERANCES:		
FRACTIONAL: $\pm 1/32$	DECIMAL: $\pm 0.01$	ANGULAR: MACH $\pm 1/2^\circ$
TWO DECIMAL: $\pm 0.01$	THREE DECIMAL: $\pm 0.005$	FOUR DECIMAL: $\pm 0.0005$
CLASS	WEIGHT	HEAT TREAT
SAE 14	116.8 LB	
DESCRIPTION	VOLUME	FINISH
14,1,15T8/16,E4	CU.IN.	

**PROPRIETARY AND CONFIDENTIAL**  
 THE INFORMATION CONTAINED IN THIS DRAWING IS THE SOLE PROPERTY OF HAYES MANUFACTURING. ANY REPRODUCTION IN PART OR AS A WHOLE WITHOUT THE WRITTEN PERMISSION OF HAYES MANUFACTURING IS PROHIBITED.

NAME	DATE
SIETING	2/8/2023
DRAWN	
PCM APPR.	
ENG APPR.	
SHIP. APPR.	
QA APPR.	
MATERIAL	

**HAYES**

TITLE: **HEX-FLX PUMP DRIVE KIT**

DWG. NO. **DT-014-HDT2-93-AT4** REV

DO NOT SCALE SHEET 1 OF 4