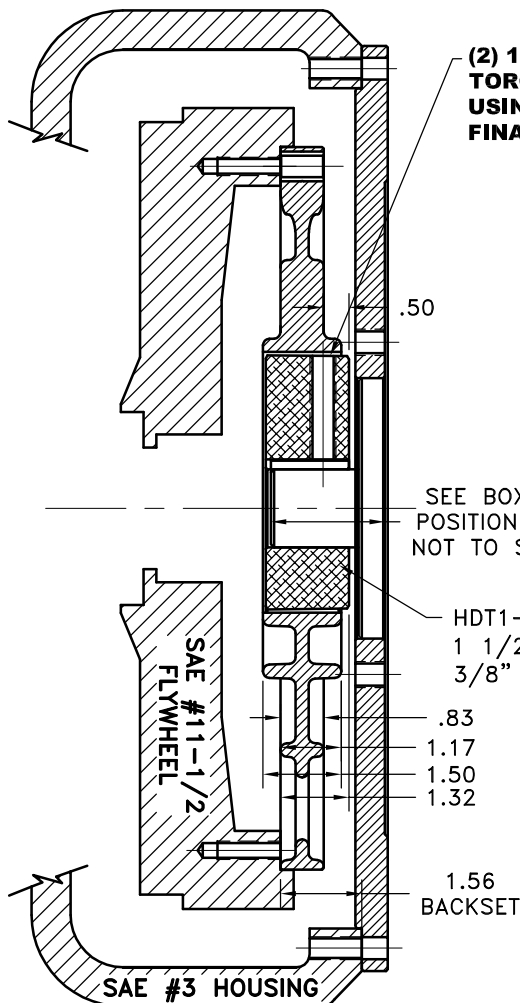


REV	DATE	CHANGE DESCRIPTION	MOD. BY	CK1	CK2

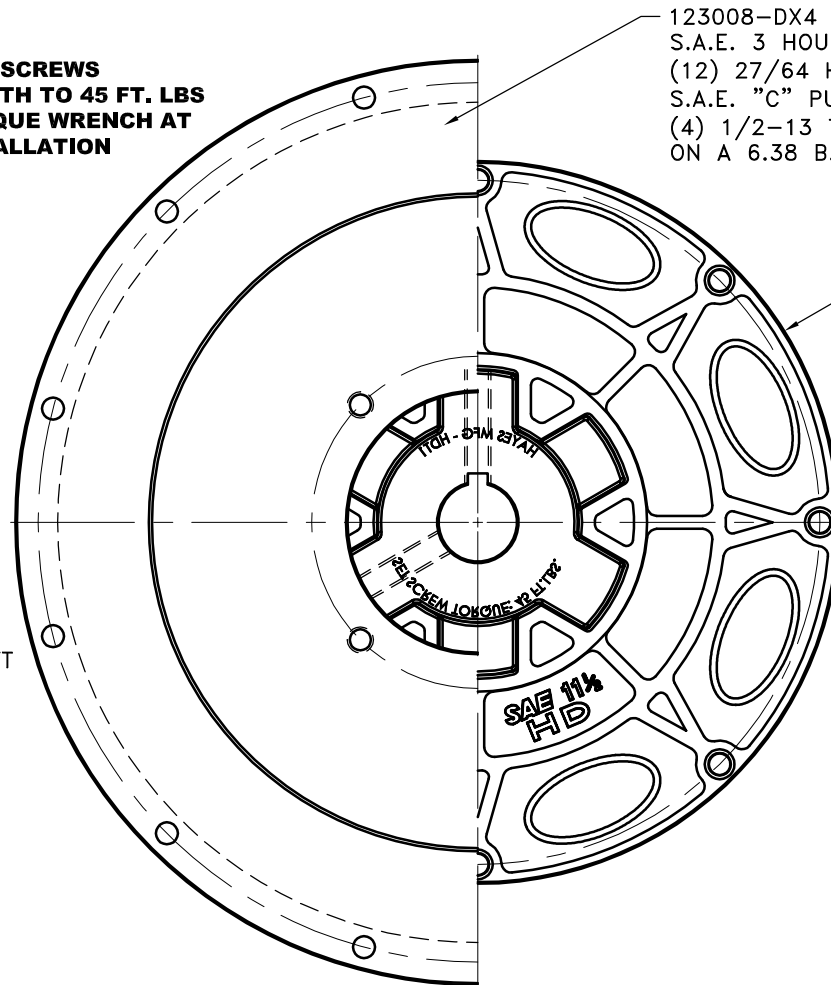


**(2) 1/2" SET SCREWS  
TORQUE BOTH TO 45 FT. LBS  
USING TORQUE WRENCH AT  
FINAL INSTALLATION**

SEE BOX TO  
POSITION HUB  
NOT TO SCALE

HDT1-19  
1 1/2" SHAFT  
3/8" KEY

.83  
1.17  
1.50  
1.32  
  
1.56  
BACKSET



123008-DX4  
S.A.E. 3 HOUSING MOUNT, 16.13 PILOT  
(12) 27/64 HOLES ON A 16.88 B.C.  
S.A.E. "C" PUMP MOUNT, 5.00 PILOT  
(4) 1/2-13 TAPPED HOLES  
ON A 6.38 B.C.

DT-115  
13.874 O.D.  
(8) .406 HOLES  
ON 13.125 B.C.

**IMPORTANT INSTALLATION NOTE!!!!**

**IMPROPER INSTALLATION OF HUB COULD CAUSE  
PREMATURE WEAR AND OR FAILURE.**

**IF YOU HAVE QUESTIONS CONCERNING LOCATION  
OF METAL HUB ON PUMP SHAFT PLEASE CONTACT  
DISTRIBUTOR OR FACTORY FOR FURTHER  
INFORMATION.**

**ALL SET SCREWS MUST BE PROPERLY TORQUED  
TO 45 FT.LBS. USING TORQUE WRENCH. PLEASE  
CONTACT DISTRIBUTOR OR FACTORY FOR ANY  
FURTHER QUESTIONS.**

**DT TORQUE RANGE**  
NOMINAL: 1,300 FT.LBS  
MAX: 3,300 FT.LBS  
NOMINAL: 1,800 NM  
MAX: 4,500 NM

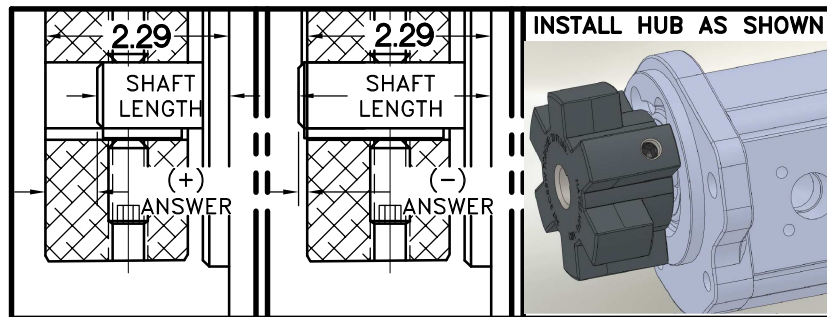
**NOTE: REMOVE HUB FROM ASS'Y, PRESET HUB ON SHAFT  
AS SHOWN. TORQUE BOTH SET SCREWS TO 45 FT.LBS.  
USING TORQUE WRENCH. SHAFT SHOULD HAVE A  
MINIMUM OF 3/4" OF ENGAGEMENT IF NOT CONTACT  
FACTORY FOR RECOMMENDATIONS (231) 879-3372 TO  
GET HUB PRESET USE THIS EQUATION:**

**PERFORM CALCULATION BELOW:**

**2.29- SHAFT LENGTH - HUB PRESET**

**IF YOUR ANSWER IS (+) SHAFT IS INSIDE OF HUB, IF  
YOUR ANSWER IS (-) SHAFT STICKS OUT OF HUB.  
(SEE BOXES)**

**NOTE: THIS STEP IS IMPORTANT TO  
ENSURE FULL SHAFT ENGAGEMENT.**



DET.	PART NUMBER	DESCRIPTION	QTY.
3	123008-DX4	PUMP MOUNT PLATE	1
2	HDT1-19	DT SERIES DRIVE HUB	1
1	DT-115	SAE 11 1/2 HEX~FLX PLATE	1

SYMBOLS		DET.		PART NUMBER		DESCRIPTION		QTY.
	FLATNESS	DO NOT SCALE						
	STRAIGHTNESS	DRAWING						
	ANGULARITY	TOLERANCES UNLESS						
	PERPENDICULARITY	OTHERWISE SPECIFIED						
	PARALLELISM	125 MAXIMUM						
	CONCENTRICITY	ANGLE ±1/2°						
	TRUE POSITION	FRACTION ±1/32						
	ROUNDNESS	DECIMAL						
	CIRCULAR RUN OUT	.00 ±.01						
	TOTAL RUN OUT	.000 ±.005						
	CYLINDRICITY	.0000 ±.0005						
	FINISH							
CLASS		MAKE: <input checked="" type="checkbox"/>	BUY: <input type="checkbox"/>	DRAWN BY		DATE		DRAWING NO.
SAE 11.5				SIETING		08-12-2015		DT-115-HDT1-19-DX4
DESCRIPTION		11-1/2,3,1-1/2x3/8,C4		CHECKED BY		SCALE		SHEET OF REV.



TITLE  
DT SERIES HEX-FLX PUMP DRIVE KIT

MATERIAL

DRAWN BY  
DATE  
08-12-2015

CHECKED BY  
SCALE

DRAWING NO.  
DT-115-HDT1-19-DX4  
SHEET OF REV.