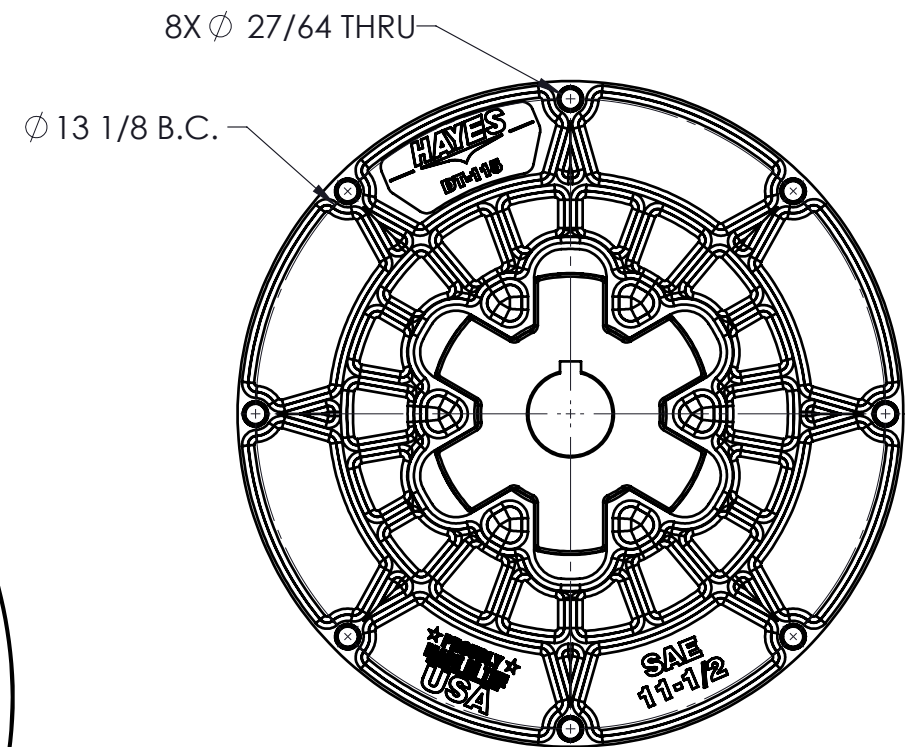
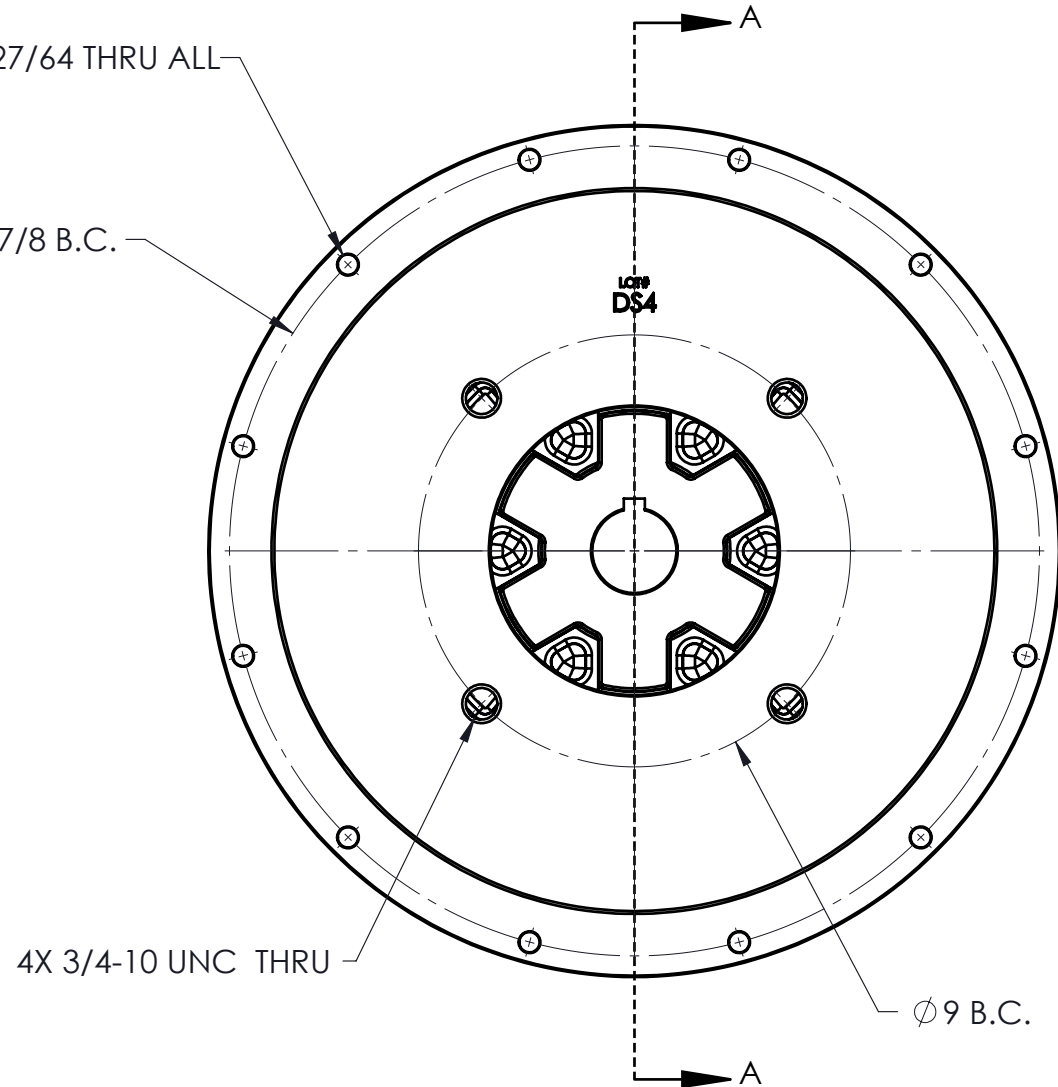
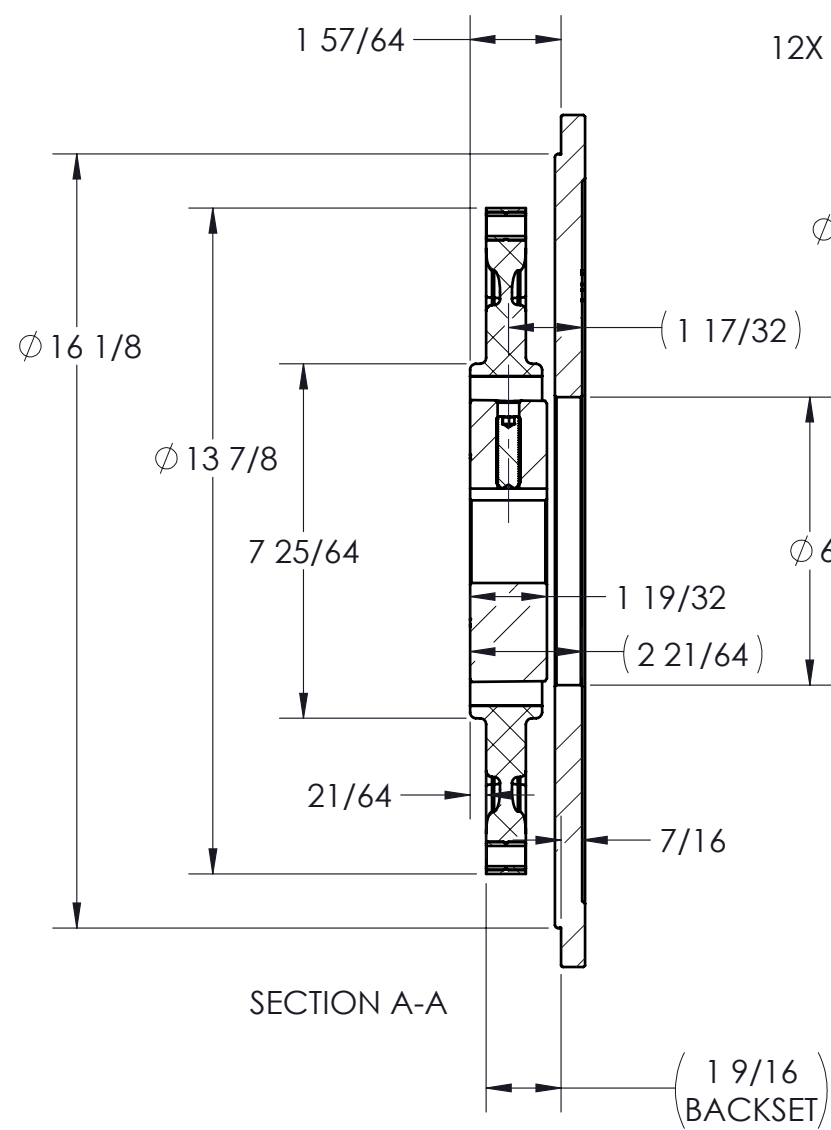


CUSTOMER DRAWING

REVISIONS						
ZONE	REV.	DESCRIPTION	DATE	APR 1	APR 2	DCR #
	B	RELEASED IN SOLIDWORKS	09/27/23	ZS		



COUPLING IS NOT SERVICABLE

PUMP DRIVE SPECS	
FLYWHEEL	SAE 11.5
HOUSING	SAE 3
PUMP FLANGE	SAE D 4-BOLT
PUMP SHAFT	1-3/4" SHAFT, 7/16" KEY
HP RATING (@1800 RPM)	3300 FT.LBS (MAX)

PROPRIETARY AND CONFIDENTIAL

THE INFORMATION CONTAINED IN THIS DRAWING IS THE SOLE PROPERTY OF HAYES MANUFACTURING. ANY REPRODUCTION IN PART OR AS A WHOLE WITHOUT THE WRITTEN PERMISSION OF HAYES MANUFACTURING IS PROHIBITED.

UNLESS OTHERWISE SPECIFIED: DIMENSIONS ARE IN INCHES TOLERANCES: FRACTIONAL: \pm 1/32 ANGULAR: MACH \pm 1/2° TWO DECIMAL: \pm 0.01 THREE DECIMAL: \pm 0.005 FOUR DECIMAL: \pm 0.0005		SYMBOLS		COUNTERBORE COUNTERSINK HOLE DEPTH SYMMETRIC	
FLATNESS	CONCENTRICITY	PERPENDICULARITY	CIRCULAR RUN OUT	TOTAL RUN OUT	
ROUNDNESS	TRUE POSITION	PERPENDICULARITY	CIRCULAR RUN OUT	TOTAL RUN OUT	
PARALLELISM	PERPENDICULARITY	CIRCULAR RUN OUT	TOTAL RUN OUT		
DIAMETER	CIRCULAR RUN OUT	TOTAL RUN OUT			
"R" RADIUS	TOTAL RUN OUT				
CLASS	SAE 11.5	DESCRIPTION	11-1/2, 3, 1-3/4x7/16, D4	MAKE	WEIGHT
BUY	X	BUY	45.1 LB	VOLUME	CU.IN.
HEAT TREAT		FINISH			

ITEM NO.	PART NUMBER	DESCRIPTION	QTY.
1	DT-115-QA	DRIVE PLATE	1
2	HDT1-46	DT HEX-FLX HUB	1
3	123008-DS4	PUMP MOUNT PLATE	1

NAME	DATE
DRAWN	SIETING 06/29/22
PCM APPR.	
ENG APPR.	ZS 09/27/23
SHIP. APPR.	
QA APPR.	
MATERIAL	

TITLE:		DWG. NO.		REV
HAYES		DT-115-HDT1-46-DS4		B
DO NOT SCALE		SHEET 1 OF 4		

5

4

3

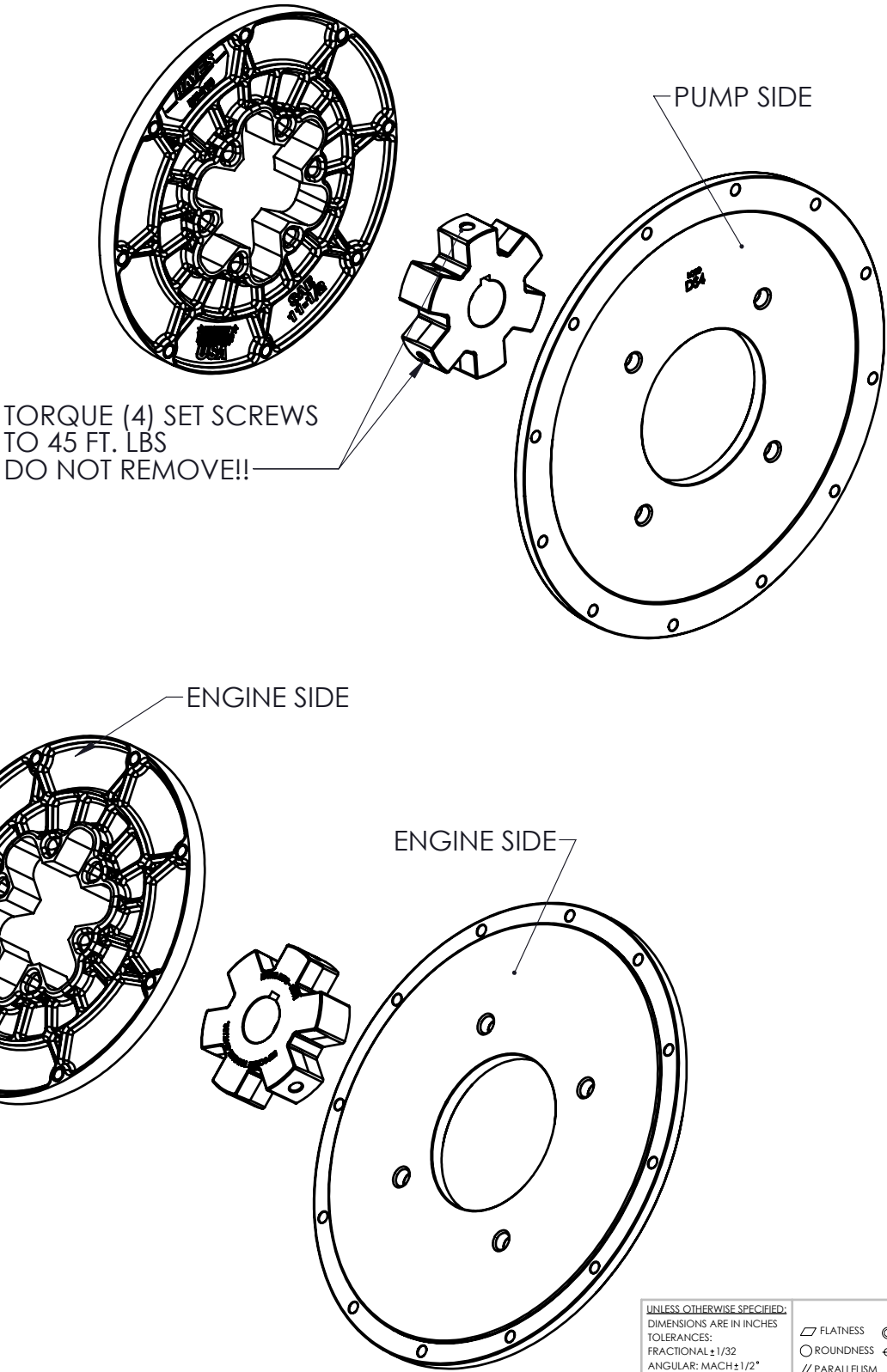
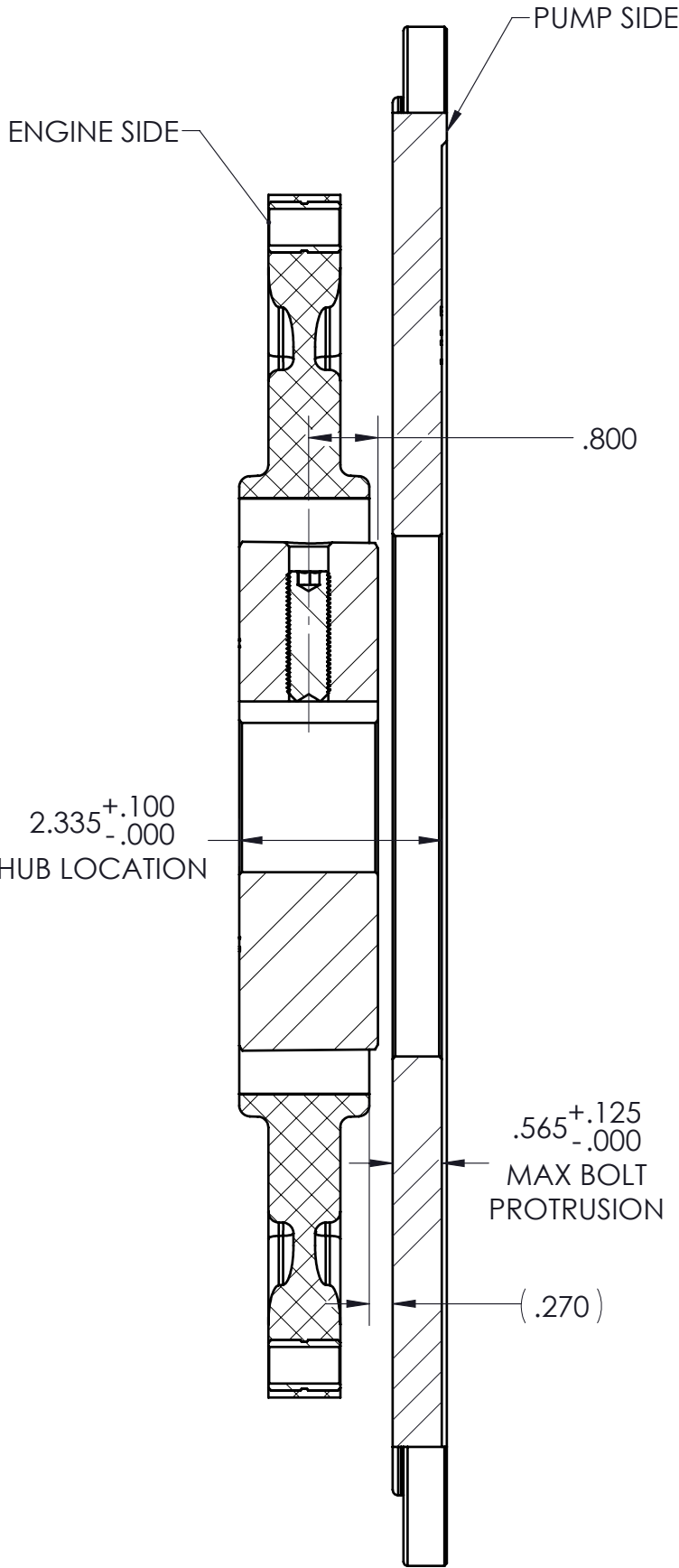
2

1

INSTALLATION DRAWING

REVISIONS

ZONE	REV.	DESCRIPTION	DATE	APR 1	APR 2
-	-	SEE CUSTOMER	-	-	-



INSTALLATION INSTRUCTIONS

FLYWHEEL MOUNT

- BE SURE FLYWHEEL IS CLEAN AND FREE OF RUST AND DEBRIS.
- INSTALL DRIVE PLATE TO FLYWHEEL USING PROPER INSTALLATION ORIENTATION. (SEE DIAGRAMS)
- FASTENERS ARE SUPPLIED BY END USER/INSTALLER. HAYES MANUFACTURING RECOMMENDS THE USE OF GRADE 8/CLASS 10.9 FASTENERS, NO WASHERS, AND CHOICE OF RED OR BLUE THREAD LOCKER. TORQUE BOLTS TO ENGINE MFG. SPECS OR STANDARD TORQUE FOR GRADE/CLASS AND SIZE OF THREAD.

PUMP PATE MOUNT

- BE SURE ENGINE HOUSING IS CLEAN AND FREE OF RUST, PAINT, AND DEBRIS
- INSTALL PUMP MOUNT PLATE USING PROPER INSTALLATION ORIENTATION. (SEE DIAGRAMS)
- FASTENERS ARE SUPPLIED BY END USER/INSTALLER. HAYES MANUFACTURING RECOMMENDS THE USE OF GRADE 5/CLASS 8.8 FASTENERS AND YOUR CHOICE OF WASHERS AND THREAD LOCKER. TORQUE BOLTS TO ENGINE MFG. SPECS OR STANDARD FOR GRADE/CLASS AND SIZE OF THREAD.

PUMP INSTALLATION

- BE SURE PUMP MOUNT SURFACE IS CLEAN AND FREE OF PAINT, RUST AND DEBRIS.
- APPLY SUPPLIED SPLINE GREASE TO INTERNAL AND EXTERNAL SPLINES.
- INSTALL PUMP TO PUMP MOUNT PLATE. BE SURE PUMP SEATS FULLY AGAINST MACHINED PUMP MOUNT FACE.
- FASTENERS ARE SUPPLIED BY END USER. HAYES MANUFACTURING RECOMMENDS THE USE OF GRADE 5/CLASS 8.8 OR BETTER FASTENERS. YOUR CHOICE OF WASHERS AND THREAD LOCKER. TORQUE BOLTS TO HAYES RECOMENDATIONS. (SEE DIAGRAM).
- **WARNING!!!!** BE SURE BOLTS DO NOT PROTRUDE THROUGH PUMP PLATE AND INTERFERE WITH FLYWHEEL COUPLING. FAILURE TO CHECK MAY RESULT IN DAMAGE TO FLYWHEEL COUPLING AND OTHER COMPONENTS.

WARNINGS!!!

IMPROPER INSTALLATION COULD CAUSE PREMATURE WEAR AND/OR FAILURE.

DO NOT DISASSEMBLE FLYWHEEL COUPLING. DISASSEMBLY OR REMOVAL OF ANY COMPONENT MAY VOID THE WARRANTY

IF YOU HAVE QUESTIONS CONCERNING INSTALLATION OR USE OF THIS DRIVE SYSTEM, PLEASE CONTACT DISTRIBUTOR OR HAYES MANUFACTURING FOR FURTHER INFORMATION.

UNLESS OTHERWISE SPECIFIED:
DIMENSIONS ARE IN INCHES
TOLERANCES:
FRACTIONAL: ±1/32
ANGULAR: MACH ±1/2°
TWO DECIMAL ±.01
THREE DECIMAL ±.005
FOUR DECIMAL ±.0005

SYMBOLS
□ FLATNESS
○ ROUNDNESS
// PARALLELISM
∅ DIAMETER
"R" RADIUS
◎ CONCENTRICITY
⊕ TRUE POSITION
⊥ PERPENDICULARITY
⌒ CIRCULAR RUN OUT
⌒ TOTAL RUN OUT
┌ COUNTERBORE
└ COUNTERSINK
▽ HOLE DEPTH
≡ SYMMETRIC

CLASS	SAE 11.5
DESCRIPTION	11-1/2,3,1-3/4x7/16,D4
MAKE	X
WEIGHT	45.1 LB
BUY	VOLUME
	CU.IN.
HEAT TREAT	
FINISH	

NAME	DATE
DRAWN	SIETING 06/29/22
PCM APPR.	
ENG APPR.	ZS 09/27/23
SHIP. APPR.	
QA APPR.	
MATERIAL	



TITLE: HEX-FLX PUMP DRIVE KIT

DWG. NO. DT-115-HDT1-46-DS4

REV B

DO NOT SCALE

SHEET 2 OF 4

5

4

3

2

1