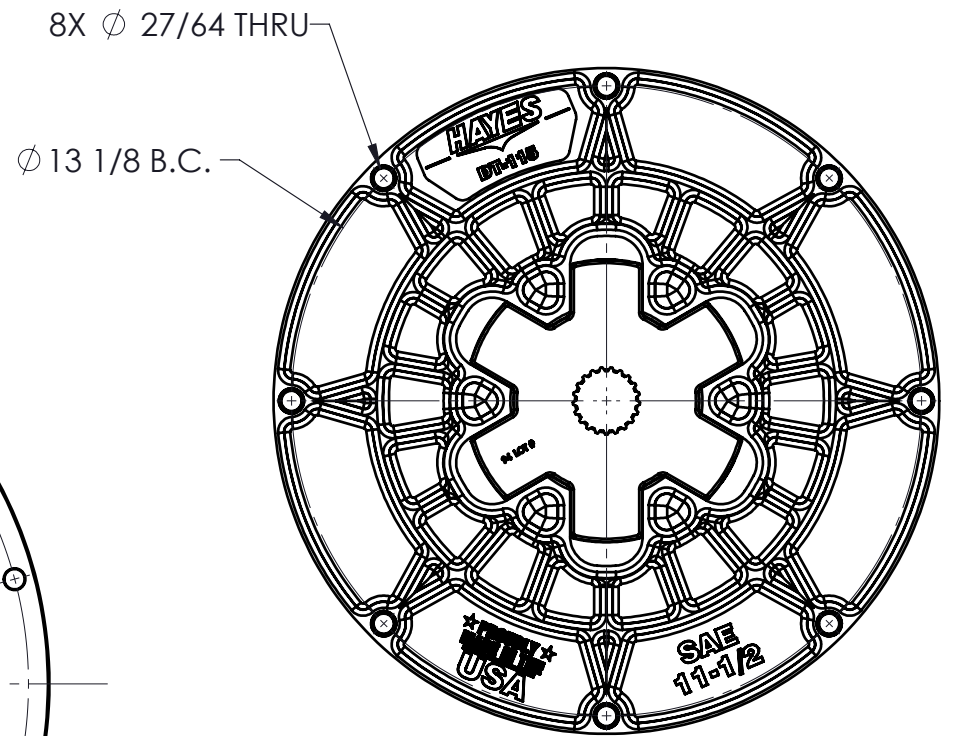
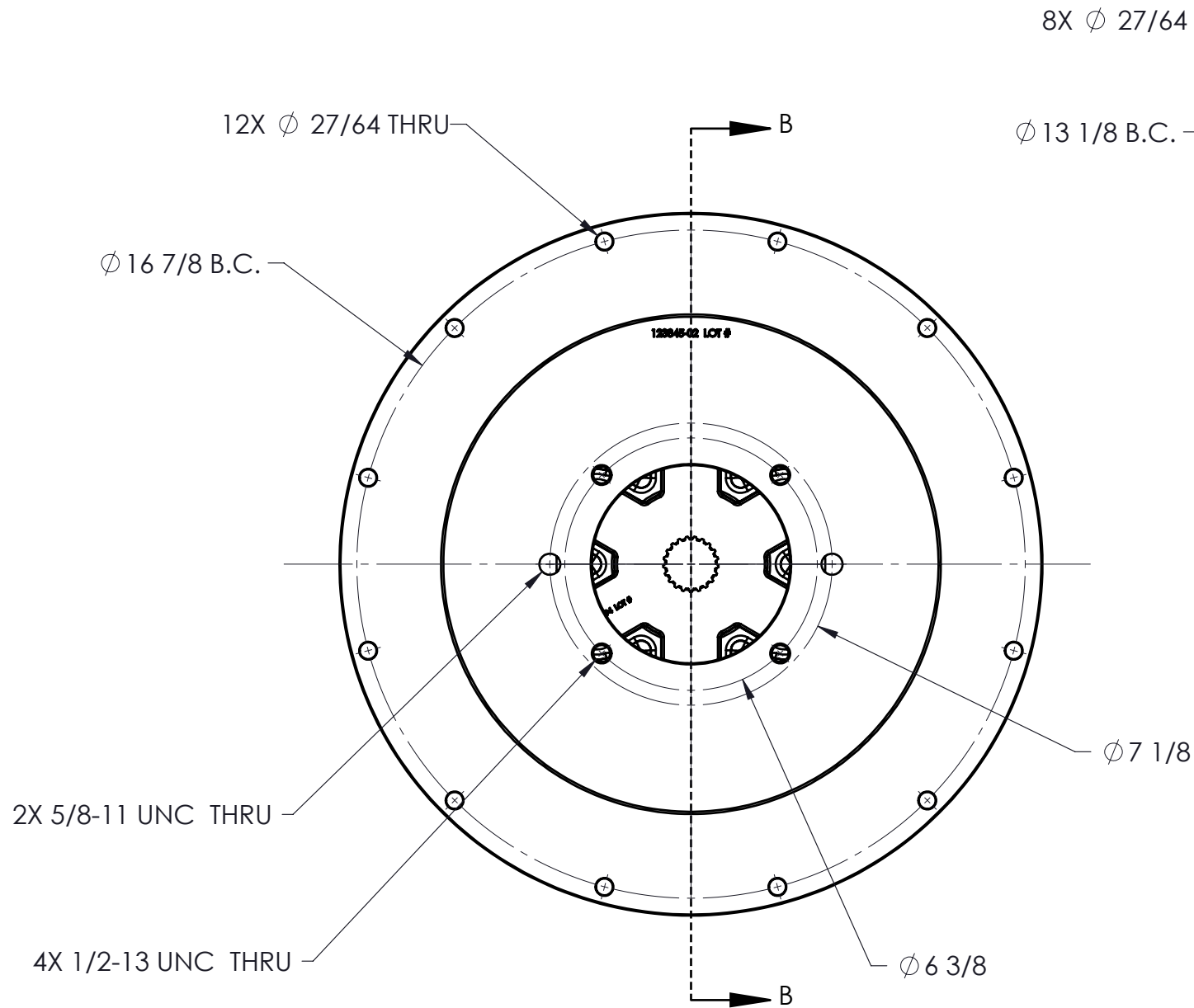
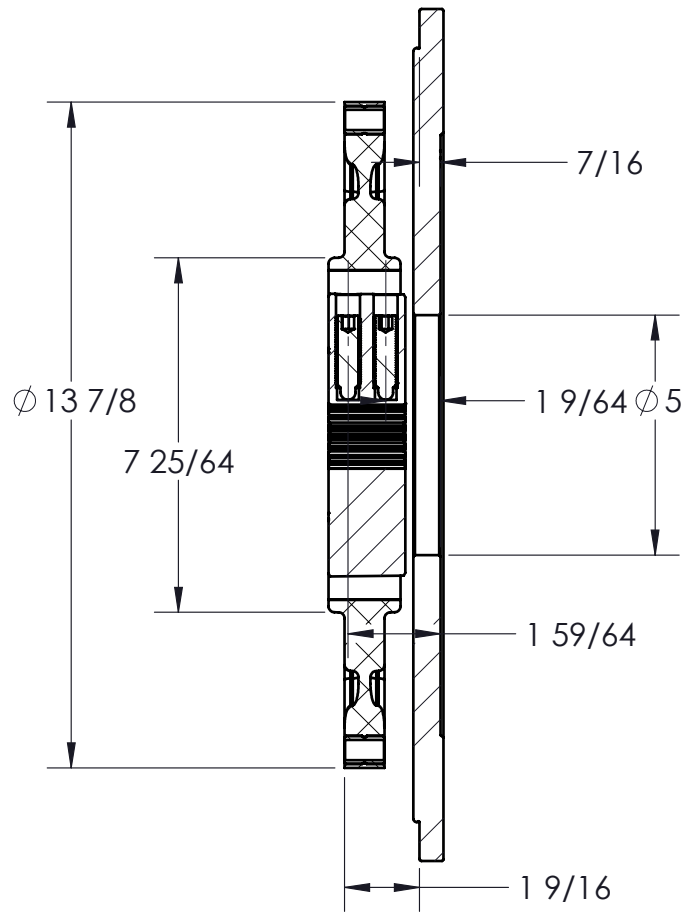


CUSTOMER DRAWING

REVISIONS					
ZONE	REV.	DESCRIPTION	DATE	APR 1	APR 2



COUPLING IS NOT SERVICABLE

PUMP DRIVE SPECS	
FLYWHEEL	SAE 11.5
HOUSING	SAE 3
PUMP FLANGE	SAE C 2&4-BOLT
PUMP SHAFT	21T 16/32
HP RATING (@1800 RPM)	600

PROPRIETARY AND CONFIDENTIAL

THE INFORMATION CONTAINED IN THIS DRAWING IS THE SOLE PROPERTY OF HAYES MANUFACTURING. ANY REPRODUCTION IN PART OR AS A WHOLE WITHOUT THE WRITTEN PERMISSION OF HAYES MANUFACTURING IS PROHIBITED.

UNLESS OTHERWISE SPECIFIED:
DIMENSIONS ARE IN INCHES
TOLERANCES:
FRACTIONAL $\pm 1/32$
ANGULAR $MACH \pm 1/2^\circ$
TWO DECIMAL ± 0.01
THREE DECIMAL ± 0.005
FOUR DECIMAL ± 0.0005

SYMBOLS

FLATNESS, ROUNDNESS, PARALLELISM, DIAMETER, RADIUS, CONCENTRICITY, TRUE POSITION, PERPENDICULARITY, CIRCULAR RUN OUT, TOTAL RUN OUT, COUNTERBORE, COUNTERSINK, HOLE DEPTH, SYMMETRIC

CLASS	SAE 11.5	
DESCRIPTION	11-1/2,3,21T16/32,C24	
MAKE	WEIGHT	HEAT TREAT
X	LB	
BUY	VOLUME	FINISH
	CU.IN.	

	NAME	DATE
DRAWN	VHA	6/29/2022
PCM APPR.		
ENG APPR.		
SHIP. APPR.		
QA APPR.		
MATERIAL		

HAYES

TITLE: HEX-FLX PUMP DRIVE KIT

DWG. NO. DT-115-HDT1-94-DX24

REV

DO NOT SCALE

SHEET 1 OF 4