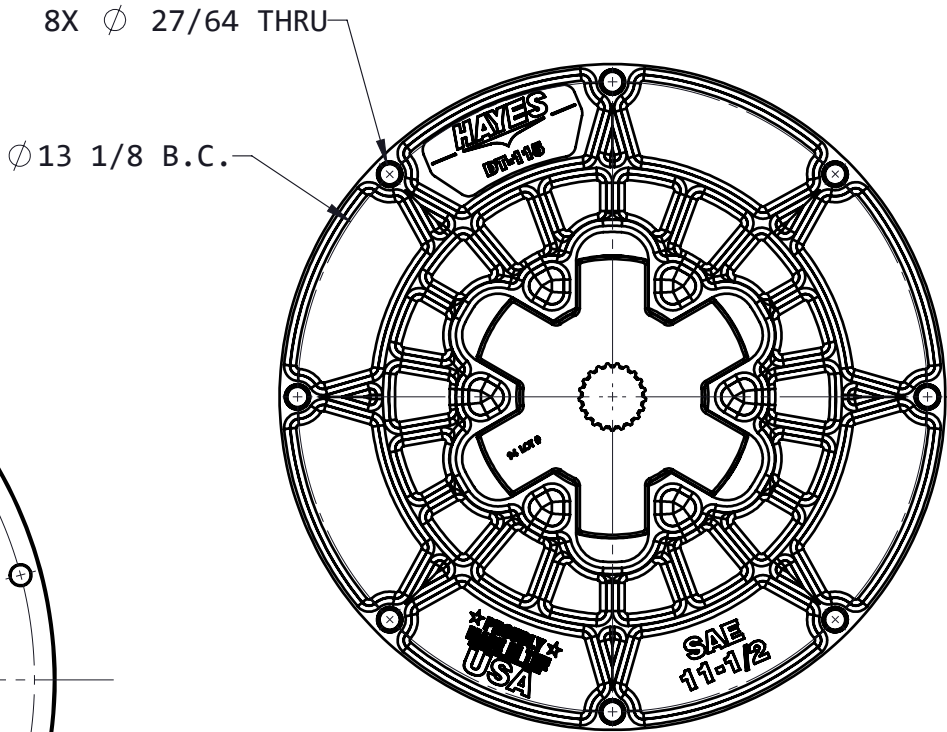
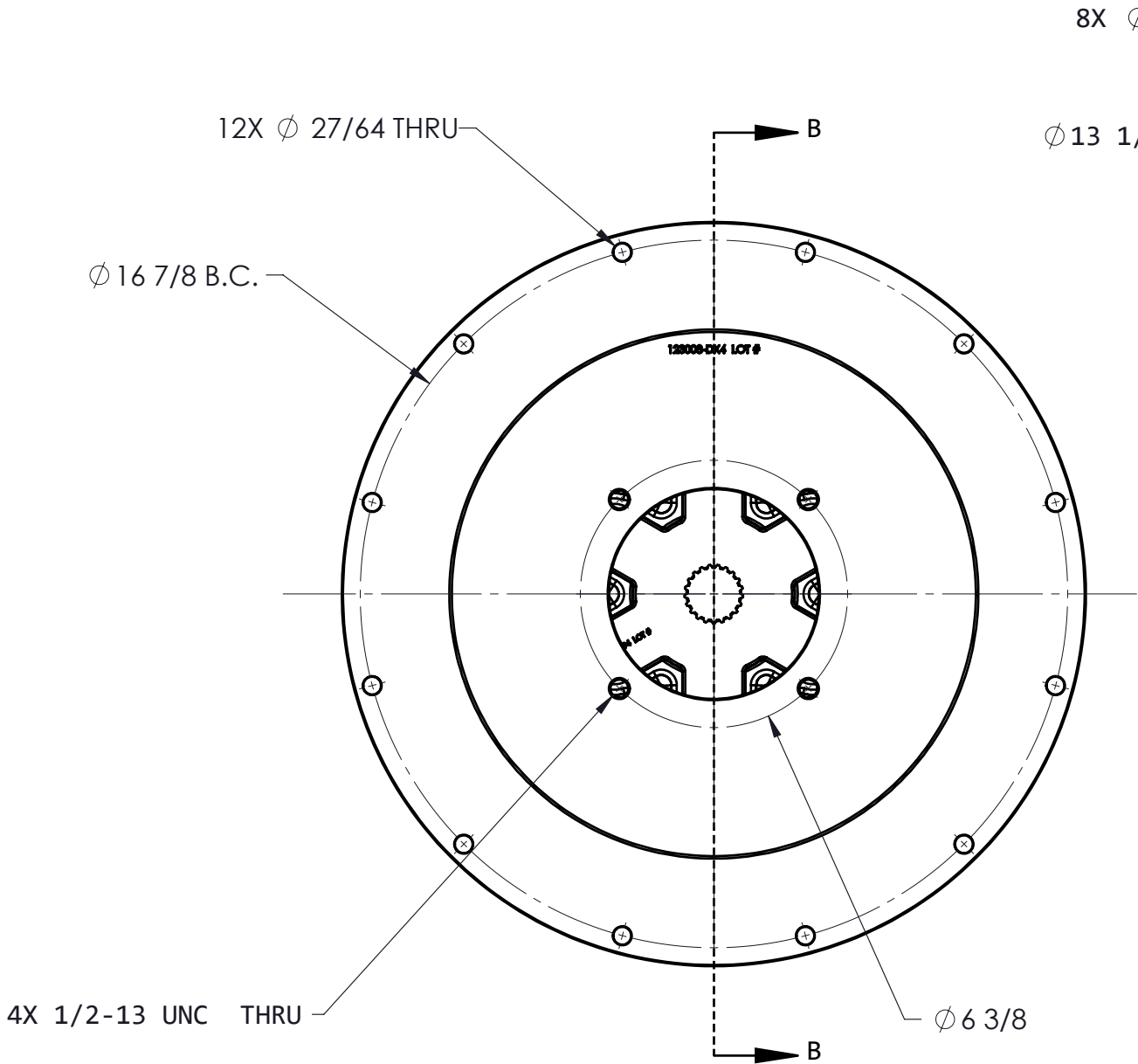
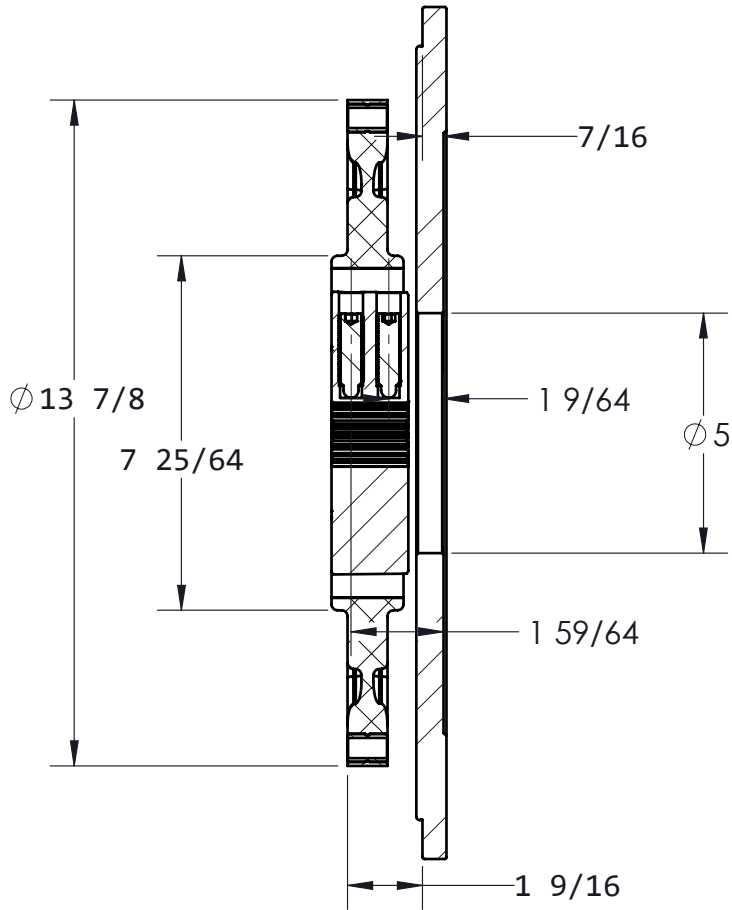


CUSTOMER DRAWING

REVISIONS						
ZONE	REV.	DESCRIPTION	DATE	APR 1	APR 2	DCR #



PUMP DRIVE SPECS	
FLYWHEEL	SAE 11.5
HOUSING	SAE 3
PUMP FLANGE	SAE C 4-BOLT
PUMP SHAFT	21T 16/32
HP RATING (@1800 RPM)	3300 FT.LBS (MAX)

PROPRIETARY AND CONFIDENTIAL
THE INFORMATION CONTAINED IN THIS DRAWING IS THE SOLE PROPERTY OF HAYES MANUFACTURING. ANY REPRODUCTION IN PART OR AS A WHOLE WITHOUT THE WRITTEN PERMISSION OF HAYES MANUFACTURING IS PROHIBITED.

UNLESS OTHERWISE SPECIFIED:
DIMENSIONS ARE IN INCHES
TOLERANCES:
FRACTIONAL $\pm 1/32$
ANGULAR: MACH $\pm 1/2^\circ$
TWO DECIMAL $\pm .01$
THREE DECIMAL $\pm .005$
FOUR DECIMAL $\pm .0005$


SYMBOLS
FLATNESS
ROUNDNESS
PARALLELISM
DIA
R
CONCENTRICITY
TRUE POSITION
PERPENDICULARITY
CIRCULAR RUN OUT
TOTAL RUN OUT
COUNTERBORE
COUNTERSINK
HOLE DEPTH
SYMMETRIC

CLASS
SAE 11.5
DESCRIPTION
11-1/2, 3, 21T16/32, C4

MAKE
X
BUY
WEIGHT
LB
VOLUME
CU. IN.
HEAT TREAT
FINISH

ITEM NO.	PART NUMBER	DESCRIPTION	QTY.
1	DT-115-QA	DRIVE PLATE	1
2	HDT1-94	HEX-FLX HUB	1
3	123008-DX4	PUMP MOUNT PLATE	1

	NAME	DATE
DRAWN	ZJS	06/29/22
PCM APPR.		
ENG APPR.		
SHIP. APPR.		
QA APPR.		
MATERIAL		



TITLE:
HEX-FLX PUMP DRIVE KIT

DWG. NO.
DT-115-HDT1-94-DX4

REV

DO NOT SCALE

SHEET 1 OF 4

5

4

3

2

1

INSTALLATION DRAWING

REVISIONS

ZONE	REV.	DESCRIPTION	DATE	APR 1	APR 2
-	-	SEE CUSTOMER	-	-	-

INSTALLATION INSTRUCTIONS

FLYWHEEL MOUNT

- BE SURE FLYWHEEL IS CLEAN AND FREE OF RUST AND DEBRIS.
- INSTALL HEX-FLX DRIVE PLATE TO FLYWHEEL USING PROPER INSTALLATION ORIENTATION. (SEE DIAGRAMS)
- HAYES MANUFACTURING RECOMMENDS THE USE OF GRADE 8/CLASS 10.9 FASTENERS, NO LOCK WASHERS, AND CHOICE OF RED OR BLUE THREAD LOCKER. TORQUE BOLTS TO ENGINE MFG. SPECS OR STANDARD TORQUE FOR GRADE/CLASS AND SIZE OF THREAD.

HOUSING MOUNT

- BE SURE ENGINE HOUSING IS CLEAN AND FREE OF RUST AND DEBRIS.
- CHECK TO MAKE SURE DRIVE HUB FITS THROUGH PUMP PILOT BORE OF PUMP MOUNT PLATE.
- IF HEX-FLX HUB FITS THROUGH PUMP PILOT OF MOUNTING PLATE, THEN INSTALL PUMP MOUNT PLATE TO ENGINE.
 - IF HUB DOES NOT FIT THROUGH PUMP PILOT BORE. FOLLOW THE NEXT STEPS, IN THIS ORDER.
 - SEE INSTRUCTIONS FOR PUMP MOUNTING.
 - SEE INSTRUCTIONS FOR DRIVE HUB MOUNTING.
- HAYES MANUFACTURING RECOMMENDS THE USE OF GRADE 5/CLASS 8.8 OR BETTER FASTENER. USE YOUR CHOICE OF WASHERS AND/OR THREAD LOCKER. TORQUE TO ENGINE MFG RECOMMENDATIONS OR USE STANDARD TORQUE FOR GRADE/CLASS AND SIZE OF BOLT.

DRIVE HUB MOUNTING

- BE SURE PUMP SHAFT IS CLEAN AND FREE OF GREASE OR OIL
- INSTALL HUB ONTO PUMP SHAFT USING PROPER ORIENTATION. (SEE DIAGRAMS)
- HUB LOCATION IS IMPORTANT TO ENSURE PROPER ASSEMBLY. WHILE MAINTAINING HUB LOCATION, TORQUE SET SCREWS TO 45 FT.LBS.

WARNING!!! BE SURE THAT BOTH SET SCREWS ARE OVER THE PUMP SHAFT OR DAMAGE WILL OCCUR TO THE HUB.

PUMP MOUNTING

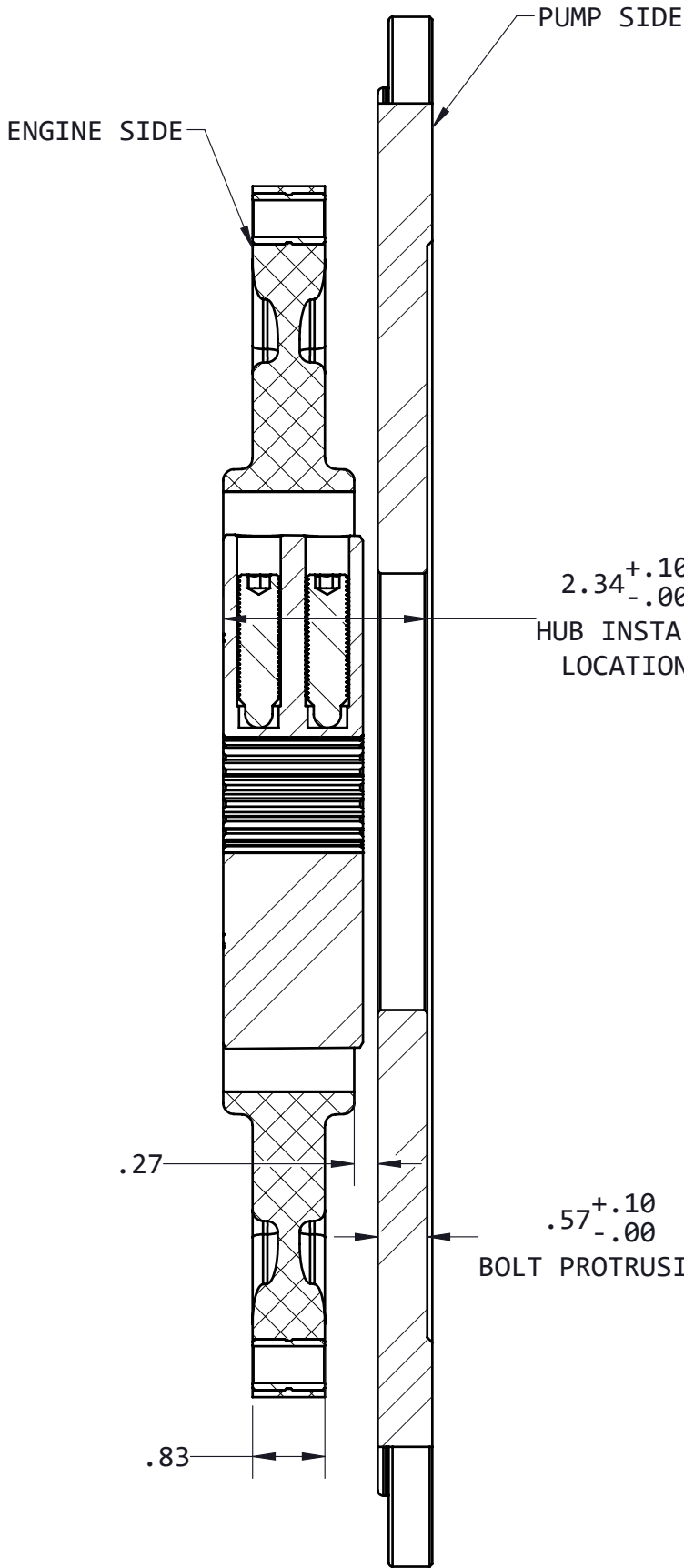
- BE SURE PUMP FACE IS CLEAN AND FREE OF RUST AND DEBRIS.
- INSTALL PUMP TO PUMP PLATE. INSURE PUMP SITS FLAT AND FULLY AGAINST PUMP MOUNT PLATE FACE.
- HAYES MANUFACTURING RECOMMENDS THE USE OF GRADE 5/CLASS 8.8 OR BETTER FASTENER. USE YOUR CHOICE OF WASHERS AND/OR THREAD LOCKER. TORQUE TO HAYES MANUFACTURING RECOMMENDATIONS. (SEE DIAGRAMS)

WARNING!!! BOLTS MUST NOT PROTRUDE THRU PUMP MOUNT PLATE OR DAMAGE MAY OCCUR!

WARNINGS!!!

IMPROPER INSTALLATION OF HUB COULD CAUSE PREMATURE WEAR AND/OR FAILURE.

IF YOU HAVE QUESTIONS CONCERNING LOCATION OF METAL HUB ON PUMP SHAFT OR ANY INSTALLATION PROCEDURES, PLEASE CONTACT DISTRIBUTOR OR HAYES MANUFACTURING FOR FURTHER INFORMATION.



TORQUE (4) SET SCREWS
TO 45 FT. LBS
DO NOT REMOVE!!

4X 1/2-13 UNC THRU
TORQUE:
60 FT.LBS. (DRY)
40 FT.LBS. (LUBRICATED)

PROPRIETARY AND CONFIDENTIAL
THE INFORMATION CONTAINED IN THIS
DRAWING IS THE SOLE PROPERTY OF
HAYES MANUFACTURING. ANY
REPRODUCTION IN PART OR AS A WHOLE
WITHOUT THE WRITTEN PERMISSION OF
HAYES MANUFACTURING IS PROHIBITED.

UNLESS OTHERWISE SPECIFIED:
DIMENSIONS ARE IN INCHES
TOLERANCES:
FRACTIONAL ±1/32
ANGULAR: MACH ±1/2°
TWO DECIMAL ±.01
THREE DECIMAL ±.005
FOUR DECIMAL ±.0005

SYMBOLS
□ FLATNESS ⊙ CONCENTRICITY ⊥ COUNTERBORE
○ ROUNDNESS ⊕ TRUE POSITION ∇ COUNTERSINK
// PARALLELISM ⊥ PERPENDICULARITY ∅ HOLE DEPTH
∅ DIAMETER / CIRCULAR RUN OUT ≡ SYMMETRIC
"R" RADIUS / TOTAL RUN OUT

CLASS
SAE 11.5

DESCRIPTION
11-1/2, 3, 21T16/32, C4

MAKE	WEIGHT	HEAT TREAT
X	LB	
BUY	VOLUME	FINISH
	CU. IN.	

	NAME	DATE
DRAWN	ZJS	06/29/22
PCM APPR.		
ENG APPR.		
SHIP. APPR.		
QA APPR.		
MATERIAL		



TITLE:
HEX-FLX PUMP DRIVE KIT

DWG. NO. DT-115-HDT1-94-DX4	REV
--------------------------------	-----

DO NOT SCALE	SHEET 2 OF 4
--------------	--------------

5

4

3

2

1