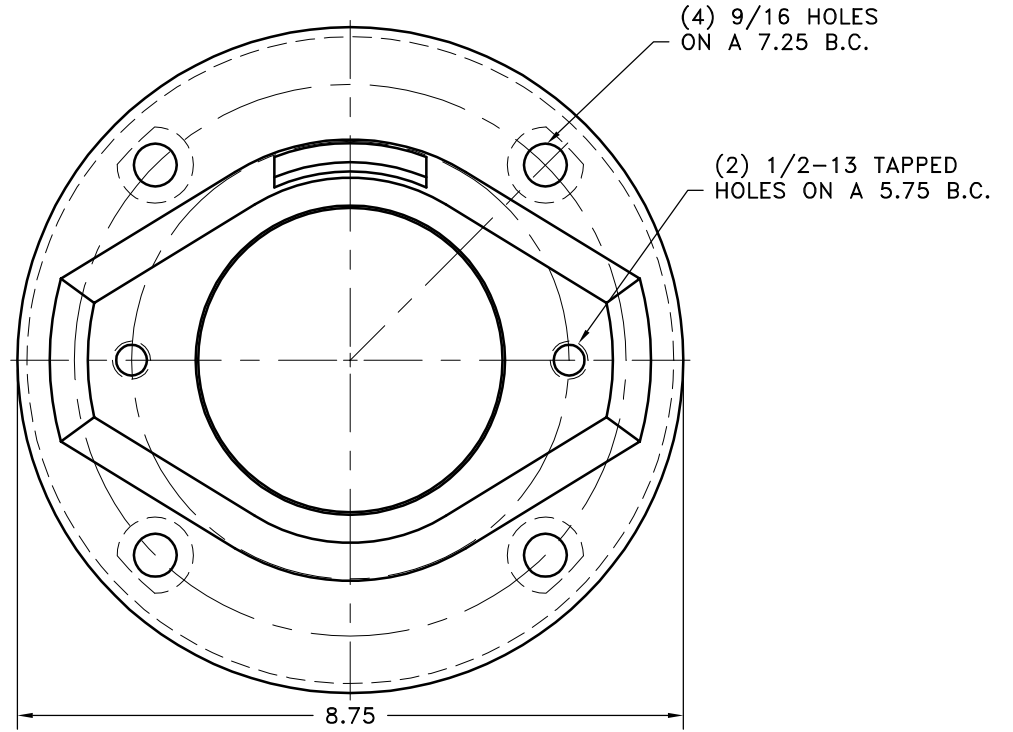
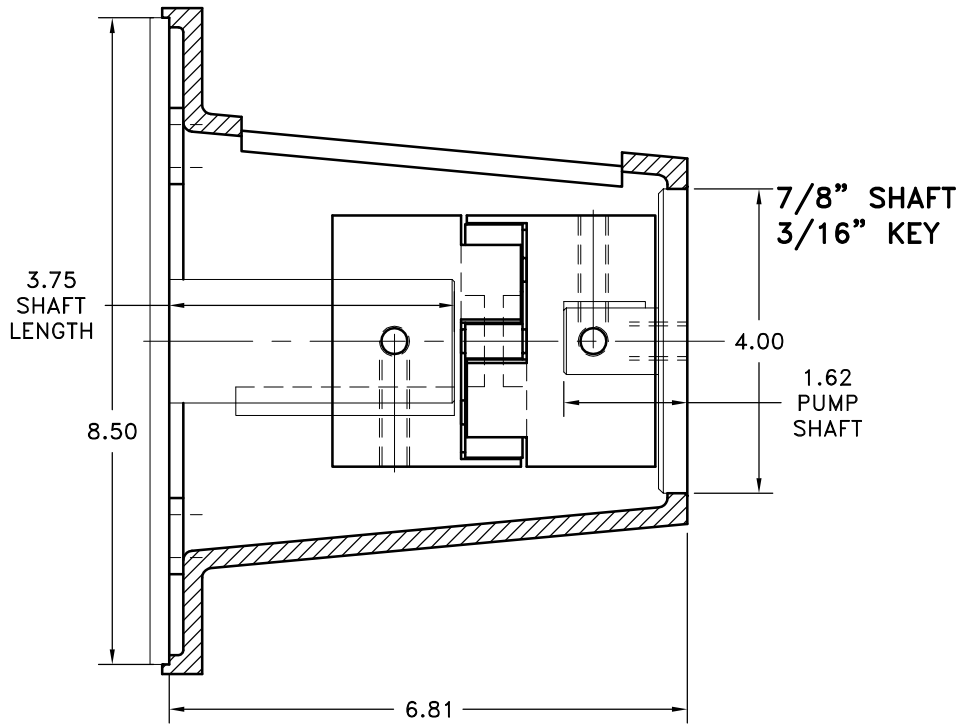


REV	DATE	CHANGE DESCRIPTION	MOD.BY	CK1	CK2



1 5/8" SHAFT
3/8" KEY

THIS DRAWING IS THE PROPERTY OF HAYES MFG. INC. AND IS LOANED SUBJECT TO THE CONDITION THAT IT SHALL NOT BE REPRODUCED, COPIED, LOANED OR OTHERWISE DISPOSED OF, DIRECTLY OR INDIRECTLY. IT SHALL BE USED AS A MEANS OF REFERENCE TO WORK FURNISHED BY THIS COMPANY ONLY AND IS NOT TO BE SUBMITTED TO OUTSIDE PARTIES FOR EXAMINATION WITHOUT OUR CONSENT.

DET.	PART NUMBER	DESCRIPTION	QTY.
4	E56-B2	ELECTRIC MOTOR HOUSING	1
3	L110U	L110 URETHANE INSERT	1
2	L110x7/8x3/16	L110 COUPLING HALF	1
1	L110x1-5/8x3/8	L110 COUPLING HALF	1

SYMBOLS		DET.	PART NUMBER	DESCRIPTION	QTY.
	FLATNESS	DO NOT SCALE			
	STRAIGHTNESS	DRAWING			
	ANGULARITY	TOLERANCES UNLESS OTHERWISE SPECIFIED			
	SQUARENESS	12/5 MAXIMUM			
	PARALLELISM	ANGLE ±1/2°			
	CONCENTRICITY	FRACTION ±1/32			
	TRUE POSITION	DECIMAL			
	ROUNDNESS	.00 ±.01			
	CIRCULAR RUN OUT	.000 ±.005			
	TOTAL RUN OUT	.0000 ±.0005			
	CYLINDRICITY				
	FINISH				
- UNLESS OTHERWISE SPECIFIED -		REMOVE FIRST THREAD			
		ON ALL TAPPED HOLES			
		BREAK ALL SHARP CORNERS .010 TO .020			
		STAMP OR MARK DRAWING NO.			
		DRAWN BY	DATE	DRAWING NO.	
		SIETING	05-01-08	E56-B2-L110-01	
		CHECKED BY	SCALE	SHEET	OF
		RJH		REV.	

HAYES
MANUFACTURING INC. ®

TITLE
ELECTRIC MOTOR HOUSING AND COUPLING ASSY

MATERIAL