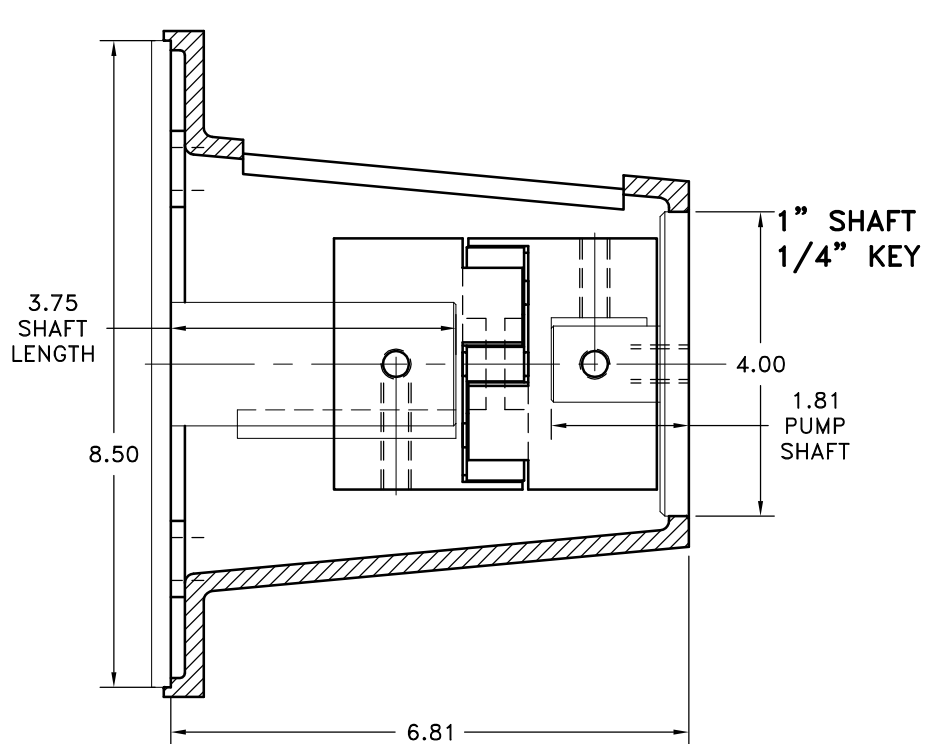
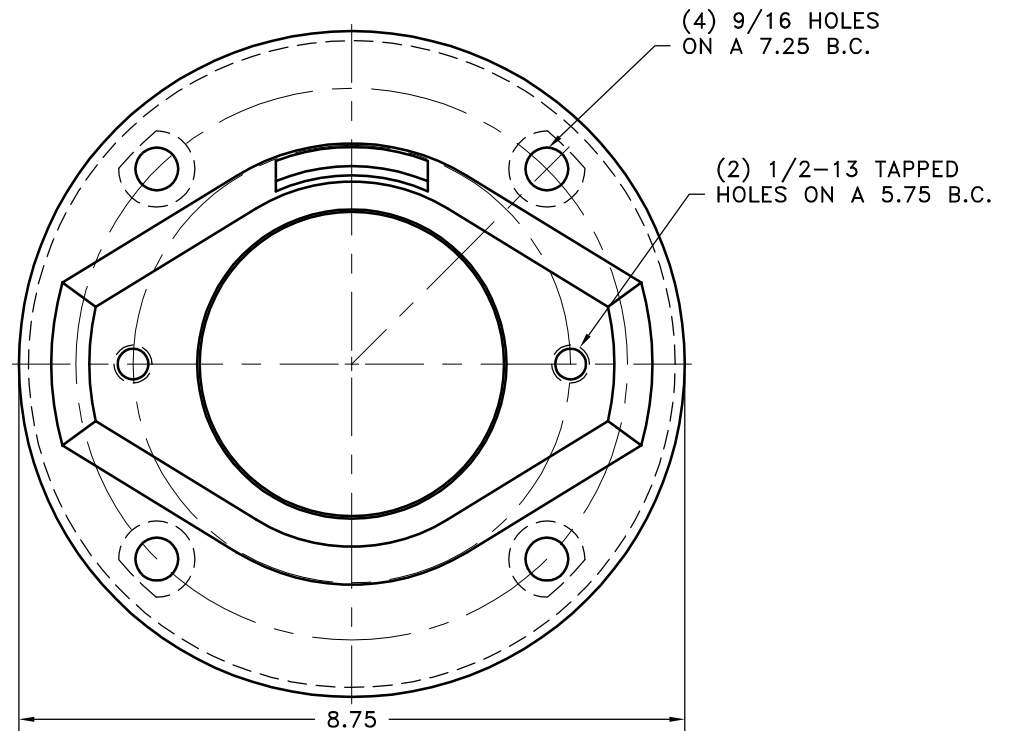


REV	DATE	CHANGE DESCRIPTION	MOD.BY	CK1	CK2



1 5/8" SHAFT
3/8" KEY



THIS DRAWING IS THE PROPERTY OF HAYES MFG. INC. AND IS LOANED SUBJECT TO THE CONDITION THAT IT SHALL NOT BE REPRODUCED, COPIED, LOANED OR OTHERWISE DISPOSED OF, DIRECTLY OR INDIRECTLY. IT SHALL BE USED AS A MEANS OF REFERENCE TO WORK FURNISHED BY THIS COMPANY ONLY AND IS NOT TO BE SUBMITTED TO OUTSIDE PARTIES FOR EXAMINATION WITHOUT OUR CONSENT.

5	AC-56	ACCESS COVERS	2
4	E56-B2	ELECTRIC MOTOR HOUSING	1
3	L110U	L110 URETHANE INSERT	1
2	L110x1x1/4	L110 COUPLING HALF	1
1	L110x1-5/8x3/8	L110 COUPLING HALF	1

SYMBOLS	DET.	PART NUMBER	DESCRIPTION	QTY.
FLATNESS STRAIGHTNESS ANGULARITY PERPENDICULARITY PARALLELISM CONCENTRICITY TRUE POSITION ROUNDNESS CIRCULAR RUN OUT TOTAL RUN OUT CYLINDRICITY FINISH	DO NOT SCALE DRAWING TOLERANCES UNLESS OTHERWISE SPECIFIED 125 MAXIMUM ANGLE ±1/2" FRACTION ±1/32 DECIMAL .00 ±.01 .000 ±.005 .0000 ±.0005	TITLE ELECTRIC MOTOR HOUSING AND COUPLING ASS'Y MATERIAL	HAYES MANUFACTURING INC. ®	
- UNLESS OTHERWISE SPECIFIED - REMOVE FIRST THREAD ON ALL TAPPED HOLES BREAK ALL SHARP CORNERS .010 TO .020 STAMP OR MARK DRAWING NO.		DRAWN BY SIETING CHECKED BY RJH	DATE 12-22-2010 SCALE	DRAWING NO. E56-B2-L110-02 SHEET OF REV.