



**Hayes Manufacturing, Inc.**  
 6875 U.S. Hwy 131, Fife Lake MI 49633  
 Ph: (231) 879-3372 Fax: (231) 879-4330



## Flywheel Coupling Warranty Claim Form

*All fields below must be complete for Hayes to consider a warranty claim. After receiving this completed claim form, along with the failed components, Hayes will investigate the potential for warranty consideration.*

**Contact Information:** \_\_\_\_\_ Date of Claim: \_\_\_\_\_

Company Name: \_\_\_\_\_

Address: \_\_\_\_\_

Contact: \_\_\_\_\_ Phone: \_\_\_\_\_ Fax: \_\_\_\_\_

Email: \_\_\_\_\_

**Hayes Components:**

Assembly #: \_\_\_\_\_ or Part #: \_\_\_\_\_

**Engine Information:**

Make: \_\_\_\_\_ Model: \_\_\_\_\_ HP: \_\_\_\_\_

Flywheel to Pump Mount T.I.R. Face: \_\_\_\_\_ Pilot: \_\_\_\_\_  
 (See Indicator 1 Drawing) (T.I.R.) (T.I.R.)

Flywheel to Housing T.I.R. Face: \_\_\_\_\_ Pilot: \_\_\_\_\_  
 (See Indicator 2 Drawing) (T.I.R.) (T.I.R.)

Housing to Flywheel T.I.R. Face: \_\_\_\_\_ Pilot: \_\_\_\_\_  
 (See Indicator 3 Drawing) (T.I.R.) (T.I.R.)

**Application Information:** Machine Serial # \_\_\_\_\_

Application: \_\_\_\_\_ Idle Speed: \_\_\_\_\_ Max RPM: \_\_\_\_\_

# Of Hours: \_\_\_\_\_ Date put into service: \_\_\_\_\_

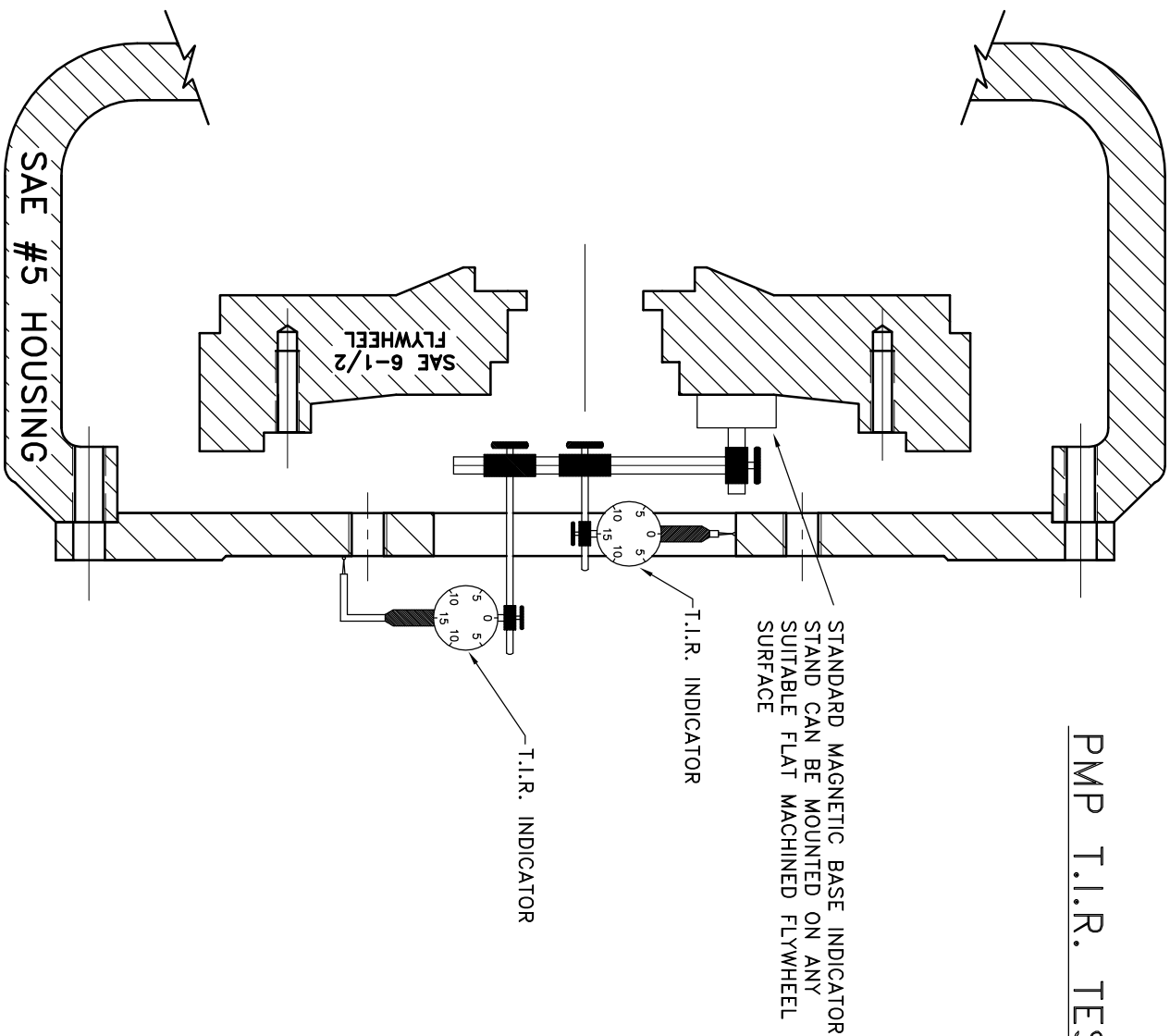
**Approval Information:**

Approved (by Supplier): \_\_\_\_\_ Date: \_\_\_\_\_

Denied (by Supplier): \_\_\_\_\_ Date: \_\_\_\_\_

**Important: Additional information may be required depending on application.**

# PMP T.I.R. TEST SETUP



STANDARD MAGNETIC BASE INDICATOR STAND CAN BE MOUNTED ON ANY SUITABLE FLAT MACHINED FLYWHEEL SURFACE

T.I.R. INDICATOR

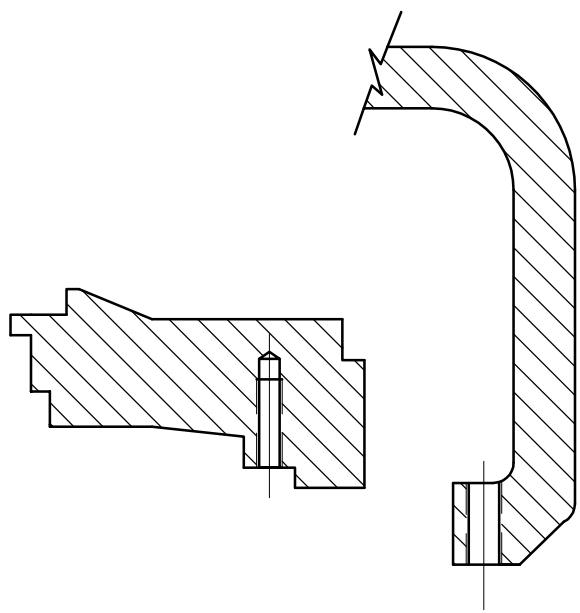
T.I.R. INDICATOR

- NOTE:**  
 WHEN USING A NON ADJUSTABLE MAGNETIC BASE INDICATOR STAND YOU WILL WANT TO REMOVE THE PUMP MOUNT PLATE AND COUPLING TO MOUNT THE MAGNETIC BASE INDICATOR ON THE FACE OF THE FLYWHEEL.
1. REMOVE PUMP MOUNT PLATE
  2. REMOVE COUPLING
  3. MOUNT PUMP MOUNT PLATE
  4. PLACE MAGNETIC INDICATOR ON FLAT PORTION OF FLYWHEEL.
  5. SET UP INDICATORS AS SHOWN (ONE INDICATOR TEST AT A TIME IS PREFERRED).

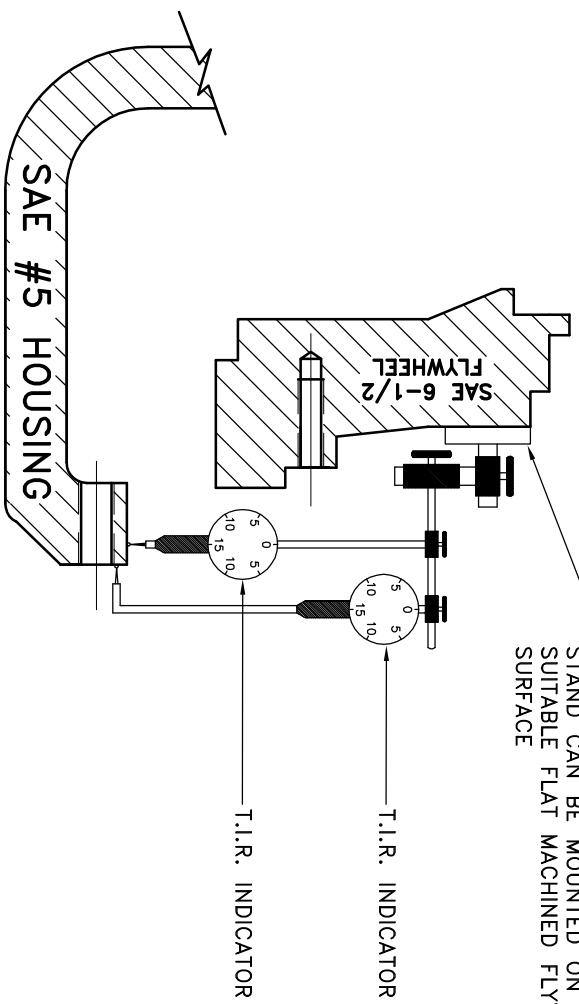
THIS DRAWING IS THE PROPERTY OF HAYES MFG. INC. AND IS LOANED SUBJECT TO THE CONDITION THAT IT IS NOT TO BE REPRODUCED, COPIED, OR TRANSMITTED IN ANY FORM OR BY ANY MEANS, ELECTRONIC OR MECHANICAL, INCLUDING PHOTOCOPYING, RECORDING, OR BY ANY INFORMATION STORAGE AND RETRIEVAL SYSTEM. IT SHALL BE USED AS A MEANS OF REFERENCE TO WORK FURNISHED BY THIS COMPANY ONLY AND IS NOT TO BE SUBMITTED TO OUTSIDE PARTIES FOR EXAMINATION WITHOUT OUR CONSENT.

<b>SYMBOLS</b> FLATNESS ANGULARITY SQUAREDNESS PARALLELISM PERPENDICULARITY CONCENTRICITY TOTAL RUN OUT CIRCULAR RUN OUT ROUNDNESS TOTAL RUN OUT CYLINDRICITY FINISH - UNLESS OTHERWISE SPECIFIED - REMOVE FIRST THREAD BREAK ALL SHARP CORNERS 0.10 TO 0.20 STAMP OR MARK DRAWING NO.	DET. DO NOT SCALE DRAWING	PART NUMBER TOLERANCES UNLESS OTHERWISE SPECIFIED ANGLE ±1/2° FRACTION ±1/32 DECIMAL ±.01 ±.005 ±.0005	DESCRIPTION T.I.R. INDICATOR SETUP	QTY.
	HAYES MANUFACTURING INC.	TITLE T.I.R. INDICATOR SETUP	DRAWN BY LAWSON	DATE 8-24-00

## ENGINE HOUSING T.I.R. TEST SETUP



STANDARD MAGNETIC BASE INDICATOR STAND CAN BE MOUNTED ON ANY SUITABLE FLAT MACHINED FLYWHEEL SURFACE



**NOTE:**  
 WHEN USING A NON ADJUSTABLE MAGNETIC BASE INDICATOR STAND YOU WILL WANT TO REMOVE THE PUMP MOUNT PLATE AND COUPLING TO MOUNT THE MAGNETIC BASE INDICATOR ON THE FACE OF THE FLYWHEEL.

1. REMOVE PUMP MOUNT PLATE
2. REMOVE COUPLING
3. PLACE MAGNETIC INDICATOR ON FLAT PORTION OF FLYWHEEL.
4. SET UP INDICATORS AS SHOWN (ONE INDICATOR TEST AT A TIME IS PREFERRED).

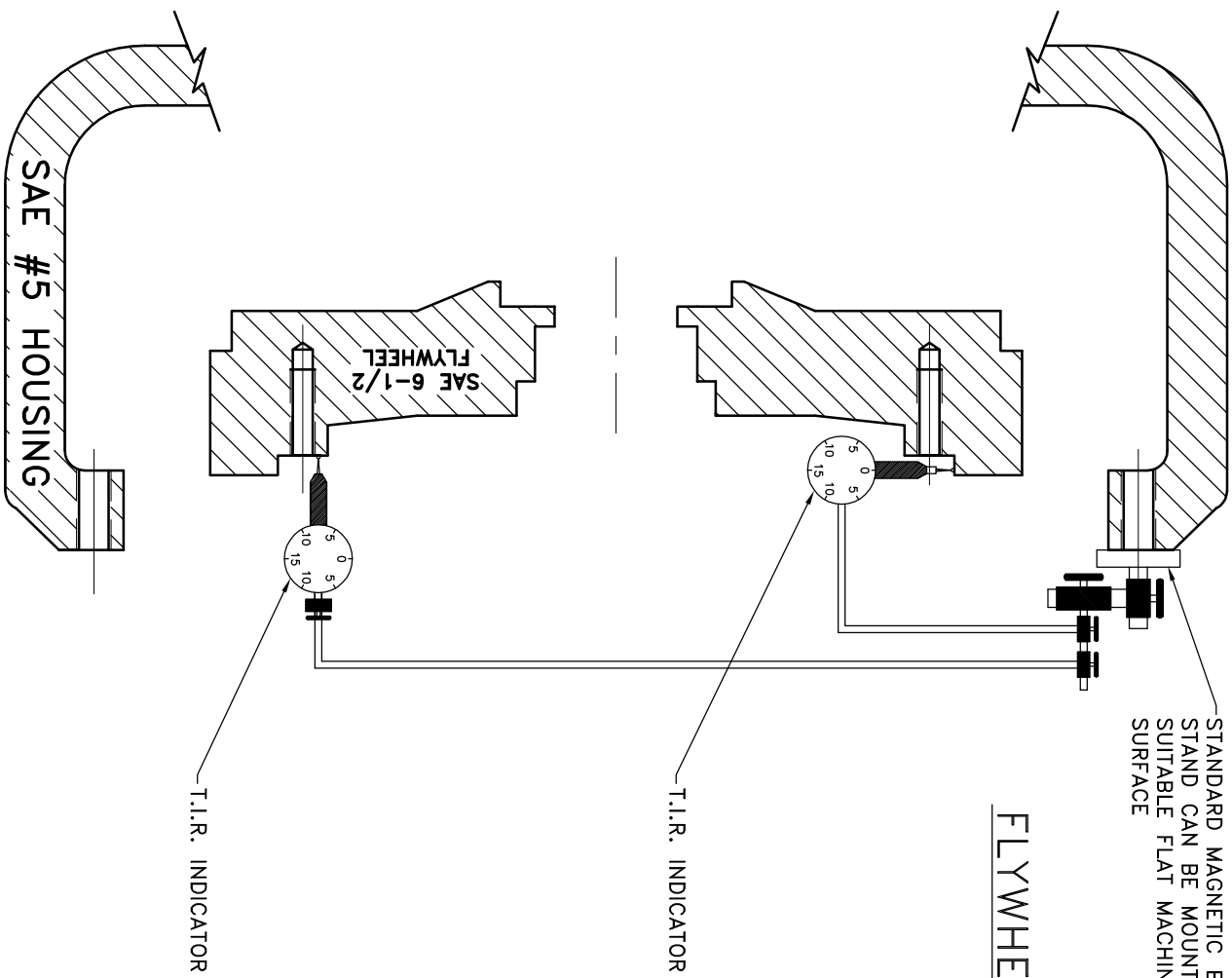
THIS DRAWING IS THE PROPERTY OF HAYES MFG. INC. AND IS LOANED SUBJECT TO THE CONDITION THAT IT SHALL NOT BE REPRODUCED, COPIED, EITHER WHOLLY OR IN PART, OR TRANSMITTED IN ANY MANNER. IT SHALL BE USED AS A MEANS OF REFERENCE TO WORK FURNISHED BY THIS COMPANY ONLY, AND IS NOT TO BE SUBMITTED TO OUTSIDE PARTIES FOR EXAMINATION WITHOUT OUR CONSENT.

<b>SYMBOLS</b> FLATNESS ANGULARITY SQUAREDNESS PARALLELISM PERPENDICULARITY CIRCULAR RUN OUT TOTAL RUN OUT CYLINDRICITY FINISH - UNLESS OTHERWISE SPECIFIED - REMOVE FIRST THREAD BREAK ALL SHARP CORNERS 0.10 TO 0.20 STAMP OR MARK DRAWING NO.	DET. PART NUMBER DO NOT SCALE DRAWING	DESCRIPTION TOLERANCES UNLESS OTHERWISE SPECIFIED ANGLE ±1/32 FRACTION ±1/32 DECIMAL ±.01 ±.005 ±.0005	QTY.
	TITLE T.I.R. INDICATOR SETUP	DRAWN BY LAWSON	DATE 8-24-00



STANDARD MAGNETIC BASE INDICATOR STAND CAN BE MOUNTED ON ANY SUITABLE FLAT MACHINED FLYWHEEL SURFACE

## FLYWHEEL T.I.R. TEST SETUP



**NOTE:**  
 WHEN USING A NON ADJUSTABLE MAGNETIC BASE INDICATOR STAND YOU WILL WANT TO REMOVE THE PUMP MOUNT PLATE AND COUPLING TO MOUNT THE MAGNETIC BASE INDICATOR ON THE FACE OF THE FLYWHEEL HOUSING.

1. REMOVE PUMP MOUNT PLATE
2. REMOVE COUPLING
3. PLACE MAGNETIC INDICATOR ON FLAT PORTION OF FLYWHEEL HOUSING.
4. SET UP INDICATORS AS SHOWN (ONE INDICATOR TEST AT A TIME IS PREFERRED).

THIS DRAWING IS THE PROPERTY OF HAYES MFG. INC. AND IS LOANED SUBJECT TO THE CONDITION THAT IT SHALL NOT BE REPRODUCED, COPIED, OR TRANSMITTED IN ANY FORM OR BY ANY MEANS, ELECTRONIC OR MECHANICAL, INCLUDING PHOTOCOPYING, RECORDING, OR BY ANY INFORMATION STORAGE AND RETRIEVAL SYSTEM. IT SHALL BE USED AS A MEANS OF REFERENCE TO WORK FURNISHED BY THIS COMPANY ONLY AND IS NOT TO BE SUBMITTED TO OUTSIDE PARTIES FOR EXAMINATION WITHOUT OUR CONSENT.

<b>SYMBOLS</b> FLATNESS ANGULARITY SQUAREDNESS PARALLELISM PERPENDICULARITY CIRCULAR RUN OUT TOTAL RUN OUT CYLINDRICITY FINISH REMOVE FIRST THREE REMOVE FIRST TWO BREAK ALL SHARP CORNERS 0.10 TO 0.20 STAMP OR MARK DRAWING NO.	DET. DO NOT SCALE DRAWING	PART NUMBER TOLERANCES UNLESS OTHERWISE SPECIFIED ANGLE ±1/32 FRACTION ±1/32 DECIMAL ±.01 ±.005 ±.0005	DESCRIPTION T.I.R. INDICATOR SETUP	QTY.
	DRAWN BY LAWSON	DATE 8-24-00	CHECKED BY SCALE	DRAWING NO. MAGNETIC BASE INDICATOR

SAE #5 HOUSING

SAE 6-1/2 FLYWHEEL

T.I.R. INDICATOR

T.I.R. INDICATOR