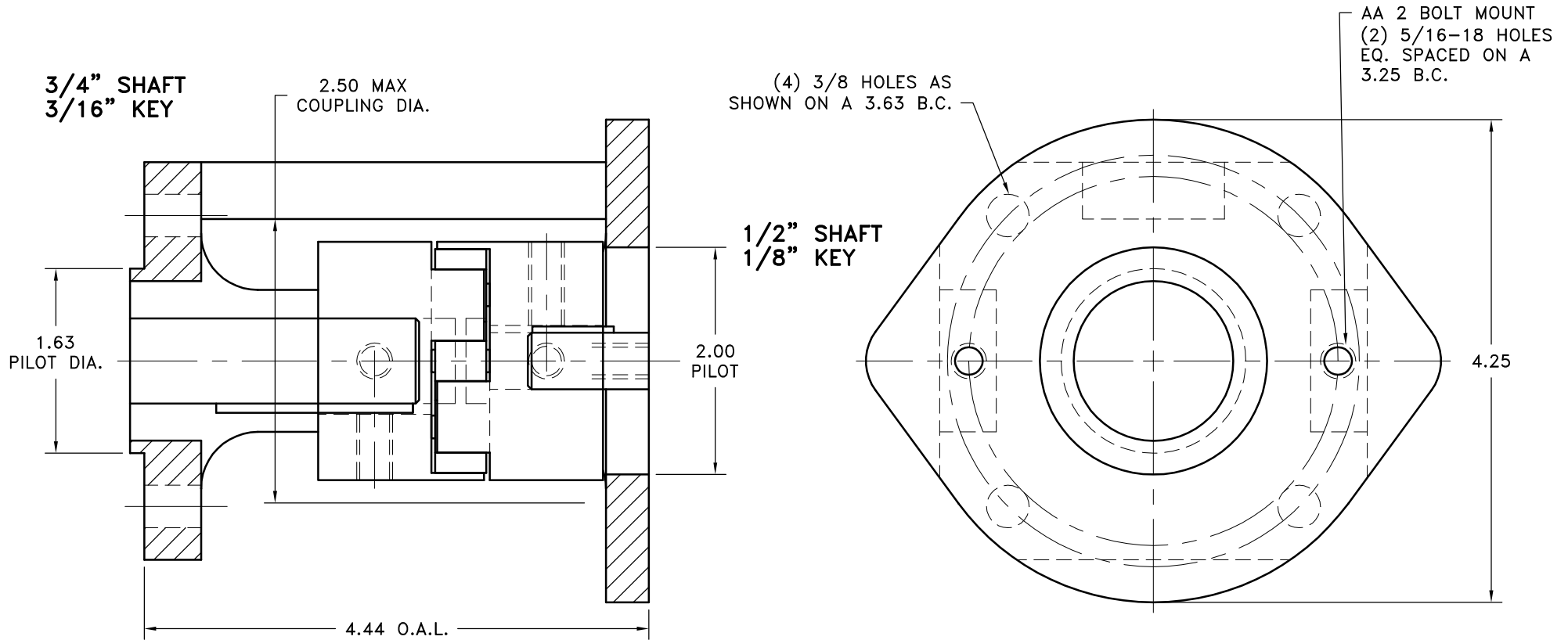


REV	DATE	CHANGE DESCRIPTION	MOD.BY	CK1	CK2



NOTES:
ACCESS COVERS #AC11 (1
REQUIRED)
APPROX. WEIGHT: 1 LB. 6 OZ.

L095-07-03-N

5	AC11	ACCESS COVER	1
4	G11-106-4.44	SMALL ENGINE HOUSING	1
3	L090/L095N	L SERIES NEOPRENE INSERT	1
2	L095-03	L SERIES COUPLING HALF	1
1	L095-07	L SERIES COUPLING HALF	1

SYMBOLS	DET.	PART NUMBER	DESCRIPTION	QTY.
FLATNESS STRAIGHTNESS ANGULARITY SQUARENESS PARALLELISM CONCENTRICITY TRUE POSITION ROUNDNESS CIRCULAR RUN OUT TOTAL RUN OUT CYLINDRICITY FINISH	DO NOT SCALE DRAWING TOLERANCES UNLESS OTHERWISE SPECIFIED 125° MAXIMUM ANGLE ±1/2° FRACTION ±1/32 DECIMAL .00 ±.01 .000 ±.005 .0000 ±.0005	L095-07-03-N	HAYES MANUFACTURING INC. ® TITLE L095 SERIES COUPLING W/HOUSING MATERIAL	1
- UNLESS OTHERWISE SPECIFIED - REMOVE FIRST THREAD ON ALL TAPPED HOLES BREAK ALL SHARP CORNERS .010 TO .020 STAMP OR MARK DRAWING NO.	DRAWN BY SIETING CHECKED BY RJH	DATE 03-16-2009 SCALE	DRAWING NO. G11-106-L095-01 SHEET OF REV.	1

THIS DRAWING IS THE PROPERTY OF HAYES MFG. INC. AND IS LOANED
SUBJECT TO THE CONDITION THAT IT SHALL NOT BE REPRODUCED,
COPIED, LOANED OR OTHERWISE DISPOSED OF, DIRECTLY OR INDIRECTLY.
IT SHALL BE USED AS A MEANS OF REFERENCE TO WORK FURNISHED BY
THIS COMPANY ONLY AND IS NOT TO BE SUBMITTED TO OUTSIDE PARTIES
FOR EXAMINATION WITHOUT OUR CONSENT.