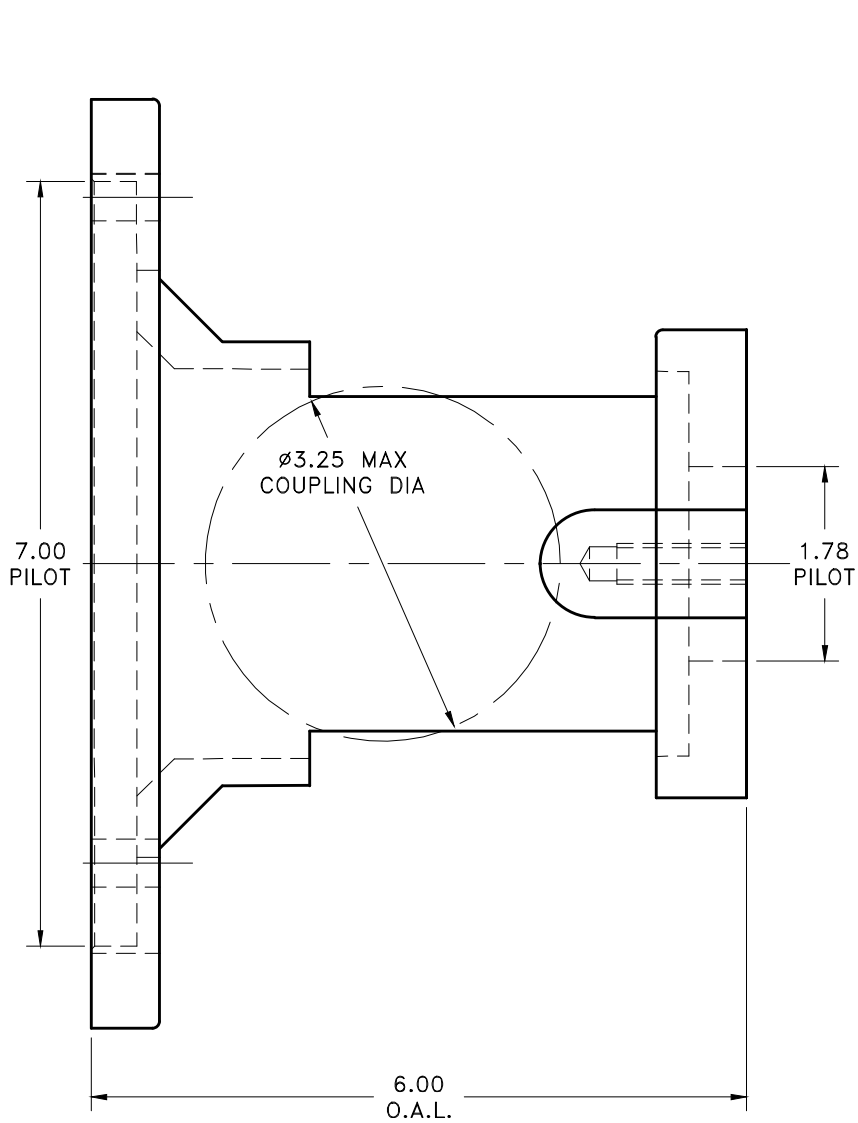
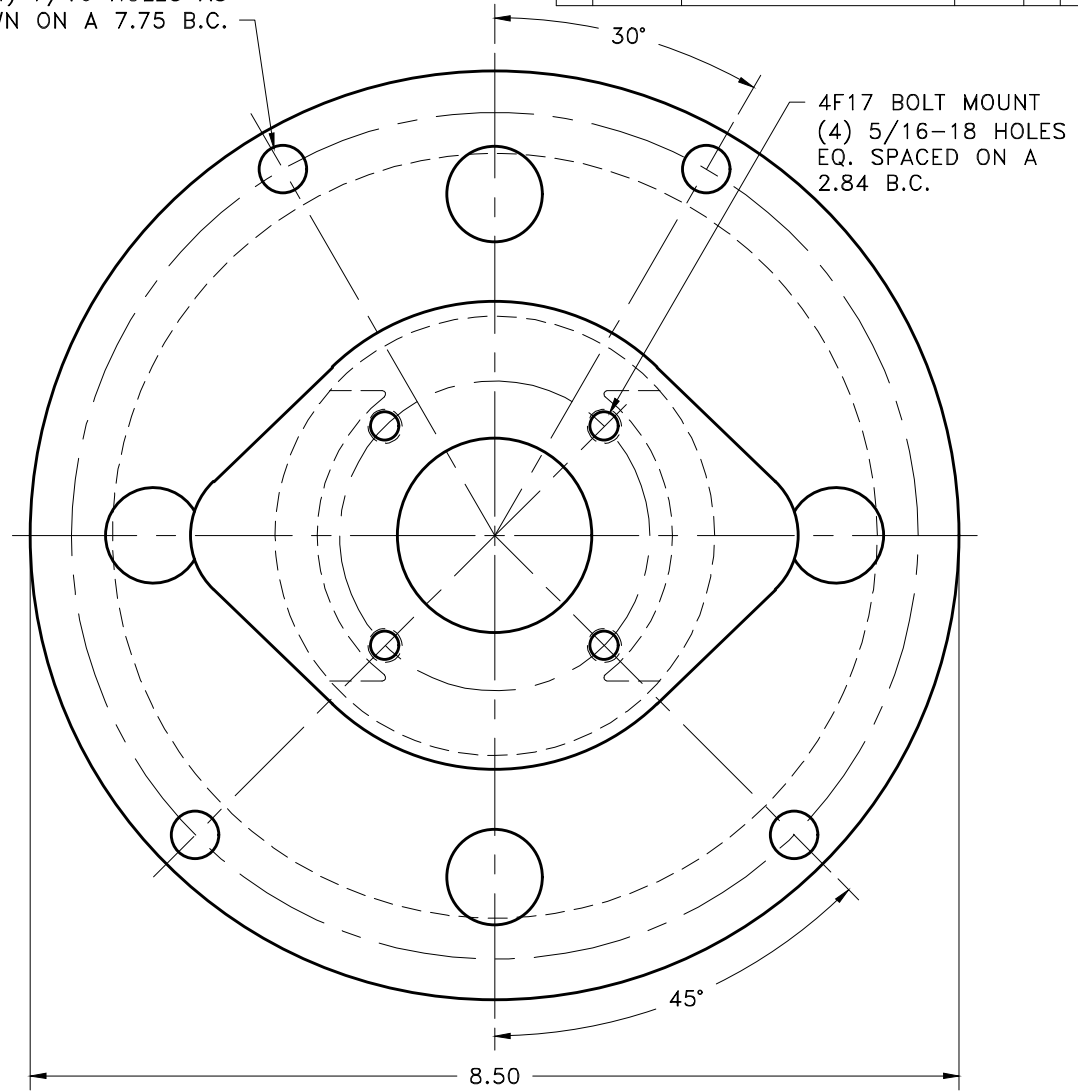


REV	DATE	CHANGE DESCRIPTION	MOD. BY	CK1	CK2



(4) 7/16 HOLES AS SHOWN ON A 7.75 B.C.



NOTE: THIS HOUSING IS ONLY AVAILABLE IN A 6.00" LENGTH.

**NOTES:
ACCESS COVERS #AC16 (2 REQUIRED)
APPROX. WEIGHT: 4 LB. 5 OZ.**

THIS DRAWING IS THE PROPERTY OF HAYES MFG. INC. AND IS LOANED SUBJECT TO THE CONDITION THAT IT SHALL NOT BE REPRODUCED, COPIED, LOANED OR OTHERWISE DISPOSED OF, DIRECTLY OR INDIRECTLY. IT SHALL BE USED AS A MEANS OF REFERENCE TO WORK FURNISHED BY THIS COMPANY ONLY AND IS NOT TO BE SUBMITTED TO OUTSIDE PARTIES FOR EXAMINATION WITHOUT OUR CONSENT.

SYMBOLS	DET.	PART NUMBER	DESCRIPTION	QTY.
<ul style="list-style-type: none"> — FLATNESS — STRAIGHTNESS — ANGULARITY — PERPENDICULARITY — PARALLELISM — CONCENTRICITY — TRUE POSITION — ROUNDNESS — CIRCULAR RUN OUT — TOTAL RUN OUT — CYLINDRICITY — FINISH 	DO NOT SCALE DRAWING			
	TOLERANCES UNLESS OTHERWISE SPECIFIED			TITLE
	ANGLE $\pm 1/2'$		SMALL ENGINE HOUSING	
	FRACTION $\pm 1/32$		MATERIAL	
	DECIMAL		ALUMINUM	
	DECIMAL			
	.00 $\pm .01$			
	.000 $\pm .005$			
	.0000 $\pm .0005$			
CLASS	MAKE: <input type="checkbox"/> BUY: <input type="checkbox"/>	DRAWN BY	DATE	DRAWING NO.
DESCRIPTION		SIETING	05-01-07	G-16-123-6.00
		CHECKED BY	SCALE	SHEET OF REV.
		RJH		