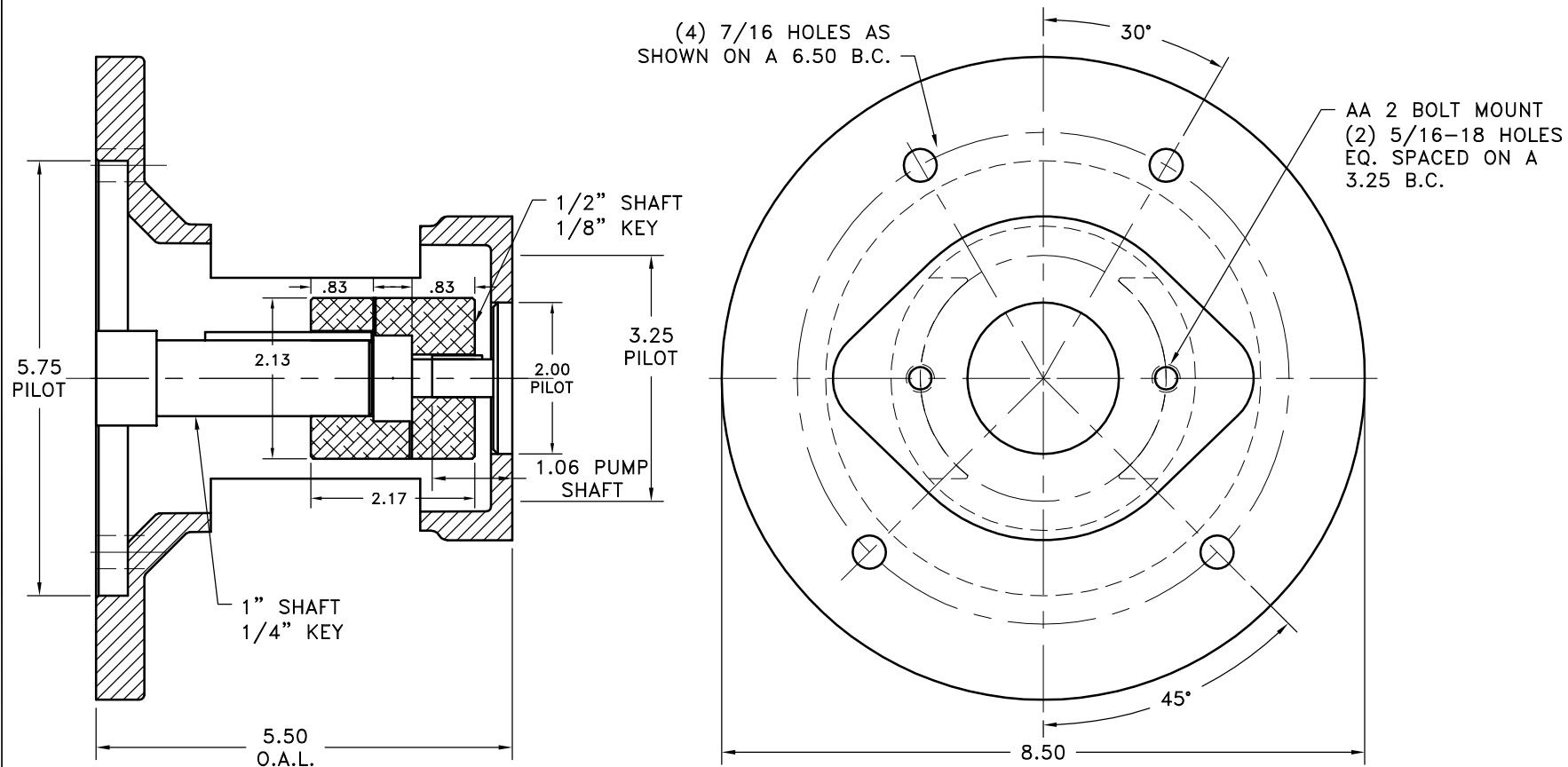


REV	DATE	CHANGE DESCRIPTION	MOD.BY	CK1	CK2



NOTES:
IF NEEDED, ACCESS COVERS #AC16
(2 REQUIRED)

THIS DRAWING IS THE PROPERTY OF HAYES MFG. INC. AND IS LOANED
SUBJECT TO THE CONDITION THAT IT SHALL NOT BE REPRODUCED,
COPIED, LOANED OR OTHERWISE DISPOSED OF, DIRECTLY OR INDIRECTLY.
IT SHALL BE USED AS A MEANS OF REFERENCE TO WORK FURNISHED BY
THIS COMPANY ONLY AND IS NOT TO BE SUBMITTED TO OUTSIDE PARTIES
FOR EXAMINATION WITHOUT OUR CONSENT.

5	AC16	ACCESS COVER	2
4	G-16-127-5.50	SMALL ENGINE HOUSING	1
3	L090/095H	HYTREL INSERT	1
2	L090-11	L SERIES COUPLING	1
1	L090-03	L SERIES COUPLING HALF	1

SYMBOLS	DET.	PART NUMBER	DESCRIPTION	QTY.
▭ FLATNESS — STRAIGHTNESS ∠ ANGULARITY ⊥ SQUARENESS ∥ PARALLELISM ◎ CONCENTRICITY ⊕ TRUE POSITION ○ ROUNDNESS ↗ CIRCULAR RUN OUT ↘ TOTAL RUN OUT ⦶ CYLINDRICITY ✓ FINISH	DO NOT SCALE DRAWING TOLERANCES UNLESS OTHERWISE SPECIFIED 125 MAXIMUM ANGLE ±1/2° FRACTION ±1/32 DECIMAL .00 ±.01 .000 ±.005 .0000 ±.0005	REMOVE FIRST THREAD ON ALL TAPPED HOLES BREAK ALL SHARP CORNERS .010 TO .020 STAMP OR MARK DRAWING NO.	HAYES MANUFACTURING INC. ® TITLE L090 COUPLING W/ SMALL ENGINE HOUSING MATERIAL	DRAWN BY SIETING CHECKED BY RJH DATE 01-20-2009 SCALE DRAWING NO. G16-127-L090-01 SHEET OF REV.