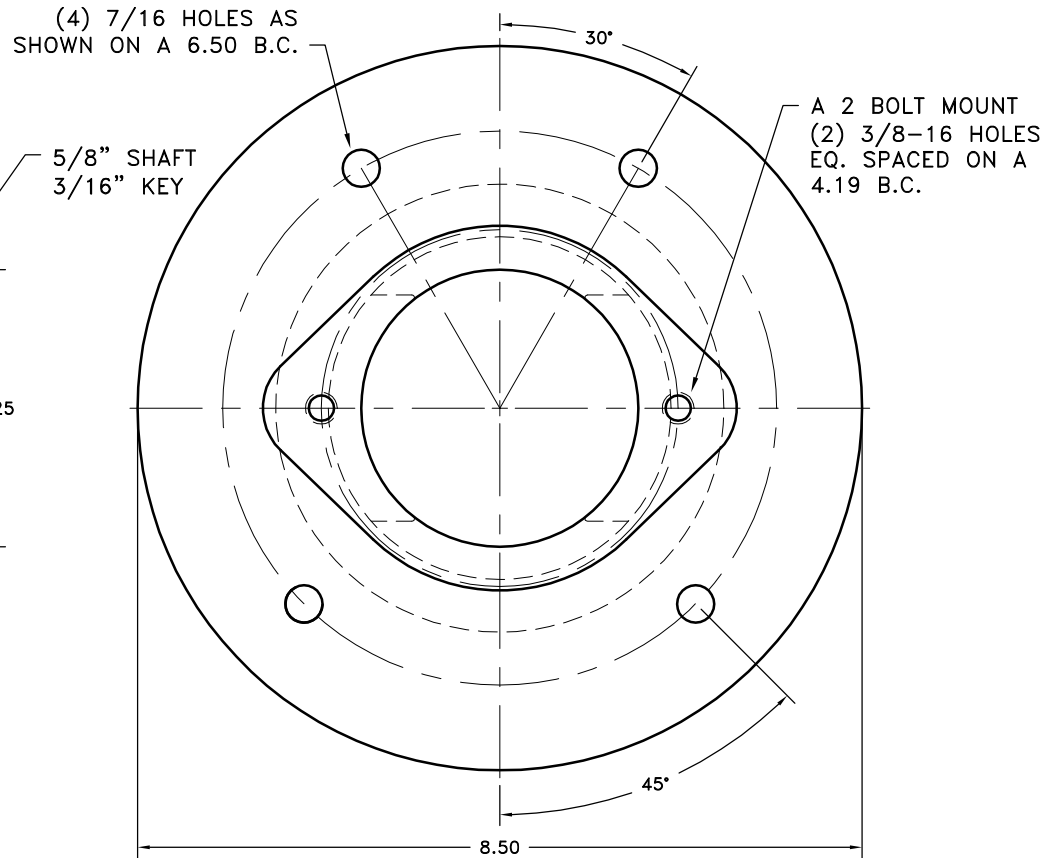
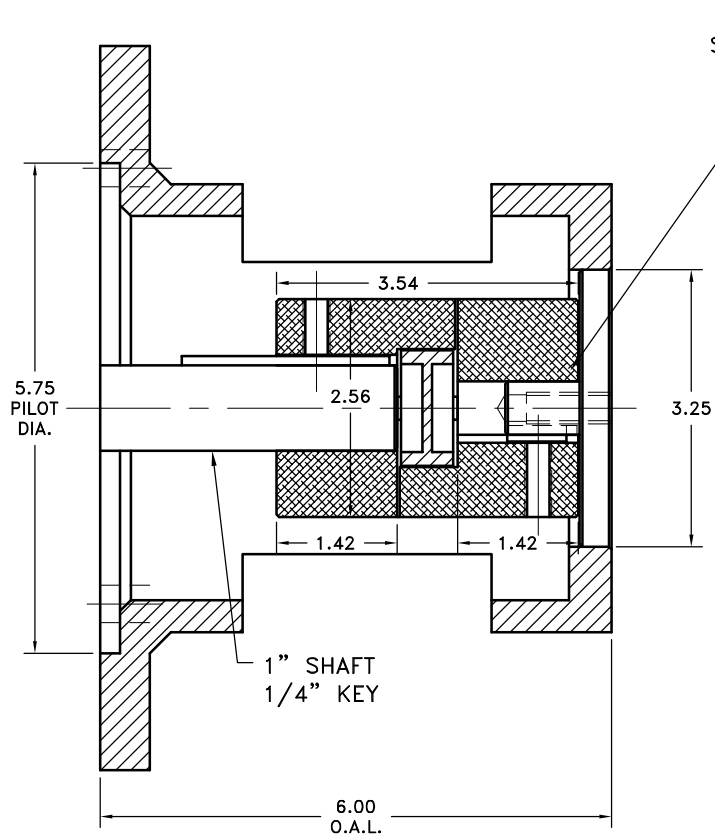


| REV | DATE | CHANGE DESCRIPTION | MOD.BY | CK1 | CK2 |
|-----|------|--------------------|--------|-----|-----|
| | | | | | |



NOTES:
IF NEEDED, ACCESS COVERS #AC18
(2 REQUIRED)
APPROX. WEIGHT: 7 LB. 8 OZ.

THIS DRAWING IS THE PROPERTY OF HAYES MFG. INC. AND IS LOANED SUBJECT TO THE CONDITION THAT IT SHALL NOT BE REPRODUCED, COPIED, LOANED OR OTHERWISE DISPOSED OF, DIRECTLY OR INDIRECTLY. IT SHALL BE USED AS A MEANS OF REFERENCE TO WORK FURNISHED BY THIS COMPANY ONLY AND IS NOT TO BE SUBMITTED TO OUTSIDE PARTIES FOR EXAMINATION WITHOUT OUR CONSENT.

| | | | |
|---|---------------|-----------------------|---|
| 4 | G-18-148-6.00 | SMALL ENGINE HOUSING | 1 |
| 3 | L100N | L-SERIES INSERT | 1 |
| 2 | L100x1x1/4 | L-SERIES COUPLING HUB | 1 |
| 1 | L100x5/8x3/16 | L-SERIES COUPLING HUB | 1 |

| SYMBOLS | DET. | PART NUMBER | DESCRIPTION | QTY. |
|---|---|---|---|---|
| <div> <div>FLATNESS</div> <div>STRAIGHTNESS</div> <div>ANGULARITY</div> <div>SQUARENESS</div> <div>PARALLELISM</div> <div>CONCENTRICITY</div> <div>TRUE POSITION</div> <div>ROUNDNESS</div> <div>CIRCULAR RUN OUT</div> <div>TOTAL RUN OUT</div> <div>CYLINDRICITY</div> <div>FINISH</div> </div> | <div>DO NOT SCALE DRAWING</div> <div>TOLERANCES UNLESS OTHERWISE SPECIFIED</div> <div>1/32" MAXIMUM</div> <div>ANGLE ±1/2°</div> <div>FRACTION ±1/32</div> <div>DECIMAL</div> <div>.00 ±.01</div> <div>.000 ±.005</div> <div>.0000 ±.0005</div> | <div>REMOVE FIRST THREAD ON ALL TAPPED HOLES</div> <div>BREAK ALL SHARP CORNERS .010 TO .020</div> <div>STAMP OR MARK DRAWING NO.</div> | <div>HAYES</div> <div>MANUFACTURING INC. ®</div> <div>TITLE</div> <div>L-SERIES COUPLING/HOUSING ASS'Y</div> <div>MATERIAL</div> | <div>DRAWN BY</div> <div>SIETING</div> <div>CHECKED BY</div> <div>RJH</div> <div>DATE</div> <div>10-01-07</div> <div>SCALE</div> <div>DRAWING NO.</div> <div>G18-148-L100-02</div> <div>SHEET OF REV.</div> |