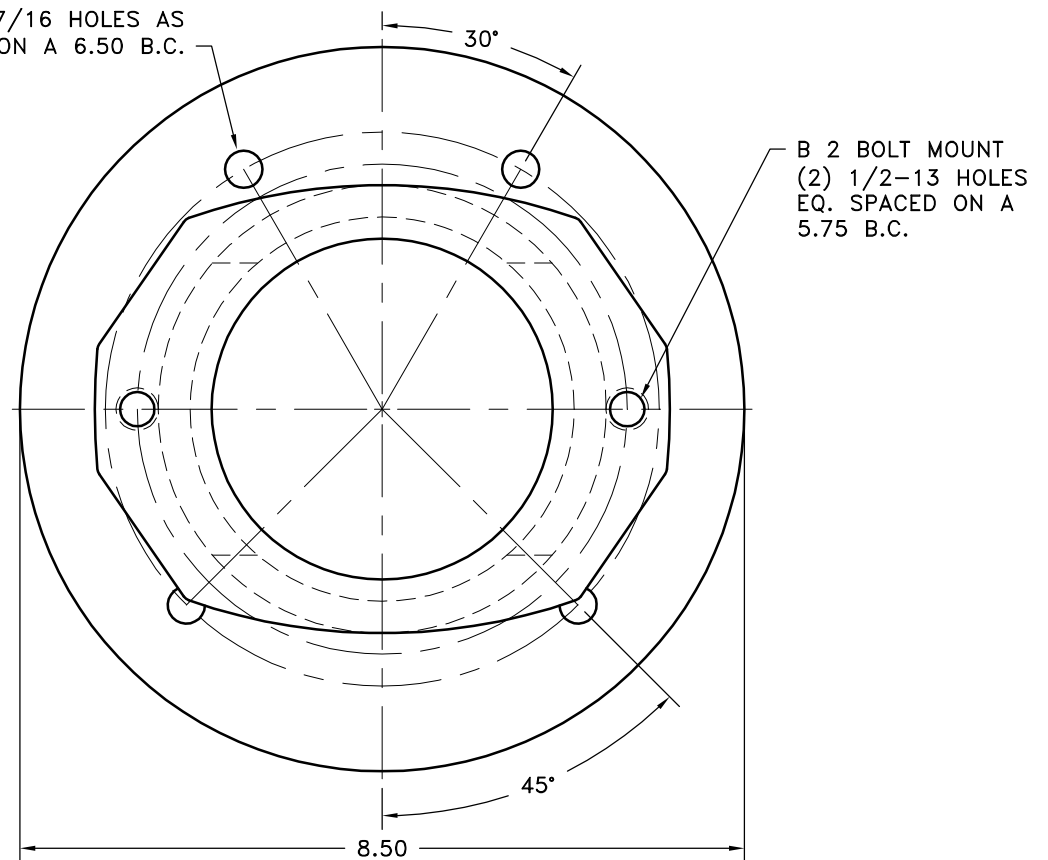
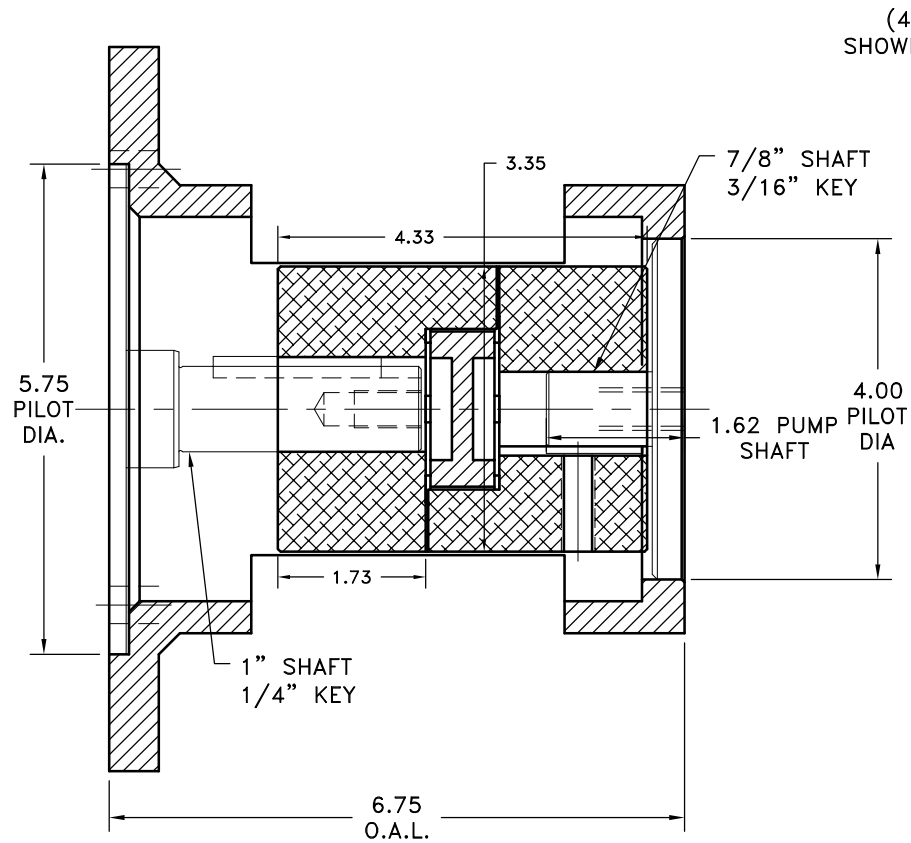


REV	DATE	CHANGE DESCRIPTION	MOD.BY	CK1	CK2



THIS DRAWING IS THE PROPERTY OF HAYES MFG. INC. AND IS LOANED SUBJECT TO THE CONDITION THAT IT SHALL NOT BE REPRODUCED, COPIED, LOANED OR OTHERWISE DISPOSED OF, DIRECTLY OR INDIRECTLY. IT SHALL BE USED AS A MEANS OF REFERENCE TO WORK FURNISHED BY THIS COMPANY ONLY AND IS NOT TO BE SUBMITTED TO OUTSIDE PARTIES FOR EXAMINATION WITHOUT OUR CONSENT.

NOTES:
IF NEEDED, ACCESS COVERS #AC18
(2 REQUIRED)
APPROX. WEIGHT: 7 LB. 8 OZ.

4	G18-155-6.75	SMALL ENGINE HOUSING	1
3	L110N	L-SERIES INSERT	1
2	L110x1x1/4	L-SERIES COUPLING HUB	1
1	L110x7/8x3/16	L-SERIES COUPLING HUB	1

SYMBOLS	DET.	PART NUMBER	DESCRIPTION	QTY.
□ FLATNESS — STRAIGHTNESS ∟ ANGULARITY ⊥ SQUARENESS ∥ PARALLELISM ⊙ CONCENTRICITY ⊕ TRUE POSITION ○ ROUNDNESS ⊖ CIRCULAR RUN OUT ⊗ TOTAL RUN OUT ∅ CYLINDRICITY ✓ FINISH	DO NOT SCALE DRAWING TOLERANCES UNLESS OTHERWISE SPECIFIED 125 MAXIMUM ANGLE ±1/2° FRACTION ±1/32 DECIMAL .00 ±.01 .000 ±.005 .0000 ±.0005	REMOVE FIRST THREAD ON ALL TAPPED HOLES BREAK ALL SHARP CORNERS .010 TO .020 STAMP OR MARK DRAWING NO.	HAYES MANUFACTURING INC. ® TITLE L-SERIES COUPLING/HOUSING ASS'Y MATERIAL	DRAWN BY SIETING CHECKED BY RJH DATE 04-25-08 SCALE DRAWING NO. G18-155-L110-03 SHEET OF REV.