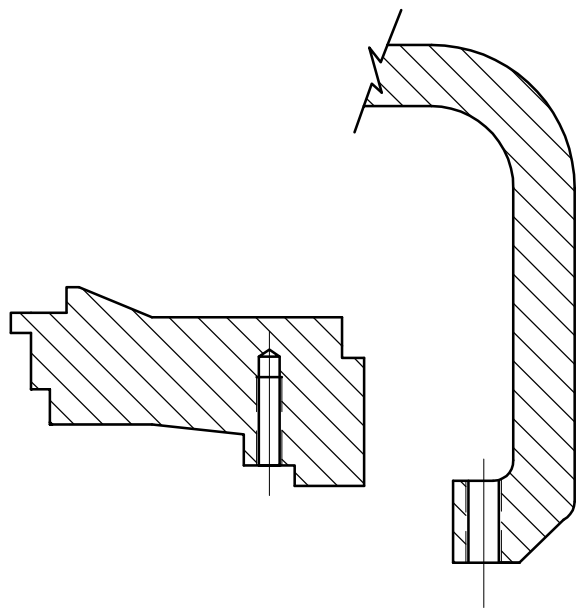
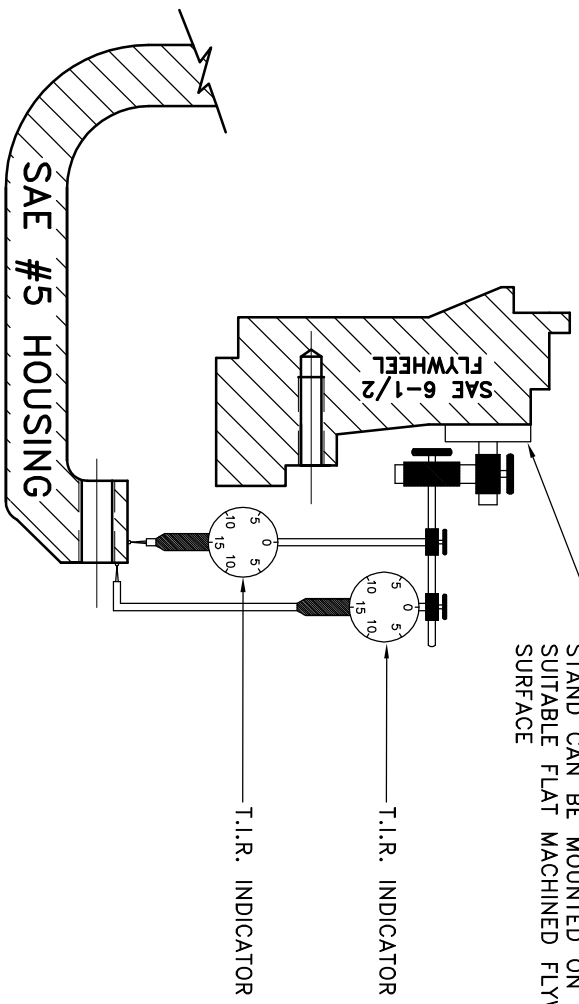


ENGINE HOUSING T.I.R. TEST SETUP



STANDARD MAGNETIC BASE INDICATOR STAND CAN BE MOUNTED ON ANY SUITABLE FLAT MACHINED FLYWHEEL SURFACE



NOTE:
 WHEN USING A NON ADJUSTABLE MAGNETIC BASE INDICATOR STAND YOU WILL WANT TO REMOVE THE PUMP MOUNT PLATE AND COUPLING TO MOUNT THE MAGNETIC BASE INDICATOR ON THE FACE OF THE FLYWHEEL.

1. REMOVE PUMP MOUNT PLATE
2. REMOVE COUPLING
3. PLACE MAGNETIC INDICATOR ON FLAT PORTION OF FLYWHEEL.
4. SET UP INDICATORS AS SHOWN (ONE INDICATOR TEST AT A TIME IS PREFERRED).

SYMBOLS FINISHNESS ANGULARITY SQUARENESS PARALLELISM PERPENDICULARITY TOTAL RUN OUT CIRCULAR RUN OUT FINISH	DEF. PART NUMBER DO NOT SCALE DRAWING TOLERANCES UNLESS OTHERWISE SPECIFIED ANGLE 1/2 FRACTION 1/32 .00 ±.005 .000 ±.0005 - UNLESS OTHERWISE SPECIFIED - REMOVE FIRST THREAD BREAK ALL SHARP CORNERS .010 TO .020 STAMP OR MARK DRAWING NO.	TITLE T.I.R. INDICATOR SETUP	DRAWN BY LAWSON	DATE 8-24-00	DRAWING NO. INDICATOR 2
			CHECKED BY SCALE	MAGNETIC BASE INDICATOR	



THIS DRAWING IS THE PROPERTY OF HAYES MFG. INC. AND IS LOANED SUBJECT TO THE CONDITION THAT IT SHALL NOT BE REPRODUCED, COPIED, EITHER WHOLLY OR IN PART, OR TRANSMITTED IN ANY MANNER, IT SHALL BE USED AS A MEANS OF REFERENCE TO WORK FURNISHED BY THIS COMPANY ONLY AND IS NOT TO BE SUBMITTED TO OUTSIDE PARTIES FOR EXAMINATION WITHOUT OUR CONSENT.